

SmartLED™ MRI Lighting System

4" Open Appearance Adjustable

Up to 60,000 Hour Life • Type IC

LM-80 Qualified • LM-79 Certified Photometry

Specifications

Delivered System Performance

- Lumens: **-2500L** (35W); 2500 nominal lumens
- Distribution: NFL standard; optional: -SPT, or -MFL
- Color temperature: 3500°K standard; optional: -27K, -30K, -41K, or -50K
- CRI: 80+ standard; optional: -HC (90+)
- 60,000 hour life (L70)
- Fully sustainable: removable for servicing

Thermal Management System

- Aluminum heat sink and components for cool operation, long life, and low maintenance

Center Beam Optics

- Tilts up to 35°
- Rotates full 365° and locks in place
- Accommodates sloped ceilings up to 35°

SmartLED™ MRI Lighting System Required

- Kirlin remote driver modules, cabinet, and RFI filters required for operation
- Components ordered separately, see below for driver information and **MRI-CABNT** for additional components
- The **MRI Configurator** can help determine the necessary components

- SmartLED driver modules provide 0-10V dimming to 0.38%

SmartLED™ Emergency Backup System

- **EMI-21220** or **EMI-03120** available for emergency power
- See specification sheet; order separately

Trim and Lens Assembly

- Clear specular aluminum self-flanged, low glare cone with lens above
- Optional colors and finishes available

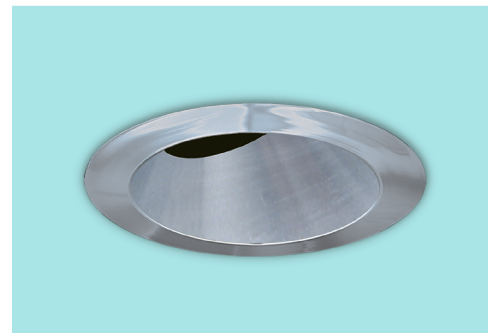
Acrylic Enameled Aluminum Housing

- Rustproof and corrosion resistant: exceeds 1000 hour ASTM 5% salt spray test; all components fully sustainable
- Shallow depth for restricted plenums
- Cool operation extends component life
- Modular design; visible and fully serviceable through aperture
- Built-in plaster flange

Outlet Box (Aluminum)

- UL listed J-box; prewired with ½" knockouts

MRR-04416



Installation & Hardware

- Requires minimum 18 AWG twisted pair shielded wire from SmartLED™ MRI Lighting System to fixtures
- Recesses in ceilings up to 1-1/8" thick Aluminum 27" hanger bars with adjustable mounting brackets (2) supplied.

UL, C-UL (Canada) Listings

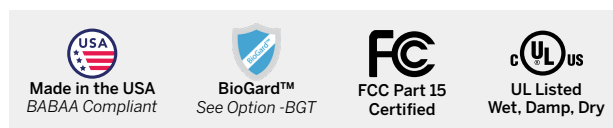
- Wet, damp or dry locations, covered ceilings
- Type IC: for direct contact with insulation

IEC & FCC Compliance

- FCC Part 15 certified for EMI/RFI emissions

FIVE YEAR Limited Warranty

- Complete fixture, must be installed with all SmartLED™ components

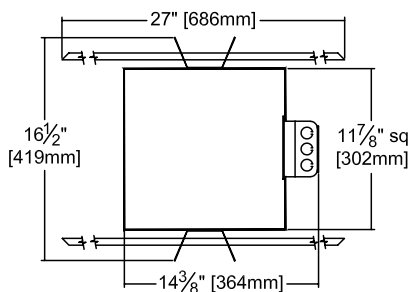
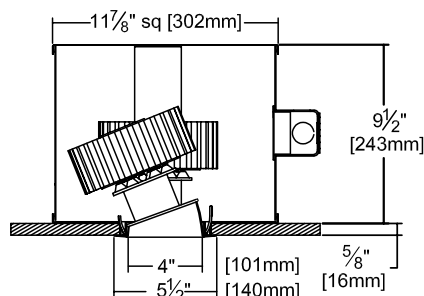


Options and Ordering Configuration

(Example: MRR-04416-2500L-30K-MFL)

Must Specify		Optional			
Model	Lumens	CCT & CRI	Beam	Trim & Lens Options	Other Options
MRR-04416					
	-2500L	(Blank): 35K, 80+ CRI	(Blank): NFL	(Blank): Clear specular aluminum self-flanged cone with lens above	(Blank): None
		80+ CRI	-SPT	Trim Finishes	Other Options
		-27K: 2700°K	-NFL	-30T: All white acrylic enameled cone	-99: Special modification; consult factory
		-30K: 3000°K	-MFL	-30F: White acrylic enameled cone flange	
		-35K: 3500°K		-70T: SofTex™ semi-specular clear self-flanged cone	
		-41K: 4000°K		-BGT: BioGard anti-microbial white	
		-50K: 5000°K		-KBG: BioGard anti-microbial black	
		90+ CRI		-94: Custom color; consult factory	
		-27K-HC: 2700°K		-94BG: BioGard anti-microbial custom color finish	
		-30K-HC: 3000°K		Other Trim Features	
		-35K-HC: 3500°K		-32: White trim extender, specify OD	
		-41K-HC: 4000°K		-45: Gasket between trim flange and ceiling	
		-50K-HC: 5000°K			

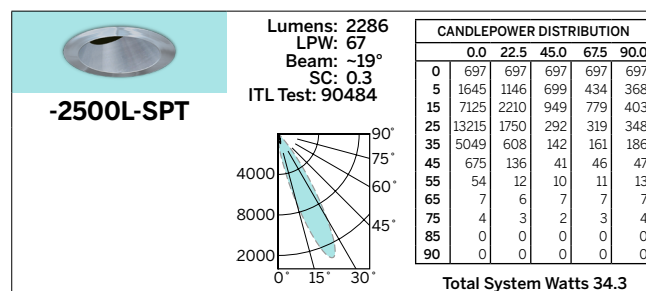
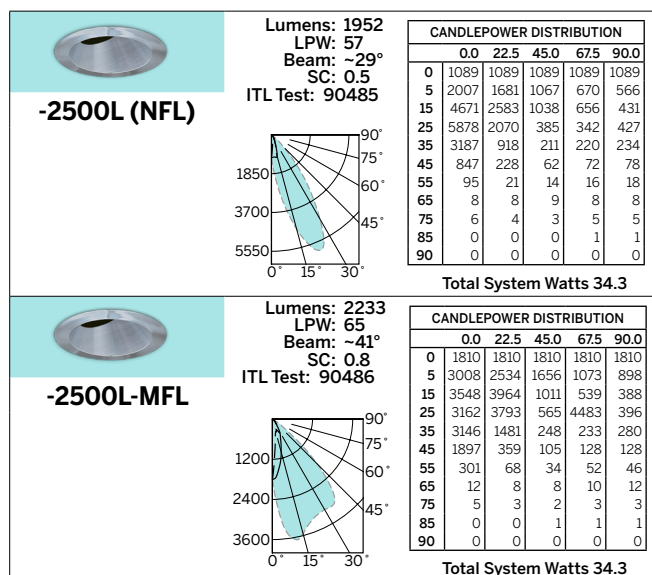
LIMITED WARRANTY. CATALOGUE KILN/FIRE HITS ARE WARRANTED FREE OF DEFECTS IN WORKMANSHIP OR MATERIAL FOR FIVE YEARS FROM DATE OF PURCHASE. IN NORMAL USE, MANUFACTURER AT HIS OPTION WILL REPLACE OR REPAIR SUCH FURNITURE OR RELATED ACCESSORIES. THE PURCHASE PRICE OR REPRESENTATION OF PROOF OF PURCHASE AND DEFECTIVE FURNITURE AT THE OFFICES OF ORIGINAL MANUFACTURER WILL BE A BASIS OF ORIGINAL COMPLAINT. LIABILITY OF MANUFACTURER SHALL NOT BE ABLE TO AT ANY OTHER DAMAGES, SUSTAINED OR SUFFERED BY PURCHASER OR ANY PERSON. THIS WARRANTY IS LIMITED TO THE REPLACEMENT OF THE DEFECTIVE PARTS. SELLER DOES NOT WARRANT AS TO MERCHANTABILITY OR FITNESS FOR A PARTICULAR USE, NOR WILL ANY ORAL STATEMENT CONSTITUTE A WARRANTY OR AMEND THIS SPECIFIC WARRANTY. ABNORMAL USE, ABUSE OF THE FURNITURE, IMPROPER INSTALLATION, OR REPAIR, OR MODIFICATION OF THE FURNITURE WITHOUT PROPER INSTRUCTIONS BY THE MANUFACTURER, OR THE USER, SHALL VOID THE WARRANTY. SELLER SHALL NOT BE RESPONSIBLE FOR THE REPAIR OR REPLACEMENT OF THE FURNITURE WITHOUT PROPER INSTRUCTIONS BY THE MANUFACTURER, OR THE USER, SHALL VOID THE WARRANTY. SELLER SHALL NOT BE RESPONSIBLE FOR THE REPAIR OR REPLACEMENT OF THE FURNITURE WITHOUT PROPER INSTRUCTIONS BY THE MANUFACTURER, OR THE USER, SHALL VOID THE WARRANTY.



5" Dia.

Photometry from I.T.L., Boulder, CO

LM-79 IESNA Certified Photometry from Independent Lab



*LED manufacturers maintain a tolerance of +/-7% on flux (lumens) and power (electrical) measurements.

Fully Digital Controlled Power Source for LED Luminaires

Mounted in Kirlin's **MRI-CABNT**

Drivers wired in series



Driver Module	Maximum Capacity	Fixture Load Example
DVR-1400A	Qty 1: 2500L Luminaire	<ul style="list-style-type: none"> Qty 1: MRR-04416-2500L
DVR-1400B	Up to Qty 2: 2500L Luminaire	<ul style="list-style-type: none"> Qty 2: MRR-04416-2500L Qty 1: MRR-04414-2500L and Qty 1: MRR-04416-2500L