

CATALOG #	TYPE	
JOB NAME	WATTAGE	VOLTAGE

SmartLED™ MRI Lighting System

4" Lensed Wall Wash

Up to 90,000 Hour Life • Type IC

LM-80 Qualified • LM-79 Certified Photometry

Specifications

Delivered System Performance

- Lumens: **-1500L** (20W); 1500 nominal lumens
- Color temperature: 3500°K standard; optional: -27K, -30K, -41K, or -50K
- CRI: 80+ standard; optional: -HC (90+)
- 90,000 hour life (L70**)
- Fully sustainable: removable for servicing
- Center beam optics positioned at 25°

Thermal Management System

- Aluminum heat sink and components for cool operation, long life, and low maintenance

SmartLED™ MRI Lighting System Required

- Kirlin remote driver modules, cabinet, and RFI filters required for operation
- Components ordered separately, see below for driver information and **MRI-CABNT** for additional components
- The **MRI Configurator** can help determine the necessary components
- SmartLED driver modules provide 0-10V dimming to 0.38%

SmartLED™ Emergency Backup System

- **EMI-21220** or **EMI-03120** available for emergency power
- See specification sheet; order separately

Trim and Lens Assembly

- Clear specular aluminum self-flanged, low glare cone with lens above
- Optional colors and finishes available

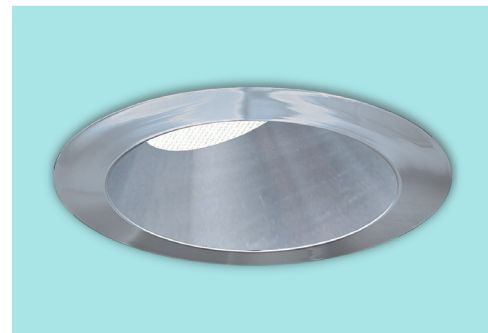
Acrylic Enameled Aluminum Housing

- Rustproof and corrosion resistant: exceeds 1000 hour ASTM 5% salt spray test; all components fully sustainable
- Shallow depth for restricted plenums
- Cool operation extends component life
- Modular design; visible and fully serviceable through aperture
- Built-in plaster flange

Outlet Box (Aluminum)

- UL listed J-box; prewired with ½" knockouts

MRR-04225



Installation & Hardware

- Requires minimum 18 AWG twisted pair shielded wire from SmartLED™ MRI Lighting System to fixtures
- Recesses in ceilings up to 1-1/8" thick
- Aluminum 27" hanger bars with adjustable mounting brackets (2) supplied.

UL, C-UL (Canada) Listings

- Wet, damp or dry locations, covered ceilings
- Type IC: for direct contact with insulation

IEC & FCC Compliance

- FCC Part 15 certified for EMI/RFI emissions

FIVE YEAR Limited Warranty

- Complete fixture, must be installed with all SmartLED™ components



Options and Ordering Configuration

(Example: MRR-04225-1500L-30K-BGT)

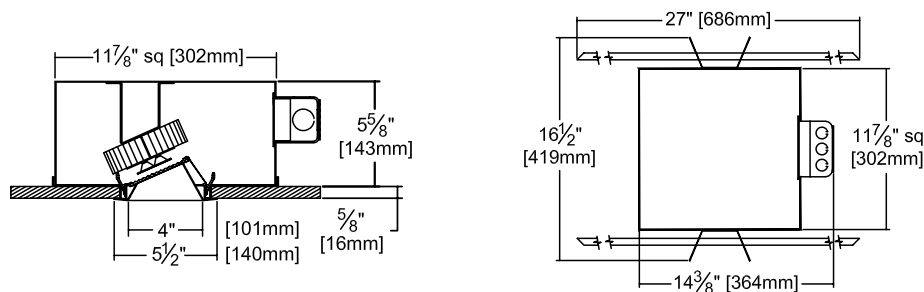
Must Specify		Optional		
Model	Lumens	CCT & CRI	Trim & Lens Options	Other Options
MRR-04225				
	-1500L	(Blank): 35K, 80+ CRI	(Blank): Clear specular aluminum self-flanged cone with lens above	(Blank): None
		80+ CRI	Trim Finishes	Other Options
		-27K: 2700°K	-30T: All white acrylic enameled cone	-99: Special modification; consult factory
		-30K: 3000°K	-30F: White acrylic enameled cone flange	
		-35K: 3500°K	-70T: SofTex™ semi-specular clear self-flanged cone	
		-41K: 4000°K	-BGT: BioGard anti-microbial white	
		-50K: 5000°K	-BKBG: BioGard anti-microbial black	
		90+ CRI	-94: Custom color; consult factory	
		-27K-HC: 2700°K	-94BG: BioGard anti-microbial custom color finish	
		-30K-HC: 3000°K	Other Trim Features	
		-35K-HC: 3500°K	-32: White trim extender, specify OD	
		-41K-HC: 4000°K	-45: Gasket between trim flange and ceiling	
		-50K-HC: 5000°K	Lens Options	
			-LL: Tempered glass lens converts beam to oval	

*See note next page

Projected L70** for Kirlin Luminaires	
In Open Plenum	90,000 hours
In Insulation (Type IC)	60,000 hours

**Hours at 70% lumen maintenance

Dimensions

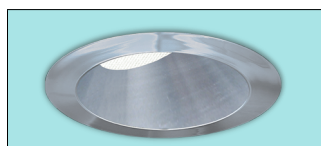


Ceiling Cut-out
5" Dia.

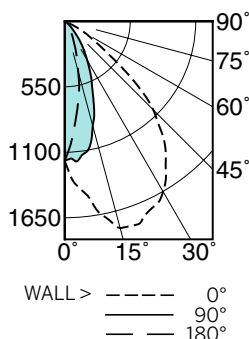
Photometry - Installed Complete Fixture

Photometry from I.T.L., Boulder, CO

LM-79 IES Certified Photometry from Independent Lab



-1500L



Lumens: 1375
LPW: 66
ITL Test: 87229

DISTANCE FROM CEILING IN FEET	SINGLE FIXTURE					MULTIPLE FIXTURES					
	1'	2'	3'	4'		2' CENTERS			3' CENTERS		
	FIXTURE INSTALLED 2' FROM WALL					Footcandle Distribution on Wall Surface					
1	18.0	3.9	0.8	0.6	0.4	21.9	22.0	22.0	20.2	4.0	20.1
2	93.6	45.9	8.2	1.4	0.5	112.0	112.0	112.0	95.7	43.3	95.7
3	66.3	45.8	16.5	4.3	1.1	102.0	102.0	102.0	75.9	60.3	75.9
4	39.2	31.0	15.7	6.1	2.1	76.3	76.4	76.4	52.4	49.3	52.4
5	23.3	19.7	12.1	6.1	2.7	54.7	54.7	54.7	36.6	36.3	36.6
6	14.9	13.2	9.0	5.3	2.8	40.8	40.8	40.8	27.5	27.1	27.5
7	10.0	9.2	6.8	4.5	2.7	31.8	31.9	31.9	21.1	21.1	21.1
8	7.1	6.7	5.3	3.8	2.5	26.0	26.1	26.0	17.1	17.2	17.1
9	5.5	5.3	4.5	3.4	2.3	22.7	22.8	22.8	14.7	15.1	14.7

Total System Watts 20.8

*LED manufacturers maintain a tolerance of +/-7% on flux (lumens) and power (electrical) measurements.

SmartLED™ MRI Driver Modules

Fully Digital Controlled Power Source for LED Luminaires

Mounted in Kirlin's **MRI-CABNT**

Drivers wired in series



Driver Module	Maximum Capacity	Fixture Load Examples
DVR-1400A	Up to Qty 2: 1500L Luminaires	<ul style="list-style-type: none"> Qty 1: MRR-04225-1500L Qty 2: MRR-04225-1500L Qty 1: MRR-04200-1500L and Qty 1: MRR-04225-1500L

LIMITED WARRANTY: KIRLIN LIGHTING FIXTURES ARE WARRANTED FREE OF DEFECTS IN WORKMANSHIP OR MATERIAL FOR TWO YEARS FROM DATE OF PURCHASE. INSTALLATION MUST BE IN ACCORDANCE WITH THE KIRLIN LIGHTING INSTALLATION MANUAL. THE WARRANTY DOES NOT COVER DAMAGE TO THE FIXTURE CAUSED BY IMPROPER INSTALLATION, ABUSE, OR MODIFICATION OF THE FIXTURE WITHOUT PRIOR WRITTEN AUTHORIZATION FROM THE MANUFACTURER. THE WARRANTY IS VOID IF THE FIXTURE IS USED IN A MANNER NOT INTENDED BY THE MANUFACTURER. THE WARRANTY IS VOID IF THE FIXTURE IS USED IN A MANNER NOT INTENDED BY THE MANUFACTURER. THE WARRANTY IS VOID IF THE FIXTURE IS USED IN A MANNER NOT INTENDED BY THE MANUFACTURER.