

| | | |
|-----------|---------|---------|
| CATALOG # | TYPE | |
| JOB NAME | WATTAGE | VOLTAGE |

SmartLED™ MRI Lighting System

4" Open Appearance Adjustable

Up to 90,000 Hour Life • Type IC

LM-80 Qualified • LM-79 Certified Photometry

Specifications

Delivered System Performance

- Lumens: **-1500L** (20W); 1500 nominal lumens
- Distribution: NFL standard; optional: -SPT, or -MFL
- Color temperature: 3500°K standard; optional: -27K, -30K, -41K, or -50K
- CRI: 80+ standard; optional: -HC (90+)
- 90,000 hour life (L70**)
- Fully sustainable: removable for servicing

Thermal Management System

- Aluminum heat sink and components for cool operation, long life, and low maintenance

Center Beam Optics

- Tilts up to 45°
- Rotates full 365° and locks in place
- Accommodates sloped ceilings up to 45°

SmartLED™ MRI Lighting System Required

- Kirlin remote driver modules, cabinet, and RFI filters required for operation
- Components ordered separately, see below for driver information and [MRI-CABNT](#) for additional components
- The [MRI-Configurator](#) can help determine the necessary components

- SmartLED driver modules provide 0-10V dimming to 0.38%

SmartLED™ Emergency Backup System

- **EMI-21220** or **EMI-03120** available for emergency power
- See specification sheet; order separately

Trim and Lens Assembly

- Clear specular aluminum self-flanged, low glare cone with lens above
- Optional colors and finishes available

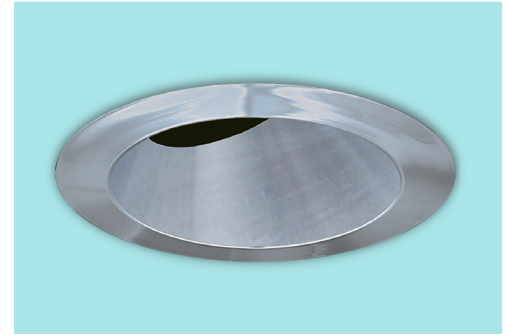
Acrylic Enameled Aluminum Housing

- Rustproof and corrosion resistant: exceeds 1000 hour ASTM 5% salt spray test; all components fully sustainable
- Shallow depth for restricted plenums
- Cool operation extends component life
- Modular design; visible and fully serviceable through aperture
- Built-in plaster flange

Outlet Box (Aluminum)

- UL listed J-box; prewired with 1/2" knockouts

MRR-04220



Installation & Hardware

- Requires minimum 18 AWG twisted pair shielded wire from SmartLED™ MRI Lighting System to fixtures
- Recesses in ceilings up to 1-1/8" thick
- Aluminum 27" hanger bars with adjustable mounting brackets (2) supplied.

UL, C-UL (Canada) Listings

- Wet, damp or dry locations, covered ceilings
- Type IC: for direct contact with insulation

IEC & FCC Compliance

- FCC Part 15 certified for EMI/RFI emissions

FIVE YEAR Limited Warranty

- Complete fixture, must be installed with all SmartLED™ components



Options and Ordering Configuration

(Example: MRR-04220-1500L-30K-MFL)

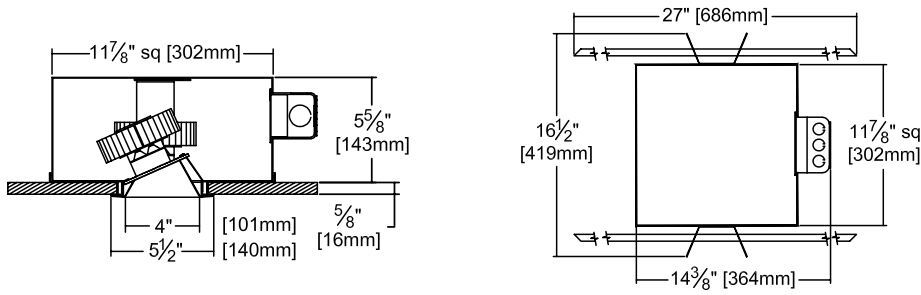
| Must Specify | | Optional | | | |
|--------------|--------|-----------------------|--------------|----------------------------------------------------------------------------------|--------------------------------------------|
| Model | Lumens | CCT & CRI | Beam | Trim & Lens Options | Other Options |
| MRR-04220 | -1500L | (Blank): 35K, 80+ CRI | (Blank): NFL | (Blank): Clear specular aluminum self-flanged cone with lens above | (Blank): None |
| | | 80+ CRI | -SPT | Trim Finishes | Other Options |
| | | -27K: 2700°K | -NFL | -30T: All white acrylic enameled cone | -99: Special modification; consult factory |
| | | -30K: 3000°K | -MFL | -30F: White acrylic enameled cone flange | |
| | | -35K: 3500°K | | -70T: SofTex™ semi-specular clear self-flanged cone | |
| | | -41K: 4000°K | | -BGT: BioGard anti-microbial white | |
| | | -50K: 5000°K | | -BKBG: BioGard anti-microbial black | |
| | | 90+ CRI | | -94: Custom color; consult factory | |
| | | -27K-HC: 2700°K | | -94BG: BioGard anti-microbial custom color finish | |
| | | -30K-HC: 3000°K | | Other Trim Features | |
| | | -35K-HC: 3500°K | | -32: White trim extender, specify OD | |
| | | -41K-HC: 4000°K | | -45: Gasket between trim flange and ceiling | |
| | | -50K-HC: 5000°K | | Lens Options | |
| | | | | -WA: White acrylic (flat) diffuser instead; will produce wide flood distribution | |

*See note next page

| Projected L70** for Kirlin Luminaires | |
|---------------------------------------|--------------|
| In Open Plenum | 90,000 hours |
| In Insulation (Type IC) | 60,000 hours |

**Hours at 70% lumen maintenance

Dimensions



Ceiling Cut-out
5" Dia.

Photometry - Installed Complete Fixture

Photometry from I.T.L., Boulder, CO

LM-79 IESNA Certified Photometry from Independent Lab

