

CATALOG #	TYPE	
JOB NAME	WATTAGE	VOLTAGE

# Lighting for Patient Spaces

0-10V Wall Control with Lutron Dimmers for Tunable White LED Luminaires

\*Wallplate Only: Available as MCP-04015

**MCD-04010**  
**MCP-04015\***

## Specifications - MCD-04010

- Fits into standard 2-gang box
- Two 0-10V slide controls included (Lutron NTXTV-DV slide dimmer); One for color, one for intensity
- Line voltage switching included
- Low profile architectural wall plate; white standard, optional colors available (see below)
- One year (Lutron dimmers) Limited Warranty



## Specifications - MCP-04015

- Fits onto standard 2-gang box
- Low profile architectural wall plate; white standard, optional colors available (see below)

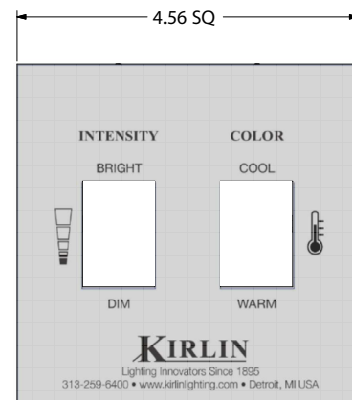
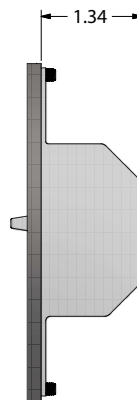
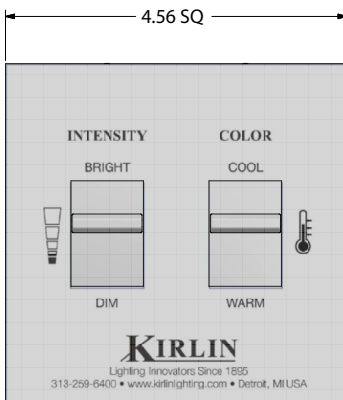


## Options and Ordering Configuration

(Example: MCP-04015-50)

Must Specify	Optional
Model	Wallplate Color
MCD-04010 MCP-04015	<p><b>(Blank):</b> Standard white wall plate</p> <p><b>-38:</b> Black wallplate</p> <p><b>-50:</b> Gray wallplate</p> <p><b>-51:</b> Ivory wallplate</p> <p><b>-94:</b> Custom color wallplate</p>

## Dimensions



MCD-04010 (with Slide Dimmers)

MCP-04015 (Wallplate Only)