

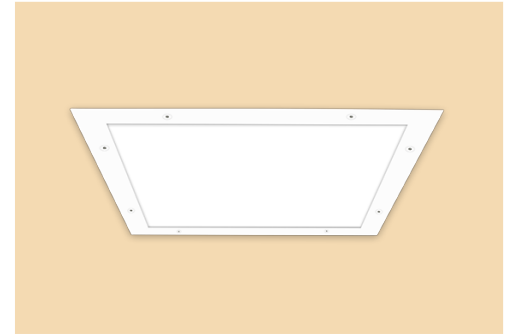
CATALOG #	TYPE	
JOB NAME	WATTAGE	VOLTAGE

Latitudes Series LED Lighting

2'x 2' Recessed White Panel for Harsh Environments

Ligature & Vandal Resistant • IK10 Impact Resistant • 90 CRI
Up to 60,000 Hour Rated Life (L70) • Wet Location (Covered Ceilings)

LRS-22VFP



Specifications

Delivered System Performance

- Lumen Series: **MUST SPECIFY**
-2500L
-1500L
- Color temperature: **MUST SPECIFY**
-35K: 3500K
-41K: 4000K
- Distribution: WFL
- 90 CRI; 60,000 hour rated life (L70)

Thermal Management

- Heavy gauge aluminum construction provides maximum heat dissipation for cool LED operation. Extends life of all components

LED Power Supply - INTERNAL or REMOTE

- 30°C (-22°F) to 60°C (140°F)
- 120-277V / 50-60Hz standard; load insensitive
- 0-10V CCR dimming standard (100-10%) or see Options
- Remote driver in mini cabinet available, see option -REM
- Enclosed in aluminum housing

IK10 Vandal Resistant Trim/Lens

- Single-piece, rigid tempered heavy gauge 6063-T5 aluminum frame with seam welded corners and keys
- Rustproof and corrosion resistant
- Flush center pin tamperproof screws
- Tamperproof tool included
- High strength clear flat polycarbonate (0.220") - environmental side
- Extruded acrylic wave guide provides unparalleled uniformity

Outlet Box

- UL listed J-box; prewired 16 GA steel with ½" knockouts

Installation

- Recessed mount for drywall ceilings (structural blocking required - by others)
- Shallow 2⅜" recessed depth to minimize plenum interference

UL, C-UL (Canada) Listings

- Wet, damp or dry locations, covered ceilings

FCC Compliance

- FCC Part 15 certified for EMI/RFI emissions

FIVE YEAR Limited Warranty

- Complete standard fixture

Made in the USA BABAA Compliant	Vandal Resistant	IK10 Impact Resistant	Natatorium See Option -NAT	BioGard™ See Option -BG	FCC Part 15 Certified	UL Listed Wet, Damp, Dry
------------------------------------	------------------	-----------------------	-------------------------------	----------------------------	-----------------------	-----------------------------

Options and Ordering Configuration

(Example: LRS-22VFP-1500L-35K)

Must Specify			Optional		
Model	Output	CCT	Power Supply	Trim Finish	Other Options
LRS-22VFP	-1500L -2500L	-35K: 3500K -41K: 4000K	(Blank): 0-10V 1.0% dimming -D6: Triac 100-10% dimming instead -REM: Driver remote mounted in mini-cabinet; see next page for driver ordering - MUST BE ORDERED SEPARATELY	(Blank): Standard white enamel -35T: Silver enamel trim -37T: Dark bronze enamel trim -38T: Black enamel trim -BG: BioGard™ anti-microbial white -BKBG: BioGard™ anti-microbial black -94: Custom color; consult factory -94BG: BioGard™ anti-microbial custom color finish	(Blank): None -99: Special modification; consult factory -NAT: Modified for natatorium use

Remote Mini-Cabinet Options and Ordering Configuration

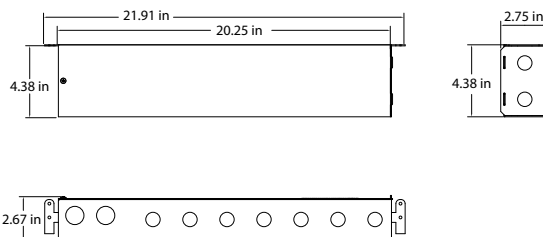
(Example: REM-SWCAB-1400B-2-D2-EMI)

Must Specify				Optional
Model	Driver Current	Driver Count	Dimming	Other Options
REM-SWCAB				
	50 Watt Drivers -1400A: 1400mA 50W driver; powers up to (2) 1500L fixtures or (1) 2500L fixture 75 Watt Drivers -1400B: 1400mA 75W driver; powers up to (3) 1500L fixtures or up to (2) 2500L fixtures 100 Watt Drivers -1400C: 1400mA 100W driver; powers up to (4) 1500L fixtures	-1: 1 driver -2: 2 drivers; N/A on -1400C and -2500L -1400B driver options	-D1: 0-10V 1.0% dim -D6: Triac 100-10% dimming instead	(Blank): None -E15: Remote emergency micro-inverter: 50W max load; 90+ minutes run time -EMI: Remote emergency mini-inverter: 125W max load; 90+ minutes run time

Lumens	Remote Mini-Cabinet	Driver Wattage	Maximum Capacity	
			1 Driver in -REM Cabinet	2 Drivers in -REM Cabinet
-1500L	REM-SWCAB-1400A	50W	Qty 2: 1500L Luminaires, wired in series	Qty 4: 1500L Luminaires, (2 per driver, wired in series)
	REM-SWCAB-1400B	75W	Qty 3: 1500L Luminaires, wired in series	Qty 6: 1500L Luminaires, (3 per driver, wired in series)
	REM-SWCAB-1400C*	100W	Qty 4: 1500L Luminaires, wired in series	N/A
-2500L	REM-SWCAB-1400A	50W	Qty 1: 2500L Luminaire	Qty 2: 2500L Luminaires, (1 per driver)
	REM-SWCAB-1400B	75W	Qty 2: 2500L Luminaires, wired in series	N/A

* 100W XXXXC remote drivers have 2 LED outputs each

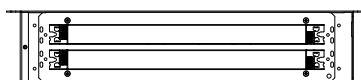
Dimensions



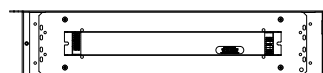
-REM Features

- Drivers can be mounted up to 250' away from fixtures
- Remote mini-cabinets are plenum rated and can be mounted to the ceiling grid
- Low-voltage cabling from driver to fixture(s)
- 1/2" and 3/4" knockouts

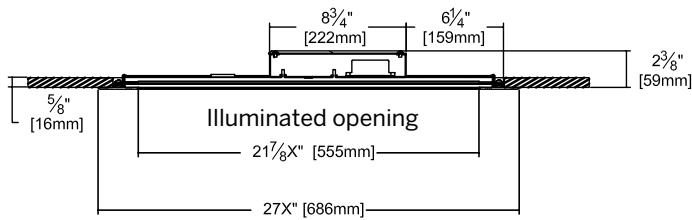
50W and 75W Drivers Exact dimensions of drivers inside the box may vary based on options chosen.



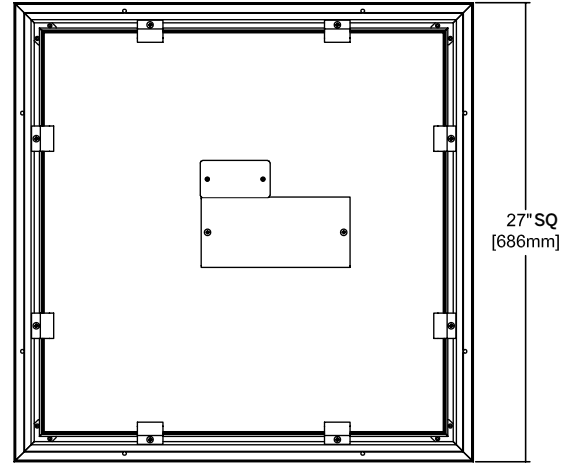
100W Drivers



Dimensions

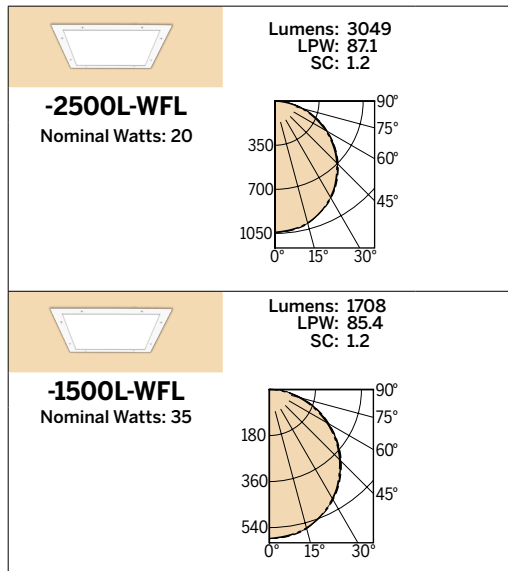


Ceiling Cut-out
25 1/8" SQ.



Photometry - Installed Complete Fixture

LM-79 IES Certified Photometry from Independent Lab



LED manufacturers maintain a tolerance of +/-7% on flux (lumens) and power (electrical) measurements.