

CATALOG #	TYPE	
JOB NAME	WATTAGE	VOLTAGE

## Latitudes Series

### Lensed 7" Wall Wash • LED

Up to 60,000 Hour Rated Life • Wet Listed

LM-79 Certified • LM-80 Qualified

## LRR-07430



## Specifications

### Delivered System Performance

- Nominal Lumens: **Must Specify**

#### Non-IC

-6500L

-5000L

-3500L

-2500L

- Select trim & beam distribution: see chart
- Select color (CCT): see chart; 80+ CRI standard; Option -HC for 90+ (15% lumen loss)
- 60,000 Hour Rated Life (L70)
- Center beam optics positioned at 20°

### Thermal Protection: SPECIFY VOLTAGE

- Thermal protector for insulation detection per UL/NEC. Must specify input voltage

### Thermal Management System

- Aluminum heat sink and components for cool operation, long life, and low maintenance

### LED Driver - INTERNAL

- Indoor/Outdoor: -30°C to 60°C (-22°F to 140°F)
- 0-10V CCR 10% dimming standard
- 120-277V / 50-60 Hz standard; load insensitive

### Trim Assembly

- Clear specular aluminum trim
- Self-flanged, low glare cone with lens above
- Optional colors and finishes available

### Acrylic Enameled Aluminum Housing

- Rustproof and corrosion resistant: exceeds 1000 hour ASTM 5% salt spray test
- Shallow depth fits restricted plenums
- Cool operation extends component life
- Modular design; visible and fully serviceable through aperture
- Built-in plaster flange

### Outlet Box (Galvanized)

- UL Listed, 14GA, insulated, removable cover
- ½" and ¾" knockouts

### Installation & Hardware

- Indoor/outdoor in ceilings up to 1½" thick
- Compatible with fire rated enclosures (by others)
- 27" hanger bars & adjusting brackets (2) supplied

### UL, C-UL (Canada)

- UL Listed: wet, damp or dry locations, covered ceilings
- Through-branch conductors (4 #12 AWG 90°C)

### IEC & FCC Compliance

- Meets IEC/EN 60601-1-2 electromagnetic compatibility standard for medical electrical equipment
- FCC Part 15 certified for EMI/RFI emissions

### FIVE YEAR Limited Warranty

- Complete standard fixture



## Options and Ordering Configuration

(Example: LRR-07430-5000L-120-30K-32-RH)

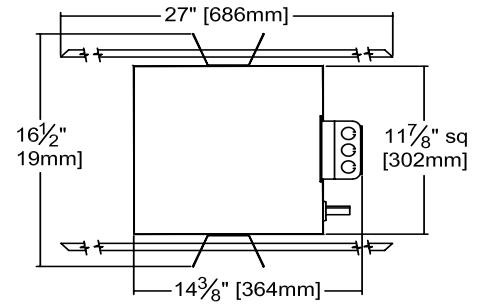
Must Specify				Optional			
Model	Lumens	Volts	CCT† & CRI	Driver Options	Emergency Options	Trim Options	Other Options
LRR-07430							
	-6500L -5000L -3500L -2500L	-120 -277 -97†: Other Voltage	(Blank): 3500K, 80+ CRI  <b>80+ CRI*</b> -27K: 2700°K -30K: 3000°K -35K: 3500°K -41K: 4000°K -50K: 5000°K <b>*Note:</b> Lumen Factor = 0.93 for -27K  <b>90+ CRI**</b> -27K-HC: 2700°K -30K-HC: 3000°K -35K-HC: 3500°K -41K-HC: 4000°K -50K-HC: 5000°K <b>**Note:</b> Lumen Factor = 0.79 for -27K-HC; All Others = 0.85; Consult Factory	(Blank): Standard 0-10V CCR 10% dim  -D1: 0-10V 1.0% dim -D2: 0-10V 0.1% dim -D3: DALI 1.0% dim -D4: DALI 100-0.1% dim -D5: DMX512A 0% dimming instead. Consult factory for use with -6500L -D40: -40°C (-40°F) driver; 0-10V 10% dimming instead for -3500L or -3500L only -ECO: Digital driver for Lutron EcoSystem controls. Dims to 1% or consult factory; -3500L max	(Blank): None  -EI: Remote emergency inverter for 40% of rated lumens for -6500L, 50% for -5000L and -3500L. Not available for -2500L. Run time: 90+ minutes. 120 or 277 V, 60 Hz input only. Specify voltage. Not for use with options -FS -EM: Internal emergency battery pack; Delivers 500 lumens; Run time: 90+ minutes. Not available with -6500L. -ERH: Remote emergency battery pack; Delivers 1000 lumens; CEC Compliant; Run time: 90+ minutes	(Blank): Standard clear aluminum trim; low glare cone with lens above  <b>Trim Finishes</b> -30F: White enamel (flange only) -30T: White enamel (complete trim) -35F: Silver enamel (flange only) -35T: Silver enamel (complete trim) -37F: Dark bronze enamel (flange only) -37T: Dark bronze enamel (complete trim) -38F: Black enamel (flange only) -38T: Black enamel (complete trim) -70T: Clear semi-specular SofTex™ (complete trim) -94: Custom color; consult factory <b>Other Trim Features</b> -32: White trim extender, specify OD -45: Gasket between trim & ceiling	(Blank): None  <b>Mounting</b> -RH: Joist mounting hardware instead  <b>Other Options</b> -99: Special modification; consult factory -AWN: Athena Wireless Node; N/A for Dimming Options -D5, -D40, -ECO -FS: Fused primary; One per fixture; N/A for option -EI -SH: Sealed housing and junction box  <b>*Note:</b> For other integrated control solutions, such as nLight, contact factory

## Dimensions

Technical drawing of a ceiling cut-out for a beam and wall. The drawing shows a cross-section of a ceiling with a cut-out for a beam. The dimensions are as follows:

- Top horizontal dimension:  $11\frac{7}{8}"$  sq [302mm]
- Right vertical dimension:  $5\frac{5}{8}"$  [143mm]
- Bottom left horizontal dimension:  $7\frac{1}{2}"$  [190mm]
- Bottom right horizontal dimension:  $8\frac{5}{8}"$  [219mm]
- Bottom right vertical dimension:  $5\frac{5}{8}"$  [16mm]

The cut-out is labeled "Ceiling Cut-out" and "8" Dia." (8 inches diameter). A yellow arrow labeled "BEAM" points downwards from the cut-out. A black arrow labeled "WALL" points to the right.



## Photometry - Installed Complete Fixture

**-6500L**

**Lumens: 5516**  
**LPW: 75**  
**ITL Test: 86451**

Nominal Lumens	Actual Lumens	Actual LPW
<b>6500L</b>	5516	75.3
<b>5000L</b>	4761	82.8
<b>3500L</b>	3828	89.0
<b>2500L</b>	2810	79.8

LED manufacturers maintain a tolerance of  $\pm 7\%$  on flux (lumens) and power (electrical) measurements.

▲ **Cone of Light Key**  
Dia. (in ft.) shown is where FC value is half the FC at nadir.

**Dist.** Distance (Ft.) from fixture  
**FC** Footcandles at nadir (0°)  
**Dia.** Circle of light at 50% of FC

LIMITED WARRANTY: CATALOGED KILN FIXTURES ARE WARRANTED FREE OF DEFECTS IN WORKMANSHIP OR MATERIAL FOR FIVE YEARS FROM DATE OF PURCHASE. INSTALLED TO N.E.C. IN NORMAL USE. Manufacturer at this option will replace or repair such fixture or refund the purchase price in place of a new fixture in the offices of manufacturer within the year of original shipment. Liability of manufacturer is limited to the foregoing, and manufacturer shall not be liable for any other damages, direct or indirect, sustained or suffered by purchaser or any person claiming through purchaser. This warranty is given on the condition that the purchaser will place all other warranties, expressed or implied, aside and not warrant as to merchantability or fitness for a particular use, nor will any other statement constitute a warranty or amend this specific warranty. Abnormal use, abuse of the fixture, improper installation, or repair, or modification of the fixture without written permission of the manufacturer, voids this warranty.

LATITUDE: 2022  
 NOVEMBER 2022