

CATALOG #	TYPE	
JOB NAME	WATTAGE	VOLTAGE

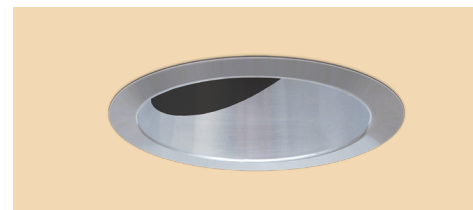
## Latitudes Series

### Open Appearance 6" Adjustable • LED

Up to 90,000 Hour Rated Life • Type IC • AirTight Optional

Wet Listed • LM-79 Certified • LM-80 Qualified

## LRR-06030



## Specifications

### Delivered System Performance

- Nominal Lumens: **Must Specify**

#### Type IC

-2000L

-1500L

-1000L

- Select trim & beam distribution: see chart
- Select color (CCT): see chart; 80+ CRI standard; Option -HC for 90+ (15% lumen loss)
- 90,000 Hour Rated Life (L70\*\*)

### Center Beam Optics

- Self-aligns with trim for optimal performance
- Hot aiming by hand
- Tilts from 0° to 45° and locks in place
- Rotates full 360° and locks in place
- Accommodates sloped ceilings up to 45°

### Thermal Management System

- Aluminum heat sink and components for cool operation, long life, and low maintenance

### LED Driver - INTERNAL

- Indoor/Outdoor: -30°C to 60°C (-22°F to 140°F)
- 0-10V CCR 10% dimming standard
- 120-277V / 50-60 Hz standard; load insensitive

### Pinhole Trim

- White die cast flat aluminum (field paintable)
- Low brightness black inner bevel and angle cut cone with clear tempered glass lens above

### Acrylic Enameled Aluminum Housing

- Rustproof and corrosion resistant: exceeds 1000 hour ASTM 5% salt spray test
- Shallow depth fits restricted plenums
- Cool operation extends component life
- Modular design; visible and fully serviceable through aperture
- Built-in plaster flange

### Outlet Box (Galvanized)

- UL Listed, 14GA, insulated, removable cover
- ½" and ¾" knockouts

### Installation & Hardware

- Indoor/outdoor in ceilings up to 1½" thick
- Compatible with fire rated enclosures (by others)
- 27" hanger bars & adjusting brackets (2) supplied

### UL, C-UL (Canada) Compliance

- Wet, damp or dry locations, covered ceilings
- Type IC for direct contact with insulation
- Through-branch conductors (4 #12 AWG 90°C) for Type IC Listing

### IEC & FCC Compliance

- Meets IEC/EN 60601-1-2 electromagnetic compatibility standard for medical electrical equipment
- FCC Part 15 certified for EMI/RFI emissions

### FIVE YEAR Limited Warranty

- Complete standard fixture



## Options and Ordering Configuration

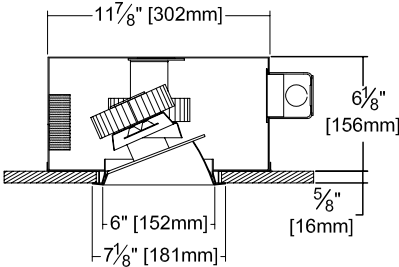
(Example: LRR-06030-1500L-120-NFL-35K-30T-RH-AT)

Must Specify					Optional			
Model	Lumens	Volts	Beam	CCT† & CRI	Driver Options	Emergency Options	Trim Options	Other Options
LRR-06030								
	-2000L -1500L -1000L	-120 -277 -97†: Other Voltage	(Blank): NFL  -SPT -NFL -MFL	(Blank): 3500°K, 80+ CRI  <b>80+ CRI*</b> -27K: 2700°K -30K: 3000°K -35K: 3500°K -41K: 4000°K -50K: 5000°K  *Note: Lumen Factor = 0.93 for -27K  <b>90+ CRI**</b> -27K-HC: 2700°K -30K-HC: 3000°K -35K-HC: 3500°K -41K-HC: 4000°K -50K-HC: 5000°K  **Note: Lumen Factor = 0.79 for -27K-HC; All Others = 0.85; consult factory	(Blank): Standard 0-10V CCR 10% dim  -D1†: 0-10V 1.0% dim -D2†: 0-10V 0.1% dim -D3†: DALI 1.0% dim -D4†: DALI 100-0.1% dim -D5†: DMX512A 0.1% dim -D40: -40°C (-40°F) driver; 0-10V 10% dim	(Blank): None  -EI: Remote emergency inverter for 100% rated lumens; Run time: 90+ minutes; N/A for options -FS, -97  -EM: Internal emergency battery pack; Delivers 500 lumens; Run time: 90+ minutes  -ERH: Remote emergency battery pack; Delivers 1000 lumens; CEC Compliant; Run time: 90+ minutes	(Blank): White die cast aluminum with black inner bevel  <b>Trim Finishes</b> -30F: White enamel flange (flange only) -30T: White enamel trim (complete trim) -35F: Silver enamel flange (flange only) -35T: Silver enamel trim (complete trim) -37F: Dark bronze enamel flange (flange only) -37T: Dark bronze enamel trim (complete trim) -38F: Black enamel flange (flange only) -38T: Black enamel trim (complete trim) -70T: Clear semi-specular SofTex™ trim -94: Custom color; consult factory  <b>Other Trim Features</b> -32: White trim extender, specify OD -45: Gasket between trim & ceiling -CF: Custom color filter (Rosco); Specify -DF: Electrically isolated trim -DL: Downlight cone instead. Clear specular finish standard or add optional trim selection	(Blank): None  <b>Mounting</b> -RH: Joist mounting hardware instead  <b>Other Options</b> -99: Special modification; consult factory -AWN: Athena Wireless Node; N/A for Dimming Options D5, -D40 -FS: Fused primary; One per fixture; N/A for option -EI  *Note: For other integrated control solutions, such as nLight, contact factory
<b>Projected L70** for Kirlin Luminaires</b>								
In Open Plenum		90,000 hours						
In Insulation (Type IC)		70,000 hours						
**Hours at 70% lumen maintenance		†Consult factory			†Consult factory for use with -2000L			

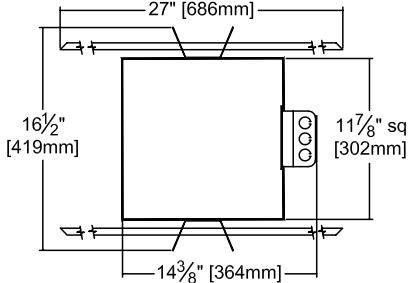
Performance Factors

NOMINAL LUMENS	LUMEN FACTOR	NOMINAL WATTS	LPW FACTOR
-2000L	1.257	28.7	0.92
-1500L	1.00	21.0	1.00
-1000L	.579	10.4	1.17

Dimensions



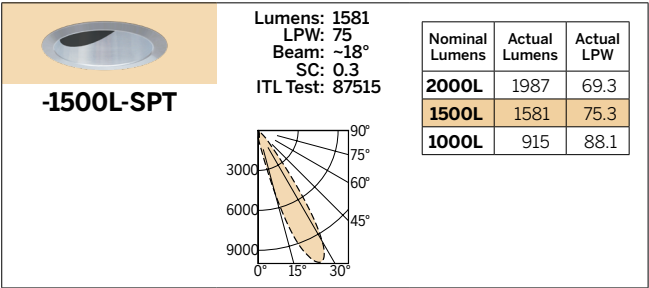
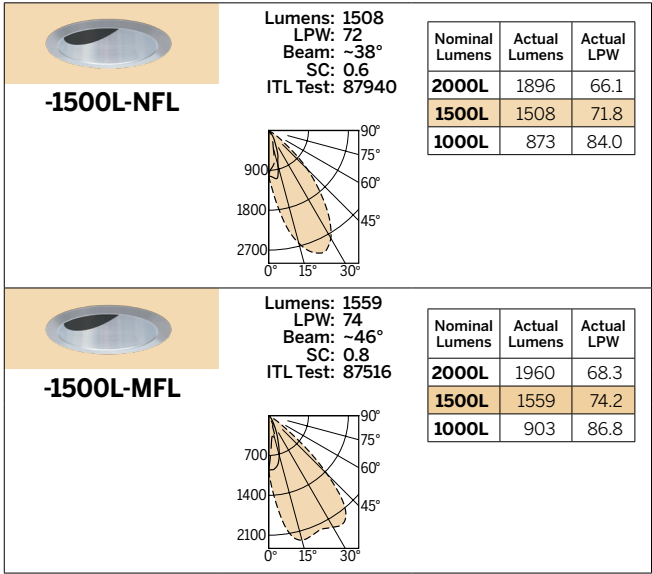
Ceiling Cut-out  
6 1/2" Dia.



\* See notes on page 1 for additional info on Lumen Factors

Photometry - Installed Complete Fixture

LM-79 IESNA Certified Photometry from Independent Lab



LED manufacturers maintain a tolerance of +/-7% on flux (lumens) and power (electrical) measurements.

▲ Cone of Light Key  
Dia. (in ft.) shown is where FC value is half the FC at nadir.  
Dist. Distance (Ft.) from fixture  
FC Footcandles at nadir (0°)  
Dia. Circle of light at 50% of FC

LIMITED WARRANTY: CATALOGED KIRLIN EXISTING ARE WARRANTED FREE OF DEFECTS IN WORKMANSHIP OR MATERIAL FOR FIVE YEARS FROM DATE OF PURCHASE. INSTALLED TO N.E.C. IN NORMAL USE. Manufacturer at his option will replace or repair such fixture or refund the purchase price on presentation of proof of purchase and defective fixture at the offices of manufacturer within five years of original shipment. Liability of manufacturer is limited to the foregoing and manufacturer shall not be liable for any other damages, direct or indirect, sustained or suffered by purchaser or any person. This warranty is supplied to the buyer in place of all other warranties, expressed or implied. Seller does not warrant as to merchantability or fitness for a particular use, nor will any oral statement constitute a warranty or amend this specific warranty. Abnormal use, abuse of the fixture, improper installation, or repair or modification of the fixture without prior written authorization from the manufacturer will render the warranty void.

LATITUDES  
NOVEMBER 2024