

CATALOG #	TYPE
JOB NAME	VOLTAGE

LRR-04403-2500L

Lensed 4" Downlight • White Flare • LED

Up to 60,000 Hour Life • Wet Location
 10% Dimming • 2 Distributions • 5 CCT • 3-Step Binning
 LM-80 Qualified • LM-79 Certified



Specifications

Delivered System Performance*

- Lumen Series: **MUST SPECIFY**
 -2500L: 2500 nominal lumens (35W).
- Distribution: MFL standard.
 Optional: -NFL.
- Color temperature: 3500°K standard.
 Optional: -27K, -30K, -41K or -50K.
- CRI: 80+ standard. Optional: -HC (90+).
- 60,000 hour life (L70).
- Fully sustainable: removable for servicing.

Thermal Protection: SPECIFY VOLTAGE

- Thermal protector for insulation detection per UL/NEC. Must specify input voltage.

Thermal Management System

- All aluminum heat sink, components and housing maximize cool operation and long life while minimizing maintenance.

LED Power Supply - INTERNAL

- Suitable for outdoor / indoor use:
 -30°C (-22°F) to 60°C (140°F) standard.

- 120-277V / 50-60Hz standard. Load insensitive.
- 0-10V CCR dimming standard. (100-10%)**

Trim and Optical Assembly

- Seamless tapered aluminum self-flanged trim with white finish (field paintable).
- Regressed tempered prismatic spread lens.

Acrylic Enameled Aluminum Housing

- Rustproof and corrosion resistant: Exceeds 1000 hour ASTM 5% salt spray test.
- Shallow depth fits restricted plenums.
- Cool operation: Extends life of all components.

- Entire luminaire, including LED light engine, is modular, easily visible and serviced through aperture.

- Built-in plaster flange.

Outlet Box

- UL listed J-box with insulated removable cover. Prewired 14 GA (NEC) with ½" and ¾" knockouts.

Installation

- Recess indoor or outdoor.
- Accommodates ceilings up to 1-1/8" thick or see Option -79.
- Compatible with fire rated enclosures (by others).
- 27" galvanized hanger bars with adjustable mounting brackets (2) supplied.

UL, C-UL (Canada) Listings

- Wet, damp or dry locations, covered ceilings.
- Through-branch conductors (4 #12 AWG 90°C).

IEC & FCC Compliance

- Meets IEC/EN 60601-1-2 electromagnetic compatibility standard for medical electrical equipment.
- FCC Part 15 certified for EMI/RFI emissions.

5 Year FIVE YEAR Limited Warranty

- Complete standard fixture.

MUST SPECIFY		OPTIONAL	Ordering Example: LRR-04403-2500L-120-30K-NFL
Product Number	Voltage	Options	
LRR-04403-2500L	-120 (120 volts) -277 (277 volts) -97 (Specify other)	See "Options" below	

Options

Input Power: SPECIFY

- 120 120V (50-60Hz) input for thermal protector.
- 277 277V (50-60Hz) input for thermal protector.
- 97 Specify other voltage. Consult factory.

LED Power Supply

- D1 0-10V 1.0% dimming instead.
- D2 0-10V 0.1% dimming instead.
- D3 DALI 1.0% dimming instead.
- D4 DALI 0.1% dimming instead.
- D40 -40°C driver with 0-10V 10% dimming instead.
- ECO Digital driver for Lutron EcoSystem controls. Dims to 1% or consult factory.
- ERH REMOTE emergency battery pack. Delivers 1000 lumens. Run time: 90+ minutes. CEC Compliant.

Color Temperature (CCT)

- 27K Color temperature 2700°K instead.
- 30K Color temperature 3000°K instead.
- 41K Color temperature 4100°K instead.
- 50K Color temperature 5000°K instead.
- HC 90+ CRI instead. Consult factory.

Optics

- NFL Narrow flood distribution.

Trim

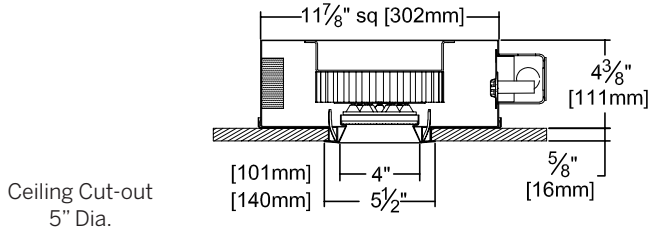
- 13 Clear poly lens below lens. Photometric distribution is unaffected.
- 23 Frosted microprismatic lens instead.
- 32 White oversize trim ring. Specify O.D.
- 33 Decorative Glow Ring; see last page for details.
- 35T Silver enamel (complete trim).
- 37T Dark bronze enamel (complete trim).
- 38T Black enamel (complete trim).

- 45 Gasket between trim flange and ceiling.
- 62T Clear specular (complete trim).
- 70T Clear semi-specular SofTex™ (complete trim).
- 94 Custom color/finish. Specify. Consult factory.
- CF Custom color filter (Rosco). Specify.
- WA White acrylic (flat) diffuser instead; will produce wide flood distribution.

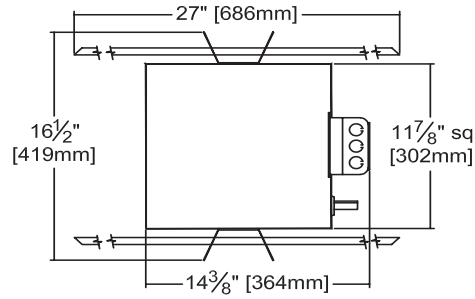
Other

- 79 Extension collar for up to 2" thick ceilings.
- 99 Special modification. Consult factory.
- FS Single in-line fuse.
- NAT Modified for natatorium use.
- RH Residential mounting hardware instead. Suitable for wood joist ceilings with spacing from 14 7/8" to 25 7/8" with 5/8" vertical adjustability.

Dimensions



Ceiling Cut-out
5" Dia.



Detailed Photometry - Installed Fixture

Photometric testing done in accordance with IESNA LM-79

Photometry from UL Verification Services, Allentown, PA

-2500L STANDARD (MFL)

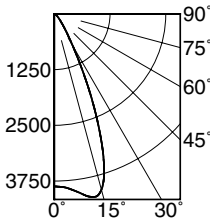
Lumens: 2800
Beam: ~45°
SC: 0.8
LPW: 77
Efficiency: 75.3%
UL Test: 1259175



Total System Watts 36.4

Cone of Light ▲

Dist.	FC	Dia.
6	1070	5.0
8	60.5	6.6
10	38.7	8.3
12	26.9	9.9
14	19.7	11.6
16	15.1	13.2



	CANDLEPOWER DISTRIBUTION				
	0.0	22.5	45.0	67.5	90.0
0	3869	3869	3869	3869	3869
5	3939	3939	3939	3939	3939
15	4083	4083	4083	4083	4083
25	1765	1765	1765	1765	1765
35	418	418	418	418	418
45	147	147	147	147	147
55	65	65	65	65	65
65	32	32	32	32	32
75	14	14	14	14	14
85	3	3	3	3	3
90	0	0	0	0	0

-2500L Option -NFL

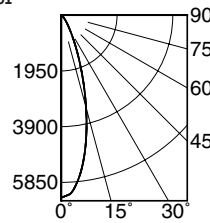
Lumens: 2390
Beam: ~29°
SC: 0.5
LPW: 65
Efficiency: 64.3%
UL Test: 12591761



Total System Watts 36.6

Cone of Light ▲

Dist.	FC	Dia.
6	1770	3.1
8	99.8	4.1
10	63.8	5.1
12	44.3	6.2
14	32.6	7.2
16	24.9	8.2



	CANDLEPOWER DISTRIBUTION				
	0.0	22.5	45.0	67.5	90.0
0	6384	6384	6384	6384	6384
5	5947	5947	5947	5947	5947
15	3342	3342	3342	3342	3342
25	1146	1146	1146	1146	1146
35	344	344	344	344	344
45	114	114	114	114	114
55	46	46	46	46	46
65	30	30	30	30	30
75	15	15	15	15	15
85	4	4	4	4	4
90	2	2	2	2	2

LM-80 Qualified • LM-79 Certified Photometry

* LED manufacturers maintain a tolerance of ±7% on flux (lumens) and power (electrical) measurements. Kirlin photometrics are actual test data from UL Verification Services (UL) where photometry was measured from 3717 lumen (-2500L) light engines (within the established tolerance).

▲ Cone of Light Key
Dia. (in ft.) shown is where FC value is half the FC at nadir.

Dist. Distance (Ft.) from fixture
FC Footcandles at nadir (0°)
Dia. Circle of light at 50% of FC

SUBMITTAL DATA

APPROVAL STAMP

JOB NAME _____
TYPE _____ VOLTAGE _____
CATALOG NUMBER _____



LIMITED WARRANTY: CATALOGED KIRLIN FIXTURES ARE WARRANTED FREE OF DEFECTS IN WORKMANSHIP OR MATERIAL FOR FIVE YEARS FROM DATE OF PURCHASE. INSTALL TO N.E.C. IN NORMAL USE. Manufacturer at the option will replace or repair such fixture or refund the purchase price on presentation of proof of purchase and defective fixture at the offices of manufacturer within five years of original shipment. Liability of manufacturer is limited to the original manufacturer and manufacturer shall not be liable for any other damages, direct or indirect, sustained or suffered by purchaser or any person. This warranty is supplied to the buyer in place of all other warranties, expressed or implied. Seller does not warrant as to merchantability or fitness for a particular use, nor will any oral statement constitute a warranty or amend this specific warranty. Abuse of the fixture, improper installation, or repair or modification of the fixture without prior written authorization from the manufacturer will render the warranty void.