

CATALOG #	TYPE	
JOB NAME	WATTAGE	VOLTAGE

# Choice Series

## Open Adjustable 4" Downlight • COB LED

**45° Max Tilt** • 50,000+ Hours • Type IC • 1.0% Dimming, 0-10V  
2 or 3 Step Binning • Wet Listed • LM-80 and LM-79 Certified

### Specifications

#### Delivered System Performance

- Lumen Series: **Must Specify**

Type IC	Non-IC
-3000L	-4000L
-2500L	
-2000L	
-1500L	
-1000L	
- Select trim & beam distribution: see chart
- Select color (CCT): see chart: 80+ CRI standard; Option -HC for 90+ (15% lumen loss)
- 60,000 hour life, 50,000 in insulation

#### Thermal Management System

- Aluminum heat sink and components for cool operation, long life, and low maintenance

#### LED Driver - INTERNAL

- Indoor/Outdoor: -30°C to 60°C (-22°F to 140°F)
- 0-10V CCR 1.0% dimming standard
- Voltage Options: **Must Specify**
  - UNV: -120-277/50-60Hz; load insensitive
  - 120: -120V input (50-60Hz); for -29 only

#### Trim Assembly/Optics

- Self-flanged clear Softex™ Semi Specular angle-cut cone (see -DL for downlight cone)
- Optional colors and finishes available
- Optics self-align with trim; hot aiming by hand
- Tilts 0-45°; rotates 360°; locks in place
- Accommodates sloped ceilings to 45°

#### Acrylic Enameled Aluminum Housing

- Rustproof: exceeds 1000 hour ASTM 5% salt spray test; all components fully sustainable
- Shallow depth for restricted plenums
- Cool operation extends component life
- Visible and fully serviceable through aperture

#### Outlet Box (Galvanized)

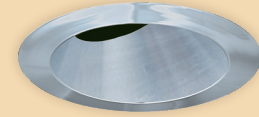
- UL Listed, 14GA, insulated, removable cover
- ½" and ¾" knockouts
- Up to 4 #12 AWG through-branch conductors

#### Installation & Hardware

- Indoor/outdoor in ceilings up to 1½" thick
- Compatible with fire rated enclosures (by others)
- 27" hanger bars & adjusting brackets (2) supplied

# LRC-04CAD

### Trim Options



-RND



-SQR

#### UL, C-UL (Canada) & FCC Compliance

- UL Listed: wet, damp or dry locations, covered ceilings
- Type IC up to -3000L; Non-IC for -4000L
- FCC Part 15 certified for EMI/RFI emissions

#### FIVE YEAR Limited Warranty

- Complete standard fixture



Made in the USA



BioGard™  
See Option -BG



FCC Part 15  
Certified



UL Listed  
Wet, Damp, Dry

## Options and Ordering Configuration

(Example: LRC-04CAD-3000L-UNV-RND-NFL-30K-30F-AT)

Must Specify						Optional			
Model	Lumens	Volts	Trim	Beam	CCT† & CRI	Driver Options	Emergency Options	Trim Options	Other Options
LRC-04CAD									
	Non-IC	-UNV	-RND	-SPT	80+ CRI*	(Blank): Standard 0-10V CCR 1.0% dim	(Blank): None	(Blank): Standard Softex™ semi specular diffuse finish	(Blank): None
	-4000L	-120	-SQR	-NFL	-27K: 2700°K	-D2: 0-10V 0.1% dim	-E1: Remote emergency inverter for 100% rated lumens up to -3000L; 90+ minutes. N/A for options -29 or -FS	-30F: White enamel flange	-RH: Joist mounting hardware instead
	Type IC			-MFL	-30K: 3000°K	-D3: DALI 1.0% dim	-E14: Remote emergency inverter for 100% rated lumens up to -4000L; 90+ minutes. N/A for options -29 or -FS (CEC Compliant)	-30T: White enamel trim	-99: Special modification; consult factory
	-3000L			-WFL	-35K: 3500°K	-D4: DALI 100-0.1% dim	-E14: Remote emergency inverter for 100% rated lumens up to -4000L; 90+ minutes. N/A for options -29 or -FS (CEC Compliant)	-30T: White enamel trim	-AT: Air Tight version; Meets ASTM E283 airflow restriction of 2CFM max
	-2500L				-40K: 4000°K	-D5: DMX512A 0.1% dim	-EM: Internal emergency battery pack; Delivers 700 lumens; 90+ minutes (CEC Compliant)	-37F: Dark bronze enamel flange	-FS: Fused primary; One per fixture; N/A for Options -E1, -E14
	-2000L				-50K: 5000°K	-D6: Triac/ELV dim - 120 volt only	-ERH: Remote emergency battery pack; Delivers 1000 lumens; 90+ minutes (CEC Compliant)	-38F: Black enamel flange	
	-1500L				*Note: Lumen Factor = 0.93 for -27K	-ECO: Lutron EcoSys; Dim-to-black		-62T: Clear specular finish trim	
	-1000L				90+ CRI**	-29: Lutron 2-wire PWM dim - 120 volt only		-94: Custom color; consult factory	
					-27K-HC: 2700°K			-BG: BioGard™ anti-microbial white	
					-30K-HC: 3000°K			<b>Other Trim Features</b>	
					-35K-HC: 3500°K			-32: White trim extender; specify OD	
					-40K-HC: 4000°K			-45: Gasket between trim & ceiling	
					-50K-HC: 5000°K (-2500L or below)			-DF: Electrically isolated trim	
					**Note: Lumen Factor = 0.79 for -27K-HC; All Others = 0.85			-DL: Downlight cone instead	

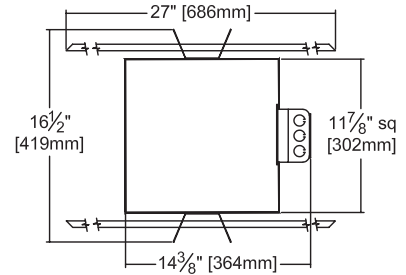
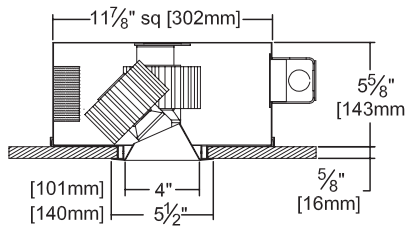
† For 2 SDCM, consult factory

## Performance Factors

NOMINAL LUMENS	LUMEN FACTOR	NOMINAL WATTS	LPW FACTOR
-4000L	1.74	39.2	0.90
-3000L	1.31	27.5	0.98
-2500L	1.16	24.7	0.96
<b>-2000L</b>	<b>1.00</b>	<b>20.3</b>	<b>1.00</b>
-1500L	0.73	14.4	1.03
-1000L	0.53	10.7	1.02

\* See notes on page 1 for additional info on Lumen Factors

## Dimensions



**Ceiling Cut-out**  
5" Dia. (-RND)  
5 1/4" Sq. (-SQR)

## Photometry - Installed Complete Fixture

Photometry from I.T.L., Boulder, CO

LM-79 IESNA Certified Photometry from Independent Lab

**-2000L-RND-SPT**

Lumens: 2190  
LPW: 107  
Beam: ~28°  
SC: 0.46  
ITL Test: 92669

Nominal Lumens	Actual Lumens	Actual LPW
4000L	3804	97.0
3000L	2869	104.3
2500L	2547	103.1
<b>2000L</b>	<b>2190</b>	<b>107.4</b>
1500L	1594	110.7
1000L	1167	109.1

**-2000L-RND-NFL**

Lumens: 2198  
LPW: 108  
Beam: ~43°  
SC: 0.68  
ITL Test: 92670

Nominal Lumens	Actual Lumens	Actual LPW
4000L	3818	97.4
3000L	2879	104.7
2500L	2556	103.5
<b>2000L</b>	<b>2198</b>	<b>107.7</b>
1500L	1600	111.1
1000L	1172	109.5

**-2000L-RND-MFL**

Lumens: 2195  
LPW: 108  
Beam: ~48°  
SC: 0.76  
ITL Test: 92671

Nominal Lumens	Actual Lumens	Actual LPW
4000L	3814	97.3
3000L	2877	104.6
2500L	2554	103.4
<b>2000L</b>	<b>2196</b>	<b>107.6</b>
1500L	1599	111.0
1000L	1170	109.4

**-2000L-RND-WFL**

Lumens: 2147  
LPW: 105  
Beam: ~58°  
SC: 0.88  
ITL Test: 92672

Nominal Lumens	Actual Lumens	Actual LPW
4000L	3729	95.1
3000L	2813	102.3
2500L	2497	101.1
<b>2000L</b>	<b>2147</b>	<b>105.2</b>
1500L	1563	108.5
1000L	1144	106.9

**-2000L-SQR-SPT**

Lumens: 2249  
LPW: 110  
Beam: ~27°  
SC: 0.46  
ITL Test: 92679

Nominal Lumens	Actual Lumens	Actual LPW
4000L	3907	99.7
3000L	2946	107.1
2500L	2616	105.9
<b>2000L</b>	<b>2249</b>	<b>110.2</b>
1500L	1637	113.7
1000L	1199	112.0

**-2000L-SQR-NFL**

Lumens: 2272  
LPW: 111  
Beam: ~45°  
SC: 0.69  
ITL Test: 92680

Nominal Lumens	Actual Lumens	Actual LPW
4000L	3946	100.7
3000L	2976	108.2
2500L	2642	107.0
<b>2000L</b>	<b>2272</b>	<b>111.4</b>
1500L	1654	114.9
1000L	1211	113.2

**-2000L-SQR-MFL**

Lumens: 2261  
LPW: 111  
Beam: ~49°  
SC: 0.78  
ITL Test: 92681

Nominal Lumens	Actual Lumens	Actual LPW
4000L	3927	100.2
3000L	2962	107.7
2500L	2630	106.5
<b>2000L</b>	<b>2261</b>	<b>110.8</b>
1500L	1646	114.3
1000L	1205	112.6

**-2000L-SQR-WFL**

Lumens: 2263  
LPW: 111  
Beam: ~62°  
SC: 0.94  
ITL Test: 92682

Nominal Lumens	Actual Lumens	Actual LPW
4000L	3931	100.3
3000L	2965	107.8
2500L	2632	106.6
<b>2000L</b>	<b>2263</b>	<b>110.9</b>
1500L	1647	114.4
1000L	1206	112.7

LED manufacturers maintain a tolerance of +/-7% on flux (lumens) and power (electrical) measurements.

▲ **Cone of Light Key**      **Dist.** Distance (Ft.) from fixture  
 Dia. (in ft.) shown is where FC      **FC** Footcandles at nadir (0°)  
 value is half the FC at nadir.      **Dia.** Circle of light at 50% of FC

LIMITED WARRANTY: KIRLIN LIGHTING FIXTURES ARE WARRANTED FREE OF DEFECTS IN WORKMANSHIP OR MATERIAL FOR A PERIOD OF FIVE (5) YEARS FROM DATE OF PURCHASE. INSTALLATION, REPAIR, MAINTENANCE, AND/OR MODIFICATION OF THE FIXTURE SHALL BE THE RESPONSIBILITY OF THE INSTALLER. THE WARRANTY SHALL NOT BE VALID UNLESS THE FIXTURE IS INSTALLED AND MAINTAINED IN ACCORDANCE WITH THE INSTALLATION INSTRUCTIONS PROVIDED BY KIRLIN LIGHTING. THE WARRANTY SHALL NOT BE VALID UNLESS THE FIXTURE IS INSTALLED AND MAINTAINED IN ACCORDANCE WITH THE INSTALLATION INSTRUCTIONS PROVIDED BY KIRLIN LIGHTING. THE WARRANTY SHALL NOT BE VALID UNLESS THE FIXTURE IS INSTALLED AND MAINTAINED IN ACCORDANCE WITH THE INSTALLATION INSTRUCTIONS PROVIDED BY KIRLIN LIGHTING.

CHOICE SERIES  
APR 2021