

CATALOG #	TYPE
JOB NAME	VOLTAGE

## LED 7" Downlight Upgrade Kit • UL • Type IC

10% Dimming • 3 Distributions • 4 CCT • 3-Step Binning  
 Regressed Lens • White Trim • For Existing Kirlin Housings



LKR-07027-2000L  
 LKR-07027-1500L  
 LKR-07027-1200L  
 LKR-07027-1000L

### Specifications

#### Optical Assembly

#### Delivered System Performance\*

- Lumen Series: **MUST SPECIFY**
- 2000L: 2000 nominal lumens (25W).
- 1500L: 1500 nominal lumens (20W).
- 1200L: 1200 nominal lumens (14W).
- 1000L: 1000 nominal lumens (10W).
- Distribution: WFL standard.
- Optional: -NFL or -MFL.
- Color temperature: 3500°K standard.
- Optional: -27K, -30K or -41K.
- CRI: 80+. Exceptionally consistent color.
- Optional: -HC (90+).
- LM-80 Qualified LEDs provide up to 90,000 hour life (L70).
- Fully sustainable: removable for servicing.

#### Thermal Management System

- All aluminum heat sink and components maximize cool operation and long life while minimizing maintenance.

#### LED Power Supply - Integral

- 0-10V CCR dimming standard (100-10%) or see Options.**
- 120-277V / 50-60Hz standard. Load insensitive. Also see Option -97.

- Suitable for outdoor / indoor use: -30°C (-22°F) to 50°C (122°F).

#### Trim and Lens Assembly

- Seamless tapered aluminum white self-flanged trim (field paintable) with high efficiency reflector above.
- Regressed tempered prismatic lens.

#### Installation (Indoor or Outdoor)

- Simple, secure retention of entire kit into existing Kirlin recessed housing aperture.
- Fully sustainable: Revitalize existing fixtures without disturbing the ceiling.

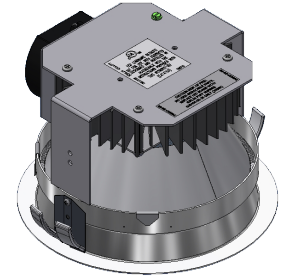
#### UL, C-UL (Canada) Classified Kit

- Type IC, wet, damp or dry locations, covered ceilings, for use in Kirlin fixtures (UL Listed).
- Suitable for all Kirlin housings with a minimum 6.25" depth x 11.75" square size.

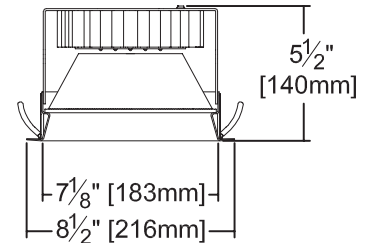
#### IEC & FCC Compliance

- Meets IEC/EN 60601-1-2 electromagnetic compatibility standard for medical electrical equipment.
- FCC Part 15 certified for EMI/RFI emissions.

**5 Year** FIVE YEAR Limited Warranty  
 • Complete standard fixture.



Wide Flood Distribution and 3500°K Standard  
 (or see Options)



Ceiling Cut-out 8" Dia.

MUST SPECIFY	OPTIONAL	Ordering Example: LKR-07027-2000L-30K-MFL
Product Number	Options	
LKR-07027-2000L LKR-07027-1500L LKR-07027-1200L LKR-07027-1000L	See "Options" below	

### Options

#### Input Power

- 97 Specify other voltage. Consult factory.

#### Power Supply (0-10V dim to 10% Std)

- D1† 0-10V 1.0% dimming instead.
- D6† Triac (incandescent) dimming driver instead. 100-10%, 120V only.
- EI Remote emergency inverter for 100% of rated lumens. Run time: 90+ minutes. 120 or 277V, 60Hz input only. Specify voltage. Not for use with Option -29.

#### Color (CCT and CRI) - 35K Std.

- 27K Color temperature 2700°K instead.
- 30K Color temperature 3000°K instead.
- 41K Color temperature 4100°K instead.
- HC 90+ CRI instead.

† Consult factory for use with -2000L lumen series.

#### Distributions (WFL Standard)

- NFL Narrow flood distribution.
- MFL Medium flood distribution.

#### Lens (Prismatic Standard)

- 13 Clear 1/8" polycarbonate added below standard or any optional flat lens.
- 23 Frosted microprismatic glass lens instead. (0.8 LLF)
- CF Custom color filter (Rosco). Specify.
- WA White acrylic (flat) diffuser instead. (0.8 LLF)

#### Trim (White Standard)

- 31 White acrylic enameled flange. For use with optional trim finishes only.
- 32 White oversize trim ring. Specify O.D.
- 35F Silver acrylic enameled flange.
- 35T Silver acrylic enameled trim instead.
- 37F Dark bronze acrylic enameled flange.
- 37T Dark bronze acrylic enameled trim instead.
- 38F Black acrylic enameled flange.

- 38T Black acrylic enameled trim instead.
- 45 Gasket between trim flange and ceiling.
- 46 Gasket between trim and lens.
- 62 Specular clear self-flanged trim instead.
- 94 Custom color/finish. Specify. Consult factory.
- BG Anti-microbial Kirlin BioGard™ white (only) trim finish instead.

#### Other

- 99 Special modification. Consult factory.

Projected L70** for LEDs in Kirlin Upgrade Kit	
In Open Plenum	90,000 hours
In Insulation (Type IC)	60,000 hours

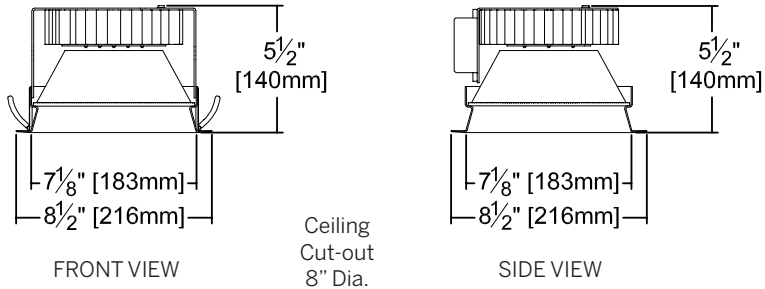
\*\* Hours of 70% lumen maintenance

**Lumen Output Factors**

APPLY THESE FACTORS TO LUMENS SHOWN BELOW

LUMEN SERIES	OUTPUT FACTOR	CFL or MH MEAN LUMENS EQUIVALENT
-2000L	1.257	2x32W CFL 70W MH
-1500L	1.000	2x26W CFL 39-50W MH
-1200L	0.812	1x42W CFL
-1000L	0.578	1x32W CFL 2x18W CFL

**Dimensions**



**Detailed Photometry - Installed Fixture**

Photometric testing done in accordance with IESNA LM-79

Photometry from I.T.L., Boulder, CO

**-1500L Standard (WFL)**

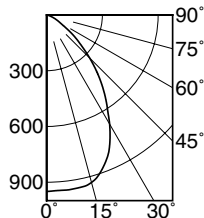
Lumens: 1514  
Beam: ~58°  
SC: 1.1  
LPW: 71  
Efficiency: 74.9%  
ITL Test: 85867



Total System Watts 21.2

**Cone of Light ▲**

Dist.	FC	Dia.
6	26.4	6.6
8	14.8	8.8
10	9.5	11.0
12	6.6	13.2
14	4.8	15.4
16	3.7	17.6



	CANDLEPOWER DISTRIBUTION				
	0.0	22.5	45.0	67.5	90.0
0	950	950	950	950	950
5	947	947	947	947	947
10	933	933	933	933	933
15	797	797	797	797	797
20	556	556	556	556	556
25	328	328	328	328	328
30	143	143	143	143	143
35	54	54	54	54	54
40	13	13	13	13	13
45	0	0	0	0	0
90	0	0	0	0	0

**-1500L Option -NFL**

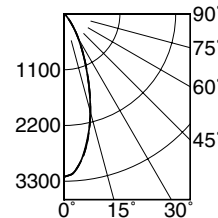
Lumens: 1553  
Beam: ~33°  
SC: 0.6  
LPW: 74  
Effic: 76.8%  
ITL Test: 87936



Total System Watts 20.9

**Cone of Light ▲**

Dist.	FC	Dia.
6	89.3	3.5
8	50.2	4.7
10	32.1	5.9
12	22.3	7.1
14	16.4	8.2
16	12.6	9.4



	CANDLEPOWER DISTRIBUTION				
	0.0	22.5	45.0	67.5	90.0
0	3213	3213	3213	3213	3213
5	3035	3041	3039	3038	3032
10	2002	1982	2002	1989	1991
15	912	902	909	908	903
20	316	307	313	318	311
25	76	75	77	78	78
30	30	30	30	30	30
35	11	11	11	12	11
40	2	2	2	2	3
45	0	0	0	0	0
90	0	0	0	0	0

**-1500L Option -MFL**

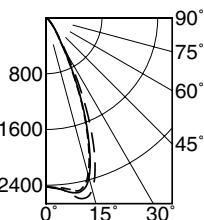
Lumens: 1721  
Beam: ~45°  
SC: 0.8  
LPW: 83  
Effic: 85.1%  
ITL Test: 87190



Total System Watts 20.8

**Cone of Light ▲**

Dist.	FC	Dia.
6	67.3	4.9
8	37.8	6.6
10	24.2	8.2
12	16.8	9.9
14	12.4	11.5
16	9.5	13.2



	CANDLEPOWER DISTRIBUTION				
	0.0	22.5	45.0	67.5	90.0
0	2421	2421	2421	2421	2421
5	2446	2449	2467	2478	2469
10	2322	2445	2552	2481	2371
15	978	1116	1234	1147	1018
20	251	266	280	274	263
25	89	91	91	95	94
30	34	34	34	35	35
35	13	13	13	13	13
40	2	2	2	2	2
45	0	0	0	0	0
90	0	0	0	0	0

**LM-80 Qualified • LM-79 Certified Photometry**

\* LED manufacturers maintain a tolerance of ±7% on flux (lumens) and power (electrical) measurements. Kirlin photometrics are actual test data from Independent Testing Laboratories (ITL) where photometry was measured from 2022 lumen (-1500L) light engines (within the established tolerance).

▲ **Cone of Light Key**  
Dia. (in ft.) shown is where FC value is half the FC at nadir.  
Dist. Distance (Ft.) from fixture  
FC Footcandles at nadir (0°)  
Dia. Circle of light at 50% of FC

**SUBMITTAL DATA**

JOB NAME \_\_\_\_\_  
TYPE \_\_\_\_\_  
WATTAGE \_\_\_\_\_ VOLTAGE \_\_\_\_\_  
CATALOG NUMBER \_\_\_\_\_

**APPROVAL STAMP**



LIMITED WARRANTY: CATALOGED KIRLIN FIXTURES ARE WARRANTED FREE OF DEFECTS IN WORKMANSHIP OR MATERIAL FOR FIVE YEARS FROM DATE OF PURCHASE. INSTALLER TO N.E.C. IN NORMAL USE. Manufacturer at the option will replace or repair such fixture or refund the purchase price on presentation of proof of purchase and defective fixture at the offices of manufacturer within five years of original shipment. Liability of manufacturer is limited to the original manufacturer and manufacturer shall not be liable for any other damages, direct or indirect, sustained or suffered by purchaser or any person. This warranty is supplied to the buyer in place of all other warranties, expressed or implied. Seller does not warrant, as to merchantability or fitness for a particular use, nor will any oral statement constitute a warranty or amend this specific warranty. Abnormal use, abuse of the fixture, improper installation, or repair or modification of the fixture without prior written authorization from the manufacturer will render the warranty void.