

CATALOG #	TYPE	
JOB NAME	WATTAGE	VOLTAGE

Retrofit Series

6" Downlight Upgrade Kit • LED • Sustainable

For Existing Kirlin Housings • Type IC

LM-79 Certified • LM-80 Qualified

LKR-06120



Specifications

Delivered System Performance

- Nominal Lumens: **Must Specify**

Type IC

-2000L

-1500L

-1100L

- Select trim: see chart
- Beam distribution: WFL
- Select color (CCT): see chart; 80+ CRI standard
- 50,000 hour rated life (L70**)

Thermal Management System

- Aluminum heat sink and components for cool operation, long life, and low maintenance

LED Driver - INTERNAL

- Indoor/Outdoor: -30°C to 50°C (-22°F to 122°F)
- 0-10V linear dimming standard (100-1%)
- 120-277V / 50-60 Hz standard; load insensitive

Trim and Assembly

- White aluminum self-flanged downlight trim. Other finishes available. See Options.

Installation (Indoor or Outdoor)

- Simple, secure retention of entire kit into existing Kirlin recessed housing aperture
- Fully sustainable: Revitalize existing fixtures without disturbing the ceiling
- Modular kit is conveniently serviceable through aperture

UL, C-UL (Canada) Classified Kit

- Type IC, wet, damp or dry locations, covered ceilings, for use in Kirlin fixtures (UL Listed)
- Suitable for all Kirlin housings with a minimum 5" depth x 11.75" square size

IEC & FCC Compliance

- Meets IEC/EN 60601-1-2 electromagnetic compatibility standard for medical electrical equipment
- FCC Part 15 certified for EMI/RFI emissions

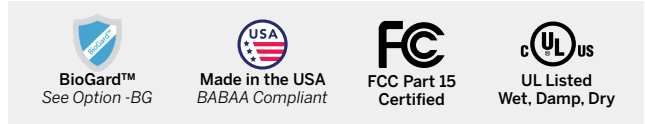
FIVE YEAR Limited Warranty

- Complete kit

Options and Ordering Configuration

(Example: LKR-06120-1500L-120-41K-BG-13)

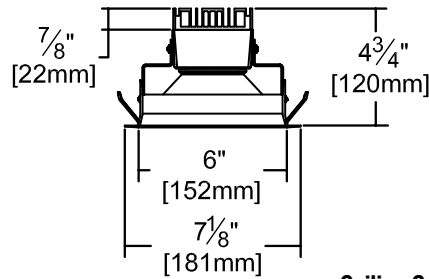
Must Specify						
Model	Lumens	Volts	CCT† & CRI	Emergency Options	Trim Options	Other Options
LKR-06120	-2000L -1500L -1100L	(Blank): 120-277 -120 -277 -97†: Other Voltage	(Blank): 3500°K, 80+ CRI 80+ CRI* -30K: 3000°K -35K: 3500°K -41K: 4000°K	(Blank): None -E1: Remote emergency inverter for 100% rated lumens; Run time: 90+ minutes. 120 or 277V, 60 Hz only; specify voltage	(Blank): Standard white trim with prismatic spread lens Trim Finishes -31: White acrylic enameled flange. For use with optional trim finishes only -35F: Silver enamel (flange only) -35T: Silver enamel (complete trim) -37F: Dark bronze enamel (flange only) -37T: Dark bronze enamel (complete trim) -38F: Black enamel (flange only) -38T: Black enamel (complete trim) -70: SofTex clear self-flanged trim instead -BG: BioGard™ anti-microbial white -BKBG: BioGard™ anti-microbial black -94: Custom color; consult factory -94BG: BioGard™ anti-microbial custom color finish Other Trim Features -32: White oversize trim ring. Specify O.D. -45: Gasket between trim flange and ceiling -CF: Custom color filter (Rosco); Specify	(Blank): None -99: Special modification; consult factory
†Consult factory						
Projected L70** for Kirlin Luminaires						
In Open Plenum	50,000 hours					
In Insulation (Type IC)	50,000 hours					
**Hours at 70% lumen maintenance						



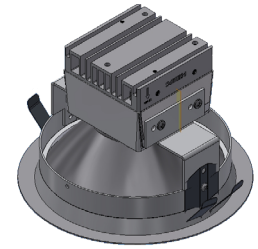
Performance Factors

NOMINAL LUMENS	LUMEN FACTOR	NOMINAL WATTS	LPW FACTOR	CFL or MH MEAN LUMENS EQUIVALENT
-2000L	1.00	19.9	1.00	70W MH
-1500L	0.75	14.9	1.00	39-50W MH
-1100L	0.55	10.9	1.00	1x42W CFL

Dimensions



Ceiling Cut-out
6½" Dia.

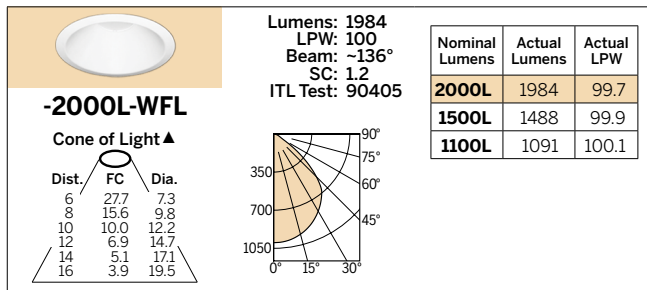


-2000L Version Shown
Lower Lumen Versions
are 3½" Depth

* See notes on page 1 for additional info on Lumen Factors

Photometry - Installed Complete Fixture

LM-79 IESNA Certified Photometry from Independent Lab



LED manufacturers maintain a tolerance of +/-7% on flux (lumens) and power (electrical) measurements.

LIMITED WARRANTY: CATALOGED KIRLIN FIXTURES ARE WARRANTED FREE OF DEFECTS IN WORKMANSHIP OR MATERIAL FOR FIVE YEARS FROM DATE OF PURCHASE. INSTALLED TO N.E.C. IN NORMAL USE. Manufacturer at his option will replace or repair such fixture or refund the purchase price on presentation of proof of purchase and defective fixture at the office of manufacturer within the warranty period. Liability of manufacturer is limited to the foregoing and manufacturer shall not be liable for any other damages, direct or indirect, sustained or suffered by purchaser or any person. This warranty is applied to the buyer in place of all other warranties, expressed or implied. Seller does not warrant as to merchantability or fitness for a particular use, nor will any oral statement constitute a warranty or amend this specific warranty. Abnormal use, abuse of the fixture, improper installation, or repair or modification of the fixture without prior written authorization from the manufacturer will render the warranty void.

RETROFIT
NOVEMBER 2024