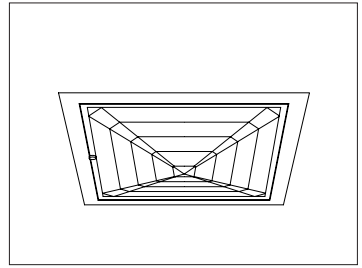


CATALOG #	TYPE	
JOB NAME	WATTAGE	VOLTAGE

10" x 10" 1 A23 200 WATT MAXIMUM

IRS-10150

Higher Wattage Square K-Lens Downlight



Recessed Round
Kirlin Lens
Shallow Plenum

Specifications

Lamp / Socket

- Designed for one horizontal frosted incandescent lamp (by others): 200W maximum A23.
- Dimmable (controls by others).
- Glazed porcelain medium base socket.

Reflector

- GlasSurfaced™ multi-faceted specular aluminum.

Trim Assembly

- Tempered prismatic shock-resisting spread Kirlin lens. See Options for other lenses available.
- Rustfree polished nickel stainless door (304-L) and captive thumb screw. Concealed hinges for fast relamping.
- Attractively beveled cast aluminum frame tooled to ensure close fit with door. White acrylic finish.

Aluminum Housing

- Cool. Acrylic enameled 100% aluminum.

- Rustproof and corrosion resistant: Exceeds 1000 hour ASTM 5% salt spray test.
- Dissipates heat across entire surface area extending component life.
- Entire luminaire visible and serviceable from below through aperture.

Outlet Box and Thermal Protection

- UL listed J-box with insulated removable cover. Prewired 14 GA (NEC) with 1/2" and 3/4" knockouts.
- Thermal protector (per current NEC) provides automatic cut-off if rated temperature is exceeded.

Installation

- 27" galvanized hanger bars supplied (2).
- Fully adjustable universal galvanized mounting brackets supplied (2).
- Recesses indoor or outdoor in covered ceilings.

UL, C-UL (Canada) Listings

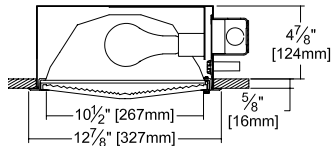
- Wet, damp or dry locations, covered ceilings.
- Through-branch conductors (6 #12 AWG 90°C).

Three Year Limited Warranty

- Complete standard fixture.

Performance at a Glance

IRS-10150

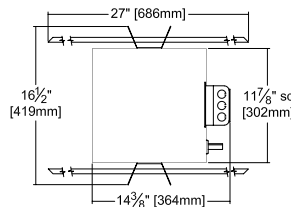


Ceiling Cut-out
12 1/4" Sq.

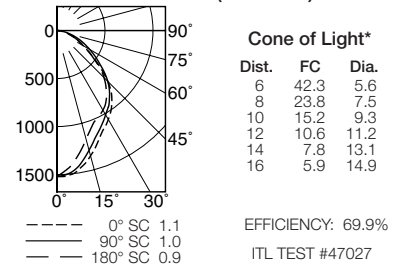


Cone of Light Key
Ft. Distance from fixture
FC Footcandles at nadir (0°)
Dia. Circle of light at 50% of FC

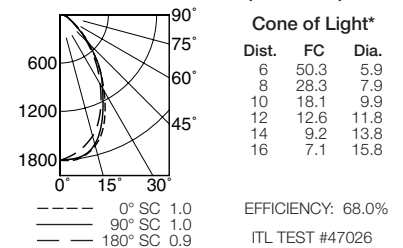
* Dia. (in ft.) shown is where FC value is half the FC at nadir.



IRS-10150 (200 Watt)



IRS-10150-15 (200 Watt)



THE KIRLIN COMPANY

3401 EAST JEFFERSON AVENUE • DETROIT, MICHIGAN 48207-4232
(313) 259-6400 • Fax: (313) 259-9409 OR (313) 259-3121 • www.kirlinlighting.com

TUNGSTEN HALOGEN &
INCANDESCENT LIGHTING

MAXIMUM WATTAGE

200

CATALOG NUMBER

IRS-10150

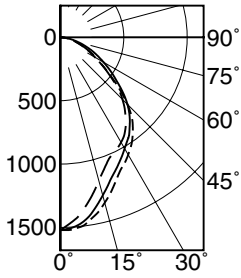
DUE TO OUR CONTINUING EFFORT TO IMPROVE PRODUCTS, TECHNICAL INFORMATION IS SUBJECT TO CHANGE WITHOUT NOTICE.

Alzak® is a registered trademark of ALCOA.

Detailed Photometry - Installed Fixture

Photometry from I.T.L., Boulder, CO

IRS-10150 (200 Watt)



--- 0° SC 1.1
— 90° SC 1.0
- - - 180° SC 0.9



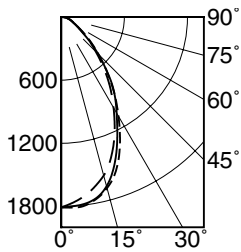
EFFICIENCY : 69.9%

CANDLEPOWER DISTRIBUTION					
	0.0	45.0	90.0	135.0	180.0
0	1521	1521	1521	1521	1521
5	1510	1517	1492	1458	1435
15	1351	1316	1291	1207	1171
25	1140	1000	1094	927	1002
35	988	720	944	689	892
45	748	516	748	507	692
55	428	353	501	341	430
65	236	215	304	210	243
75	111	109	144	106	111
85	29	34	40	34	31
90	5	8	13	10	10

COEFFICIENTS OF UTILIZATION							
RF	20						
RC	80			50			
RW	70	50	30	10	50	30	10
1	90	88	87	86	84	83	82
2	87	85	82	81	81	79	78
3	85	81	79	77	78	76	75
4	82	78	76	73	76	74	72
5	80	76	73	71	74	72	70
6	78	74	70	68	72	70	68
7	76	71	68	66	70	68	66
8	74	70	67	65	69	66	64
9	73	68	65	63	67	64	63
10	71	66	63	62	66	63	61

ITL TEST #47027

IRS-10150-15 (200 Watt)



--- 0° SC 1.0
— 90° SC 1.0
- - - 180° SC 0.9



EFFICIENCY : 68.0%

CANDLEPOWER DISTRIBUTION					
	0.0	45.0	90.0	135.0	180.0
0	1809	1809	1809	1809	1809
5	1815	1820	1798	1774	1750
15	1683	1718	1665	1628	1560
25	1322	1397	1261	1321	1202
35	877	953	879	887	808
45	502	529	496	492	466
55	257	279	233	264	243
65	132	141	132	136	127
75	79	83	79	81	77
85	22	23	24	23	24
90	0	0	0	0	0

COEFFICIENTS OF UTILIZATION							
RF	20						
RC	80			50			
RW	70	50	30	10	50	30	10
1	76	73	71	69	69	67	65
2	70	66	62	59	62	59	57
3	65	60	55	52	57	53	50
4	61	54	49	46	52	48	45
5	57	50	45	41	48	43	40
6	53	46	41	37	44	40	36
7	50	42	37	34	41	36	33
8	47	39	34	31	38	34	30
9	44	36	32	28	35	31	28
10	42	34	29	26	33	29	26

ITL TEST #47026

Options

Wattage and Voltage

- 58 277/120 volt stepdown transformer for 277 volt line input, prewired into fixture; with 277 volt thermal protector.

Lenses and Trims

- 14 Drop Opal glass. 1 1/4" deep. Not enameled.
- 15 Prismatic C#73 tempered glass lens.
- 18 Opal flat glass. Not enameled. Diffusing.

- 20 White aluminum 1/2" cube egg-crate louver.
- 26 Tamper-resistant button head recessed hex screw with center pin and 1 key / 10 fixtures. Also see Option -27.
- 27 Vandal resistant tempered prismatic C#73 spread lens above 1/4" clear tempered glass.
- 32 White oversize trim extender. Specify size.
- 45 Gasket between ceiling and trim frame.
- 46 Gasket between door and trim frame.
- 94 Custom color/finish. Specify. Consult factory.

- DG Die formed steel Drop Guard with C#73 tempered glass lens.
- DH Drop Holophane tempered lens instead.

Other

- 47 Wet plaster frame for wet plaster ceiling.
- 99 Special modification. Consult factory.

SUBMITTAL DATA

APPROVAL STAMP

JOB NAME
TYPE
WATTAGE VOLTAGE
CATALOG NUMBER

LIMITED WARRANTY: CATALOGED KIRLIN FIXTURES ARE WARRANTED FREE OF DEFECTS IN WORKMANSHIP OR MATERIAL FOR THREE YEARS FROM DATE OF PURCHASE. INSTALLED TO N.E.C. IN NORMAL USE. Manufacturer of the option will replace or repair such fixture or refund the purchase price on presentation of proof of purchase and defective fixture at the office of manufacturer within three years of original shipment. Liability of manufacturer is limited to the foregoing and manufacturer shall not be liable for any other damages, direct or indirect, sustained or suffered by purchaser or any person. This warranty is subject to the buyer in place of all other warranties, expressed or implied. Seller does not warrant as to merchantability or fitness for a particular use, nor will any oral statement constitute a warranty or amend this specific warranty. Abnormal use, abuse of the fixture, improper installation, or repair or modification of the fixture without prior written authorization from the manufacturer will render the warranty void.