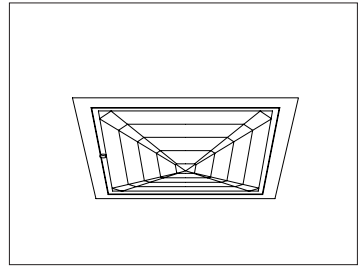


CATALOG #	TYPE	
JOB NAME	WATTAGE	VOLTAGE

8" x 8" 1 A19 100 WATT MAXIMUM Type IC - IRS-08149

## Type IC Recessed Square Classic K-Lens



Recessed Square  
Kirlin Lens  
Shallow Plenum  
Type IC



### Specifications

#### Lamp / Socket

- Designed for one horizontal frosted incandescent lamp (by others): 100W maximum A19.
- Dimmable (controls by others).
- Glazed porcelain medium base socket.

#### Reflector

- GlasSurfaced™ multi-faceted specular aluminum.

#### Trim Assembly

- Tempered prismatic shock-resisting spread Kirlin lens. See Options for other lenses available.
- Rustfree polished nickel stainless door (304-L) and captive thumb screw. Concealed hinges for fast relamping.
- Attractively beveled cast aluminum frame tooled to ensure close fit with door. White acrylic finish.

#### Aluminum Housing

- Cool. Acrylic enameled 100% aluminum.
- Rustproof and corrosion resistant: Exceeds 1000 hour ASTM 5% salt spray test.

- Dissipates heat across entire surface area extending component life.
- Entire luminaire visible and serviceable from below through aperture.

#### Outlet Box and Thermal Protection

- UL listed J-box with insulated removable cover. Prewired 14 GA (NEC) with 1/2" and 3/4" knockouts.
- Thermal protector (per current NEC) provides automatic cut-off if rated wattage is exceeded.

#### Installation

- 27" galvanized hanger bars supplied (2).
- Fully adjustable universal galvanized mounting brackets supplied (2).
- Recesses indoor or outdoor in covered ceilings.

#### UL, C-UL (Canada) Listings

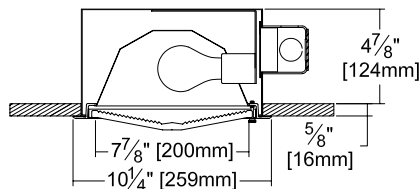
- Wet, damp or dry locations, covered ceilings.
- Through-branch conductors (6 #12 AWG 90°C).
- Type IC. Approved for direct contact with insulation.

#### Three Year Limited Warranty

- Complete standard fixture.

### Performance at a Glance

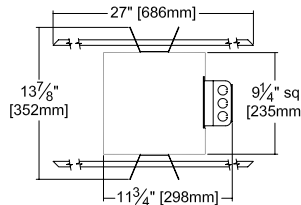
IRS-08149: Type IC



Ceiling Cut-out  
9 1/2" Sq.



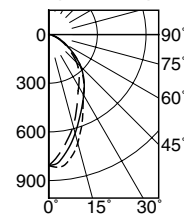
Exceptional  
Energy  
Efficiency



**Cone of Light Key**  
Ft. Distance from fixture  
FC Footcandles at nadir (0°)  
Dia. Circle of light at 50% of FC

\* Dia. (in ft.) shown is where FC value is half the FC at nadir.

IRS-08149  
(100 Watt)



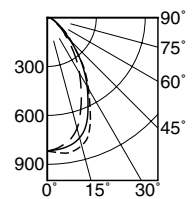
--- 0° SC 0.9  
--- 90° SC 0.8  
--- 180° SC 0.7

EFFICIENCY: 62.6%  
ITL TEST #47021

#### Cone of Light\*

Dist.	FC	Dia.
6	22.4	4.7
8	12.5	6.3
10	8.1	7.9
12	5.6	9.5
14	4.1	11.0
16	3.2	12.6

IRS-08149-15  
(100 Watt)



--- 0° SC 1.0  
--- 90° SC 1.0  
--- 180° SC 0.9

EFFICIENCY: 66.2%  
ITL TEST #47020

#### Cone of Light\*

Dist.	FC	Dia.
6	22.8	6.0
8	12.8	8.0
10	8.2	10.0
12	5.7	12.0
14	4.2	14.0
16	3.2	16.0

## THE KIRLIN COMPANY

3401 EAST JEFFERSON AVENUE • DETROIT, MICHIGAN 48207-4232  
(313) 259-6400 • Fax: (313) 259-9409 OR (313) 259-3121 • www.kirlinlighting.com

TUNGSTEN HALOGEN &  
INCANDESCENT LIGHTING

MAXIMUM WATTAGE

100

CATALOG NUMBER

IRS-08149

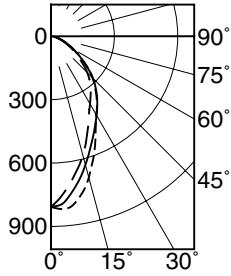
DUE TO OUR CONTINUING EFFORT TO IMPROVE PRODUCTS, TECHNICAL INFORMATION IS SUBJECT TO CHANGE WITHOUT NOTICE.

Alzak® is a registered trademark of ALCOA.

Detailed Photometry - Installed Fixture

Photometry from I.T.L., Boulder, CO

IRS-08149 (100 Watt)



--- 0° SC 0.9  
— 90° SC 0.8  
- - - 180° SC 0.7



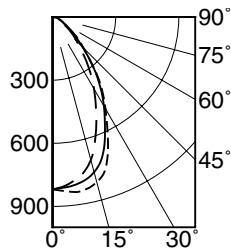
EFFICIENCY : 62.6%

CANDLEPOWER DISTRIBUTION					
	0.0	45.0	90.0	135.0	180.0
0	808	808	808	808	808
5	819	813	783	757	739
15	692	658	630	562	583
25	500	459	487	383	424
35	379	331	382	287	328
45	279	232	280	199	243
55	165	144	167	129	145
65	88	80	88	72	75
75	39	38	35	34	31
85	10	10	8	9	8
90	3	2	2	2	2

COEFFICIENTS OF UTILIZATION							
RF	20						
RC	80			50			
RW	70	50	30	10	50	30	10
1	69	67	65	63	63	61	60
2	64	60	56	53	57	54	51
3	59	54	50	46	51	48	45
4	55	49	44	40	46	43	40
5	51	44	39	36	42	38	35
6	48	41	36	32	39	35	32
7	45	37	33	29	36	32	29
8	42	35	30	27	33	29	26
9	40	32	27	24	31	27	24
10	37	30	25	22	29	25	22

ITL TEST #47021

IRS-08149-15 (100 Watt)



--- 0° SC 1.0  
— 90° SC 1.0  
- - - 180° SC 0.9



EFFICIENCY : 66.2%

CANDLEPOWER DISTRIBUTION					
	0.0	45.0	90.0	135.0	180.0
0	819	819	819	819	819
5	832	829	811	808	800
15	812	805	763	737	703
25	621	692	590	590	490
35	402	453	389	376	305
45	208	235	202	188	162
55	99	110	100	90	79
65	51	55	47	48	45
75	27	30	27	27	25
85	8	8	8	8	8
90	0	0	0	0	0

COEFFICIENTS OF UTILIZATION							
RF	20						
RC	80			50			
RW	70	50	30	10	50	30	10
1	74	71	69	67	67	66	64
2	69	65	61	58	61	59	56
3	64	59	55	51	56	53	50
4	60	54	49	46	51	48	45
5	56	49	45	41	47	43	40
6	53	45	41	37	44	40	37
7	50	42	37	34	41	37	34
8	47	39	34	31	38	34	31
9	44	36	32	29	35	31	29
10	42	34	30	27	33	29	26

ITL TEST #47020

Options

Lenses and Trims

- 14 Drop Opal glass. 1¼" deep. Not enameled.
- 15 Prismatic C#73 tempered glass lens.
- 18 Opal flat glass. Not enameled. Diffusing.
- 20 White aluminum 1/2" cube egg-crate louver.
- 26 Tamper-resistant button head recessed hex screw with center pin and 1 key / 10 fixtures. Also see Option -27.
- 27 Vandal resistant tempered prismatic C#73 spread lens above ¼" clear tempered glass.
- 32 White oversize trim extender. Specify size.
- 45 Gasket between ceiling and trim frame.
- 46 Gasket between door and trim frame.
- 94 Custom color/finish. Specify. Consult factory.

Other

- 47 Wet plaster frame for wet plaster ceiling.
- 99 Special modification. Consult factory.

SUBMITTAL DATA

APPROVAL STAMP

JOB NAME  
TYPE  
WATTAGE  
VOLTAGE  
CATALOG NUMBER

LIMITED WARRANTY: CATALOGED KIRLIN FIXTURES ARE WARRANTED FREE OF DEFECTS IN WORKMANSHIP OR MATERIAL FOR THREE YEARS FROM DATE OF PURCHASE. INSTALL TO N.E.C. IN NORMAL USE. Manufacturer of the fixture will replace or repair such fixture or refund the purchase price on presentation of proof of purchase and defective fixture at the offices of manufacturer within three years of original shipment. Liability of manufacturer is limited to the foregoing and manufacturer shall not be liable for any other damages, direct or indirect, sustained or suffered by purchaser or any person. This warranty is supplied in place of all other warranties, expressed or implied. Seller does not warrant as to merchantability or fitness for a particular use, nor will any oral statement constitute a warranty or amend the specific warranty. Abnormal use, abuse of the fixture, improper installation, or repair, or modification of the fixture without prior written authorization from the manufacturer will render the warranty void.