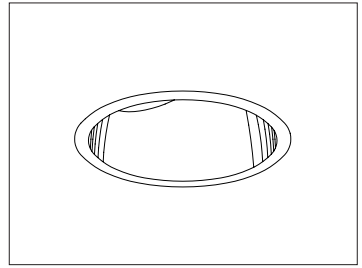


CATALOG #	TYPE	
JOB NAME	WATTAGE	VOLTAGE

8" 1 PAR 56 500 WATT MAXIMUM

IRR-08100

Dramatic Highlighting for High Ceilings



Specifications

Lamp Assembly

- Designed for 1 vertical tungsten halogen lamp (by others):
500W maximum PAR 56.
- Rated 4000 hour life. 100 CRI.
- Tilts 150° for relamping.
- Safety tempered clear flat glass provided.
- Optional safety tempered prismatic C#73 flat glass converts oval beam pattern to round. See Option -15 (for use with medium flood lamp).

Socket Assembly

- Adjustable. 360° rotation; 30° maximum tilt.
- Porcelain mogul end-prong socket.

Reflector

- Self-flanged parabolic specular Alzak® aluminum.
- Optional reflector finishes and colors available.

Aluminum Housing

- Cool. Acrylic enameled 100% aluminum.
- Rustproof and corrosion resistant: Exceeds 1000 hour ASTM 5% salt spray test.

- Dissipates heat across entire surface area extending component life.
- Entire luminaire visible and serviceable from below through aperture.
- For top access, see Option -TA.
- Built-in plaster frame.

Outlet Box and Thermal Protection

- UL listed J-box with insulated removable cover. Prewired 14 GA (NEC) with 1/2" and 3/4" knockouts.
- Thermal protector (per current NEC) provides automatic cut-off if rated temperature is exceeded.

Installation

- 27" galvanized hanger bars supplied (2).
- Fully adjustable universal galvanized mounting brackets supplied (2).
- Recesses indoor or outdoor in covered ceilings.

UL, C-UL (Canada) Listings

- Wet, damp or dry locations, covered ceilings.
- Through-branch conductors (6 #12 AWG 105°C)

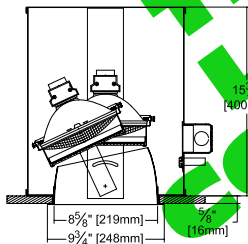
Three Year Limited Warranty

- Complete standard fixture

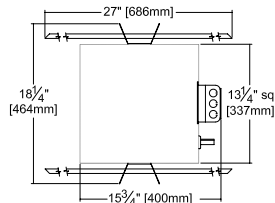
Recessed Round
Open Appearance
Adjustable

Performance at a Glance

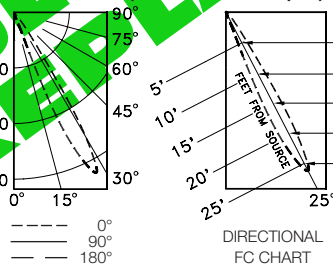
IRR-08100



Ceiling
Cut-out
9" Dia.

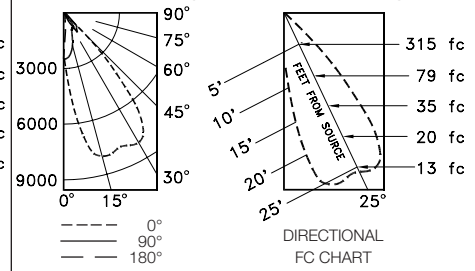


IRR-08100 (500W Narrow Spot)



EFFICIENCY: 71.2%
ITL TEST #43325

IRR-08100-15 (500W Medium Flood)



EFFICIENCY: 58.7%
ITL TEST #43323

"MARKED SPACINGS CAUTION"

INSTALL WITH MINIMUM SPACINGS AS FOLLOWS:
2 FEET BETWEEN CENTERS OF ADJACENT
FIXTURES; 1/2" BETWEEN FIXTURE TOP AND
OVERHEAD BUILDING MEMBER; 1 FOOT
BETWEEN FIXTURE CENTER AND SIDE WALL.



Exceptional
Energy
Efficiency

PHOTOMETRIC DATA SHOWN AT 25° TILT

THE KIRLIN COMPANY

3401 EAST JEFFERSON AVENUE • DETROIT, MICHIGAN 48207-4232
(313) 259-6400 • Fax: (313) 259-9409 OR (313) 259-3121 • www.kirlinlighting.com

TUNGSTEN HALOGEN &
INCANDESCENT LIGHTING

MAXIMUM WATTAGE

500

CATALOG NUMBER

IRR-08100

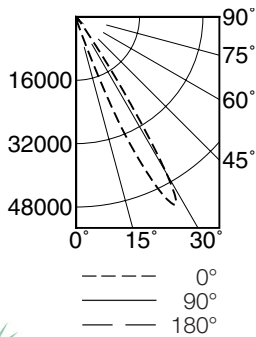
DUE TO OUR CONTINUING EFFORT TO IMPROVE PRODUCTS, TECHNICAL
INFORMATION IS SUBJECT TO CHANGE WITHOUT NOTICE.

Alzak® is a registered trademark of ALCOA.

Detailed Photometry - Installed Fixture

Photometry from I.T.L., Boulder, CO

IRR-08100 (500W Narrow Spot)



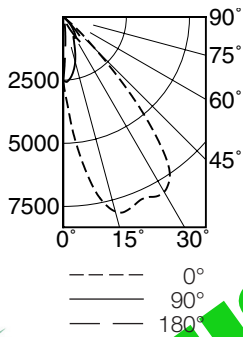
EFFICIENCY : 71.2%

	CANDLEPOWER DISTRIBUTION				
	0.0	45.0	90.0	135.0	180.0
0	1160	1160	1160	1160	1160
5	1228	1374	1239	1145	874
15	2061	1759	1051	802	21
25	45802	10212	958	156	416
35	5892	8182	52	677	562
45	83	52	21	52	62
55	21	21	10	21	19
65	0	4	0	10	11
75	0	0	0	0	0
85	0	0	0	0	0
90	0	0	0	0	0

RF	COEFFICIENTS OF UTILIZATION						
	20						
RC	80		50				
RW	70	50	30	10	50	30	10
1	80	78	76	75	74	72	71
2	76	72	69	66	69	66	64
3	71	66	62	59	63	60	58
4	67	61	57	53	59	55	52
5	63	56	52	48	54	50	47
6	59	52	47	44	50	46	43
7	55	48	43	40	46	42	39
8	52	44	39	36	42	39	36
9	49	41	36	33	40	36	33
10	46	38	33	30	37	33	30

ITL TEST #43325

IRR-08100-15 (500W Medium Flood)



EFFICIENCY : 58.7%

	CANDLEPOWER DISTRIBUTION				
	0.0	45.0	90.0	135.0	180.0
0	2515	2515	2515	2515	2515
5	4631	4384	3538	2508	1007
15	7971	6814	4352	1832	172
25	7876	5766	3072	998	142
35	7310	3963	1181	810	1260
45	1873	1146	362	354	523
55	108	114	71	72	73
65	4	8	11	15	22
75	0	0	1	2	0
85	0	0	0	0	0
90	0	0	0	0	0

RF	COEFFICIENTS OF UTILIZATION						
	20						
RC	80		50				
RW	70	50	30	10	50	30	10
1	66	65	63	62	61	60	59
2	63	59	57	55	56	55	53
3	59	55	51	49	52	50	48
4	55	50	47	44	48	46	43
5	52	47	43	40	45	42	39
6	49	43	39	36	42	38	36
7	46	40	36	33	39	35	33
8	44	37	33	30	36	33	30
9	41	35	31	28	34	30	28
10	39	32	29	26	32	28	26

ITL TEST #43323

Options

Lenses and Trims

- 15 Safety tempered prismatic C#73 flat glass for use with medium flood lamp. Converts oval beam pattern to round. See Option -LP.
- 16 Champagne Gold specular Alzak reflector. (CP x .98)
- 30 All white reflector. (CP x .98)
- 31 White flange (only) on self-flanged reflector.
- 32 White oversize trim ring. Specify O.D.

- 45 Gasket between ceiling and reflector flange.
- 63 Dune specular Alzak reflector. (CP x .97)
- 69 Wheat specular Alzak reflector. (CP x .97)
- 70 SofTex clear reflector. (CP x .98)
- 71 SofTex Dune reflector. (CP x .95)
- 72 Black specular Alzak reflector. (CP x .80)
- 91 SofTex Wheat reflector. (CP x .95)
- 93 Pewter specular Alzak reflector. (CP x .95)
- 94 Custom color/finish. Specify. Consult factory.

- OG OptiGroove black seamless tapered aluminum reflector. White trim, self-flanged. (CP x .82)

Other

- 99 Special modification. Consult factory.
- LP With PAR 56 lamp. Specify wattage and beam spread. With medium flood, also select -15.
- TA Top access for servicing from above.

SUBMITTAL DATA

APPROVAL STAMP

JOB NAME
TYPE
WATTAGE VOLTAGE
CATALOG NUMBER

LIMITED WARRANTY: CATALOGED KIRLIN FIXTURES ARE WARRANTED FREE OF DEFECTS IN WORKMANSHIP OR MATERIAL FOR THREE YEARS FROM DATE OF PURCHASE. INSTALL TO N.E.C. IN NORMAL USE. Manufacturer of the fixture will replace or repair such fixture or refund the purchase price on presentation of proof of purchase and defective fixture at the offices of manufacturer within three years of original shipment. Liability of manufacturer is limited to the foregoing and manufacturer shall not be liable for any other damages, direct or indirect, sustained or suffered by purchaser or any person. This warranty is subject to the buyer in place of all other warranties, expressed or implied. Seller does not warrant as to merchantability or fitness for a particular use, nor will any oral statement constitute a warranty or amend this specific warranty. Abnormal use, abuse of the fixture, improper installation, or repair or modification of the fixture without prior written authorization from the manufacturer will render the warranty void.