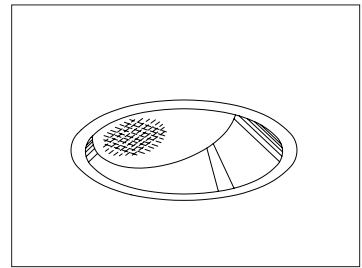


CATALOG #	TYPE	
JOB NAME	WATTAGE	VOLTAGE

7" 1 A21 150 WATT MAXIMUM

IRR-07134

Sleek Lensed Wall Wash with 6¼" Depth



Specifications

Lamp / Socket

- Designed for one offset frosted incandescent lamp (by others): 150W maximum A21.
- Dimmable (controls by others).
- Glazed porcelain medium base socket.

Trim Assembly

- Specular Alzak® aluminum upper reflector.
- Clear specular Alzak aluminum self-flanged lower reflector.
- C#73 tempered prismatic glass lens.
- Optional lower reflector finishes and colors available.

Aluminum Housing

- Cool. Acrylic enameled 100% aluminum.
- Rustproof and corrosion resistant: Exceeds 1000 hour ASTM 5% salt spray test.
- Dissipates heat across entire surface area extending component life.

- Entire luminaire visible and serviceable from below through aperture.
- Built-in plaster frame. Also see Option -79.

Outlet Box and Thermal Protection

- UL listed J-box with insulated removable cover. Prewired 14 GA (NEC) with ½" and ¾" knockouts.
- Thermal protector (per current NEC) provides automatic cut-off if rated temperature is exceeded.

Installation

- 27" galvanized hanger bars supplied (2).
- Fully adjustable universal galvanized mounting brackets supplied (2).
- Recesses indoor or outdoor in covered ceilings.

UL, C-UL (Canada) Listings

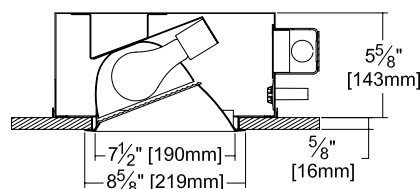
- Wet, damp or dry locations, covered ceilings.
- Through-branch conductors (6 #12 AWG 90°C).

Three Year Limited Warranty

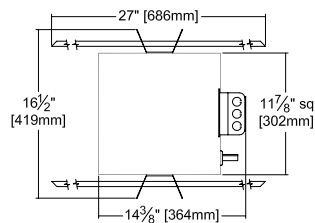
- Complete standard fixture.

Performance at a Glance

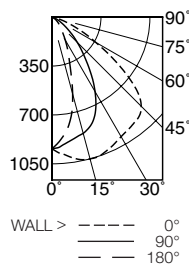
IRR-07134



Ceiling Cut-out
8" Dia.



IRR-07134 (150 Watt)



DISTANCE FROM CEILING IN FEET	SINGLE FIXTURE				MULTIPLE FIXTURES						
	1'	2'	3'	4'	3' CENTERS	4' CENTERS	3' CENTERS	4' CENTERS			
FIXTURE INSTALLED 3' FROM WALL											
Footcandle Distribution on Wall Surface											
1	10.0	7.3	4.0	2.5	1.9	17.9	15.9	17.9	15.5	11.4	15.5
2	30.8	23.4	11.4	5.0	2.7	44.0	40.0	44.0	38.1	26.4	38.1
3	33.3	29.4	18.1	8.6	4.1	54.2	56.5	54.2	43.7	40.4	43.7
4	22.0	20.9	16.5	10.4	5.4	47.4	48.6	47.4	35.4	38.1	35.4
5	14.6	13.9	12.2	9.4	5.9	38.8	38.1	38.8	29.0	30.2	29.0
6	10.2	9.7	8.8	7.5	5.5	31.0	30.4	31.0	24.1	23.9	24.1
7	7.5	7.1	6.6	5.9	4.7	25.2	25.0	25.5	20.0	19.7	20.0
8	5.8	5.6	5.2	4.7	4.0	21.2	21.1	21.2	17.1	16.8	17.1
9	4.7	4.6	4.3	4.0	3.6	18.5	18.6	18.5	15.1	15.1	15.1

EFFICIENCY: 66.0%

ITL TEST #46986



THE KIRLIN COMPANY

3401 EAST JEFFERSON AVENUE • DETROIT, MICHIGAN 48207-4232
(313) 259-6400 • Fax: (313) 259-9409 OR (313) 259-3121 • www.kirlinlighting.com

TUNGSTEN HALOGEN &
INCANDESCENT LIGHTING

MAXIMUM WATTAGE

150

CATALOG NUMBER

IRR-07134

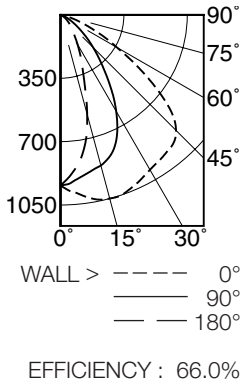
DUE TO OUR CONTINUING EFFORT TO IMPROVE PRODUCTS, TECHNICAL INFORMATION IS SUBJECT TO CHANGE WITHOUT NOTICE.

Alzak® is a registered trademark of ALCOA.

Detailed Photometry - Installed Fixture

Photometry from I.T.L., Boulder, CO

IRR-07134 (150 Watt)

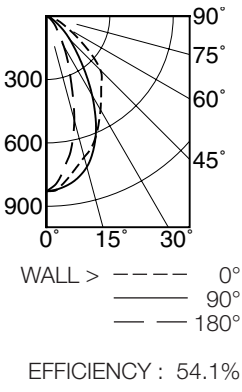


CANDLEPOWER DISTRIBUTION					
	0.0	45.0	90.0	135.0	180.0
0	942	942	942	942	942
5	986	967	917	874	862
15	1050	976	861	671	569
25	1018	968	737	387	269
35	969	948	478	200	129
45	902	740	255	93	70
55	561	371	114	48	32
65	220	133	43	12	0
75	51	31	7	1	0
85	3	3	3	1	0
90	0	0	0	0	0

COEFFICIENTS OF UTILIZATION							
RF	20						
RC	80			50			
RW	70	50	30	10	50	30	10
1	61	59	57	56	56	54	53
2	57	53	50	48	50	48	46
3	53	48	44	41	46	43	40
4	49	43	39	36	41	38	36
5	45	39	35	32	38	34	32
6	42	36	32	29	35	31	28
7	40	33	29	26	32	28	26
8	37	30	26	23	29	26	23
9	35	28	24	21	27	24	21
10	33	26	22	20	25	22	20

ITL TEST #46986

IRR-07134 (100 Watt)



CANDLEPOWER DISTRIBUTION					
	0.0	45.0	90.0	135.0	180.0
0	829	829	829	829	829
5	805	819	816	785	763
15	691	731	739	575	510
25	579	618	554	310	242
35	452	532	316	151	105
45	362	334	158	62	53
55	184	148	67	33	23
65	81	61	27	7	0
75	27	18	3	0	0
85	1	0	0	0	0
90	0	0	0	0	0

COEFFICIENTS OF UTILIZATION							
RF	20						
RC	80			50			
RW	70	50	30	10	50	30	10
1	61	59	57	56	55	54	53
2	57	54	51	49	51	49	47
3	53	49	46	43	47	44	42
4	50	45	41	38	43	40	38
5	47	41	37	34	39	36	34
6	44	38	34	31	37	33	31
7	41	35	31	29	34	31	28
8	39	33	29	26	32	28	26
9	37	30	27	24	30	26	24
10	35	29	25	23	28	25	22

ITL TEST #46987

Options

Wattage and Voltage

- 58 277/120 volt stepdown transformer for 277 volt line input, prewired into fixture; with 277 volt thermal protector.

Trims

- 16 Champagne Gold specular Alzak lower reflector. (CP x .95)
- 30 All white lower reflector. (CP x .95)

- 31 White flange (only) on self-flanged lower reflector.
- 32 White oversize trim ring. Specify O.D.
- 45 Gasket between ceiling and reflector flange.
- 63 Dune specular Alzak lower reflector. (CP x .93)
- 69 Wheat specular Alzak lower reflector. (CP x .93)
- 70 Softex Clear lower reflector. (CP x .92)
- 71 Softex Dune lower reflector. (CP x .89)
- 72 Black specular Alzak lower reflector. (CP x .77)

- 79 Extension collar for ceilings up to 2" thick.
- 91 Softex Wheat lower reflector. (CP x .88)
- 93 Pewter specular Alzak lower reflector. (CP x .88)
- 94 Custom color/finish. Specify. Consult factory.

Other

- 99 Special modification. Consult factory.

SUBMITTAL DATA

APPROVAL STAMP

JOB NAME
TYPE
WATTAGE VOLTAGE
CATALOG NUMBER

LIMITED WARRANTY: CATALOGED KIRLIN FIXTURES ARE WARRANTED FREE OF DEFECTS IN WORKMANSHIP OR MATERIAL FOR THREE YEARS FROM DATE OF PURCHASE. INSTALL TO N.E.C. IN NORMAL USE. Manufacturer of the option will replace or repair such fixture or refund the purchase price on presentation of proof of purchase and defective fixture at the office of manufacturer within three years of original shipment. Liability of manufacturer is limited to the foregoing and manufacturer shall not be liable for any other damages, direct or indirect, sustained or suffered by purchaser or any person. This warranty is supplied to the buyer in place of all other warranties, expressed or implied. Seller does not warrant as to merchantability or fitness for a particular use, nor will any oral statement constitute a warranty or amend this specific warranty. Abnormal use, abuse of the fixture, improper installation, or repair or modification of the fixture without prior written authorization from the manufacturer will render the warranty void.