

CATALOG #	TYPE	
JOB NAME	WATTAGE	VOLTAGE

7" 1 A23 200 WATT MAXIMUM

IRR-07130

Visual Comfort with High Efficiency

Specifications

Lamp / Socket

- Designed for one frosted incandescent lamp (by others):
Vertical 200W maximum A23.
- Dimmable (controls by others).
- Glazed porcelain medium base socket.

Reflector

- Self-flanged compound curved specular Alzak® aluminum.
- Optional reflector finishes and colors available.

Aluminum Housing

- Cool. Acrylic enameled 100% aluminum.
- Rustproof and corrosion resistant: Exceeds 1000 hour ASTM 5% salt spray test.
- Dissipates heat across entire surface area extending component life.
- Entire luminaire visible and serviceable from below through aperture.
- Built-in plaster frame. Also see Option -79.

Outlet Box and Thermal Protection

- UL listed J-box with insulated removable cover. Prewired 14 GA (NEC) with 1/2" and 3/4" knockouts.
- Thermal protector (per current NEC) provides automatic cut-off if rated temperature is exceeded.

Installation

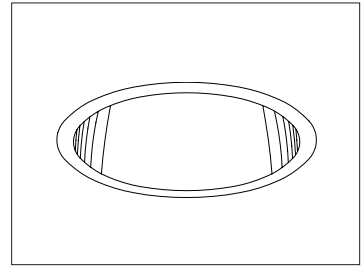
- 27" galvanized hanger bars supplied (2).
- Fully adjustable universal galvanized mounting brackets supplied (2).
- Recesses indoor or outdoor in covered ceilings.

UL, C-UL (Canada) Listings

- Wet, damp or dry locations, covered ceilings.
- Through-branch conductors (6 #12 AWG 90°C).

Three Year Limited Warranty

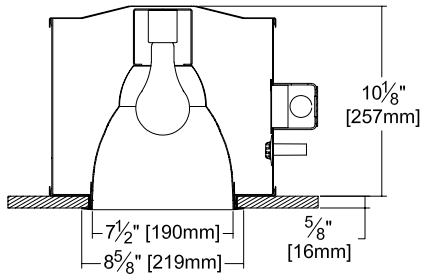
- Complete standard fixture.



Recessed Round
Open
Single Reflector

Performance at a Glance

IRR-07130



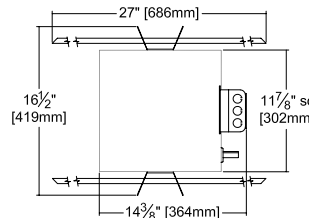
Cone of Light Key

- Ft. Distance from fixture
- FC Footcandles at nadir (0°)
- Dia. Circle of light at 50% of FC

* Dia. (in ft.) shown is where FC value is half the FC at nadir.

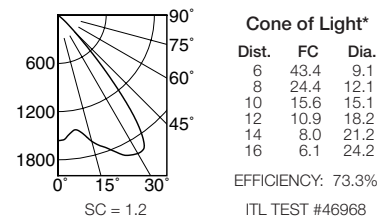


Exceptional
Energy
Efficiency

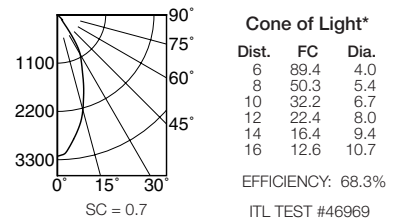


Ceiling Cut-out
8" Dia.

IRR-07130 (200 Watt)



IRR-07130 (150 Watt)



THE KIRLIN COMPANY

3401 EAST JEFFERSON AVENUE • DETROIT, MICHIGAN 48207-4232
(313) 259-6400 • Fax: (313) 259-9409 OR (313) 259-3121 • www.kirlinlighting.com

TUNGSTEN HALOGEN &
INCANDESCENT LIGHTING

MAXIMUM WATTAGE

200

CATALOG NUMBER

IRR-07130

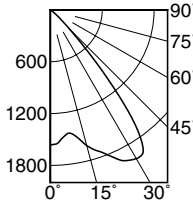
DUE TO OUR CONTINUING EFFORT TO IMPROVE PRODUCTS, TECHNICAL INFORMATION IS SUBJECT TO CHANGE WITHOUT NOTICE.

Alzak® is a registered trademark of ALCOA.

Detailed Photometry - Installed Fixture

Photometry from I.T.L., Boulder, CO

IRR-07130 (200 Watt)



SC = 1.2
EFFICIENCY: 73.3%

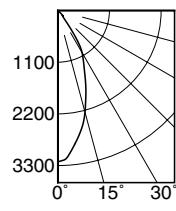


CANDLEPOWER DISTRIBUTION					
	0.0	22.5	45.0	67.5	90.0
0	1563	1563	1563	1563	1563
5	1497	1497	1497	1497	1497
15	1625	1625	1625	1625	1625
25	1919	1919	1919	1919	1919
35	1828	1828	1828	1828	1828
45	311	311	311	311	311
55	15	15	15	15	15
65	5	5	5	5	5
75	2	2	2	2	2
85	1	1	1	1	1
90	0	0	0	0	0

COEFFICIENTS OF UTILIZATION										
RF	20									
	80					50				
RC	70	50	30	10	50	30	10	50	30	10
1	83	80	78	77	76	74	73			
2	78	74	71	68	70	68	66			
3	73	68	64	61	65	62	59			
4	69	63	58	55	60	57	54			
5	65	58	53	50	56	52	49			
6	61	53	49	45	52	48	44			
7	57	49	44	41	48	44	41			
8	54	46	41	37	45	40	37			
9	51	43	38	34	41	37	34			
10	48	40	35	32	39	34	31			

ITL TEST #46968

IRR-07130 (150 Watt)



SC = 0.7
EFFICIENCY: 68.3%

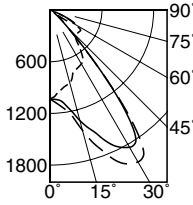


CANDLEPOWER DISTRIBUTION					
	0.0	22.5	45.0	67.5	90.0
0	3220	3220	3220	3220	3220
5	3037	3037	3037	3037	3037
15	2240	2240	2240	2240	2240
25	1327	1327	1327	1327	1327
35	524	524	524	524	524
45	156	156	156	156	156
55	4	4	4	4	4
65	2	2	2	2	2
75	0	0	0	0	0
85	0	0	0	0	0
90	0	0	0	0	0

COEFFICIENTS OF UTILIZATION										
RF	20									
	80					50				
RC	70	50	30	10	50	30	10	50	30	10
1	78	76	74	73	72	71	70			
2	74	71	69	66	68	66	64			
3	71	67	64	61	64	62	60			
4	68	63	59	57	61	58	56			
5	65	59	55	53	57	54	52			
6	62	56	52	49	54	51	49			
7	59	53	49	46	52	48	46			
8	56	50	46	44	49	46	43			
9	54	48	44	41	47	43	41			
10	52	45	42	39	45	41	39			

ITL TEST #46969

IRR-07130-WW (200 Watt)



WALL > --- 0°
----- 90°
----- 180°

EFFICIENCY: 66.5%



CANDLEPOWER DISTRIBUTION					
	0.0	45.0	90.0	135.0	180.0
0	1032	1032	1032	1032	1032
5	967	984	1047	1084	1101
15	877	1002	1329	1436	1446
25	745	955	1733	1922	1959
35	649	791	1678	1786	1803
45	415	369	295	321	307
55	424	314	58	101	121
65	181	145	46	169	207
75	13	12	8	11	11
85	2	0	0	0	0
90	0	0	0	0	0

DISTANCE FROM CEILING IN FEET	SINGLE FIXTURE					MULTIPLE FIXTURES						
	1'	2'	3'	4'	3' CENTERS	4' CENTERS		4' CENTERS		4' CENTERS		
	FIXTURE INSTALLED 3" FROM WALL											
Footcandle Distribution on Wall Surface												
1	4.9	4.3	3.0	2.4	2.1	14.2	14.0	14.2	12.3	11.3	12.3	
2	26.1	23.3	13.0	5.9	2.8	42.4	43.8	42.4	34.9	31.3	34.9	
3	16.6	15.5	11.6	7.9	4.5	37.4	37.4	37.4	29.0	29.0	29.0	
4	14.7	13.3	9.7	6.5	4.3	33.3	33.0	33.3	26.8	25.6	26.8	
5	11.6	11.4	9.9	6.6	4.4	30.4	32.3	30.4	24.1	26.3	24.1	
6	8.5	8.4	8.4	7.0	5.4	28.7	28.8	28.7	23.1	23.6	23.1	
7	6.5	6.5	6.6	6.3	6.0	26.1	27.3	26.1	22.4	20.9	22.4	
8	5.3	5.3	5.4	5.3	5.5	24.4	25.2	24.4	20.4	19.9	20.4	
9	4.7	4.6	4.6	4.6	4.8	23.4	23.6	23.4	18.8	19.5	18.8	

ITL TEST #46984

Options

Wattage and Voltage

- 58 277/120 volt stepdown transformer for 277 volt line input, prewired into fixture; with 277 volt thermal protector.

Trims

- 16 Champagne Gold specular Alzak reflector. (CP x .93)
- 31 White flange (only) on self-flanged reflector.
- 32 White oversize trim ring. Specify O.D.

- 33 Decorative tempered glass Glow Ring suspended trim assembly.
- 45 Gasket between ceiling and reflector flange.
- 63 Dune specular Alzak reflector. (CP x .90)
- 69 Wheat specular Alzak reflector. (CP x .88)
- 70 SoftTex clear reflector. (CP x .90)
- 71 SoftTex Dune reflector. (CP x .81)
- 79 Extension collar for ceilings up to 2" thick.
- 91 SoftTex Wheat reflector. (CP x .80)

- 93 Pewter specular Alzak reflector. (CP x .85)
- 94 Custom color/finish. Specify. Consult factory.
- OG OptiGroove black seamless tapered aluminum reflector. White trim, self-flanged. (CP x .75)
- WW Wall wash version instead.

Other

- 99 Special modification. Consult factory.

SUBMITTAL DATA

APPROVAL STAMP

JOB NAME _____
TYPE _____
WATTAGE _____ VOLTAGE _____
CATALOG NUMBER _____

LIMITED WARRANTY: CATALOGED KIRLIN FIXTURES ARE WARRANTED FREE OF DEFECTS IN WORKMANSHIP OR MATERIAL FOR THREE YEARS FROM DATE OF PURCHASE. INSTALL TO N.E.C. IN NORMAL USE. Manufacturer of the fixture will replace or repair such fixture or refund the purchase price on presentation of proof of purchase and defective fixture at the office of manufacturer within three years of original shipment. Liability of manufacturer is limited to the foregoing and manufacturer shall not be liable for any other damages, direct or indirect, sustained or suffered by purchaser or any person. This warranty is supplied to the buyer in place of all other warranties, expressed or implied. Seller does not warrant as to merchantability or fitness for a particular use, nor will any oral statement constitute a warranty or amend the specific warranty. Abuse of the fixture, improper installation, or repair or modification of the fixture without prior written authorization from the manufacturer will render the warranty void.