

CATALOG #	TYPE	
JOB NAME	WATTAGE	VOLTAGE

7" 1 T4 500 WATT MAXIMUM

IRR-07063

Ideal for Sloped Ceilings: Auditoriums

Specifications

Lamp

- Designed for 1 vertical T4 frosted tungsten halogen lamp (by others): Mini-can 500 watt maximum.

Lampholder

- Mini-candelabra heat resistant screw base mounted in exclusive extruded aluminum heat sink to maximize dissipation of lamp base heat.

Reflectors

- Upper: Specular Alzak® aluminum for precise control of source. Locking yoke for slope adjustment up to 35° maximum tilt.
- Lower: Low brightness clear specular parabolic Alzak aluminum cone, self-flanged.
- Optional self-flanged lower cone finishes and colors available.
- Convection and radiation cooling by design.

Lens

- Tempered MicroLux (microprismatic) lens mounted to upper reflector (0.4° SC). Optional tempered C#73 prismatic glass (Option -15 with 0.7° SC) or tempered clear glass (Option -28 with 0.2° SC) available.

Aluminum Housing

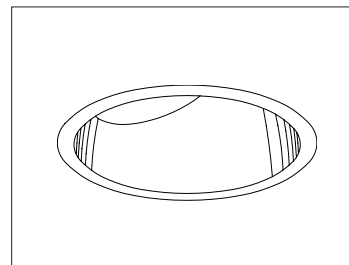
- Cool. Acrylic enameled 100% aluminum.
- Rustproof and corrosion resistant: Exceeds 1000 hour ASTM 5% salt spray test.
- Dissipates heat across entire surface area extending component life.
- Entire luminaire visible and serviceable from below through aperture.
- Top access standard - simple procedure.

Outlet Box and Thermal Protection

- UL listed J-box with insulated removable cover. Prewired 14 GA (NEC) with 1/2" and 3/4" knockouts.
- Thermal protector (per current NEC) provides automatic cut-off if rated temperature is exceeded.

Installation

- 27" galvanized hanger bars supplied (2).
- Fully adjustable universal galvanized mounting brackets supplied (2).
- Recesses indoor or outdoor in covered ceilings. 2" collar (standard) permits thicker ceiling installations.
- See "MARKED SPACINGS CAUTION" below.



Recessed Round
Open
Appearance
Adjustable

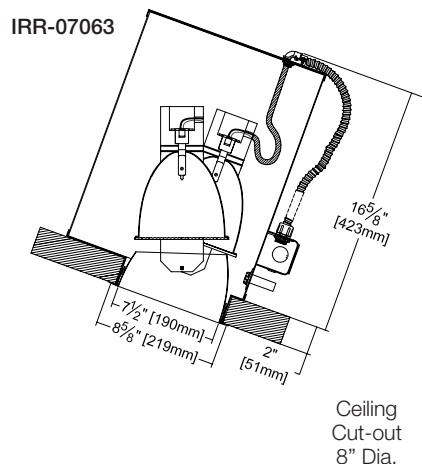
UL, C-UL (Canada) Listings

- Wet, damp or dry locations, covered ceilings.
- Through-branch conductors (6 #12 AWG 105°C).

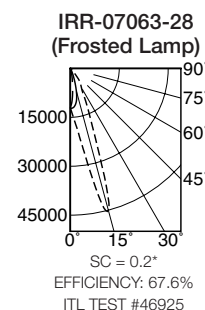
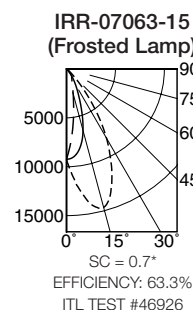
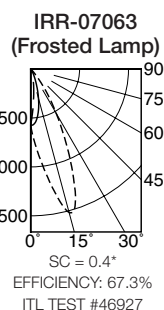
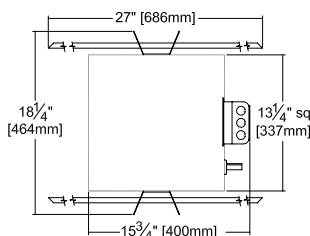
Three Year Limited Warranty

- Complete standard fixture.

Performance at a Glance



Exceptional
Energy
Efficiency



--- 0°
--- 90°
--- 180°

"MARKED SPACINGS CAUTION"
INSTALL WITH MINIMUM SPACINGS AS FOLLOWS: 2 FEET BETWEEN CENTERS OF ADJACENT FIXTURES; 1/2" BETWEEN FIXTURE TOP AND OVERHEAD BUILDING MEMBER; 1 FOOT BETWEEN FIXTURE CENTER AND SIDE WALL.

CAUTION: SINGLE ENDED T4 HALOGEN LAMPS MUST BE STARTED AT OR NEAR FULL VOLTAGE (120V) BEFORE DIMMING TO ENSURE MAXIMUM LIFE AND PERFORMANCE.

KIRLIN RECOMMENDS FROSTED T4 HALOGEN LAMPS BY USHIO, GE OR SYLVANIA ONLY

*ALL SC VALUES SHOWN ARE FOR 15° SLOPE, MEASURED FROM NADIR. SECTION VIEW DRAWING AND ALL PHOTOMETRIC CURVES SHOWN ARE FOR 15° SLOPE.

THE KIRLIN COMPANY

3401 EAST JEFFERSON AVENUE • DETROIT, MICHIGAN 48207-4232
(313) 259-6400 • Fax: (313) 259-9409 OR (313) 259-3121 • www.kirlinlighting.com

TUNGSTEN HALOGEN & INCANDESCENT LIGHTING

MAXIMUM WATTAGE

500

CATALOG NUMBER

IRR-07063

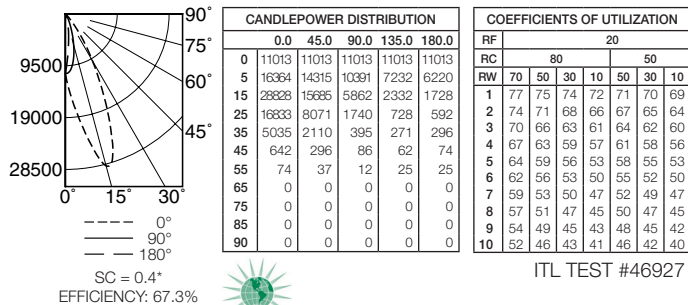
DUE TO OUR CONTINUING EFFORT TO IMPROVE PRODUCTS, TECHNICAL INFORMATION IS SUBJECT TO CHANGE WITHOUT NOTICE.

Alzak® is a registered trademark of ALCOA.

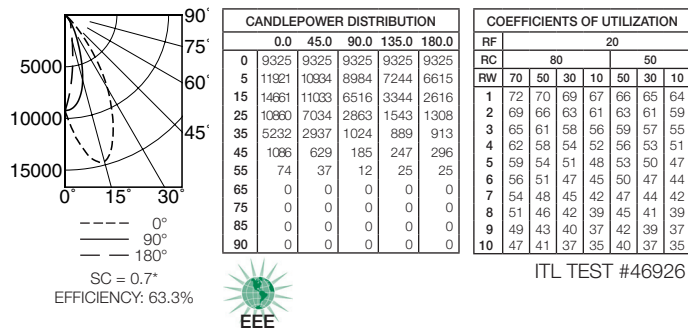
Detailed Photometry - Installed Fixture

Photometry from I.T.L., Boulder, CO

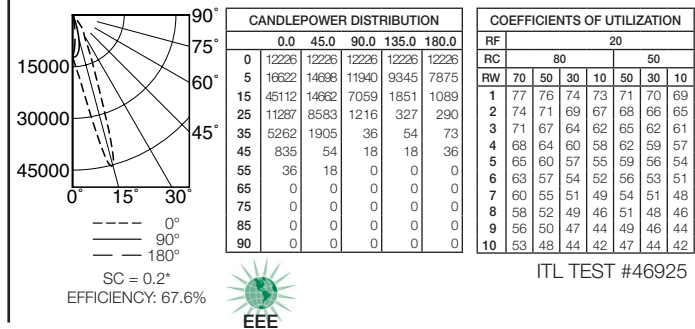
IRR-07063 (500 Watt)



IRR-07063-15 (500 Watt)



IRR-07063-28 (500 Watt)



* ALL SC VALUES SHOWN ARE FOR 15° SLOPE, MEASURED FROM NADIR. ALL PHOTOMETRIC CURVES SHOWN ARE FOR 15° SLOPE.

Options

Lenses and Trims

- 15 Tempered prismatic C#73 glass lens for medium distribution (0.7 SC at 0° tilt).
- 16 Champagne Gold specular Alzak lower cone. (CP x .95)
- 28 Tempered clear flat glass for narrowest distribution (0.2 SC at 0° tilt).
- 30 All white lower cone. (CP x .95)
- 31 White flange (only) on self-flanged lower cone.

- 32 White oversize trim ring. Specify O.D.
- 45 Gasket between ceiling and lower cone flange.
- 63 Dune specular Alzak lower cone. (CP x .93)
- 69 Wheat specular Alzak lower cone. (CP x .92)
- 70 SoftTex clear lower cone. (CP x .92)
- 71 SoftTex Dune lower cone. (CP x .89)
- 72 Black specular Alzak lower cone. Fire resistant construction only. (CP x .80)
- 91 SoftTex Wheat lower cone. (CP x .88)
- 93 Pewter specular Alzak lower cone. (CP x .88)

- 94 Custom color/finish. Specify. Consult factory.
- OG OptiGroove black seamless tapered aluminum lower cone. Fire resistant construction only. White trim, self-flanged. (CP x .83)

Other

- 99 Special modification. Consult factory.
- LP With lamp. Specify wattage, clear or frosted, 500W mini-can or 250W DCB, and color temperature.

SUBMITTAL DATA

JOB NAME

TYPE

WATTAGE

VOLTAGE

CATALOG NUMBER

APPROVAL STAMP