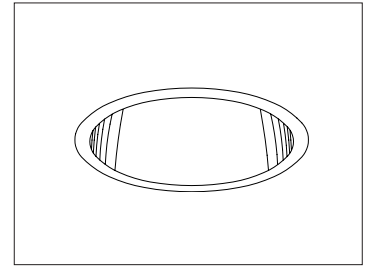


CATALOG #	TYPE	
JOB NAME	WATTAGE	VOLTAGE

6" 1 PAR 38 250 WATT MAXIMUM

IRR-06083

## Exceptional Visual Comfort Designer Series



Recessed Round  
Open  
Single Reflector

### Specifications

#### Lamp / Socket

- Designed for 1 vertical tungsten halogen lamp (by others): 250W maximum PAR 38.
- Rated 4200 hour life. 100 CRI.
- Dimmable (controls by others).
- Glazed porcelain medium base socket.

#### Reflector

- Self-flanged parabolic specular Alzak® aluminum.
- Optional reflector finishes and colors available.

#### Aluminum Housing

- Cool. Acrylic enameled 100% aluminum.
- Rustproof and corrosion resistant: Exceeds 1000 hour ASTM 5% salt spray test.
- Dissipates heat across entire surface area extending component life.
- Entire luminaire visible and serviceable from below through aperture.

- For top access, see Option -TA.
- Built-in plaster frame. Also see Option -79.

#### Outlet Box and Thermal Protection

- UL listed J-box with insulated removable cover. Prewired 14 GA (NEC) with 1/2" and 3/4" knockouts.
- Thermal protector (per current NEC) provides automatic cut-off if rated temperature is exceeded.

#### Installation

- 27" galvanized hanger bars supplied (2).
- Fully adjustable universal galvanized mounting brackets supplied (2).
- Recesses indoor or outdoor: in covered ceilings.

#### UL, C-UL (Canada) Listings

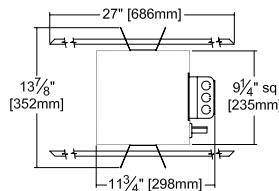
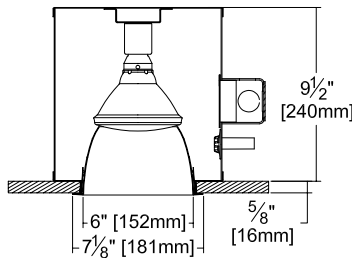
- Wet, damp or dry locations, covered ceilings.
- Through-branch conductors (6 #12 AWG 90°C).

#### Three Year Limited Warranty

- Complete standard fixture.

### Performance at a Glance

IRR-06083



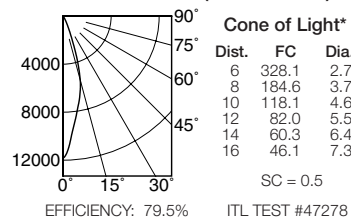
Ceiling Cut-out  
6 1/2" Dia.

#### Cone of Light Key

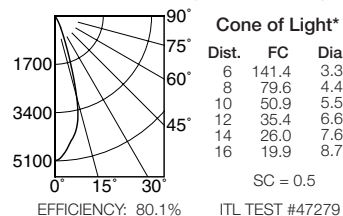
- Ft. Distance from fixture
- FC Footcandles at nadir (0°)
- Dia. Circle of light at 50% of FC

\* Dia. (in ft.) shown is where FC value is half the FC at nadir.

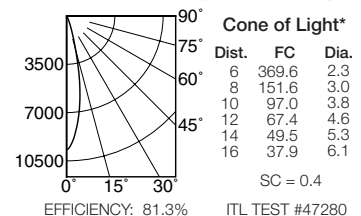
IRR-06083 (250W Flood)



IRR-06083 (120W Flood)



IRR-06083 (100W Flood)



## THE KIRLIN COMPANY

3401 EAST JEFFERSON AVENUE • DETROIT, MICHIGAN 48207-4232  
(313) 259-6400 • Fax: (313) 259-9409 OR (313) 259-3121 • www.kirlinlighting.com

TUNGSTEN HALOGEN &  
INCANDESCENT LIGHTING

MAXIMUM WATTAGE

250

CATALOG NUMBER

IRR-06083

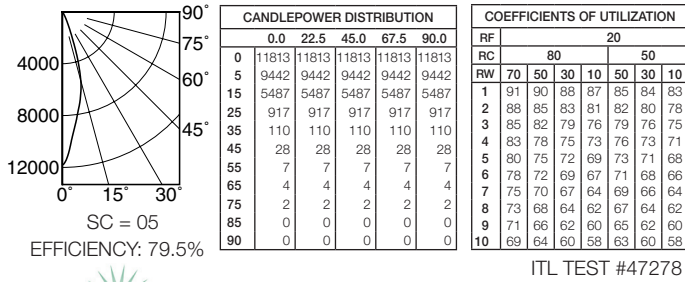
DUE TO OUR CONTINUING EFFORT TO IMPROVE PRODUCTS, TECHNICAL INFORMATION IS SUBJECT TO CHANGE WITHOUT NOTICE.

Alzak® is a registered trademark of ALCOA.

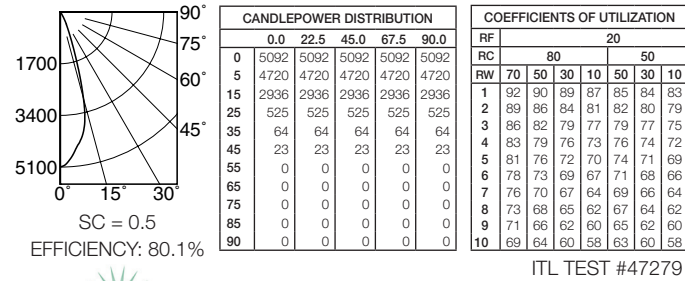
Detailed Photometry - Installed Fixture

Photometry from I.T.L., Boulder, CO

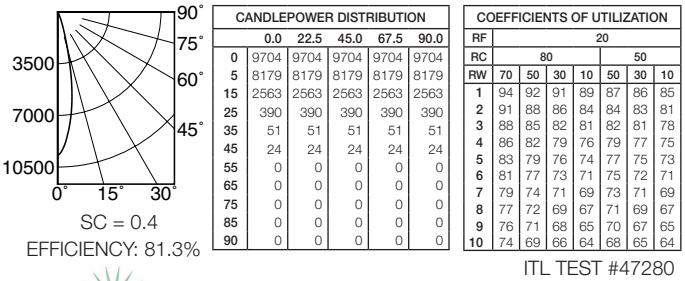
**IRR-06083 (250 Watt Flood)**



**IRR-06083 (120 Watt Flood)**



**IRR-06083 (100 Watt Flood)**



**Options**

**Wattage and Voltage**

- 58 277/120 volt stepdown transformer for 277 volt line input, prewired into fixture; with 277 volt thermal protector.

**Trims**

- 16 Champagne Gold specular Alzak reflector. (CP x .98)
- 30 All white reflector. (CP x .98)
- 31 White flange (only) on self-flanged reflector.
- 32 White oversize trim ring. Specify O.D.
- 45 Gasket between ceiling and reflector flange.

- 63 Dune specular Alzak reflector. (CP x .97)
- 69 Wheat specular Alzak reflector. (CP x .97)
- 70 Softex clear reflector. (CP x .98)
- 71 Softex Dune reflector. (CP x .95)
- 72 Black specular Alzak reflector. (CP x .80)
- 79 Extension collar for ceilings up to 2" thick.
- 91 Softex Wheat reflector. (CP x .95)
- 93 Pewter specular Alzak reflector. (CP x .95)
- 94 Custom color/finish. Specify. Consult factory.
- OG OptiGroove black seamless tapered aluminum reflector. White trim, self-flanged. (CP x .82)

**Other**

- 99 Special modification. Consult factory.
- LP With PAR 38 lamp. Specify wattage and beam spread.
- TA Top access for servicing from above.

**SUBMITTAL DATA**

JOB NAME \_\_\_\_\_  
 TYPE \_\_\_\_\_  
 WATTAGE \_\_\_\_\_ VOLTAGE \_\_\_\_\_  
 CATALOG NUMBER \_\_\_\_\_

**APPROVAL STAMP**

LIMITED WARRANTY: CATALOGED KIRLIN FIXTURES ARE WARRANTED FREE OF DEFECTS IN WORKMANSHIP OR MATERIAL FOR THREE YEARS FROM DATE OF PURCHASE. INSTALL TO N.E.C. IN NORMAL USE. Manufacturer of the fixture will replace or repair such fixture or refund the purchase price on presentation of proof of purchase and defective fixture at the offices of manufacturer within three years of original shipment. Liability of manufacturer is limited to the foregoing and manufacturer shall not be liable for any other damages, direct or indirect, sustained or suffered by purchaser or any person. This warranty is supplied to the buyer in place of all other warranties, expressed or implied. Seller does not warrant as to merchantability or fitness for a particular use, nor will any oral statement constitute a warranty or amend this specific warranty. Abnormal use, improper installation, or repair or modification of the fixture without prior written authorization from the manufacturer will render the warranty void.