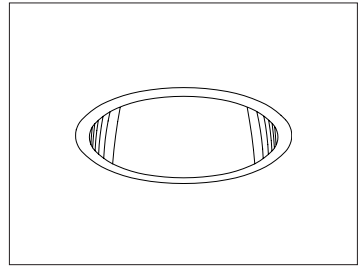


CATALOG #	TYPE	
JOB NAME	WATTAGE	VOLTAGE

6" 1 PAR 30 75 WATT MAXIMUM

Type IC - IRR-06081

Type IC and Efficient 6" Downlight



Specifications

Lamp / Socket

- Designed for 1 vertical tungsten halogen lamp (by others):
75W maximum PAR 30.
- Rated 2000-2500 hour life. 100 CRI.
- Dimmable (controls by others).
- Glazed porcelain medium base socket.

Reflector

- Self-flanged parabolic specular Alzak® aluminum.
- Optional reflector finishes, colors and square trim available.

Aluminum Housing

- Cool. Acrylic enameled 100% aluminum.
- Rustproof and corrosion resistant: Exceeds 1000 hour ASTM 5% salt spray test.
- Dissipates heat across entire surface area extending component life.
- Entire luminaire visible and serviceable from below through aperture.

- Built-in plaster frame. Also see Option -79.

Outlet Box and Thermal Protection

- UL listed J-box with insulated removable cover. Prewired 14 GA (NEC) with 1/2" and 3/4" knockouts.
- Thermal protector (per current NEC) provides automatic cut-off if rated wattage is exceeded.

Installation

- 27" galvanized hanger bars supplied (2).
- Fully adjustable universal galvanized mounting brackets supplied (2).
- Recesses indoor or outdoor in covered ceilings.

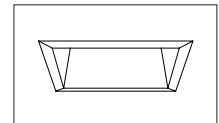
UL, C-UL (Canada) Listings

- Damp or dry locations, covered ceilings.
- Through-branch conductors (6 #12 AWG 90°C).
- Type IC. Approved for direct contact with insulation.

Three Year Limited Warranty

- Complete standard fixture.

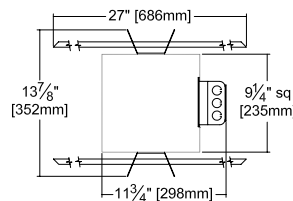
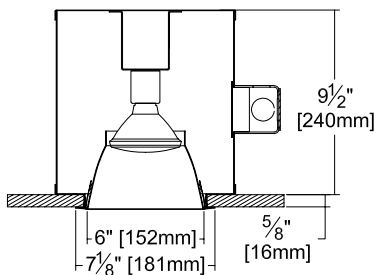
Recessed Round
Open
Single Reflector
Type IC



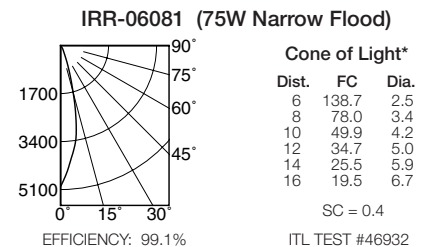
Square Reflector
Option -SQ

Performance at a Glance

IRR-06081: Type IC



Ceiling Cut-out
6 1/2" Dia.



Cone of Light Key
Ft. Distance from fixture
FC Footcandles at nadir (0°)
Dia. Circle of light at 50% of FC

* Dia. (in ft.) shown is where FC value is half the FC at nadir.



Exceptional
Energy
Efficiency

THE KIRLIN COMPANY

3401 EAST JEFFERSON AVENUE • DETROIT, MICHIGAN 48207-4232
(313) 259-6400 • Fax: (313) 259-9409 OR (313) 259-3121 • www.kirlinlighting.com

TUNGSTEN HALOGEN & INCANDESCENT LIGHTING

MAXIMUM WATTAGE

75

CATALOG NUMBER

IRR-06081

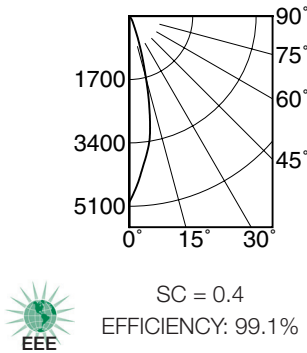
DUE TO OUR CONTINUING EFFORT TO IMPROVE PRODUCTS, TECHNICAL INFORMATION IS SUBJECT TO CHANGE WITHOUT NOTICE.

Alzak® is a registered trademark of ALCOA.

Detailed Photometry - Installed Fixture

Photometry from I.T.L., Boulder, CO

IRR-06081 (75W Narrow Flood)



CANDLEPOWER DISTRIBUTION					
	0.0	22.5	45.0	67.5	90.0
0	4992	4992	4992	4992	4992
5	4083	4083	4083	4083	4083
15	1727	1727	1727	1727	1727
25	309	309	309	309	309
35	99	99	99	99	99
45	16	16	16	16	16
55	1	1	1	1	1
65	0	0	0	0	0
75	0	0	0	0	0
85	0	0	0	0	0
90	0	0	0	0	0

COEFFICIENTS OF UTILIZATION							
RF	20						
RC	80				50		
RW	70	50	30	10	50	30	10
1	114	112	110	108	106	104	103
2	110	107	104	101	102	100	98
3	107	102	98	95	98	95	93
4	103	98	94	91	95	92	89
5	100	94	90	87	92	88	86
6	97	91	87	84	89	85	83
7	94	88	84	81	86	83	80
8	92	85	81	78	84	80	77
9	89	82	78	75	81	78	75
10	87	80	76	73	79	75	73

ITL TEST #46932

Options

Trims

- 16 Champagne Gold specular Alzak reflector. (CP x .98)
- 30 All white reflector. (CP x .98)
- 31 White flange (only) on self-flanged reflector.
- 32 White oversize trim ring. Specify O.D.
- 45 Gasket between ceiling and reflector flange.
- 63 Dune specular Alzak reflector. (CP x .97)
- 69 Wheat specular Alzak reflector. (CP x .97)
- 70 SofTex clear reflector. (CP x .98)
- 71 SofTex Dune reflector. (CP x .95)

- 72 Black specular Alzak reflector. (CP x .87)
- 79 Extension collar for ceilings up to 2" thick.
- 91 SofTex Wheat reflector. (CP x .95)
- 93 Pewter specular Alzak reflector. (CP x .95)
- 94 Custom color/finish. Specify. Consult factory.
- OG OptiGroove black seamless tapered aluminum reflector. White trim, self-flanged. (CP x .90)
- SQ 6" Square self-flanged clear specular reflector instead. (Ceiling cut-out 6.75" sq.)

Other

- 99 Special modification. Consult factory.
- LP With PAR 30 lamp. Specify wattage and beam spread.

SUBMITTAL DATA

JOB NAME

TYPE

WATTAGE

VOLTAGE

CATALOG NUMBER

APPROVAL STAMP