

CATALOG #	TYPE
JOB NAME	WATTAGE VOLTAGE

6" 1 T4 250 WATT MAXIMUM

IRR-06055

Church, Retail, Office Quartz T4 Halogen

Specifications

Lamp

- Designed for 1 vertical T4 clear tungsten halogen lamp (by others): 250 watt maximum.

Lampholder

- Double contact bayonet. Heat resistant.
- Lamp socket bracket designed as heat sink.

Reflectors

- Upper: Specular Alzak® aluminum for precise control of source.
- Lower: Low brightness clear specular parabolic Alzak aluminum cone, self-flanged.
- Optional lower cone finishes, color and 6" square trim available.
- Convection and radiation cooling by design.

Lens

- Tempered prismatic glass lens mounted to upper reflector (1.0 SC).

Aluminum Housing

- Cool. Acrylic enameled 100% aluminum.
- Rustproof and corrosion resistant: Exceeds 1000 hour ASTM 5% salt spray test.

- Dissipates heat across entire surface area extending component life.
- Entire luminaire visible and serviceable from below through aperture.
- For top access, see Option -TA.
- Built-in plaster frame. Also see Option -79.

Outlet Box and Thermal Protection

- UL listed J-box with insulated removable cover. Rewired 14 GA (NEC) with 1/2" and 3/4" knockouts.
- Thermal protector (per current NEC) provides automatic cut-off if rated temperature is exceeded.

Installation

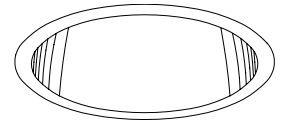
- 27" galvanized hanger bars supplied (2).
- Fully adjustable universal galvanized mounting brackets supplied (2).
- Recesses indoor or outdoor in covered ceilings.

UL, C-UL (Canada) Listings

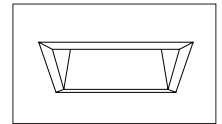
- Wet, damp or dry locations, covered ceilings.
- Through-branch conductors (6 #12 AWG 90°C).

Three Year Limited Warranty

- Complete standard fixture.



Recessed Round
Open
Appearance
Dual Reflector

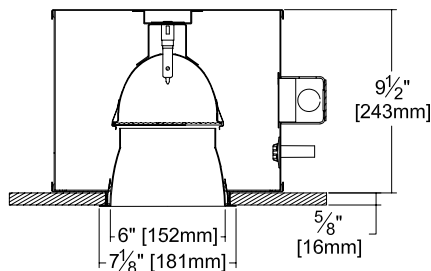


Square Reflector
Option -SQ

KIRLIN RECOMMENDS T4 HALOGEN LAMPS BY USHIO, GE OR SYLVANIA ONLY

Performance at a Glance

IRR-06055



Cone of Light Key

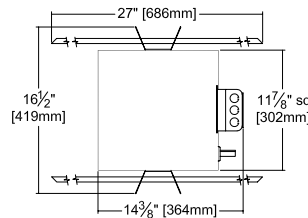
- Ft. Distance from fixture
FC Footcandles at nadir (0°)
Dia. Circle of light at 50% of FC

* Dia. (in ft.) shown is where FC value is half the FC at nadir.

CAUTION: SINGLE ENDED T4 HALOGEN LAMPS MUST BE STARTED AT OR NEAR FULL VOLTAGE (120V) BEFORE DIMMING TO ENSURE MAXIMUM LIFE AND PERFORMANCE.

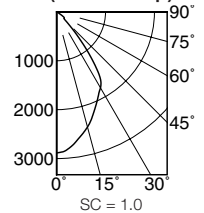


Exceptional
Energy
Efficiency



Ceiling Cut-out
6 1/2" Dia.

IRR-06055
(Clear Lamp)



SC = 1.0
EFFICIENCY: 64.5%
ITL TEST #47083

Cone of Light*

Dist.	FC	Dia.
6	80.1	5.7
8	45.1	7.6
10	28.9	9.5
12	20.0	11.4
14	14.7	13.3
16	11.3	15.2

THE KIRLIN COMPANY

3401 EAST JEFFERSON AVENUE • DETROIT, MICHIGAN 48207-4232
(313) 259-6400 • Fax: (313) 259-9409 OR (313) 259-3121 • www.kirlinlighting.com

TUNGSTEN HALOGEN & INCANDESCENT LIGHTING

MAXIMUM WATTAGE

250

CATALOG NUMBER

IRR-06055

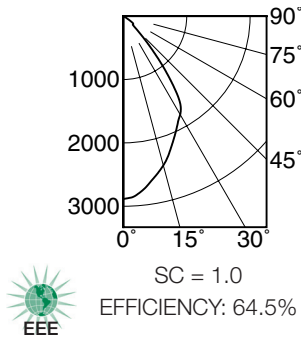
DUE TO OUR CONTINUING EFFORT TO IMPROVE PRODUCTS, TECHNICAL INFORMATION IS SUBJECT TO CHANGE WITHOUT NOTICE.

Alzak® is a registered trademark of ALCOA.

Detailed Photometry - Installed Fixture

Photometry from I.T.L., Boulder, CO

IRR-06055 (250 Watt)



CANDLEPOWER DISTRIBUTION					
	0.0	22.5	45.0	67.5	90.0
0	2885	2885	2885	2885	2885
5	2806	2806	2806	2806	2806
15	2438	2438	2438	2438	2438
25	1977	1977	1977	1977	1977
35	1441	1441	1441	1441	1441
45	303	303	303	303	303
55	155	155	155	155	155
65	5	5	5	5	5
75	3	3	3	3	3
85	2	2	2	2	2
90	0	0	0	0	0

COEFFICIENTS OF UTILIZATION							
RF	20						
RC	80				50		
RW	70	50	30	10	50	30	10
1	73	71	69	68	67	66	65
2	69	65	63	60	62	60	58
3	65	61	57	54	58	55	53
4	61	56	52	49	54	51	48
5	58	52	48	45	50	47	44
6	55	48	44	41	47	43	41
7	52	45	41	38	44	40	38
8	49	42	38	35	41	37	35
9	46	39	35	33	39	35	32
10	44	37	33	30	36	33	30

ITL TEST #47083

Options

Wattage and Voltage

- 58 277/120 volt stepdown transformer for 277 volt line input, prewired into fixture; with 277 volt thermal protector.

Lenses and Trims

- 16 Champagne Gold specular Alzak lower cone. (CP x .95)
- 30 All white lower cone. (CP x .95)
- 31 White flange (only) on self-flanged lower cone.
- 32 White oversize trim ring. Specify O.D.
- 45 Gasket between ceiling and lower cone flange.

- 63 Dune specular Alzak lower cone. (CP x .93)
- 69 Wheat specular Alzak lower cone. (CP x .92)
- 70 Softex clear lower cone. (CP x .92)
- 71 Softex Dune lower cone. (CP x .89)
- 72 Black specular Alzak lower cone. (CP x .80)
- 79 Extension collar for ceilings up to 2" thick.
- 91 Softex Wheat lower cone. (CP x .88)
- 93 Pewter specular Alzak lower cone. (CP x .88)
- 94 Custom color/finish. Specify. Consult factory.
- OG OptiGroove black seamless tapered aluminum lower cone. White trim, self-flanged. (CP x .83)

- SQ 6" Square self-flanged clear specular lower cone instead. Softex and colors optional. (Ceiling cut-out 6.75" sq.)

Other

- 99 Special modification. Consult factory.
- LP With clear DCB lamp. Specify wattage.
- TA Top access; for servicing from above ceiling.

SUBMITTAL DATA

JOB NAME

TYPE

WATTAGE

VOLTAGE

CATALOG NUMBER

APPROVAL STAMP