

CATALOG #	TYPE
JOB NAME	WATTAGE VOLTAGE

4" 1 PAR 30 75 WATT MAXIMUM

Type IC - IRR-04078

Type IC Mini-PAR 4" Aperture Downlight



Specifications

Lamp / Socket

- Designed for 1 vertical tungsten halogen lamp (by others):
75W maximum PAR 30.
- Rated 2000-2500 hour life. 100 CRI.
- Dimmable (controls by others).
- Glazed porcelain medium base socket.

Reflector

- Self-flanged parabolic specular Alzak® aluminum.
- Optional reflector finishes, colors and square trim available.

Aluminum Housing

- Cool. Acrylic enameled 100% aluminum.
- Rustproof and corrosion resistant: Exceeds 1000 hour ASTM 5% salt spray test.
- Dissipates heat across entire surface area extending component life.
- Entire luminaire visible and serviceable from below through aperture.

- Built-in plaster frame. Also see Option -79.

Outlet Box and Thermal Protection

- UL listed J-box with insulated removable cover. Prewired 14 GA (NEC) with 1/2" and 3/4" knockouts.
- Thermal protector (per current NEC) provides automatic cut-off if rated wattage is exceeded.

Installation

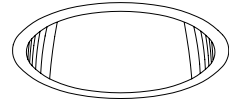
- 27" galvanized hanger bars supplied (2).
- Fully adjustable universal galvanized mounting brackets supplied (2).
- Recesses indoor or outdoor in covered ceilings.

UL C-UL (Canada) Listings

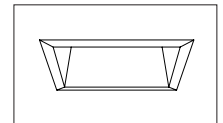
- Damp or dry locations, covered ceilings.
- Through-branch conductors (6 #12 AWG 90°C).
- Type IC. Approved for direct contact with insulation.

Three Year Limited Warranty

- Complete standard fixture.



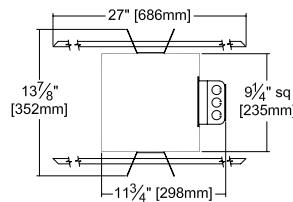
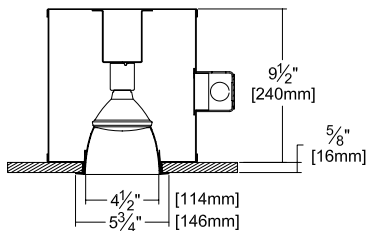
Recessed Round
Open
Single Reflector
Type IC



Square Reflector
Option -SQ

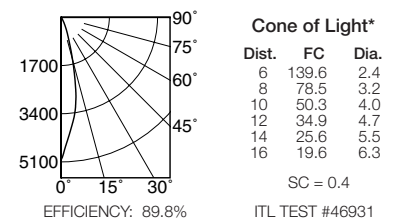
Performance at a Glance

IRR-04078: Type IC



Ceiling Cut-out
5" Dia.

IRR-04078 (75W Narrow Flood)



Cone of Light Key

- Ft. Distance from fixture
FC Footcandles at nadir (0°)
Dia. Circle of light at 50% of FC

* Dia. (in ft.) shown is where FC value is half the FC at nadir.



Exceptional
Energy
Efficiency

THE KIRLIN COMPANY

3401 EAST JEFFERSON AVENUE • DETROIT, MICHIGAN 48207-4232
(313) 259-6400 • Fax: (313) 259-9409 OR (313) 259-3121 • www.kirlinlighting.com

TUNGSTEN HALOGEN &
INCANDESCENT LIGHTING

MAXIMUM WATTAGE

75

CATALOG NUMBER

IRR-04078

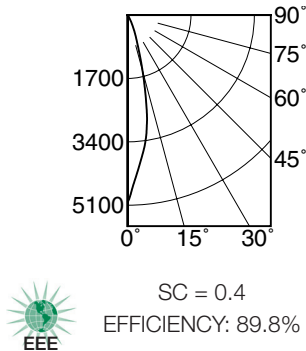
DUE TO OUR CONTINUING EFFORT TO IMPROVE PRODUCTS, TECHNICAL INFORMATION IS SUBJECT TO CHANGE WITHOUT NOTICE.

Alzak® is a registered trademark of ALCOA.

Detailed Photometry - Installed Fixture

Photometry from I.T.L., Boulder, CO

IRR-04078 (75W Narrow Flood)



CANDLEPOWER DISTRIBUTION					
	0.0	22.5	45.0	67.5	90.0
0	5025	5025	5025	5025	5025
5	3949	3949	3949	3949	3949
15	1554	1554	1554	1554	1554
25	317	317	317	317	317
35	44	44	44	44	44
45	13	13	13	13	13
55	3	3	3	3	3
65	0	0	0	0	0
75	0	0	0	0	0
85	0	0	0	0	0
90	0	0	0	0	0

COEFFICIENTS OF UTILIZATION							
RF	20						
RC	80				50		
RW	70	50	30	10	50	30	10
1	103	101	100	98	96	95	94
2	100	97	94	92	92	90	89
3	97	92	89	87	89	87	85
4	94	89	85	83	86	83	81
5	91	86	82	79	83	80	78
6	88	83	79	76	81	78	76
7	86	80	76	74	78	75	73
8	83	77	74	71	76	73	71
9	81	75	72	69	74	71	69
10	79	73	70	67	72	69	67

ITL TEST #46931

Options

Trims

- 16 Champagne Gold specular Alzak reflector. (CP x .98)
- 30 All white reflector. (CP x .98)
- 31 White flange (only) on self-flanged reflector.
- 32 White oversize trim ring. Specify O.D.
- 45 Gasket between ceiling and reflector flange.
- 63 Dune specular Alzak reflector. (CP x .97)
- 69 Wheat specular Alzak reflector. (CP x .97)
- 70 SoftTex clear reflector. (CP x .98)
- 71 SoftTex Dune reflector. (CP x .95)

- 72 Black specular Alzak reflector. (CP x .87)
- 79 Extension collar for ceilings up to 2" thick.
- 91 SoftTex Wheat reflector. (CP x .95)
- 93 Pewter specular Alzak reflector. (CP x .95)
- 94 Custom color/finish. Specify. Consult factory.
- OG OptiGroove black seamless tapered aluminum reflector. White trim, self-flanged. (CP x .90)
- SQ 4.5" Square self-flanged clear specular reflector instead. (Ceiling cut-out 5" sq.)

Other

- 99 Special modification. Consult factory.
- LP With PAR 30 lamp. Specify wattage and beam spread.

SUBMITTAL DATA

JOB NAME

TYPE

WATTAGE

VOLTAGE

CATALOG NUMBER

APPROVAL STAMP