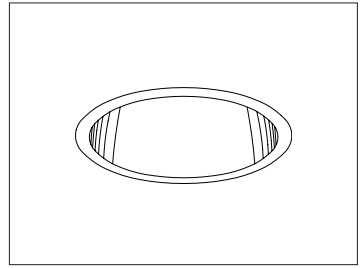


CATALOG #	TYPE	
JOB NAME	WATTAGE	VOLTAGE

4" 1 PAR 16/20 75 WATT MAXIMUM

IRR-04075

Mini-PAR Sparkling 4" Halogen Downlight



Specifications

Lamp / Socket

- Designed for 1 vertical tungsten halogen lamp (by others):
75W maximum PAR 16. Also will accommodate PAR 20 / R20.
- Rated 2000-2500 hour life. 100 CRI.
- Dimmable (controls by others).
- Glazed porcelain medium base socket.

Reflector

- Self-flanged parabolic specular Alzak® aluminum.
- Optional reflector finishes, colors and square trim available.

Aluminum Housing

- Cool. Acrylic enameled 100% aluminum.
- Rustproof and corrosion resistant: Exceeds 1000 hour ASTM 5% salt spray test.
- Dissipates heat across entire surface area extending component life.

- Entire luminaire visible and serviceable from below through aperture.
- Built-in plaster frame. Also see Option -79.

Outlet Box and Thermal Protection

- UL listed J-box with insulated removable cover. Prewired 14 GA (NEC) with 1/2" and 3/4" knockouts.
- Thermal protector (per current NEC) provides automatic cut-off if rated temperature is exceeded.

Installation

- 27" galvanized hanger bars supplied (2).
- Fully adjustable universal galvanized mounting brackets supplied (2).
- Recesses indoor or outdoor in covered ceilings.

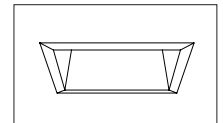
UL, C-UL (Canada) Listings

- Wet, damp or dry locations, covered ceilings.
- Through-branch conductors (6 #12 AWG 90°C).

Three Year Limited Warranty

- Complete standard fixture.

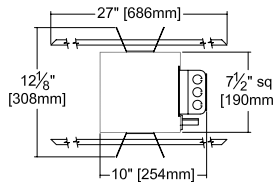
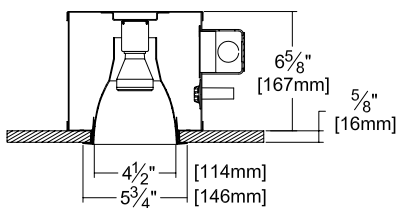
Recessed Round
Open
Single Reflector



Square Reflector
Option -SQ

Performance at a Glance

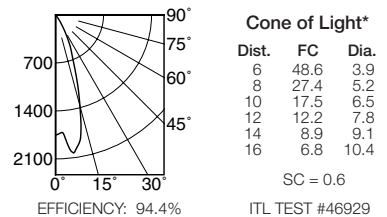
IRR-04075



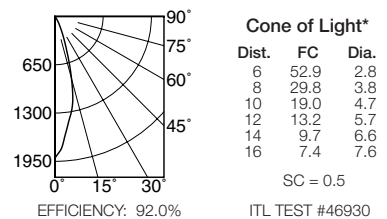
Ceiling Cut-out
5" Dia.



IRR-04075 (75 Watt Narrow Flood)



IRR-04075 (50 Watt Narrow Flood)



Cone of Light Key

- Ft. Distance from fixture
- FC Footcandles at nadir (0°)
- Dia. Circle of light at 50% of FC

* Dia. (in ft.) shown is where FC value is half the FC at nadir.

THE KIRLIN COMPANY

3401 EAST JEFFERSON AVENUE • DETROIT, MICHIGAN 48207-4232
(313) 259-6400 • Fax: (313) 259-9409 OR (313) 259-3121 • www.kirlinlighting.com

TUNGSTEN HALOGEN &
INCANDESCENT LIGHTING

MAXIMUM WATTAGE

75

CATALOG NUMBER

IRR-04075

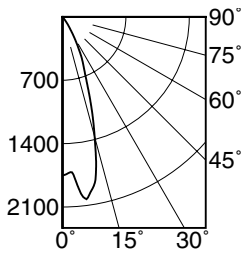
DUE TO OUR CONTINUING EFFORT TO IMPROVE PRODUCTS, TECHNICAL INFORMATION IS SUBJECT TO CHANGE WITHOUT NOTICE.

Alzak® is a registered trademark of ALCOA.

Detailed Photometry - Installed Fixture

Photometry from I.T.L., Boulder, CO

IRR-04075 (75W Narrow Flood)



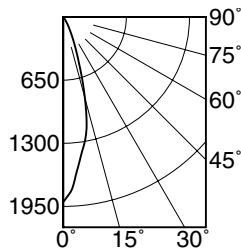
SC = 0.6
EFFICIENCY: 94.4%

CANDLEPOWER DISTRIBUTION					
	0.0	22.5	45.0	67.5	90.0
0	1751	1751	1751	1751	1751
5	1861	1861	1861	1861	1861
15	1372	1372	1372	1372	1372
25	506	506	506	506	506
35	93	93	93	93	93
45	2	2	2	2	2
55	0	0	0	0	0
65	0	0	0	0	0
75	0	0	0	0	0
85	0	0	0	0	0
90	0	0	0	0	0

COEFFICIENTS OF UTILIZATION							
RF	20						
RC	80			50			
RW	70	50	30	10	50	30	10
1	108	106	104	102	100	99	97
2	104	100	97	94	96	93	91
3	100	95	91	88	92	89	86
4	96	91	86	83	88	84	82
5	93	87	82	79	84	81	78
6	89	83	78	75	81	77	74
7	86	79	75	72	78	74	71
8	83	76	72	69	75	71	68
9	80	73	69	66	72	68	66
10	78	71	66	63	70	66	63

ITL TEST #46929

IRR-04075 (50W Narrow Flood)



SC = 0.5
EFFICIENCY: 92.0%

CANDLEPOWER DISTRIBUTION					
	0.0	22.5	45.0	67.5	90.0
0	1905	1905	1905	1905	1905
5	1599	1599	1599	1599	1599
15	863	863	863	863	863
25	207	207	207	207	207
35	39	39	39	39	39
45	5	5	5	5	5
55	0	0	0	0	0
65	0	0	0	0	0
75	0	0	0	0	0
85	0	0	0	0	0
90	0	0	0	0	0

COEFFICIENTS OF UTILIZATION							
RF	20						
RC	80			50			
RW	70	50	30	10	50	30	10
1	106	104	102	100	98	97	96
2	102	98	96	93	94	92	90
3	98	94	90	88	90	88	86
4	95	90	86	83	87	84	82
5	92	86	82	79	84	81	78
6	89	83	79	76	81	78	75
7	86	80	76	73	78	75	72
8	84	77	73	70	76	72	70
9	81	75	71	68	73	70	68
10	79	72	68	66	71	68	65

ITL TEST #46930

Options

Wattage and Voltage

- 58 277/120 volt stepdown transformer for 277 volt line input, prewired into fixture; with 277 volt thermal protector.

Trims

- 16 Champagne Gold specular Alzak reflector. (CP x .98)
- 30 All white reflector. (CP x .98)
- 31 White flange (only) on self-flanged reflector.

- 32 White oversize trim ring. Specify O.D.
- 45 Gasket between ceiling and reflector flange.
- 63 Dune specular Alzak reflector. (CP x .97)
- 69 Wheat specular Alzak reflector. (CP x .97)
- 70 SofTex clear reflector. (CP x .98)
- 71 SofTex Dune reflector. (CP x .95)
- 72 Black specular Alzak reflector. (CP x .87)
- 79 Extension collar for ceilings up to 2" thick.
- 91 SofTex Wheat reflector. (CP x .95)
- 93 Pewter specular Alzak reflector. (CP x .95)
- 94 Custom color/finish. Specify. Consult factory.

- OG OptiGroove black seamless tapered aluminum reflector. White trim, self-flanged. (CP x .90)
- SQ 4.5" Square self-flanged clear specular reflector instead. (Ceiling cut-out 5" sq.)

Other

- 99 Special modification. Consult factory.
- LP With lamp. Specify wattage, beam spread and style (PAR 16, 20; R20).

SUBMITTAL DATA

APPROVAL STAMP

JOB NAME

TYPE

WATTAGE

VOLTAGE

CATALOG NUMBER

LIMITED WARRANTY: CATALOGUED KIRLIN FIXTURES ARE WARRANTED FREE OF DEFECTS IN WORKMANSHIP OR MATERIAL FOR THREE YEARS FROM DATE OF PURCHASE. INSTALL TO N.E.C. IN NORMAL USE. Manufacturer at the option will replace or repair such fixture or refund the purchase price on presentation of proof of purchase and defective fixture at the office of manufacturer within three years of original shipment. Liability of manufacturer is limited to the foregoing, and manufacturer shall not be liable for any other damages, direct or indirect, sustained or suffered by purchaser or any person. This warranty is subject to the buyer in place of all other warranties, expressed or implied. Seller does not warrant as to merchantability or fitness for a particular use, nor will any oral statement constitute a warranty or amend this specific warranty. Abnormal use, abuse of the fixture, improper installation, or repair or modification of the fixture without prior written authorization from the manufacturer will render the warranty void.