

# INFRALED® PRO

Recessed Motorized Patient Lighting System

Product Launch Webinar

6/19/2020



**JANA**  
President



**CHRIS**  
V.P. Sales & Marketing



**CHAD**  
National / East Region



**SCOTT**  
Central Region



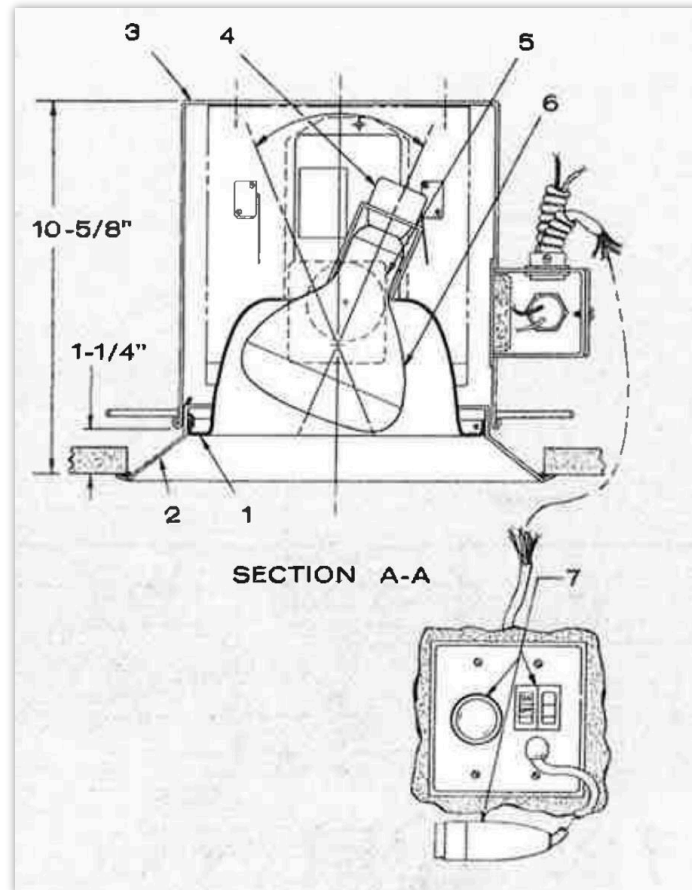
**RICHARD**  
West Region

# Kirlin Motorized Patient Lighting: A Brief History



**1970s**

Kirlin developed the recessed motorized exam light with Dr. DeBakey



## Key Design Elements

1. *Precise aiming*
2. *Sufficient light levels*
3. *Accurate color*
4. *Recessed design*
5. *Single-hand control*
6. *Variable intensity*



# INFRALED® PRO

## PRO 60

50,000 lux on task (pair)

## PRO 45

44,000 lux on task

## PRO 35

44,000 lux on task

## PRO 25

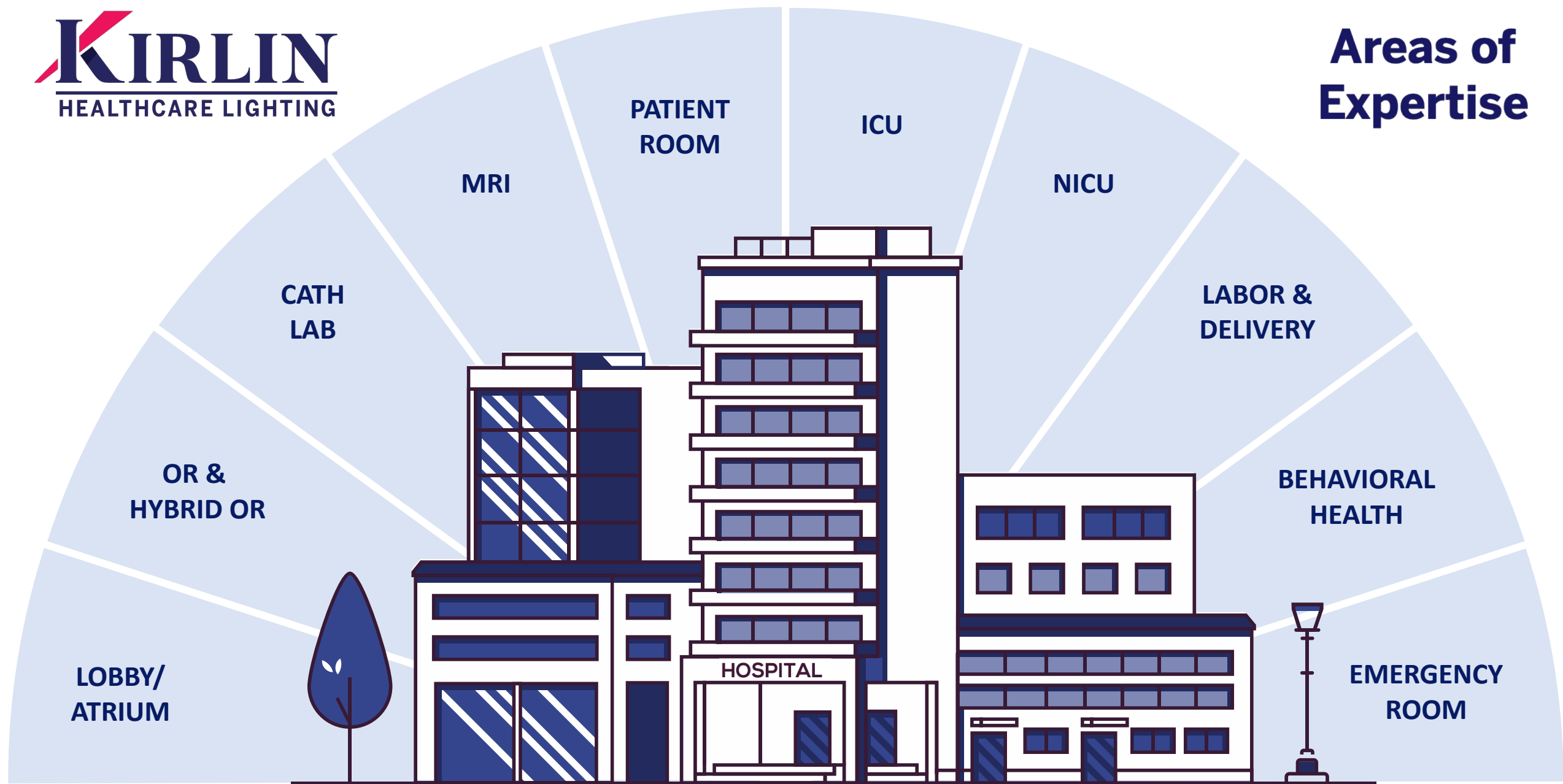
27,000 lux on task



Blue LED indicator highlights selected luminaire



## Areas of Expertise



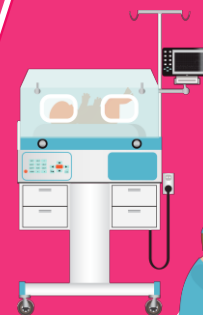
**PATIENT  
ROOM**



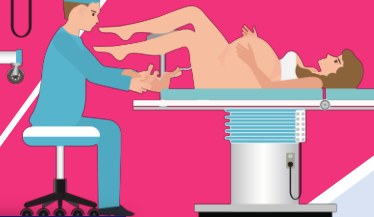
**ICU**



**NICU**

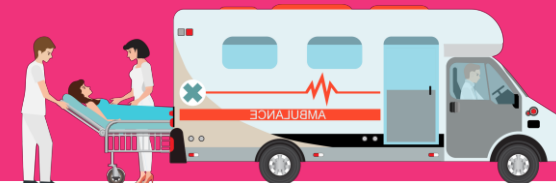


**LABOR &  
DELIVERY**



**BEHAVIORAL  
HEALTH**

**EMERGENCY  
ROOM**



**MRI**

**CATH  
LAB**



**OR &  
HYBRID OR**



**LOBBY/  
ATRIUM**

## CLINICAL NEED

- Sufficient illumination on task
- Instantaneous adjustment
- Variable intensity
- Infection control & prevention

# INFRALED® PRO: A Four Light System



- ❖ Up to **four lights** with one-touch intensity and direction control from remote and wall panel





# INFRALED® PRO: Four New Luminaire Designs

## PRO 60

50,000 lux on task (pair)

## PRO 45

44,000 lux on task

## PRO 35

44,000 lux on task

## PRO 25

27,000 lux on task



Blue LED indicator highlights selected luminaire

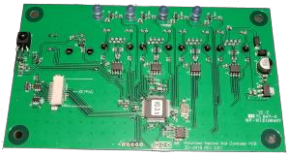


# Exclusive Benefits of INFRALED PRO

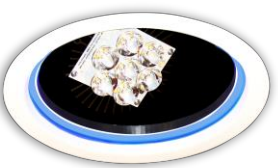
---



Ultimate **Infection Control** with IP66 trim and Perforation Free Housing (Sealed Housing Optional)



All-New State-of-the-Art **Electronics** with New Smooth, Silent, Long-Life **Motors**



Four New **Architectural Trims** with Blue LED Indicator



Higher Efficacy, Higher Output Light Engine, with **95 CRI** and **1% Dimming**



# INFRALED® PRO: Ultimate Infection Control

## Fully recessed design with:



BioGard™ Anti-Microbial Finish



Sealed, IP66-Rated Trims



Perforation Free Housings



Easily Disinfected Controls



# INFRALED® PRO: Better than the Boom!

## Boom-Mounted



- Difficult to clean or disinfect
- Often under-powered
- Physical hazard with drift issues

## Portable



- Difficult to clean or disinfect
- Often under-powered
- Impossible to find
- Trip & fall hazard

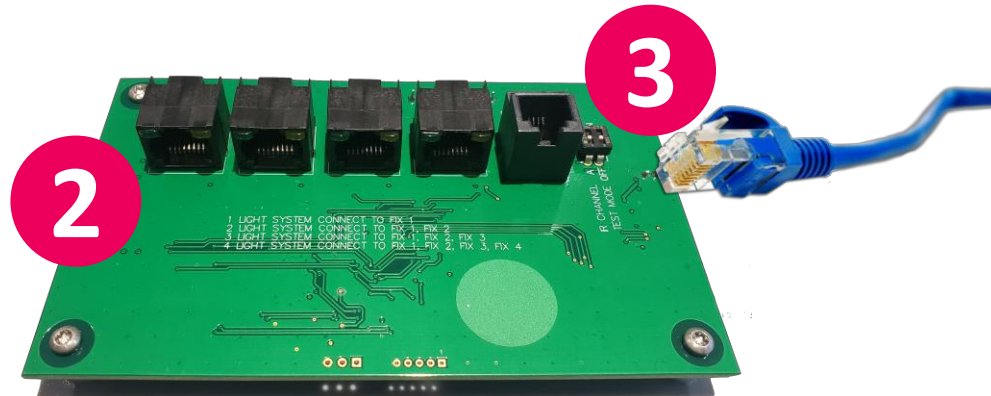
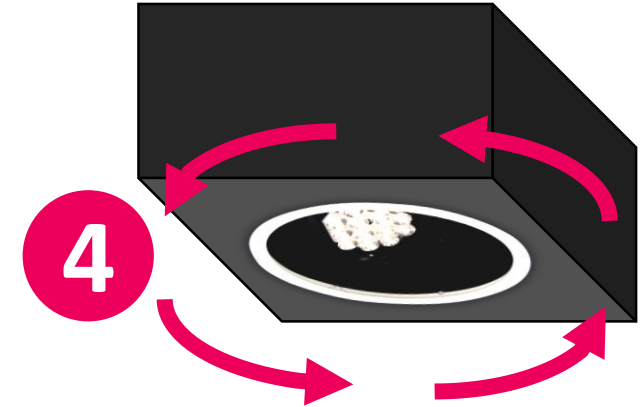
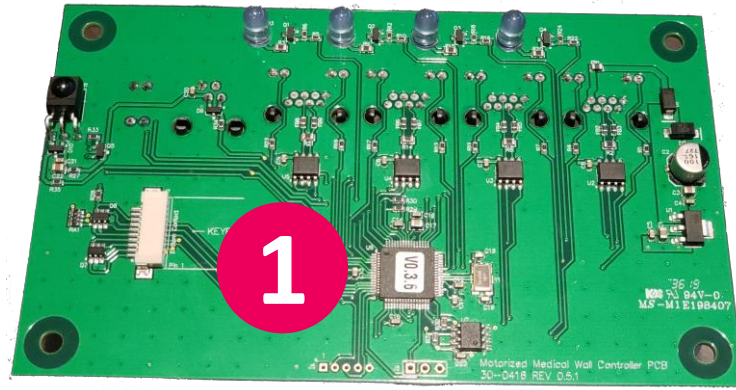
## INFRALED® PRO



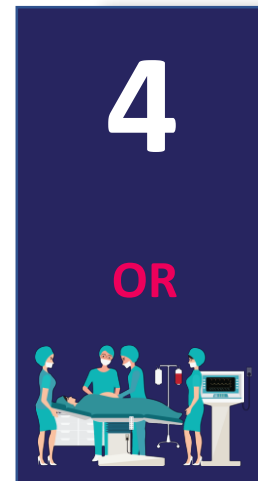
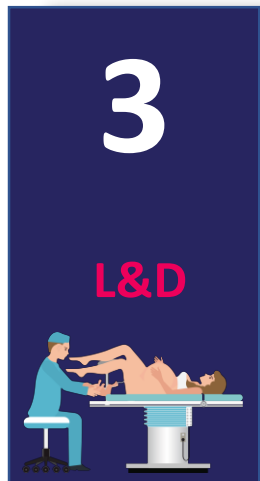
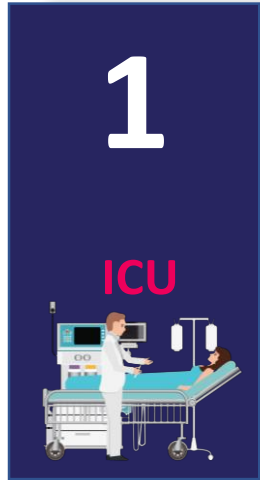
- Fully recessed with IP66 trim & anti-microbial finish
- Easy to disinfect (luminaires & controls)
- One touch direction and intensity control

# All New Electronics

- 1 State-of-the-Art Components
- 2 Support for 1-4 fixtures
- 3 Standard CAT-5 Cable
- 4 Simple fixture orientation configuration



# Example Configurations of INFRALED PRO





# INFRALED® PRO: Mix & Match Luminaires



## PRO 60



### Benefits

- 60° angle of illumination delivers light 64% further into birth canal
- Uniquely designed for the challenges of childbirth
- 2 LED lightheads per luminaire delivering 50,000+ lux

## PRO 25



### Benefits

- 360° rotation and 25° tilt from a discreet 8" lens aperture
- Provides targeted procedural lighting over bassinet
- LED lighthead with lower 27,000 lux intensity to protect infants' vision

# Architectural Trim Design

## PRO 60



- **17" trapezoid**
- Reduced aperture size relative to INFRALED 60
- **Blue LED indicator** along back edge (behind lens)

## PRO 45



- **19" round**
- Designed to facilitate up to 45° tilt & 360° rotation
- **Blue LED indicator** along outer edge (behind lens)

## PRO 35



- **12" round**
- 35° tilt & 360° rotation
- **Blue LED indicator** along outer edge (behind lens)

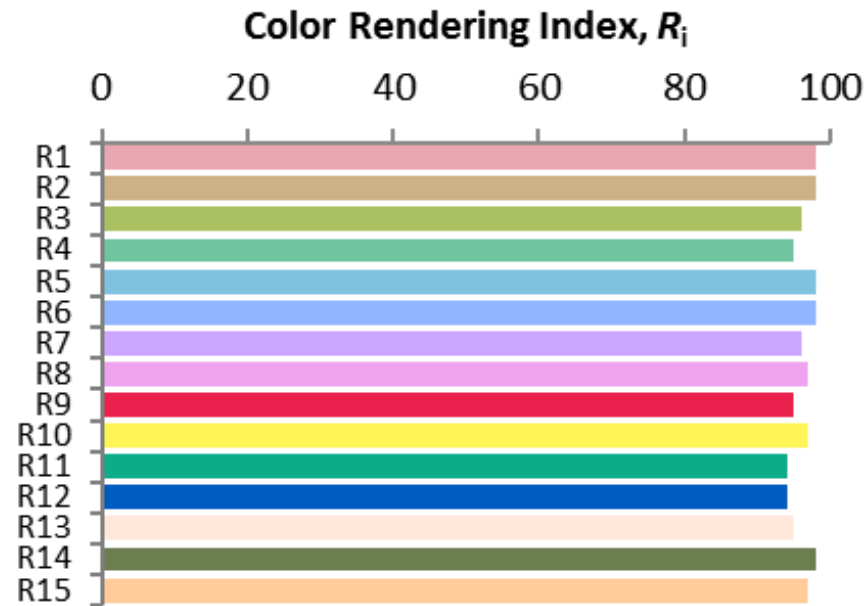
## PRO 25



- **9" round**
- 25° tilt & 360° rotation
- **Blue LED indicator** along outer edge (behind lens)

# High CRI in Multiple Chromaticities

The difference is **95 CRI** with ultra-high **R6, R9, R13** and **R15**



## 3 Chromaticities (Color Temperatures)

**3500K**

Mid-White

Labor/Delivery  
NICU

**4100K**

Cool White

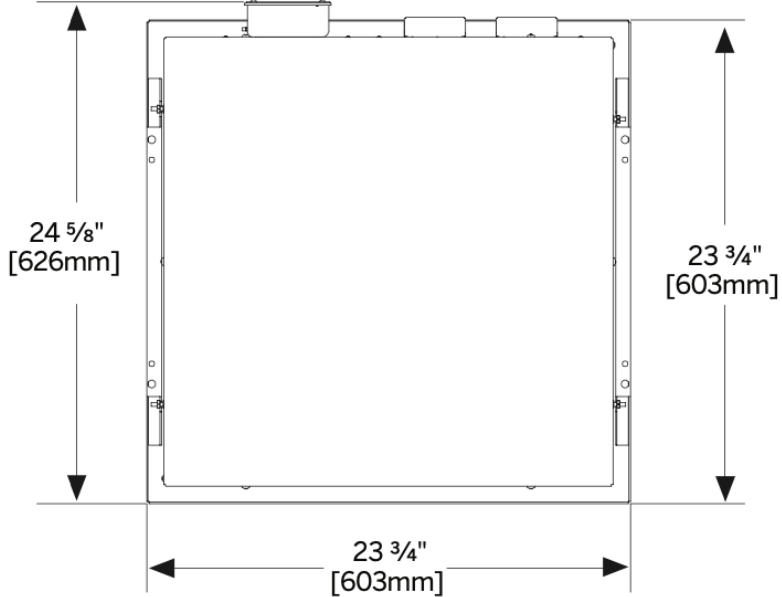
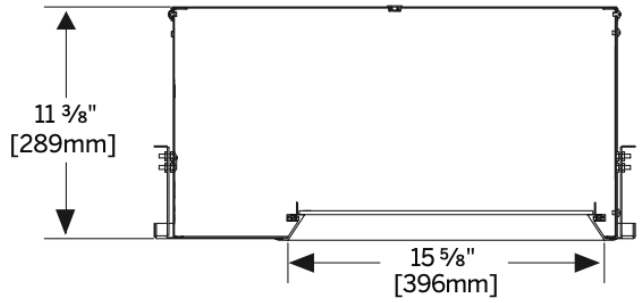
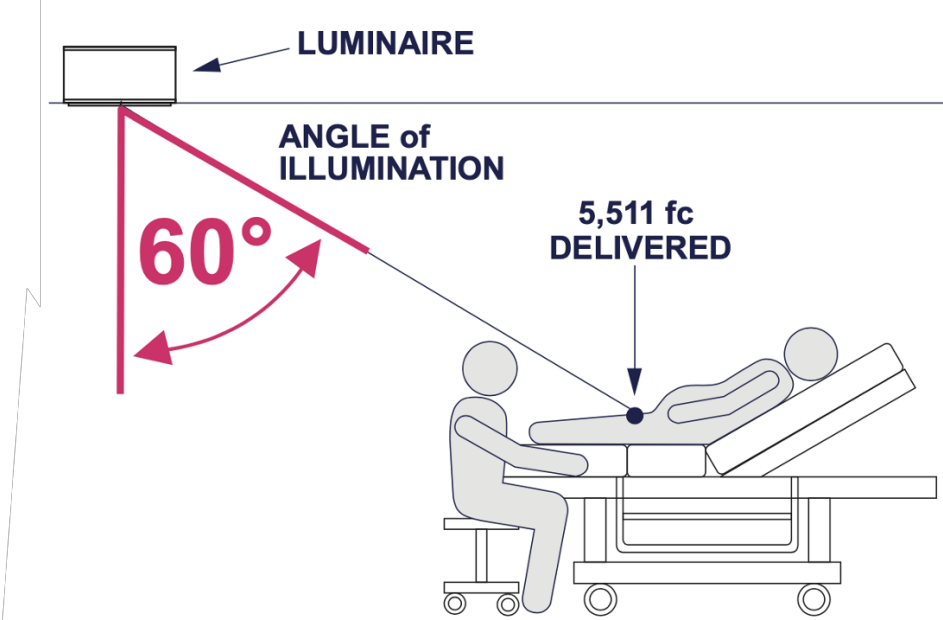
ICU  
Cath Lab

**5000K**

Ultra-Cool White

EP Lab  
Hybrid OR

# PRO 60: High Angle Exam Light for Childbirth, OR





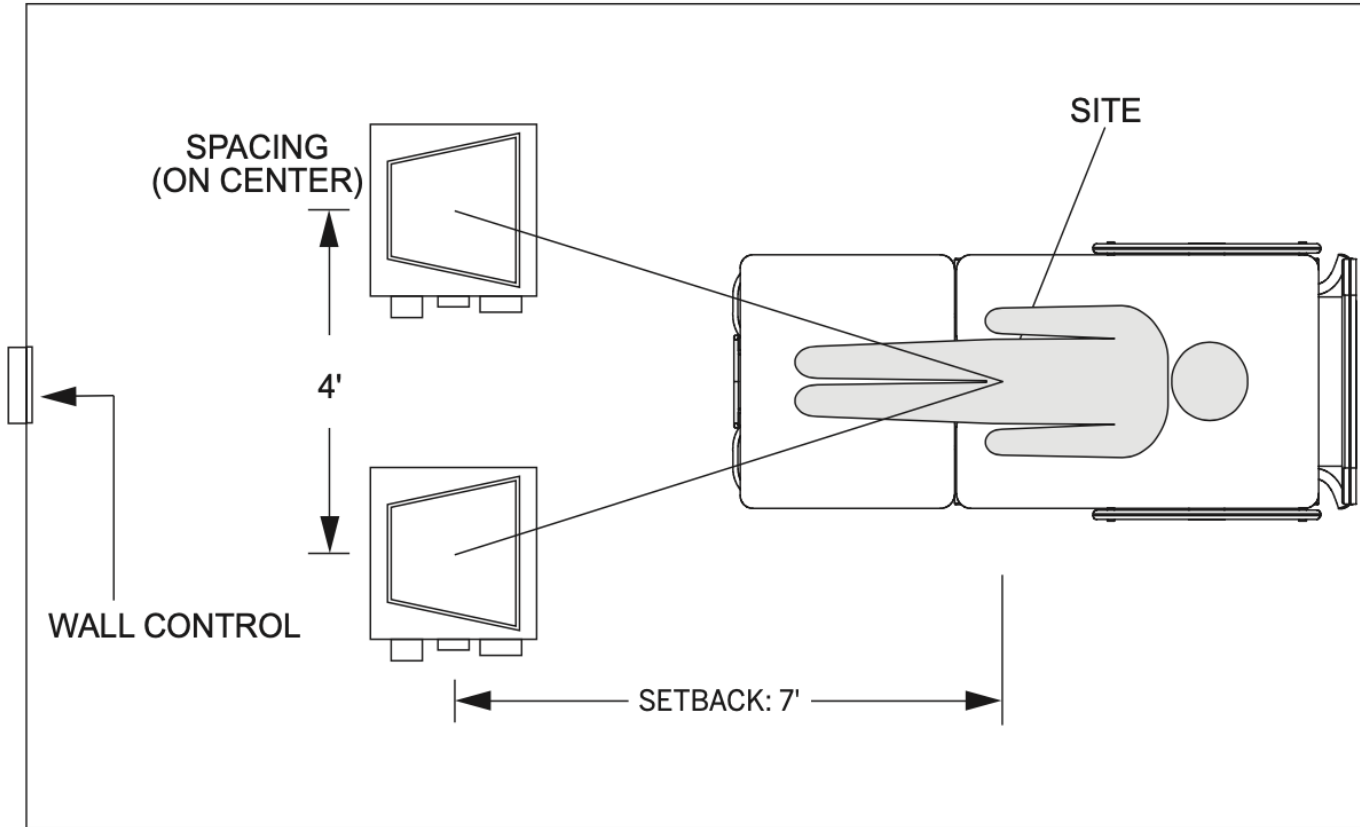
# INFRALED® PRO 60

Kirlin Lighting's INFRALED® PRO 60 is the only dedicated Labor & Delivery lighting solution on the market

- Unique optical design for 60° angle of illumination
- Fully recessed
- Sterile and easy to clean
- Remote-adjustable
- Dimmable to 1%
- Suitable for all OB procedures



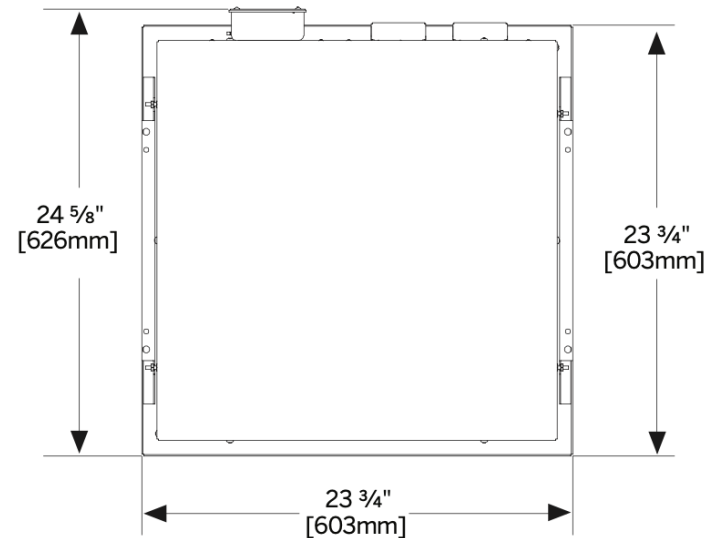
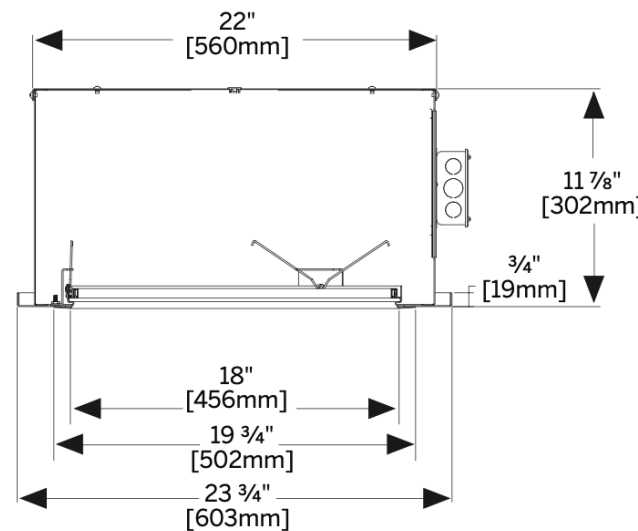
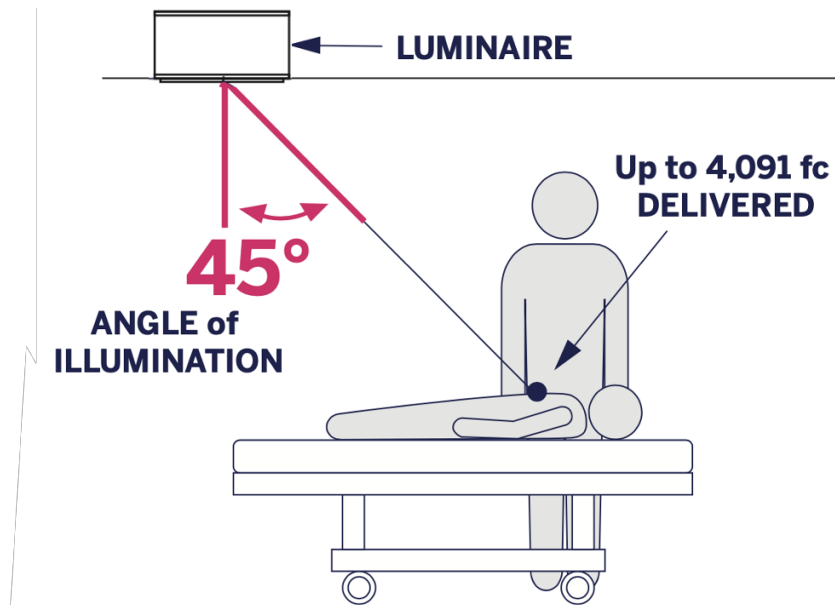
# Designing a Labor/Delivery Room



Ceiling Height	Setback from Break in Bed	Angle of Illumination	Footcandles on Task	Lux on Task
8'	7'	58.4°	5,857	63,044
	6'	54.7°	7,030	75,670
8.5'	8'	55.5°	4,665	50,214
	7'	51.8°	5,511	59,320
9'	8'	56.4°	4,426	47,641
	7'	53.0°	5,164	55,585
9.5'	9'	54.2°	3,408	36,683
	8'	50.9°	4,184	45,036

Recommended setback locations achieve highest angle of illumination, delivering light further into birth canal. For layout assistance, consult factory.

# PRO 45: Exam Light for Cath Lab, OR, Hybrid OR



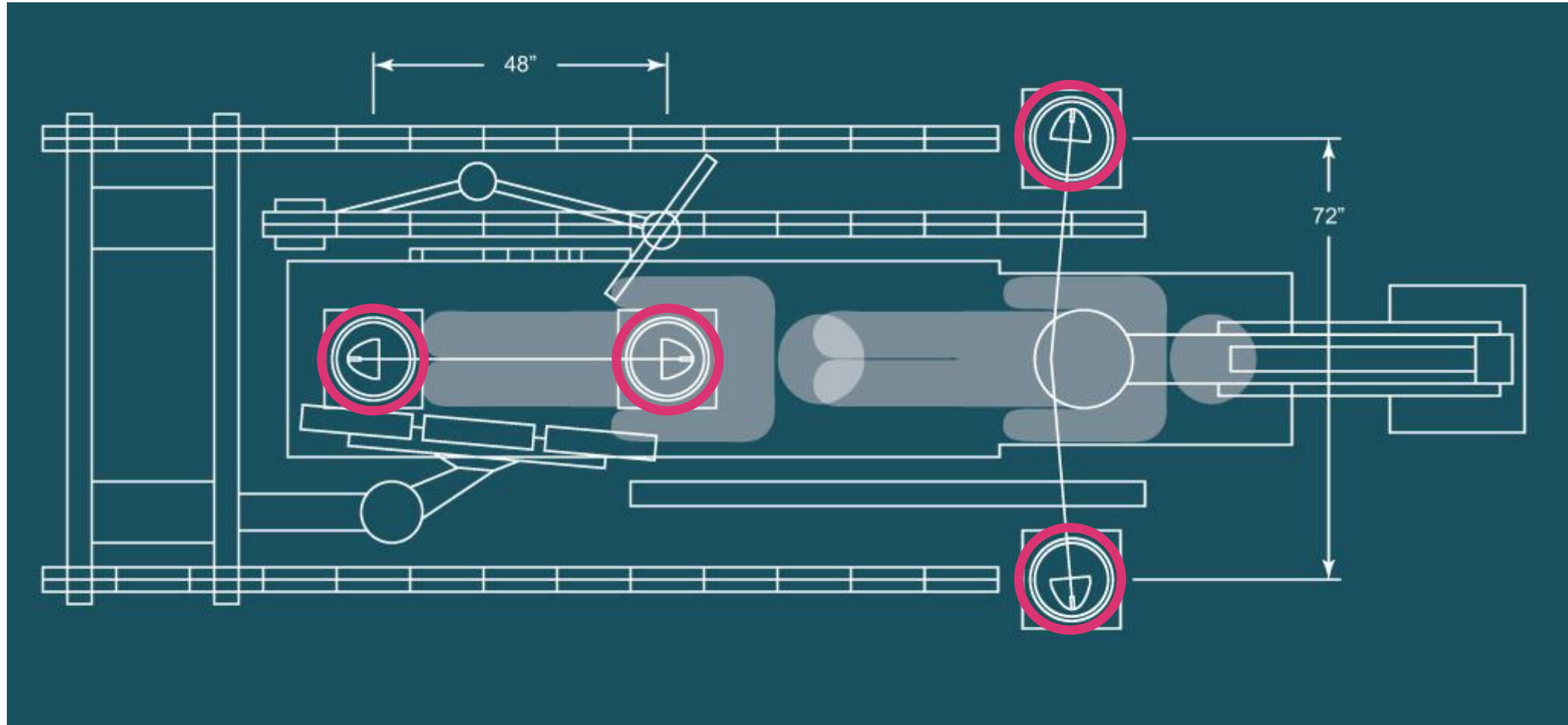


# PRO 45 in the Cath Lab & Hybrid OR

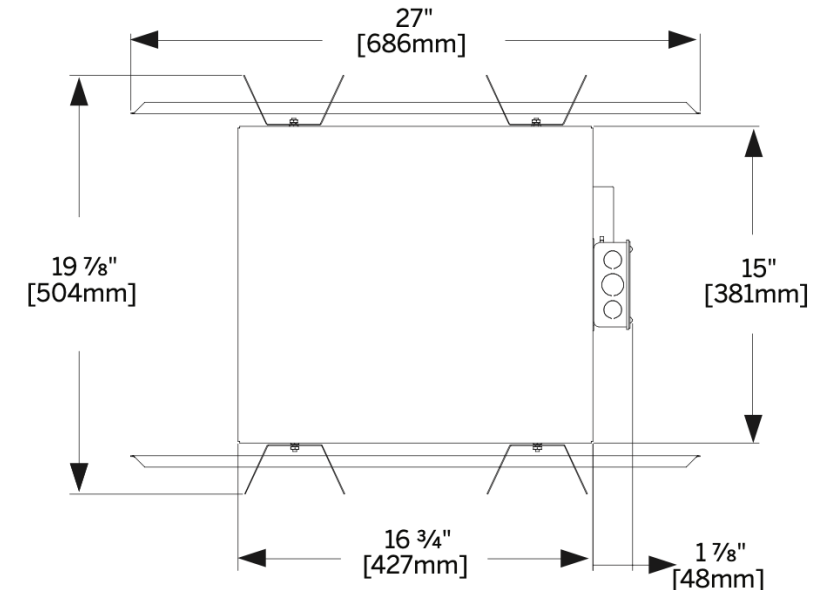
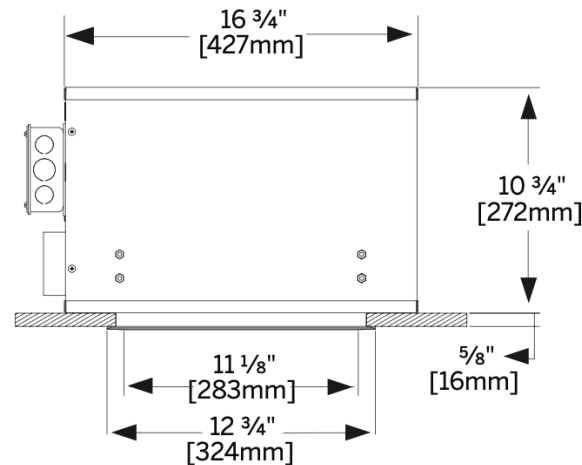
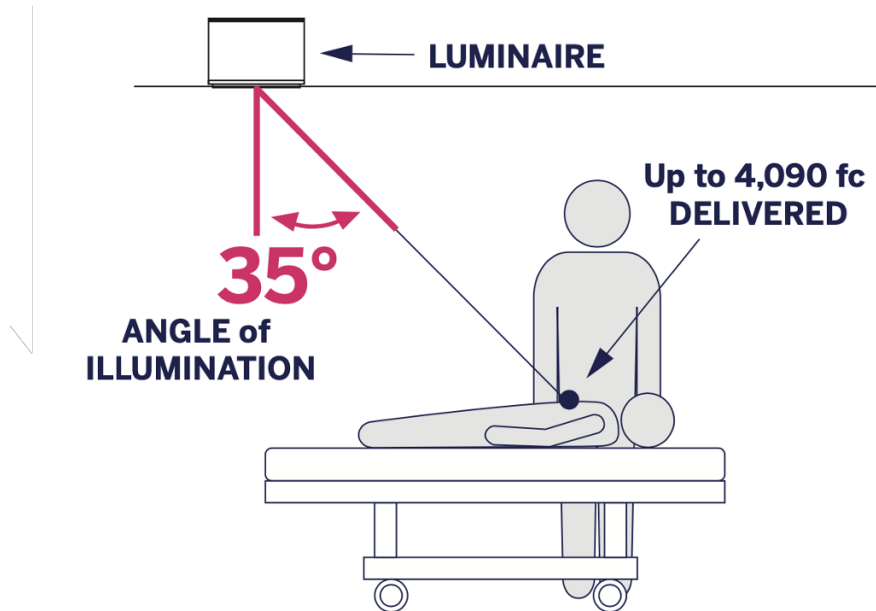




# Typical Fixture Locations for Cath Labs



# PRO 35: Exam Light for ICU, Patient Room, ED

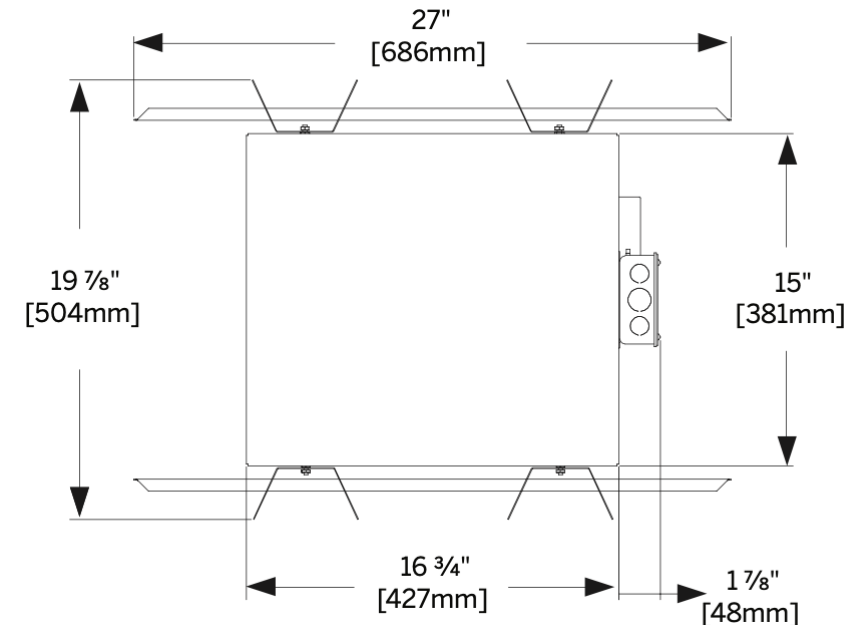
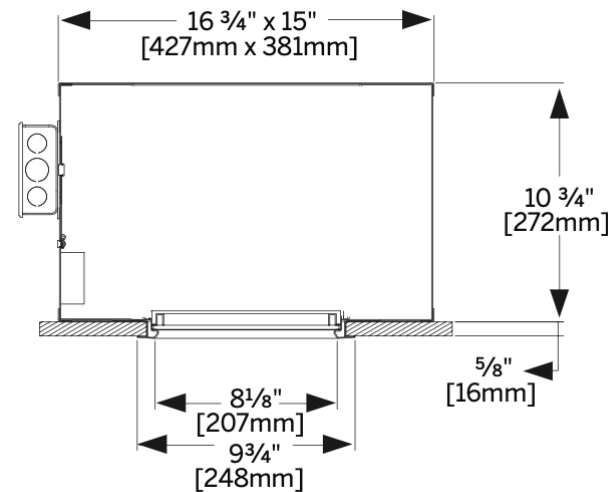
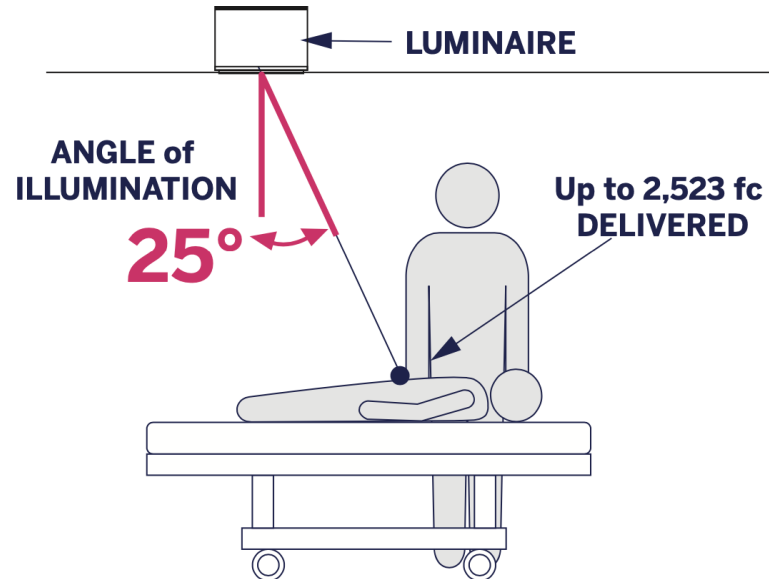
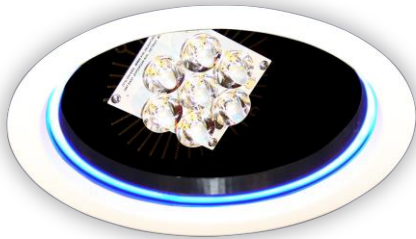


# PRO 35 in the ICU/Patient Room and ED



# PRO 25: Exam Light for NICU, ICU, Patient Room

“Baby MED”





# PRO 25 in the NICU & Labor/Delivery



# INFRALED® PRO

Kirlin's all-new, fully recessed, motorized patient lighting system, designed for the clinical needs of many departments



OR & HYBRID OR



PRO 60



PRO 45



CARDIAC CATH LAB



PRO 45



ICU/PATIENT ROOM



PRO 35



PRO 25



NICU



PRO 35



PRO 25



LABOR & DELIVERY



PRO 60



PRO 25



EMERGENCY



PRO 35



PRO 25

# INFRALED® PRO Product Information

---

<https://healthcare.kirlinlighting.com>

# The INFRARED PRO Circle of Success

---





# INFRALED® PRO Summary

## What?

### **Recessed Motorized Patient Lighting System**

4 Lights Per Controller  
(Remote + Wall Panel)

4 Unique Models delivering  
up to 50,000 lux on task

Dimming to 1%

## Why?

### **Minimize the risk of infection!**

No drift, no hazard

95 CRI for accurate visual  
diagnosis

One-touch controls for  
direction & intensity

## Where?

Labor & Delivery

ICU/Patient Room

NICU

Cath Lab

OR/Hybrid OR

Emergency Department

# A Legacy in Healthcare Lighting



## Trusted by the Best

Kirlin lighting is trusted by 19 of the U.S. News's Top 20 Honor Roll hospitals

# Questions?