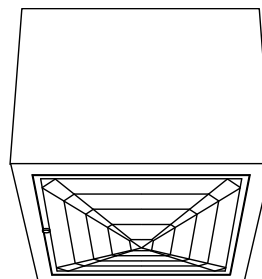


### Surface Lensed E-Lamp Downlight: 50 to 250 Watt



13" 250W **HSS-13189**

## Features

### Lamp

- Designed for mogul base metal halide T-15 or E-lamps. See chart below for available wattages.
- See Option -43 and chart below for lower wattage or HPS availability.

### Socket

- Pulse rated. Nickel-plated brass screw shell. Silicone leads. Glazed porcelain.
- Vertical.

### Reflector

- GlasSurfaced™ clear specular aluminum.

### Trim Assembly

- UV absorbing tempered prismatic shock resisting spread Kirlin lens.
- Rustfree die-formed door and captive thumb screw(s). Concealed hinges.
- Beveled cast aluminum frame tooled to

ensure close fit with door. White acrylic finish.

### Ballast Assembly: Specify Voltage

- WhisperPack™ fully encapsulated 180°C rated HPF pulse start ballast.
- 50-150 watt: Class H, high reactance for 120 volt, linear reactor for 277 volt.
- 175-250 watt: CWA for 120 volt and Options -65, -66, -HL; Class H, reactor for 277 volt.
- Capacitor and ignitor supplied.
- Dimming (-39) and electronic (-96) ballasts available. See Options.
- Cool, quiet, long-life. Silicone leads.

### Fuse

- Fused primary. Renewable. Not for 480 volt.

### Housing

- Tempered, rigid rustproof aluminum:

Exceeds 1000 hour ASTM 5% salt spray test.

- Cool: Dissipates heat across entire surface.
- No visible housing hardware.

### Installation

- Center point mounting with snug fit to ceiling. Mounting hardware furnished.
- Indoor or outdoor for covered ceiling use. (See Option -89)
- Collar for mounting beneath surface outlet box available. (Option -80)
- Pendant mount available. (Option -PM)
- Wall bracket mount available. (Option -WB)

### UL, C-UL (Canada) Listings

- Wet, damp or dry locations, covered ceilings. (See Option -89)

### Three Year Limited Warranty

- Complete standard fixture, including ballast.

## Wattage Availability

Catalog No.	Lamp/Base	Standard Wattage		Option -43: Lower Wattage		Max. Standby Wattage (-49-65-66-LS)
		Pulse MH	-24 (HPS)	Pulse MH	-24 (HPS)	
HSS-13189	ED-28/Mog	250	250	150-200	150	150

## Options

### Sources and Ballasts

- 24 HPS ballast instead. See wattage chart above for available wattages. Specify voltage.
- 39 Remote (10' max.) electronic dimming ballast instead, for pulse start metal halide. Consult factory for wattage and voltage availability.
- 96 Remote (15' max.) electronic MH ballast instead. Consult factory for availability in 175W or above, or for internal mounting.

### Wattage and Voltage

- 43 Lower wattage: See Option -43 chart above for available lower wattages. Specify voltage.
- 120 120 volt, 60 Hz. ballast.
- 277 277 volt, 60 Hz. ballast.
- 347 347 volt, 60 Hz. ballast. Consult factory for dimming or electronic.
- 97 Other voltage ballast. Consult factory.

### Relays, Standbys, Lamps (See Chart)

- 49 Extra circuit DCB socket. Do not energize simultaneously with main source. Also see -LS.
- 65 Electronic standby system and DCB socket. Following HID outage, provides immediate light until HID restrikes. Also see -66 and -LS.

- 66 Electronic time delay standby system and DCB socket. Following outage, provides light until HID reaches 70% output. Also see Option -LS.
- HL Hi-Lo wiring modification for use with external relay systems (by others). 175 watt or above. Specify system separately.
- LP With lamp. Specify source, wattage, color temperature, and clear or coated. (3700°K standard for metal halide)
- LS With T-4 DCB tungsten halogen standby lamp. Use only with Options -49, -65 or -66.

### Lenses and Trims

- 15 Prismatic C#73 flat glass lens instead.
- 26 Tamperproof trim. One key / ten fixtures. See -27.
- 27 Clear 1/4" tempered glass beneath tempered prismatic C#73 flat glass lens for vandal resistance. Also see Option -26.
- 46 Gasket between trim and lens.
- DG Drop Guard with tempered flat prismatic glass. Galvanized steel. White acrylic finish.
- DH Drop Holophane tempered lens.
- TC Teflon coated safety lens; retains glass particles in event of breakage.

### Luminaire (Housing) Finishes

- 35 Natural Aluminum enameled luminaire finish.
- 36 Gold enameled luminaire finish instead.

- 37 Dark Bronze enameled luminaire finish instead.
- 38 Black enameled luminaire finish instead.
- 94 Custom color luminaire finish. Consult factory.

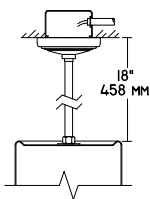
### Mounting Options

- 54 Safety cable through pendant stem. 12" longer than specified stem length. Anchored to fixture. Use with Option -PM.
- 80 2" white extension collar for surface outlet box. Also see Option -89.
- 87 Custom -PM length. Specify up to 4 feet or consult factory for longer lengths with couplers.
- 88 Swivel canopy for sloped ceilings up to 45°. Earthquake rated. Use with Option -PM.
- 89 Sealed top feature prevents moisture and insect intrusion from above in outdoor or high humidity areas. Must add to Options -80, -PM or -WB for Wet Label listing.
- PM Pendant mount instead. 3/8" T.S. x 18" standard. Also see Options -54, -87, -88, -89.
- WB Wall bracket mount instead. Also see Option -89.

### Other Options

- 99 Special modification. Consult factory.

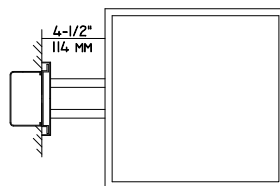
### HSS-13189



#### Representative Views:

(Right) With optional wall bracket (Option -WB)

(Left) With optional pendant mount (Option -PM)

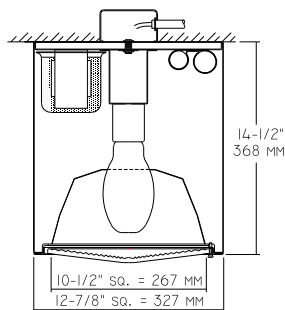


#### Cone of Light Key

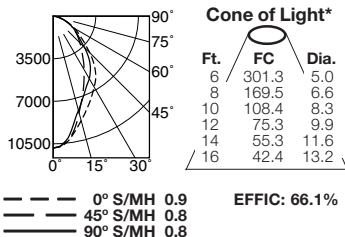
- Ft.** Distance from fixture
  - FC** Footcandles (average)
  - Dia.** Circle of light at 50% of FC
- \* Dia. (in ft.) shown is where FC value is half the FC at nadir.

**C.U. (Coefficients of Utilization) Tables are available on request. Please contact your Kirlin representative.**

### HSS-13189 250W



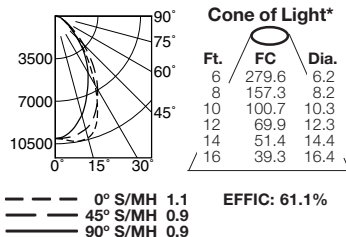
#### HSS-13189 (Clear Lamp)



ITL TEST #51621  
 \*LER = 53.2 \*AEC = \$4.51

CANDLEPOWER DISTRIBUTION					
	0.0	22.5	45.0	67.5	90.0
0	10845	10845	10845	10845	10845
5	10584	10558	10498	10456	10430
15	8883	8598	8230	8068	8027
25	7395	6662	5979	6346	6438
35	6101	5073	4289	5317	5338
45	4238	3473	3101	4013	3627
55	2607	2124	2246	2415	2272
65	1507	1283	1421	1339	1385
75	601	566	646	571	581
85	112	112	152	122	112
90	21	21	35	21	21

#### HSS-13189-15 (Clear Lamp)



ITL TEST #51622  
 \*LER = 49.2 \*AEC = \$4.88

CANDLEPOWER DISTRIBUTION					
	0.0	22.5	45.0	67.5	90.0
0	10065	10065	10065	10065	10065
5	10227	10196	10044	9911	9840
15	10360	10187	9627	8852	8424
25	8190	8282	8073	7126	6326
35	4951	5312	5720	5099	4411
45	2607	2862	3244	2965	2506
55	1273	1390	1574	1507	1334
65	693	718	784	759	744
75	377	387	412	417	417
85	92	117	127	133	122
90	0	0	0	0	0

\* LER (Luminaire Efficacy Rating) = Luminaire Effic. x Total Lamp Lumens x Ballast Factor  
 Input Watts

\* AEC = Annual Energy Cost per 1000 lumens  
 (based on 3000 hours use @ \$0.08 KWH).

## SUBMITTAL DATA

JOB NAME

TYPE

WATTAGE

CATALOG NUMBER

VOLTAGE

## APPROVAL STAMP

LIMITED WARRANTY: CATALOGED KIRLIN FIXTURES ARE WARRANTED FREE OF DEFECTS IN WORKMANSHIP OR MATERIAL FOR THREE YEARS FROM DATE OF PURCHASE. INSTALLED TO N.E.C. IN NORMAL USE. Manufacturer at its option will replace or repair such fixture or refund the purchase price upon presentation of a written authorization from the manufacturer will render the warranty void. Seller does not warrant as to merchantability or fitness for a particular use, nor will any oral statement constitute a warranty or amend this specific warranty. Abnormal use, abuse of the fixture, improper installation, or repair, or modification of the fixture without prior written authorization from the manufacturer will render the warranty void.