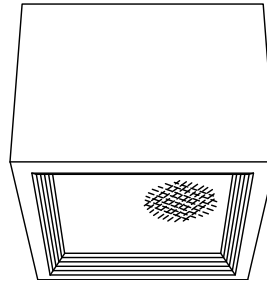


### Surface Lensed E-Lamp Regressed Downlights: 50 to 200 Watt



10" 100W **HSS-10192**  
13" 200W **HSS-13193**

### Features

#### Lamp

- Designed for medium base metal halide E-lamps. See chart below for standard and optional wattages.
- See Option -43 and chart below for lower wattage or HPS availability.

#### Socket

- Medium base. Pulse rated. Nickel-plated brass screw shell. Silicone leads. Glazed porcelain.
- Horizontal: HSS-10192.
- Vertical: HSS-13193.

#### Reflector

- GlasSurfaced™ multi-faceted specular aluminum.

#### Trim Assembly

- Tapered black OptiGroove with white self-flanged trim.

- UV absorbing tempered prismatic low brightness C#73 flat glass lens.
- Optional trims and lenses available.

#### Ballast Assembly: Specify Voltage

- WhisperPack™ fully encapsulated 180°C rated HPF pulse start ballast.
- 50-150 watt: Class H, high reactance for 120 volt, linear reactor for 277 volt.
- 175-200 watt: Super CWA for 120 volt and Options -65, -66, -HL; Class H, linear reactor for 277 volt.
- Capacitor and ignitor supplied.
- Dimming (-39) and electronic (-96) ballasts available. See Options.
- Cool, quiet, long-life. Silicone leads.

#### Fuse

- Fused primary. Renewable. Not for 480 volt.

#### Housing

- Tempered, rigid rustproof aluminum:

Exceeds 1000 hour ASTM 5% salt spray test.

- Cool: Dissipates heat across entire surface area.
- No visible housing hardware.

#### Installation

- Center point mounting with snug fit to ceiling. Mounting hardware furnished.
- Indoor or outdoor for covered ceiling use. (See Option -89)
- Collar for mounting beneath surface outlet box available. (Option -80)
- Pendant mount available. (Option -PM)
- Wall bracket mount available. (Option -WB)

#### UL, C-UL (Canada) Listings

- Wet, damp or dry locations, covered ceilings. (See Option -89)

#### Three Year Limited Warranty

- Complete standard fixture, including ballast.

### Wattage Availability

| Catalog No. | Lamp/Base | Standard Wattage |           | Option -43: Lower Wattage |           | Max. Standby Wattage (-49-65-66-LS) |
|-------------|-----------|------------------|-----------|---------------------------|-----------|-------------------------------------|
|             |           | PulseMH          | -24 (HPS) | PulseMH                   | -24 (HPS) |                                     |
| HSS-10192   | ED-17/Med | 100              | 100       | 50-70                     | 35-70     | 100                                 |
| HSS-13193   | ED-17/Med | 200              | 150       | 50-175                    | 35-150    | 100                                 |

### Options

#### Sources and Ballasts

- 24 HPS ballast instead. See wattage chart above for available wattages. Specify voltage.
- 39 Remote (10' max.) electronic dimming ballast instead, for pulse start metal halide. Consult factory for wattage and voltage availability.
- 96 Remote (15' max.) electronic MH ballast instead. Consult factory for availability in 175W or above, or for internal mounting.

#### Wattage and Voltage

- 43 Lower wattage: See Option -43 chart above for available lower wattages. Specify voltage.
- 120 120 volt, 60 Hz. ballast.
- 277 277 volt, 60 Hz. ballast.
- 347 347 volt, 60 Hz. ballast. Consult factory for dimming or electronic.
- 97 Other voltage ballast. Consult factory.

#### Relays, Standbys, Lamps (See Chart)

- 49 Extra circuit DCB socket. Do not energize simultaneously with main source. Also see -LS.

- 65 Electronic standby system and DCB socket. Following HID outage, provides immediate light until HID restrikes. Also see -66 and -LS.
- 66 Electronic time delay standby system and DCB socket. Following outage, provides light until HID reaches 70% output. Also see Option -LS.
- HL Hi-Lo wiring modification for HSS-13193 only. For use with external relay systems (by others). 175 watt or above. Specify system separately.
- LP With lamp. Specify source, wattage, color temperature, and clear or coated. (3700°K standard for metal halide)
- LS With T-4 DCB tungsten halogen standby lamp. Use only with Options -49, -65 or -66.

#### Lenses and Trims

- 27 Clear 1/4" tempered glass beneath tempered prismatic C#73 flat glass lens for vandal resistance. Also see Option -26.
- 40 White grooveless flare trim assembly instead.
- 46 Gasket between trim and lens.
- FR Fresnel tempered lens instead.

#### Luminaire (Housing) Finishes

- 35 Natural Aluminum enameled luminaire finish instead.

- 36 Gold enameled luminaire finish instead.
- 37 Dark Bronze enameled luminaire finish instead.
- 38 Black enameled luminaire finish instead.
- 94 Custom color luminaire finish. Consult factory.

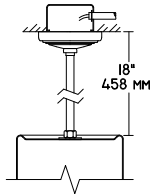
#### Mounting Options

- 54 Safety cable through pendant stem. 12" longer than specified stem length. Anchored to fixture. Use with Option -PM.
- 80 2" white extension collar for mounting luminaire beneath surface outlet box. Also see Option -89.
- 87 Custom -PM length. Specify up to 4 feet or consult factory for longer lengths with couplers.
- 88 Swivel canopy for sloped ceilings up to 45°. Earthquake rated. Use with Option -PM.
- 89 Sealed top feature prevents moisture and insect intrusion from above in outdoor or high humidity areas. Must add to Options -80, -PM or -WB for Wet Label listing.
- PM Pendant mount instead. 3/8" T.S. x 18" standard. Also see Options -54, -87, -88, -89.
- WB Wall bracket mount instead. Also see Option -89.

#### Other Options

- 99 Special modification. Consult factory.

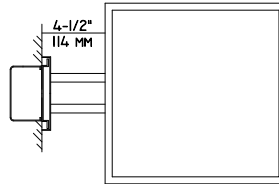
### HSS-10192 HSS-13193



Representative Views:

(Right) With optional wall bracket (Option -WB)

(Left) With optional pendant mount (Option -PM)



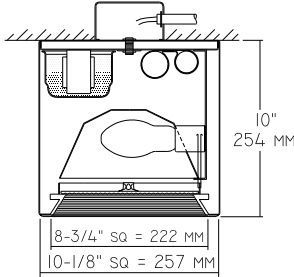
#### Cone of Light Key

- Ft.** Distance from fixture
- FC** Footcandles (average)
- Dia.** Circle of light at 50% of FC
- \* Dia. (in ft.) shown is where FC value is half the FC at nadir.

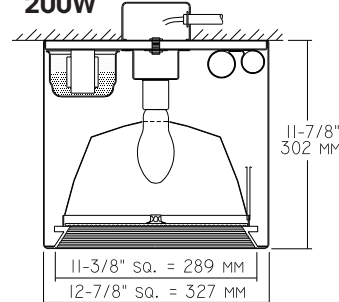
C.U. (Coefficients of Utilization) Tables are available on request. Please contact your Kirlin representative.

LIMITED WARRANTY: CATALOGED KIRLIN FIXTURES ARE WARRANTED FREE OF DEFECTS IN WORKMANSHIP OR MATERIAL FOR THREE YEARS FROM DATE OF PURCHASE. INSTALLED TO N.E.C. IN NORMAL USE. Manufacturer at its option will replace or repair such fixture or refund the purchase price upon presentation of a written warranty claim. This warranty does not cover damage to the fixture caused by misuse, abuse, or modification of the fixture without prior written authorization from the manufacturer. Seller does not warrant as to merchantability or fitness for a particular use, nor will any oral statement constitute a warranty, or amend this specific warranty. Abnormal use, abuse of the fixture, improper installation, or repair, or modification of the fixture without prior written authorization from the manufacturer will render the warranty void.

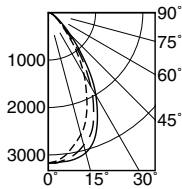
### HSS-10192 100W



### HSS-13193 200W



#### HSS-10192 (Coated Lamp)



#### Cone of Light\*

| Ft. | FC   | Dia. |
|-----|------|------|
| 6   | 88.0 | 6.1  |
| 8   | 49.5 | 8.1  |
| 10  | 31.7 | 10.2 |
| 12  | 22.0 | 12.2 |
| 14  | 16.2 | 14.2 |
| 16  | 12.4 | 16.3 |

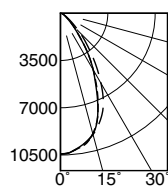
|    | CANDLEPOWER DISTRIBUTION |      |      |       |       |
|----|--------------------------|------|------|-------|-------|
|    | 0.0                      | 45.0 | 90.0 | 135.0 | 180.0 |
| 0  | 3169                     | 3169 | 3169 | 3169  | 3169  |
| 5  | 3088                     | 3109 | 3161 | 3163  | 3142  |
| 15 | 2661                     | 2845 | 3060 | 3030  | 2893  |
| 25 | 1915                     | 2371 | 2458 | 2655  | 2266  |
| 35 | 1095                     | 1546 | 1508 | 1770  | 1312  |
| 45 | 463                      | 759  | 657  | 849   | 524   |
| 55 | 209                      | 287  | 279  | 319   | 226   |
| 65 | 120                      | 125  | 126  | 127   | 112   |
| 75 | 53                       | 49   | 56   | 45    | 49    |
| 85 | 0                        | 1    | 1    | 1     | 0     |
| 90 | 0                        | 0    | 0    | 0     | 0     |

- 0° S/MH 0.9
- 90° S/MH 1.0
- 180° S/MH 1.0

EFFIC: 53.6%

ITL TEST #51608  
\*LER = 30.4  
•AEC = \$7.90

#### HSS-13193 (Clear Lamp)



#### Cone of Light\*

| Ft. | FC    | Dia. |
|-----|-------|------|
| 6   | 289.8 | 5.5  |
| 8   | 163.0 | 7.4  |
| 10  | 104.3 | 9.2  |
| 12  | 72.4  | 11.1 |
| 14  | 53.2  | 12.9 |
| 16  | 40.7  | 14.8 |

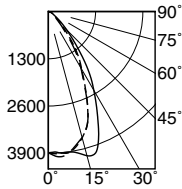
|    | CANDLEPOWER DISTRIBUTION |       |       |       |       |
|----|--------------------------|-------|-------|-------|-------|
|    | 0.0                      | 22.5  | 45.0  | 67.5  | 90.0  |
| 0  | 10431                    | 10431 | 10431 | 10431 | 10431 |
| 5  | 10245                    | 10240 | 10263 | 10276 | 10245 |
| 15 | 9232                     | 9269  | 9300  | 9262  | 9257  |
| 25 | 6464                     | 6866  | 7483  | 6840  | 6315  |
| 35 | 3399                     | 3917  | 4437  | 3917  | 3387  |
| 45 | 1372                     | 1669  | 2027  | 1625  | 1298  |
| 55 | 543                      | 692   | 729   | 630   | 556   |
| 65 | 272                      | 309   | 297   | 309   | 297   |
| 75 | 136                      | 123   | 111   | 130   | 136   |
| 85 | 0                        | 0     | 0     | 0     | 0     |
| 90 | 0                        | 0     | 0     | 0     | 0     |

- 0° S/MH 0.9
- 45° S/MH 1.0
- 90° S/MH 0.9

EFFIC: 54.7%

ITL TEST #51642  
\*LER = 47.0  
•AEC = \$5.10

#### HSS-10192-FR (Coated Lamp)



#### Cone of Light\*

| Ft. | FC    | Dia. |
|-----|-------|------|
| 6   | 107.9 | 6.2  |
| 8   | 60.7  | 8.3  |
| 10  | 38.9  | 10.4 |
| 12  | 27.0  | 12.4 |
| 14  | 19.8  | 14.5 |
| 16  | 15.2  | 16.6 |

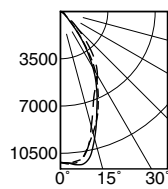
|    | CANDLEPOWER DISTRIBUTION |      |      |       |       |
|----|--------------------------|------|------|-------|-------|
|    | 0.0                      | 45.0 | 90.0 | 135.0 | 180.0 |
| 0  | 3886                     | 3886 | 3886 | 3886  | 3886  |
| 5  | 3909                     | 3927 | 3905 | 3934  | 4009  |
| 15 | 3596                     | 3813 | 4107 | 3738  | 3587  |
| 25 | 2451                     | 3516 | 3212 | 3448  | 2425  |
| 35 | 1363                     | 2030 | 1840 | 2040  | 1236  |
| 45 | 505                      | 929  | 714  | 900   | 399   |
| 55 | 211                      | 319  | 251  | 308   | 180   |
| 65 | 125                      | 120  | 115  | 117   | 94    |
| 75 | 56                       | 48   | 53   | 42    | 38    |
| 85 | 0                        | 0    | 0    | 0     | 0     |
| 90 | 0                        | 0    | 0    | 0     | 0     |

- 0° S/MH 0.9
- 90° S/MH 1.1
- 180° S/MH 0.9

EFFIC: 64.6%

ITL TEST #51639  
\*LER = 36.6  
•AEC = \$6.55

#### HSS-13193-FR (Clear Lamp)



#### Cone of Light\*

| Ft. | FC    | Dia. |
|-----|-------|------|
| 6   | 310.5 | 4.9  |
| 8   | 174.7 | 6.6  |
| 10  | 111.8 | 8.2  |
| 12  | 77.6  | 9.9  |
| 14  | 57.0  | 11.5 |
| 16  | 43.7  | 13.1 |

|    | CANDLEPOWER DISTRIBUTION |       |       |       |       |
|----|--------------------------|-------|-------|-------|-------|
|    | 0.0                      | 22.5  | 45.0  | 67.5  | 90.0  |
| 0  | 11179                    | 11179 | 11179 | 11179 | 11179 |
| 5  | 11185                    | 11246 | 11277 | 11400 | 11369 |
| 15 | 9306                     | 9157  | 8806  | 9523  | 9738  |
| 25 | 6574                     | 6800  | 6154  | 6730  | 6328  |
| 35 | 3436                     | 4598  | 4467  | 4480  | 3226  |
| 45 | 976                      | 1495  | 1866  | 1428  | 865   |
| 55 | 384                      | 420   | 501   | 451   | 395   |
| 65 | 235                      | 210   | 185   | 228   | 248   |
| 75 | 111                      | 92    | 74    | 92    | 123   |
| 85 | 0                        | 0     | 0     | 0     | 0     |
| 90 | 0                        | 0     | 0     | 0     | 0     |

- 0° S/MH 0.8
- 45° S/MH 0.8
- 90° S/MH 0.8

EFFIC: 53.2%

ITL TEST #51641  
\*LER = 45.7  
•AEC = \$5.25

\* LER (Luminaire Efficacy Rating) = Luminaire Effic. x Total Lamp Lumens x Ballast Factor / Input Watts

• AEC = Annual Energy Cost per 1000 lumens (based on 3000 hours use @ \$0.08 KWH).

## SUBMITTAL DATA

## APPROVAL STAMP

JOB NAME

TYPE

WATTAGE

VOLTAGE

CATALOG NUMBER