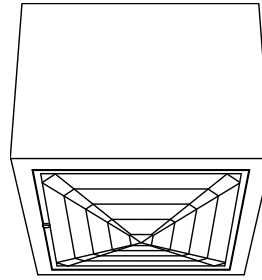


Surface Lensed E-Lamp Downlights: 50 to 150 Watt



10" 100W **HSS-10186**
13" 150W **HSS-13187**

Features

Lamp

- Designed for medium base metal halide E-lamps. See chart below for available wattages.
- See Option -43 and chart below for lower wattage or HPS availability.

Socket

- Vertical. Pulse rated.
- Nickel-plated brass screw shell. Silicone leads. Glazed porcelain.

Reflector

- GlasSurfaced™ clear specular aluminum.

Trim Assembly

- UV absorbing tempered prismatic shock resisting spread Kirlin lens.
- Rustfree die-formed door and captive thumb screw(s). Concealed hinges.

- Beveled cast aluminum frame tooled to ensure close fit with door. White acrylic finish.

Ballast Assembly: Specify Voltage

- WhisperPack™ fully encapsulated 180°C rated HPF pulse start ballast.
- Class H, high reactance for 120 volt, linear reactor for 277 volt.
- Capacitor and ignitor supplied.
- Dimming (-39) and electronic (-96) ballasts available. See Options.
- Cool, quiet, long-life. Silicone leads.

Fuse

- Fused primary. Renewable. Not for 480 volt.

Housing

- Tempered, rigid rustproof aluminum: Exceeds 1000 hour ASTM 5% salt spray test.

- Cool: Dissipates heat across entire surface.
- No visible housing hardware.

Installation

- Center point mounting with snug fit to ceiling. Mounting hardware furnished.
- Indoor or outdoor for covered ceiling use. (See Option -89)
- Collar for mounting beneath surface outlet box available. (Option -80)
- Pendant mount available. (Option -PM)
- Wall bracket mount available. (Option -WB)

UL, C-UL (Canada) Listings

- Wet, damp or dry locations, covered ceilings. (See Option -89)

Three Year Limited Warranty

- Complete standard fixture, including ballast.

Wattage Availability

Catalog No.	Lamp/Base	Standard Wattage		Option -43: Lower Wattage		Max. Standby Wattage (-49-65-66-LS)
		Pulse MH	-24 (HPS)	Pulse MH	-24 (HPS)	
HSS-10186	ED-17/Med	100	100	50-70	35-70	100
HSS-13187	ED-17/Med	150	150	50-125	35-100	100

Options

Sources and Ballasts

- 24 HPS ballast instead. See wattage chart above for available wattages. Specify voltage.
- 39 Remote (10' max.) electronic dimming ballast instead, for pulse start metal halide. Consult factory for wattage and voltage availability.
- 96 Remote (15' max.) electronic MH ballast instead. Consult factory for internal mounting.

Wattage and Voltage

- 43 Lower wattage: See Option -43 chart above for available lower wattages. Specify voltage.
- 120 120 volt, 60 Hz. ballast.
- 277 277 volt, 60 Hz. ballast.
- 347 347 volt, 60 Hz. ballast. Consult factory for dimming or electronic.
- 97 Other voltage ballast. Consult factory.

Relays, Standbys, Lamps (See Chart)

- 49 Extra circuit DCB socket. Do not energize simultaneously with main source. Also see -LS.
- 65 Electronic standby system and DCB socket. Following HID outage, provides immediate light until HID restrikes. Also see -66 and -LS.

- 66 Electronic time delay standby system and DCB socket. Following outage, provides light until HID reaches 70% output. Also see Option -LS.
- LP With lamp. Specify source, wattage, color temperature, and clear or coated. (3700°K standard for metal halide)
- LS With T-4 DCB tungsten halogen standby lamp. Use only with Options -49, -65 or -66.

Lenses and Trims

- 15 Prismatic C#73 flat glass lens instead.
- 26 Tamperproof trim. One key / ten fixtures. See -27.
- 27 Clear 1/4" tempered glass beneath tempered prismatic C#73 flat glass lens for vandal resistance. Also see Option -26.
- 46 Gasket between trim and lens.
- DG Drop Guard with tempered flat prismatic glass. Galvanized steel. White acrylic finish.
- DH Drop Holophane tempered lens instead for HSS-131-87 only.
- TC Teflon coated safety lens; retains glass particles in event of breakage.

Luminaire (Housing) Finishes

- 35 Natural Aluminum enameled luminaire finish.
- 36 Gold enameled luminaire finish instead.

- 37 Dark Bronze enameled luminaire finish instead.
- 38 Black enameled luminaire finish instead.
- 94 Custom color luminaire finish. Consult factory.

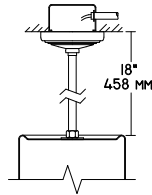
Mounting Options

- 54 Safety cable through pendant stem. 12" longer than specified stem length. Anchored to fixture. Use with Option -PM.
- 80 2" white extension collar for surface outlet box. Also see Option -89.
- 87 Custom -PM length. Specify up to 4 feet or consult factory for longer lengths with couplers.
- 88 Swivel canopy for sloped ceilings up to 45°. Earthquake rated. Use with Option -PM.
- 89 Sealed top feature prevents moisture and insect intrusion from above in outdoor or high humidity areas. Must add to Options -80, -PM or -WB for Wet Label listing.
- PM Pendant mount instead. 3/8" T.S. x 18" standard. Also see Options -54, -87, -88, -89.
- WB Wall bracket mount instead. Also see Option -89.

Other Options

- 99 Special modification. Consult factory.

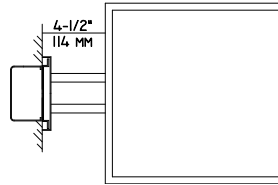
HSS-10186 HSS-13187



Representative Views:

(Right) With optional wall bracket (Option -WB)

(Left) With optional pendant mount (Option -PM)



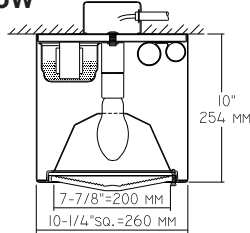
Cone of Light Key

- Ft.** Distance from fixture
- FC** Footcandles (average)
- Dia.** Circle of light at 50% of FC
- * Dia. (in ft.) shown is where FC value is half the FC at nadir.

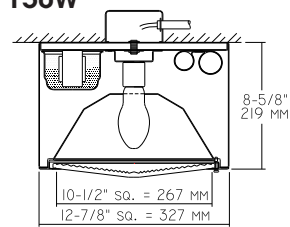
C.U. (Coefficients of Utilization) Tables are available on request. Please contact your Kirlin representative.

LIMITED WARRANTY: CATALOGED KIRLIN FIXTURES ARE WARRANTED FREE OF DEFECTS IN WORKMANSHIP OR MATERIAL FOR THREE YEARS FROM DATE OF PURCHASE. INSTALLED TO N.E.C. IN NORMAL USE. Manufacturer at its option will replace or repair such fixture or refund the purchase price on presentation of a copy of the original purchase order and invoice. This warranty does not cover damage to the fixture caused by misuse, abuse of the fixture, improper installation, or repair, or modification of the fixture without prior written authorization from the manufacturer will render the warranty void.

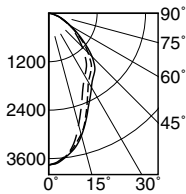
HSS-10186 100W



HSS-13187 150W



HSS-10186 (Clear Lamp)



Cone of Light*

Ft.	FC	Dia.
6	104.4	4.7
8	58.7	6.2
10	37.6	7.8
12	26.1	9.3
14	19.2	10.9
16	14.7	12.4

- 0° S/MH 0.9
- 45° S/MH 0.8
- 90° S/MH 0.9

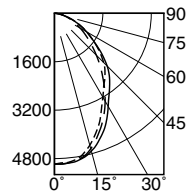
	CANDLEPOWER DISTRIBUTION				
	0.0	22.5	45.0	67.5	90.0
0	3758	3758	3758	3758	3758
5	3643	3634	3624	3650	3660
15	3102	2978	2862	2993	3137
25	2278	2168	2015	2191	2394
35	1807	1698	1629	1794	1926
45	1378	1194	1172	1279	1521
55	824	666	754	708	882
65	400	348	443	373	438
75	156	150	205	163	174
85	29	34	44	35	33
90	3	3	3	3	3

EFFIC: 65.4%

ITL TEST #38196

*LER = 40.9 •AEC = \$5.86

HSS-13187 (Clear Lamp)



Cone of Light*

Ft.	FC	Dia.
6	138.4	6.3
8	77.8	8.4
10	49.8	10.5
12	34.6	12.6
14	25.4	14.7
16	19.5	16.8

- 0° S/MH 1.0
- 45° S/MH 1.0
- 90° S/MH 1.1

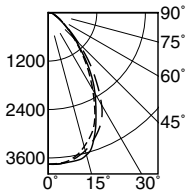
	CANDLEPOWER DISTRIBUTION				
	0.0	22.5	45.0	67.5	90.0
0	4982	4982	4982	4982	4982
5	4950	4978	4965	4970	4973
15	4513	4572	4632	4684	4712
25	3639	3770	3818	3953	4020
35	2852	2924	2852	2967	3162
45	2296	2253	1958	2133	2463
55	1565	1490	1259	1371	1565
65	930	846	751	818	922
75	405	382	357	393	397
85	79	87	92	92	79
90	8	20	20	23	16

EFFIC: 71.8%

ITL TEST #61861

*LER = 53.6 •AEC = \$4.48

HSS-10186-15 (Clear Lamp)



Cone of Light*

Ft.	FC	Dia.
6	104.3	5.9
8	58.7	7.9
10	37.6	9.9
12	26.1	11.9
14	19.2	13.9
16	14.7	15.8

- 0° S/MH 1.0
- 45° S/MH 1.1
- 90° S/MH 1.0

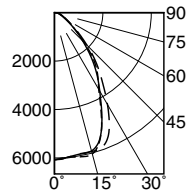
	CANDLEPOWER DISTRIBUTION				
	0.0	22.5	45.0	67.5	90.0
0	3756	3756	3756	3756	3756
5	3738	3754	3754	3762	3752
15	3434	3463	3540	3603	3650
25	2728	2858	3059	2978	2792
35	1710	1847	2065	2023	1827
45	899	991	1043	1074	937
55	468	501	472	542	438
65	227	241	251	250	218
75	122	129	140	131	132
85	45	50	49	52	44
90	0	0	0	0	0

EFFIC: 65.4%

ITL TEST #38195

*LER = 40.9 •AEC = \$5.86

HSS-13187-15 (Clear Lamp)



Cone of Light*

Ft.	FC	Dia.
6	168.37	6.4
8	94.9	8.5
10	60.7	10.6
12	42.2	12.7
14	31.0	14.8
16	23.7	17.0

- 0° S/MH 1.0
- 45° S/MH 1.1
- 90° S/MH 1.0

	CANDLEPOWER DISTRIBUTION				
	0.0	22.5	45.0	67.5	90.0
0	6073	6073	6073	6073	6073
5	6015	6038	6007	6010	5999
15	6038	6030	5935	5903	5911
25	4568	4973	5343	4902	4632
35	3107	3270	3428	3237	3027
45	1724	1903	1895	1815	1652
55	818	878	866	950	762
65	421	433	433	461	357
75	230	227	247	219	214
85	64	84	87	87	64
90	0	0	0	0	0

EFFIC: 70.5%

ITL TEST #61862

*LER = 52.6 •AEC = \$4.56

* LER (Luminaire Efficacy Rating) = Luminaire Effic. x Total Lamp Lumens x Ballast Factor / Input Watts

• AEC = Annual Energy Cost per 1000 lumens (based on 3000 hours use @ \$0.08 KWH).

SUBMITTAL DATA

APPROVAL STAMP

JOB NAME

TYPE

WATTAGE

VOLTAGE

CATALOG NUMBER