

Surface Lensed E-Lamp "Pulse Start" Regressed Downlights: 150 to 400 Watt

22" 400W **HSR-22136**

Features

Lamp

- Designed for mogul base metal halide ED-37 lamp. See chart below for standard and optional wattages.
- See Option -43 and chart below for lower wattage or HPS availability.

Socket

- Horizontal. Mogul base. Pulse rated.
- Nickel-plated brass screw shell. Silicone leads. Glazed porcelain.

Reflector

- Specular Alzak® aluminum.

Trim Assembly

- Seamless tapered smooth all white regressed. Self-flanged trim.
- UV absorbing tempered prismatic low brightness C#73 flat glass lens.

- Optional trims and lenses available.

Ballast Assembly: Specify Voltage

- WhisperPack™ fully encapsulated 180°C rated HPF pulse start ballast.
- 150 watt: Class H, high reactance for 120V and Options -65, -66; linear reactor for 277V.
- 175-400 watt: Super CWA for 120V and Options -65, -66, -HL; Class H, linear reactor for 277V.
- Capacitor and ignitor supplied.
- Dimming (-39) and electronic (-96) ballasts available. See Options.
- Cool, quiet, long-life. Silicone leads.

Fuse

- Fused primary. Renewable. Aids servicing.

Housing

- White acrylic enameled aluminum.

- No visible seam or cylinder hardware.
- Cool: Dissipates heat across entire surface.
- Rustproof: Exceeds 1000 hour ASTM 5% salt spray test.

Installation

- Center point mounting for snug fit to ceiling. Mounting hardware furnished.
- Surface J-box mount available. (Option -80)
- Pendant or wall bracket mount available. (See Options -PM, -WB)
- Indoor or outdoor for covered ceiling use. (See Options -QM, -89)

UL, C-UL (Canada) Listings

- Wet, damp or dry locations, covered ceilings. (See Options -QM, -89)

Three Year Limited Warranty

- Complete standard fixture, including ballast.

Wattage Availability

Catalog No.	Lamp/Base	Standard Wattage		Option -43: Lower Wattage		Max. Standby Wattage (-49-65-66-LS)
		Pulse MH	-24 (HPS)	Pulse MH	-24 (HPS)	
HSR-22136	ED-37/Mog	400	400	150-350	150-250	250

Options

Sources and Ballasts

- 24 HPS ballast instead. See wattage chart above for available wattages. Specify voltage.
- 39 Remote (10' max.) electronic dimming ballast instead, for pulse start metal halide. Consult factory for wattage and voltage availability.
- 96 Remote (15' max.) electronic MH ballast. Consult factory for availability in 175W or above, or for internal mounting.

Wattage and Voltage

- 43 Lower wattage: See Option -43 chart above for available lower wattages. Specify voltage.
- 120 120 volt, 60 Hz. ballast.
- 277 277 volt, 60 Hz. ballast.
- 347 347 volt, 60 Hz. ballast. Consult factory for dimming or electronic.
- 97 Other voltage ballast. Consult factory.

Relays, Standbys, Lamps (See Chart)

- 49 Extra circuit DCB socket. Do not energize simultaneously with main source. Also see -LS.

- 65 Electronic standby system and DCB socket. Following HID outage, provides immediate light until HID restrikes. Also see -66 and -LS.
- 66 Electronic time delay standby system and DCB socket. Following outage, provides light until HID reaches 70% output. Also see Option -LS.
- HL Hi-Lo wiring modification, for use with external relay systems. 175 watt or above. CWA ballast only. Specify system.
- LP With lamp. Specify source, wattage, color temperature, and clear or coated. (3700°K standard for metal halide)
- LS With T-4 DCB tungsten halogen standby lamp. Use only with Options -49, -65 or -66.

Lenses and Trims

- 27 Clear 1/4" tempered glass beneath tempered prismatic C#73 flat glass lens for impact resistance.
- 45 Gasket between trim and housing.
- 46 Gasket between trim and lens.
- 94 Custom color trim assembly. Consult factory.

Luminaire (Housing) Finishes

- 35 Natural Aluminum enameled luminaire finish instead.
- 36 Gold enameled luminaire finish instead.

- 37 Dark Bronze enameled luminaire finish instead.
- 38 Black enameled luminaire finish instead.
- 94 Custom color luminaire finish. Consult factory.

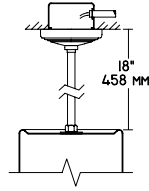
Mounting Options

- 54 Safety cable through pendant stem. 12" longer than specified stem length. Anchored to fixture. Use with Option -PM.
- 87 Custom -PM length. Specify up to 4 feet or consult factory for longer lengths with couplers.
- 88 Swivel canopy for sloped ceilings up to 45°. Earthquake rated. Use with Option -PM.
- 89 Sealed top feature prevents moisture and insect intrusion from above in outdoor or high humidity areas. Use with Option -PM or -WB.
- PM Pendant mount instead. 3/8" T.S. x 18" standard. Also see Options -54, -87, -88, -89.
- WB Wall bracket mount instead for HSR-14135 only. Also see Option -89.

Other Options

- 99 Special modification. Consult factory.

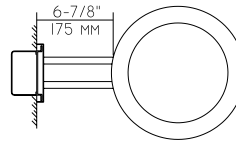
HSR-22136



Representative Views:

(Right) With optional
wall bracket
(Option -WB)

(Left) With optional pendant mount (Option -PM)



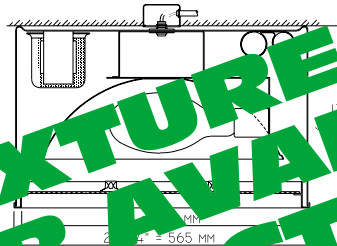
Cone of Light Key

Ft. Distance from fixture
FC Footcandles (average)
Dia. Circle of light at 50% of FC

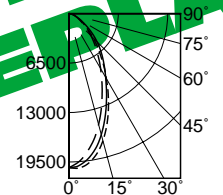
* Dia. (in ft.) shown is where FC value is half the FC at nadir.

C.U. (Coefficients of Utilization) Tables
are available on request. Please
contact your Kirlin representative.

HSR-22136 400W



HSR-22136 (Coated Lamp)



— — —	0° S/MH	0.9
————	90° S/MH	0.8
— — —	180° S/MH	0.8

Cone of Light*

Ft.	FC	Dia.
10	202.6	8.2
15	90.1	12.3
20	50.7	16.4
25	32.4	20.5
30	22.5	24.6
35S	16.5	28.7

EFFIC: 65.1%

ITL TEST #51637
LER = 51.0 AEC = \$4.70

CANDLEPOWER DISTRIBUTION					
	0.0	45.0	90.0	135.0	180.0
0	26263	20263	20263	20263	20263
5	17291	20034	19806	19554	19207
15	12729	16908	16465	15735	15088
25	12286	11999	11723	10992	10322
35	7735	7668	8023	7376	6658
45	4502	4861	5233	4778	4071
55	2419	2623	2814	2662	2180
65	1222	1282	1366	1305	1173
75	695	646	659	611	575
85	168	144	156	132	96
90	0	0	0	0	0

* **LER (Luminaire Efficacy Rating)** = $\frac{\text{Luminaire Effic.} \times \text{Total Lamp Lumens} \times \text{Ballast Factor}}{\text{Input Watts}}$

- **AEC = Annual Energy Cost per 1000 lumens (based on 3000 hours use @ \$0.08 KWH).**

SUBMITTAL DATA

APPROVAL STAMP

JOB NAME

TYPE

WATTAGE

VOLTAGE

CATALOG NUMBER

LIMITED WARRANTY: CATALOGED KILN FIXTURES ARE WARRANTED FREE OF DEFECTS IN WORKMANSHIP OR MATERIAL FOR THREE YEARS FROM DATE OF PURCHASE, INSTALLED TON E.G., IN NORMAL USE. Manufacturer at his option will replace defective or unusable kiln fixtures, or refund the purchase price, at the manufacturer's expense, if the kiln fixture is found to be defective within the warranty period. This warranty is limited to the kiln fixture as sold and does not cover damage caused by misuse, neglect, accident, or fire. This warranty is subject to the buyer in place of all other warranties expressed or implied. Seller does not warrant as to merchantability or fitness for a particular use, nor will any oral statement constitute a warranty or demand this specific warranty. A written copy of this warranty is provided with the kiln fixture. Repairs, replacement, or modification of the fixture without authorization from the manufacturer voids the warranty.

PSMET HALIDE
REV/MAY 2010