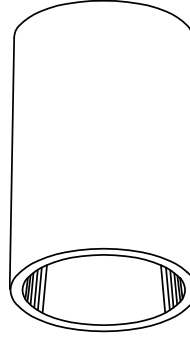


Surface Lensed T-6 Bi-Pin Ellipsoidal and Parabolic Downlights: 39 to 150 Watt



9" 150W **HSR-09123**
9" 150W **HSR-09124**

Features

Lamp

- Designed for T-6 bi-pin metal halide lamps. See chart below for standard and optional wattages.
- See Option -43 and chart below for lower wattage.

Socket

- Vertical. G12 bi-pin. Pulse rated.
- Porcelain body. Silicone leads.

Reflectors

- Upper: Ellipsoidal or parabolic specular Alzak® aluminum.
- Lower: Low brightness parabolic specular Alzak aluminum, self-flanged.

Lens

- UV absorbing tempered MicroLux glass mounted to upper reflector. Also see Options.

Ballast Assembly: Specify Voltage

- Core and coil ballast only.
- Class H, high reactance for 120 volt and Options -65, -66; linear reactor for 277 volt.
- Capacitor and ignitor supplied.
- Dimming (-39) and electronic (-96) ballasts available. See Options.
- Cool, quiet, long-life. Silicone leads.

Fuse

- Fused primary. Renewable. Aids servicing.

Housing

- White acrylic enameled aluminum. Flare style includes interlocking flare trim ring.
- No visible seam or cylinder hardware.
- Cool: Dissipates heat across entire surface area.

- Rustproof: Exceeds 1000 hour ASTM 5% salt spray test.

Installation

- Center point mounting for snug fit to ceiling. Mounting hardware furnished.
- QuickConnect mounting system available (Option -QM).
- Surface J-box mount available. (Option -80)
- Pendant or wall bracket mount available. (See Options -PM, -WB)
- Indoor or outdoor for covered ceiling use. (See Options -QM, -89)

UL, C-UL (Canada) Listings

- Wet, damp or dry locations, covered ceilings. (See Options -QM, -89)

Three Year Limited Warranty

- Complete standard fixture, including ballast.

Wattage Availability

Catalog No.	Lamp/Base	Standard Wattage Pulse MH	Option -43: Lower Wattage Pulse MH	Max. Standby Wattage (-49-65-66-LS)
HSR-09123	T-6/G12 bi-pin	150	39-70	100
HSR-09124	T-6/G12 bi-pin	150	39-70	100

Options

Sources and Ballasts

- 39 Remote (10' max.) electronic dimming ballast instead, for pulse start metal halide. Consult factory for wattage and voltage availability.
- 96 Remote (15' max.) electronic MH ballast instead. Consult factory for internal mounting.

Wattage and Voltage

- 43 Lower wattage: See Option -43 chart above for available lower wattages. Specify voltage.
- 120 120 volt, 60 Hz. ballast.
- 277 277 volt, 60 Hz. ballast.
- 347 347 volt, 60 Hz. ballast. Consult factory for dimming or electronic.
- 97 Other voltage ballast. Consult factory.

Relays, Standbys, Lamps (See Chart)

- 49 Extra circuit DCB socket. Do not energize simultaneously with main source. Also see -LS.
- 65 Electronic standby system and DCB socket. Following HID outage, provides immediate light until HID restrikes. Also see -66 and -LS.
- 66 Electronic time delay standby system and DCB socket. Following outage, provides light until HID reaches 70% output. Also see Option -LS.
- LP With lamp. Specify wattage and color temperature. (3000°K standard for T-6 MH)

- LS With T-4 DCB tungsten halogen standby lamp. Use only with Options -49, -65 or -66.

Reflectors and Trims (Self-Flanged)

- 16 Champagne Gold specular Alzak lower cone. (CP x .95)
- 30 All White lower cone. (CP x .95)
- 31 White flange (only) on lower cone.
- 63 Dune specular Alzak lower cone. (CP x .93)
- 69 Wheat specular Alzak lower cone. (CP x .92)
- 70 SoftTex Clear etched lower cone. (CP x .92)
- 71 SoftTex Dune etched lower cone. (CP x .89)
- 72 Black specular Alzak lower cone. (CP x .77)
- 77 SoftTex Pewter etched lower cone. (CP x .92)
- 90 SoftTex Champagne Gold etched lower cone. (CP x .90)
- 91 SoftTex Wheat etched lower cone. (CP x .88)
- 92 Umber specular Alzak lower cone. (CP x .83)
- 93 Pewter specular Alzak lower cone. (CP x .88)
- 94 Custom color lower cone. Consult factory.
- OG OptiGroove black tapered aluminum lower cone. White trim. (CP x .75)

Lenses

- 15 Prismatic C#73 flat glass lens instead.
- 28 UV absorbing clear tempered glass instead.

Luminaire (Housing) Finishes

- 35 Natural Aluminum enameled luminaire finish instead.

- 36 Gold enameled luminaire finish instead.
- 37 Dark Bronze enameled luminaire finish instead.
- 38 Black enameled luminaire finish instead.
- 94 Custom color luminaire finish. Consult factory.

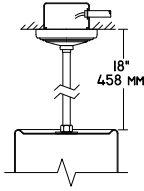
Mounting Options

- 54 Safety cable through pendant stem. 12" longer than specified stem length. Anchored to fixture. Use with Option -PM.
- 80 2" concealment collar for mounting luminaire beneath surface outlet box. 1/2" T.S. KO's. Also see Option -89.
- 87 Custom -PM length. Specify up to 4 feet or consult factory for longer lengths with couplers.
- 88 Swivel canopy for sloped ceilings up to 45°. Earthquake rated. Use with Option -PM.
- 89 Sealed top feature prevents moisture and insect intrusion from above in outdoor or high humidity areas. Must add to Options -80, -PM or -WB for Wet Label listing.
- PM Pendant mount instead. 3/8" T.S. x 18" standard. Also see Options -54, -87, -88, -89.
- QM QuickConnect mount, for indoor (damp or dry) use only. Housing swings aside for easy wiring, then pivots and locks to matte black collar.
- WB Wall bracket mount instead. Also see Option -89.

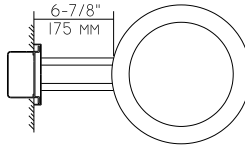
Other Options

- 99 Special modification. Consult factory.

HSR-09123 HSR-09124

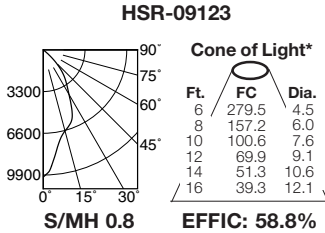
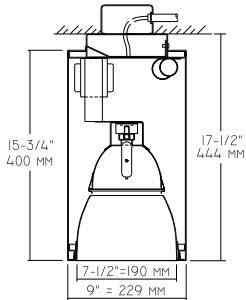


Representative Views:
(Right) With optional wall bracket (Option -WB)
(Left) With optional pendant mount (Option -PM)



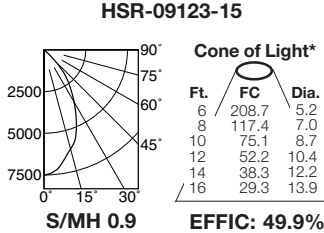
Cone of Light Key
Ft. Distance from fixture
FC Footcandles (average)
Dia. Circle of light at 50% of FC
 * Dia. (in ft.) shown is where FC value is half the FC at nadir.
C.U. (Coefficients of Utilization)
 Tables are available on request.
 Please contact your Kirlin representative.

HSR-09123 150W



ITL TEST #52128
LER = 42.3 AEC = \$5.68

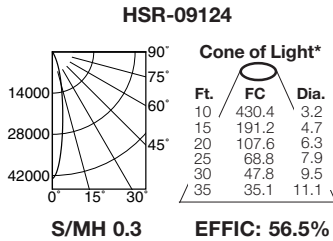
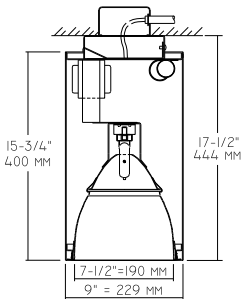
	CANDLEPOWER DISTRIBUTION				
	0.0	22.5	45.0	67.5	90.0
0	10062	10062	10062	10062	10062
5	8868	8868	8868	8868	8868
15	6642	6642	6642	6642	6642
25	5391	5391	5391	5391	5391
35	3166	3166	3166	3166	3166
45	1404	1404	1404	1404	1404
55	26	26	26	26	26
65	13	13	13	13	13
75	0	0	0	0	0
85	0	0	0	0	0
90	0	0	0	0	0



ITL TEST #51927
LER = 35.9 AEC = \$6.69

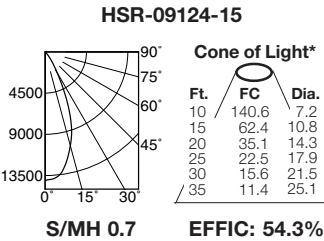
	CANDLEPOWER DISTRIBUTION				
	0.0	22.5	45.0	67.5	90.0
0	7513	7513	7513	7513	7513
5	7293	7293	7293	7293	7293
15	6153	6153	6153	6153	6153
25	4565	4565	4565	4565	4565
35	2734	2734	2734	2734	2734
45	951	951	951	951	951
55	12	12	12	12	12
65	0	0	0	0	0
75	0	0	0	0	0
85	0	0	0	0	0
90	0	0	0	0	0

HSR-09124 150W



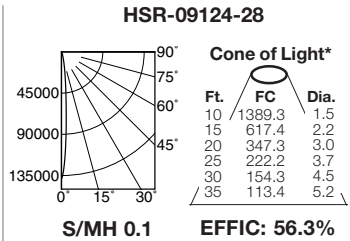
ITL TEST #51367
LER = 40.6 AEC = \$5.91

	CANDLEPOWER DISTRIBUTION				
	0.0	22.5	45.0	67.5	90.0
0	43043	43043	43043	43043	43043
5	33575	33575	33575	33575	33575
15	11441	11441	11441	11441	11441
25	3165	3165	3165	3165	3165
35	515	515	515	515	515
45	99	99	99	99	99
55	0	0	0	0	0
65	0	0	0	0	0
75	0	0	0	0	0
85	0	0	0	0	0
90	0	0	0	0	0



ITL TEST #51366
LER = 39.0 AEC = \$6.15

	CANDLEPOWER DISTRIBUTION				
	0.0	22.5	45.0	67.5	90.0
0	14056	14056	14056	14056	14056
5	13762	13762	13762	13762	13762
15	10600	10600	10600	10600	10600
25	5164	5164	5164	5164	5164
35	1294	1294	1294	1294	1294
45	203	203	203	203	203
55	15	15	15	15	15
65	0	0	0	0	0
75	0	0	0	0	0
85	0	0	0	0	0
90	0	0	0	0	0



ITL TEST #51365
LER = 40.5 AEC = \$5.93

	CANDLEPOWER DISTRIBUTION				
	0.0	22.5	45.0	67.5	90.0
0	13893	13893	13893	13893	13893
5	5851	5851	5851	5851	5851
15	769	769	769	769	769
25	227	227	227	227	227
35	15	15	15	15	15
45	0	0	0	0	0
55	0	0	0	0	0
65	0	0	0	0	0
75	0	0	0	0	0
85	0	0	0	0	0
90	0	0	0	0	0

MULTIPLY CANDELA BY 10.0

ALL FIXTURE DRAWINGS SHOWN WITH OPTION -QM

* LER (Luminaire Efficacy Rating) = Luminaire Effic. x Total Lamp Lumens x Ballast Factor / Input Watts

* AEC = Annual Energy Cost per 1000 lumens (based on 3000 hours use @ \$0.08 KWH).

SUBMITTAL DATA

APPROVAL STAMP

JOB NAME

TYPE

WATTAGE

VOLTAGE

CATALOG NUMBER

LIMITED WARRANTY: CATALOGUED KIRLIN FIXTURES ARE WARRANTED FREE OF DEFECTS IN WORKMANSHIP OR MATERIAL FOR THREE YEARS FROM DATE OF PURCHASE. INSTALLATION TO N.E.C. IN NORMAL USE. Manufacturer at his option will replace or repair such fixture or refund the purchase price on presentation of proof of purchase and defective fixture at the office of manufacturer within three years of original shipment. Liability of manufacturer is limited to the foregoing, and manufacturer shall not be liable for any other damages, direct or indirect, sustained or suffered by or for any person in connection with the purchase, use, or installation of the fixture without prior written authorization from the manufacturer. Manufacturer will render the warranty void if repair, or modification of the fixture without prior written authorization from the manufacturer.