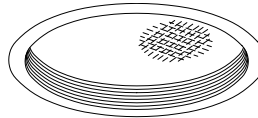


### Recessed Lensed E-Lamp Vandal Resistant Downlights: 50 to 250 Watt



8" 150W **HRV-08075**  
11" 250W **HRV-11076**

### Features

#### Lamp

- Designed for metal halide E-lamps. See chart for standard and optional wattages.
- See Option -43 and chart for lower wattage or HPS availability.

#### Socket

- Horizontal. Pulse rated. Glazed porcelain.
- Nickel-plated brass screw shell. Silicone leads.

#### Reflector

- Specular Alzak® aluminum.

#### Trim Assembly

- Tamper-resistant, seamless tapered black OptiGroove with self-flanged white trim.
- Flush tamperproof hex screws with center pin secure trim to captive nuts in housing.
- Continuous ring, four screws secure lens.
- Lens combines UV absorbing tempered prismatic C#73 lens overlay with 1/4" clear tempered glass below.

#### Ballast Assembly: Specify Voltage

- WhisperPack™ fully encapsulated 180°C rated HPF pulse start ballast.
- 50-150 watt: Class H, high reactance for 120 volt and Options -65, -66; linear reactor for 277 volt.
- 175-250 watt: Super CWA for 120 volt and Options -65, -66, -HL; Class H, linear reactor for 277 volt.
- Capacitor and ignitor supplied.
- Dimming (-39) and electronic (-96) ballasts available. See Options.
- Cool, quiet, long life. Silicone leads.
- Visible and easily serviced in all ceilings including dry wall.

#### Fuse

- Fused primary. Renewable. Not for 480 volt.

#### Housing

- Acrylic enameled aluminum.
- Cool: Dissipates heat across entire surface area. Ventilated.

- Rustproof: Exceeds 1000 hour ASTM 5% salt spray test.
- Entire luminaire serviced through removable trim assembly.
- Built-in plaster frame.

#### Outlet Box

- Prewired 14 GA (NEC) galvanized steel, UL listed, with removable insulated cover.
- 1/2" and 3/4" knockouts.

#### Installation

- 27" galvanized hanger bars supplied (2).
- Fully adjustable universal mounting brackets supplied (2).
- Recesses indoor or outdoor in covered locations.

#### UL C-UL (Canada) Listings

- Wet, damp or dry locations, covered ceilings.
- Through-branch circuit conductors (6 #12).

#### Three Year Limited Warranty

- Complete standard fixture, including ballast.

#### Thermal Protection

- Per current NEC.

### Wattage / Lamp Availability and Cut-out Dimensions

Catalog No.	Lamp/Base	Standard Wattage Pulse MH	Wattage -24 (HPS)	Option -43: Lower Wattage Pulse MH	Wattage -24 (HPS)	Max. Standby Wattage (-49-65-66-LS)	Ceiling Cut-Out Diameter
HRV-08075	ED-17/Med	150	150	50-125	35-100	100	10.38"
HRV-11076	ED-28/Mog	250	250	150-200	150	150	12.25"

### Options

#### Sources and Ballasts

- 24 HPS ballast instead. See wattage chart above for available wattages. Specify voltage.
- 39 Electronic dimming ballast instead, for pulse start metal halide. Consult factory for wattage and voltage availability.
- 96 Regulating electronic MH ballast instead. Consult factory for availability in 175W or above.

#### Wattage and Voltage

- 43 Lower wattage: See Option -43 chart above for available lower wattages. Specify voltage.
- 120 120 volt, 60 Hz. ballast.
- 277 277 volt, 60 Hz. ballast.
- 347 347 volt, 60 Hz. ballast. Consult factory for dimming or electronic.
- 97 Other voltage ballast instead. Consult factory.

#### Relays, Standbys, Lamps (See Chart)

- 49 Extra circuit DCB socket. Do not energize

- simultaneously with main source. Also see -LS.
- 65 Electronic standby system and DCB socket. Following HID outage, provides immediate light until HID restrikes. Also see -66 and -LS.
- 66 Electronic time delay standby system and DCB socket. Following outage, provides light until HID reaches 70% output. Also see Option -LS.
- HL Hi-Le wiring modification for use with external relay systems (by others). 175W or above. CWA ballast only. Specify system.
- LP With lamp. Specify source, wattage, color temperature, and clear or coated. (3700°K standard for metal halide)
- LS With T-4 DCB tungsten halogen standby lamp. Use only with Options -49, -65 or -66.

#### Lenses and Trims

- 32 Trim extender. Broadens trim flange O.D. by 1" to cover larger ceiling opening.
- 40 White grooveless flare trim assembly instead.
- 45 Gasket between trim and ceiling.
- 46 Gasket between trim and lens.

- 94 Custom color trim assembly. Consult factory.
- FR Fresnel tempered lens instead. Not available for HRV-11076.
- HO Holophane concave lens instead. Not available for HRV-11076.

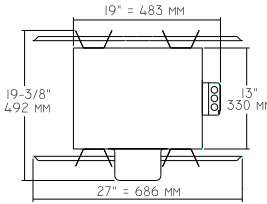
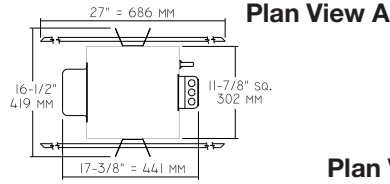
#### Mounting Options

- 79 Extension collar for up to 2" thick ceilings.
- 85 Ceiling Panel; with recessed fixture hole. Lays-in 2' x 2' grid.

#### Other Options

- 99 Special modification. Consult factory.
- TA Top access modification for servicing from above ceiling. Not available for HRV-08075.

**HRV-08075**  
**HRV-11076**

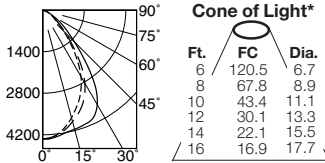


**Cone of Light Key**  
**Ft.** Distance from fixture  
**FC** Footcandles (average)  
**Dia.** Circle of light at 50% of FC  
 \* Dia. (in ft.) shown is where FC value is half the FC at nadir.

**C.U. (Coefficients of Utilization) Tables are available on request. Please contact your Kirlin representative.**

**HRV-08075 150W**

**HRV-08075 (Coated Lamp)**



--- 0° S/MH 1.0  
 --- 90° S/MH 1.2  
 --- 180° S/MH 1.0

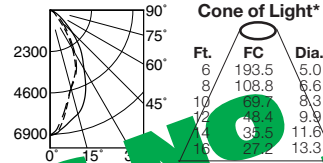
**EFFIC: 55.3%**

**ITL TEST #51631**

**\*LER = 34.1 \*AEC = \$7.04**

CANDLEPOWER DISTRIBUTION					
	0.0	45.0	90.0	135.0	180.0
0	4338	4338	4338	4338	4338
5	4273	4256	4313	4292	4271
15	3755	3906	4157	4025	3888
25	3027	3402	4014	3603	3234
35	2010	2475	3060	2516	2244
45	1007	1227	1521	1292	1080
55	458	354	285	214	188
65	251	251	261	269	254
75	66	77	83	74	85
85	0	0	0	0	0
90	0	0	0	0	0

**HRV-08075-FR (Coated Lamp)**



--- 0° S/MH 0.7  
 --- 90° S/MH 0.9  
 --- 180° S/MH 0.7

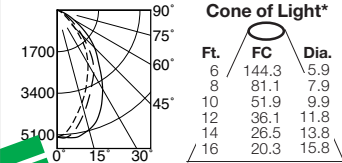
**EFFIC: 60.9%**

**ITL TEST #51633**

**\*LER = 37.5 \*AEC = \$6.40**

CANDLEPOWER DISTRIBUTION					
	0.0	45.0	90.0	135.0	180.0
0	6966	6966	6966	6966	6966
5	6927	6857	6880	6494	6278
15	4475	5147	5976	5271	4502
25	3618	4005	4685	4072	3468
35	1710	2385	3104	2516	1977
45	576	1242	1787	1346	971
55	393	376	762	623	447
65	144	240	306	257	186
75	80	72	84	72	57
85	0	0	0	0	0
90	0	0	0	0	0

**HRV-08075-HO (Coated Lamp)**



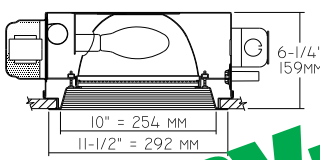
--- 0° S/MH 0.8  
 --- 90° S/MH 1.1  
 --- 180° S/MH 0.9

**EFFIC: 63.8%**

**ITL TEST #51633**

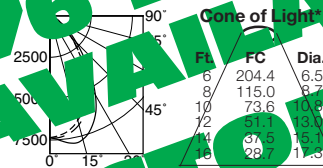
**\*LER = 39.3 \*AEC = \$6.10**

CANDLEPOWER DISTRIBUTION					
	0.0	45.0	90.0	135.0	180.0
0	5193	5193	5193	5193	5193
5	4944	5016	5237	5265	5192
15	3927	4442	5063	4857	4314
25	2945	3552	4301	3893	3371
35	2087	2486	3119	2727	2555
45	1020	1488	2174	1784	1437
55	387	770	1200	956	677
65	161	330	492	401	267
75	54	69	81	72	54
85	0	0	0	0	0
90	0	0	0	0	0



**HRV-11076 250W**

**HRV-11076 (Coated Lamp)**



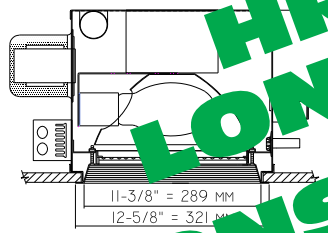
--- 0° S/MH 1.0  
 --- 90° S/MH 1.1  
 --- 180° S/MH 1.0

**EFFIC: 52.0%**

**ITL TEST #51391**

**\*LER = 35.8 \*AEC = \$6.70**

CANDLEPOWER DISTRIBUTION					
	0.0	45.0	90.0	135.0	180.0
0	7358	7358	7358	7358	7358
5	7223	7383	7570	7471	7357
15	6529	7243	7724	7317	6810
25	5301	6082	6543	6102	5581
35	3484	3999	4320	3932	3591
45	1869	2036	2250	1969	1883
55	868	1028	1061	995	854
65	414	460	468	441	414
75	121	154	174	147	133
85	6	6	6	6	6
90	0	0	0	0	0



\* **LER (Luminaire Efficacy Rating) = Luminaire Effic. x Total Lamp Lumens x Ballast Factor / Input Watts**

\* **AEC = Annual Energy Cost per 1000 lumens (based on 3000 hours use @ \$0.08 KWH).**

SUBMITTAL DATA

APPROVAL STAMP

JOB NAME

TYPE

WATTAGE

VOLTAGE

CATALOG NUMBER

LIMITED WARRANTY: CATALOGUED KIRLIN FIXTURES ARE WARRANTED FREE OF DEFECTS IN WORKMANSHIP OR MATERIAL FOR THREE YEARS FROM DATE OF PURCHASE. INSTALLED TO N.E.C. IN NORMAL USE. Manufacturer at his option will replace or repair such fixture or refund the purchase price on presentation of proof of purchase and defective fixture at the office of manufacturer within three years of original shipment. Liability of manufacturer is limited to the foregoing, and manufacturer shall not be liable for any other damages, direct or indirect, sustained or suffered by purchaser or third party. This warranty is applicable only to the original purchaser of the fixture. This warranty is void where prohibited by law. This warranty is void where prohibited by law. This warranty is void where prohibited by law. This warranty is void where prohibited by law. This warranty is void where prohibited by law.