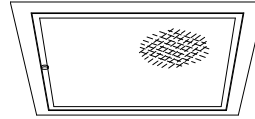


Recessed Lensed E-Lamp Offset Beam: 50 to 400 Watt



12"	150W	HRS-12176
17"	400W	HRS-17177

Features

Lamp

- Designed for base metal halide E-lamps. See chart below for standard and optional wattages.
- See Option -43 and chart below for lower wattage or HPS availability.

Socket

- Offset horizontal. Pulse rated.
- Nickel-plated brass screw shell. Silicone leads. Glazed porcelain.

Reflector

- GlasSurfaced™ specular aluminum.

Trim Assembly

- UV absorbing tempered low brightness prismatic flat glass.
- For drop polycarbonate lens, see Option -42.
- Rustfree die-formed door and captive thumb screw(s). Concealed hinges.
- Beveled cast aluminum frame tooled to ensure close fit with door. White acrylic finish.

Ballast Assembly: Specify Voltage

- WhisperPack™ fully encapsulated 180°C rated HPF pulse start ballast.
- 50-150 watt: Class H, high reactance for 120 volt, linear reactor for 277 volt.
- 200-400 watt: Super CWA for 120 volt and Options -65, -66, -HL; Class H, linear reactor for 277 volt.
- Capacitor and ignitor supplied.
- Dimming (-39) and electronic (-96) ballasts available. See Options.
- Cool, quiet, long-life. Silicone leads.
- Visible and easily serviced in all ceilings.

Fuse

- Fused primary. Renewable. Not for 480 volt.

Housing

- Acrylic enameled aluminum.
- Cool: Dissipates heat across entire surface area. Ventilated.
- Rustproof. Exceeds 1000 hour ASTM 5% salt spray test.

- Entire luminaire serviced from below through removable reflector.
- Built-in plaster frame.

Outlet Box

- Prewired 14 GA (NEC) galvanized steel, UL listed; with removable insulated cover.
- 1/2" and 3/4" knockouts.

Installation

- 27" galvanized hanger bars supplied (2).
- Fully adjustable universal mounting brackets supplied (2).
- Recesses in door or outdoor in covered locations.

UL, C-UL (Canada) Listings

- Wet, damp or dry locations, covered ceilings.
- Through-branch circuit conductors (S #12).

Three Year Limited Warranty

- Complete standard fixture, including ballast.

Thermal Protection

- Per current NEC.

Wattage Availability and Cut-out Dimensions

Catalog No.	Lamp/Base	Standard Wattage		Option -43: Lower Wattage		Max. Standby Wattage (-49-65-66-LS)	Ceiling Cut-Out
		Pulse MH	-24 (HPS)	Pulse MH	-24 (HPS)		
HRS-12176	ED-17/Med	150	150	50-125	35-100	100	13.5" Sq.
HRS-17177	ED-37/Mog	400	400	150-350	50-250	250	19.5" Sq.

Options

Sources and Ballasts

- 24 HPS ballast instead. See wattage chart above for available wattages. Specify voltage.
- 39 Electronic dimming ballast instead, for pulse start metal halide. Consult factory for wattage and voltage availability.
- 96 Regulating electronic MH ballast instead. Consult factory for availability in 200W or above.

Wattage and Voltage

- 43 Lower wattage: See Option -43 chart above for available lower wattages. Specify voltage.
- 120 120 volt, 60 Hz. ballast.
- 277 277 volt 60, Hz. ballast.
- 347 347 volt, 60 Hz. ballast. Consult factory for dimming or electronic.
- 97 Other voltage ballast. Consult factory.

Relays, Standbys, Lamps (See Chart)

- 49 Extra circuit DCB socket. Do not energize simultaneously with main source. Also see -LS.

- 65 Electronic standby system and DCB socket. Following HID outage, provides immediate light until HID restrikes. Also see -66 and -LS.
- 66 Electronic time delay standby system and DCB socket. Following outage, provides light until HID reaches 70% output. Also see Option -LS.
- HL Hi-Lo wiring modification for use with external relay systems (by others) 175 watt or above. For HRS-17177. Specify system.
- LP With lamp. Specify source, wattage, color temperature, and clear or coated. (3700°K standard for metal halide)
- LS With T-4 DCB tungsten halogen standby lamp. Use only with Options -49, -65 or -66.

Lenses and Trims

- 26 Tamperproof recessed hex, center pin, button door screw with key. One key per ten fixtures. Also see Option -27.
- 27 Clear 1/4" tempered glass beneath tempered prismatic C#73 flat glass lens for added vandal resistance. Also see Option -26.

- 32 Trim extender. Broadens trim flange by 1".
- 42 Drop polycarbonate prismatic lens.
- 45 Gasket between trim and ceiling.
- 46 Gasket between trim and lens.
- 94 Custom color frame finish. Consult factory.
- DG Drop Guard with tempered flat prismatic glass. Galvanized steel. White acrylic finish.
- TC Teflon coated safety lens; retains glass particles in event of breakage.

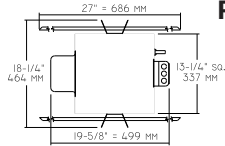
Mounting Options

- 85 Ceiling Panel; with recessed fixture hole. Lays-in 2' x 2' grid. White.

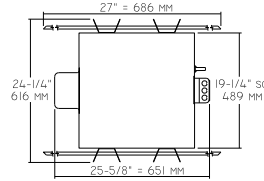
Other Options

- 99 Special modification. Consult factory.
- TA Top access; for servicing from above for HRS-17177 only.

HRS-12176
HRS-17177



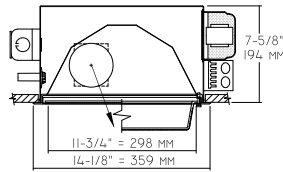
Plan View A



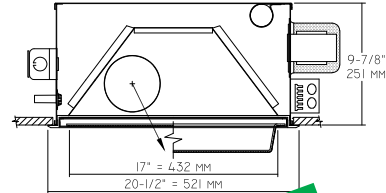
Plan View B

C.U. (Coefficients of Utilization)
Tables are available on request.
Please contact your Kirlin representative.

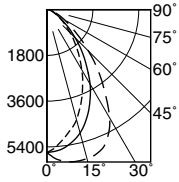
HRS-12176 150W (Plan View A)



HRS-17177 400W (Plan View B)



HRS-12176 (Coated Lamp)

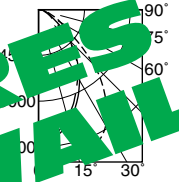


OFFSET DISTRIBUTION

CANDLEPOWER DISTRIBUTION					
	0.0	45.0	90.0	135.0	180.0
0° S/MH 0.8	0	5621	5621	5621	5621
90° S/MH 1.0	5	6304	5351	5647	5650
180° S/MH 1.2	15	4484	4592	3020	5710
	25	3307	3543	3967	2014
	35	2183	2124	2703	3814
	45	1286	1429	1567	2237
	55	686	717	755	1031
	65	338	384	377	512
	75	180	200	222	271
	85	59	65	70	93
	90	0	0	0	0

EFFIC: 72.7%
ITL TEST #61853
*LER = 48.2
*AEC = \$4.98

HRS-17177 (Coated Lamp)

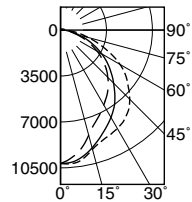


OFFSET DISTRIBUTION

CANDLEPOWER DISTRIBUTION					
	0.0	45.0	90.0	135.0	180.0
0° S/MH 1.4	0	13323	13323	13323	13323
90° S/MH 1.0	5	13736	13305	12946	12682
180° S/MH 0.9	15	14406	13018	11415	10625
	25	14119	12036	9237	8016
	35	11683	9548	6772	5910
	45	7634	6078	4307	3709
	55	3350	3231	2273	1986
	65	1794	1507	1148	1077
	75	957	861	718	623
	85	311	263	287	215
	90	0	0	0	0

EFFIC: 64.2%
ITL TEST #51630
*LER = 50.3
*AEC = \$4.77

HRS-17177-42 (Coated Lamp)



OFFSET DISTRIBUTION

CANDLEPOWER DISTRIBUTION					
	0.0	45.0	90.0	135.0	180.0
0° S/MH 1.3	0	10166	10166	10166	10166
90° S/MH 1.1	5	10207	10207	10099	9873
180° S/MH 1.0	15	9410	9496	9291	8742
	25	8850	8613	8205	7418
	35	8420	7881	7127	6277
	45	7451	7031	5717	5319
	55	6072	5781	4350	4113
	65	4199	4199	2885	2810
	75	2197	2498	1486	1551
	85	818	980	496	570
	90	431	517	258	301

EFFIC: 72.0%
ITL TEST #52262
*LER = 56.5
*AEC = \$4.25

* LER (Luminaire Efficacy Rating) = $\frac{\text{Luminaire Effic.} \times \text{Total Lamp Lumens} \times \text{Ballast Factor}}{\text{Input Watts}}$

* AEC = Annual Energy Cost per 1000 lumens (based on 3000 hours use @ \$0.08 KWH).

SUBMITTAL DATA

APPROVAL STAMP

JOB NAME

TYPE

WATTAGE

VOLTAGE

CATALOG NUMBER

THESE FIXTURES ARE NOT FOR REPLACEMENT CONSULT FACTORY FOR REPLACEMENT

LIMITED WARRANTY: CATALOGED KIRLIN FIXTURES ARE WARRANTED FREE OF DEFECTS IN WORKMANSHIP OR MATERIAL FOR THREE YEARS FROM DATE OF PURCHASE. INSTALLED TO N.E.C. IN NORMAL USE. Manufacturer at his option will replace or repair such fixture or refund the purchase price on presentation of proof of purchase and defective fixture at the office of manufacturer within three years of original shipment. Liability of manufacturer is limited to the foregoing, and manufacturer shall not be liable for any other damages, direct or indirect, sustained or suffered by or for the purchaser or any other person. This warranty is void where prohibited by law. No other warranty, express or implied, shall apply to this fixture. Additional use, abuse of the fixture, improper installation, or repair, or modification of the fixture without prior written authorization from the manufacturer will render the warranty void.