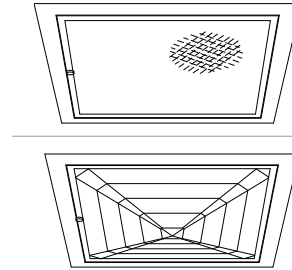


### Recessed Lensed E-Lamp Downlights: 50 to 250 Watt



12" 150W **HRS-12172**

11" 250W **HRS-11173**

### Features

#### Lamp

- Designed for base metal halide E-lamps. See chart below for standard and optional wattages.
- See Option -43 and chart below for lower wattage or HPS availability.

#### Socket

- HRS-12172: Horizontal.
- HRS-11173: Vertical.
- Nickel-plated brass screw shell. Silicone leads. Glazed porcelain. Pulse rated.

#### Reflector

- GlasSurfaced™ specular aluminum.

#### Trim Assembly

- HRS-12172: UV absorbing tempered prismatic glass lens.
- HRS-11173: UV absorbing tempered prismatic spread Kirlin lens.
- For drop polycarbonate lens, see Option -42.
- Rustfree die-formed door and captive thumb screw(s). Concealed hinges.

- Beveled cast aluminum frame tooled to ensure close fit with door. White acrylic finish.
- Ballast Assembly: Specify Voltage**
- WhisperPack™ fully encapsulated 180°C rated HPF pulse start ballast.
- 50-150 watt: Class H, high reactance for 120 volt, linear reactor for 277 volt.
- 200-250 watt: Super CWA for 120 volt and Options -65, -66, -HL; Class H, linear reactor for 277 volt.
- Capacitor and ignitor supplied.
- Dimming (-39) and electronic (-96) ballasts available. See Options.
- Cool, quiet, long-life. Silicone leads.
- Visible and easily serviced in all ceilings.
- Fuse**
- Fused primary. Renewable. Not for 480 volt.
- Housing**
- Acrylic enameled aluminum.
- Cool: Dissipates heat across entire surface area. Ventilated.

- Rustproof: Exceeds 1000 hour ASTM 5% salt spray test.
- Entire luminaire serviced from below through removable reflector.
- Built-in plaster frame.

#### Outlet Box

- Prewired 14 GA (NEC) galvanized steel, UL listed; with removable insulated cover.
- 1/2" and 3/4" knockouts.

#### Installation

- 27" galvanized hanger bars supplied (2).
- Fully adjustable universal mounting brackets supplied (2).
- Recesses indoor or outdoor in covered locations.

#### UL, C-UL (Canada) Listings

- Wet, damp or dry locations, covered ceilings.
- Through-branch circuit conductors (6 #12).

#### Three Year Limited Warranty

- Complete standard fixture, including ballast.

#### Thermal Protection

- Per current NEC.

### Wattage Availability and Cut-Out Dimensions

Catalog No.	Lamp/Base	Standard Wattage		Option -43: Lower Wattage		Max. Standby Wattage (-49-65-66-LS)	Ceiling Cut-Out
		PulseMH	-24 (HPS)	PulseMH	-24 (HPS)		
HRS-12172	ED-28/Mog	150	150	70-100	50-100	100	13.5" Sq.
HRS-11173	ED-28/Mog	250	250	150-200	50-150	150	12.25" Sq.

### Options

#### Sources and Ballasts

- 24 HPS ballast instead. See wattage chart above for available wattages. Specify voltage.
- 39 Electronic dimming ballast instead, for pulse start metal halide. Consult factory for wattage and voltage availability.
- 96 Regulating electronic MH ballast instead. Consult factory for availability.

#### Wattage and Voltage

- 43 Lower wattage: See Option -43 chart above for available lower wattages. Specify voltage.
- 120 120 volt, 60 Hz. ballast.
- 277 277 volt 60, Hz. ballast.
- 347 347 volt, 60 Hz. ballast. Consult factory for dimming or electronic.
- 97 Other voltage ballast. Consult factory.

#### Relays, Standbys, Lamps (See Chart)

- 49 Extra circuit DCB socket. Do not energize simultaneously with main source. Also see -LS.
- 65 Electronic standby system and DCB socket. Following HID outage, provides immediate light until HID restrikes. Also see -66 and -LS.
- 66 Electronic time delay standby system and DCB socket. Following outage, provides light until HID reaches 70% output. Also see Option -LS.
- LP With lamp. Specify source, wattage, color temperature, and clear or coated. (3700°K standard for metal halide)
- LS With T-4 DCB tungsten halogen standby lamp. Use only with Options -49, -65 or -66.

#### Lenses and Trims

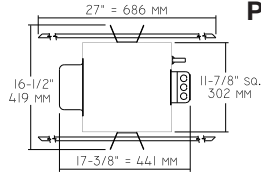
- 15 Prismatic flat glass lens instead for HRS-11173.
- 26 Tamperproof recessed hex, center pin, button door screw with key. One key per ten fixtures. Also see Option -27.
- 27 Clear 1/4" tempered glass beneath tempered prismatic flat glass lens for added vandal resistance. Also see Option -26.

- 32 Trim extender. Broadens trim flange by 1".
- 42 Drop polycarbonate prismatic lens. Not available for HRS-11173.
- 45 Gasket between trim and ceiling.
- 46 Gasket between trim and lens.
- 94 Custom color frame finish. Consult factory.
- DG Drop Guard with tempered flat prismatic glass. Galvanized steel. White acrylic finish.
- DH Drop Holophane lens instead for HRS-11173 only.
- TC Teflon coated safety lens; retains glass particles in event of breakage.

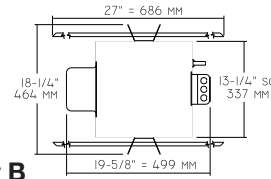
#### Other Options

- 99 Special modification. Consult factory.

### HRS-12172 HRS-11173



Plan View A



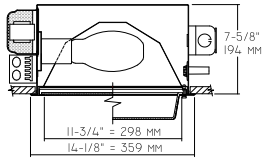
Plan View B

- Cone of Light Key**
- Ft.** Distance from fixture
  - FC** Footcandles (average)
  - Dia.** Circle of light at 50% of FC
  - \* Dia. (in ft.) shown is where FC value is half the FC at nadir.

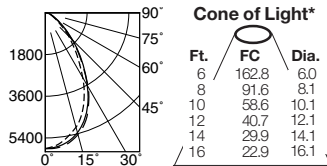
**C.U. (Coefficients of Utilization) Tables** are available on request. Please contact your Kirlin representative.

**LIMITED WARRANTY:** CATALOGUED KIRLIN FIXTURES ARE WARRANTED FREE OF DEFECTS, IN WORKMANSHIP OR MATERIAL FOR THREE YEARS FROM DATE OF PURCHASE. INSTALLLED TO N.E.C., IN NORMAL USE. Manufacturer at his option will replace or repair said fixture or refund the purchase price on presentation of proof of purchase and defective fixture at the office of manufacturer within three years of original shipment. Liability of manufacturer is limited to the foregoing, and manufacturer shall not be liable for any other damages, direct or indirect, sustained or suffered or for repair, or modification of the fixture without prior written authorization from the manufacturer. Will render the warranty void.

### HRS-12172 150W (Plan View B)



#### HRS-12172 (Coated Lamp)

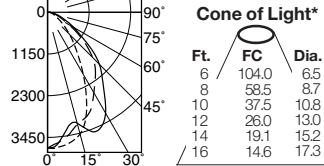


- 0° S/MH 0.9 EFFIC: 71.9%
- 90° S/MH 1.0
- 180° S/MH 1.0

ITL TEST #61852  
\*LER = 47.7 \*AEC = \$5.03

	CANDLEPOWER DISTRIBUTION				
	0.0	45.0	90.0	135.0	180.0
0	5859	5859	5859	5859	5859
5	5727	5749	5804	5844	5848
15	5111	5193	5355	5442	5440
25	3962	4216	4330	4537	4403
35	2498	2918	2894	3219	2833
45	1417	1640	1652	1829	1599
55	669	787	839	863	769
65	335	403	409	448	376
75	205	219	208	238	225
85	67	74	66	82	70
90	0	0	0	0	0

#### HRS-12172-42 (Coated Lamp)

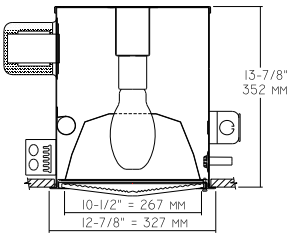


- 0° S/MH 0.9 EFFIC: 59.0%
- 45° S/MH 1.1
- 90° S/MH 1.2

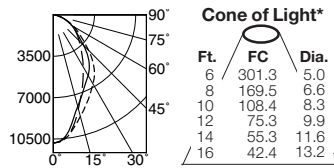
ITL TEST #61868  
\*LER = 39.1 \*AEC = \$6.14

	CANDLEPOWER DISTRIBUTION				
	0.0	22.5	45.0	67.5	90.0
0	3743	3743	3743	3743	3743
5	3728	3722	3600	3617	3597
15	3476	3424	3199	3126	3165
25	2534	2715	2884	3355	3498
35	1492	1748	2295	2803	2737
45	855	1064	1768	2121	2034
55	453	643	1021	1123	1136
65	244	354	464	546	597
75	143	183	217	272	303
85	68	91	106	110	98
90	51	70	82	86	79

### HRS-11173 250W (Plan View A)



#### HRS-11173 (Clear Lamp)

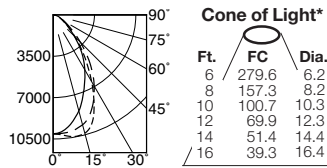


- 0° S/MH 0.9 EFFIC: 66.1%
- 45° S/MH 0.8
- 90° S/MH 0.8

ITL TEST #51621  
\*LER = 53.2 \*AEC = \$4.51

	CANDLEPOWER DISTRIBUTION				
	0.0	22.5	45.0	67.5	90.0
0	10845	10845	10845	10845	10845
5	10584	10558	10498	10456	10430
15	8883	8598	8230	8068	8027
25	7395	6662	5979	6346	6438
35	6101	5073	4289	5317	5338
45	4238	3473	3101	4013	3627
55	2607	2124	2246	2415	2272
65	1507	1283	1421	1339	1385
75	601	566	646	571	581
85	112	112	152	122	112
90	21	21	35	21	21

#### HRS-11173-15 (Clear Lamp)



- 0° S/MH 1.1 EFFIC: 61.1%
- 45° S/MH 0.9
- 90° S/MH 0.9

ITL TEST #51622  
\*LER = 49.2 \*AEC = \$4.88

	CANDLEPOWER DISTRIBUTION				
	0.0	22.5	45.0	67.5	90.0
0	10065	10065	10065	10065	10065
5	10227	10196	10044	9911	9840
15	10360	10187	9627	8852	8424
25	8190	8282	8073	7126	6326
35	4951	5312	5720	5099	4411
45	2607	2862	3244	2965	2506
55	1273	1390	1574	1507	1334
65	693	718	784	759	744
75	377	387	412	417	417
85	92	117	127	133	122
90	0	0	0	0	0

\* LER (Luminaire Efficacy Rating) = Luminaire Effic. x Total Lamp Lumens x Ballast Factor / Input Watts

\* AEC = Annual Energy Cost per 1000 lumens (based on 3000 hours use @ \$0.08 KWH).

## SUBMITTAL DATA

## APPROVAL STAMP

JOB NAME

TYPE

WATTAGE

VOLTAGE

CATALOG NUMBER