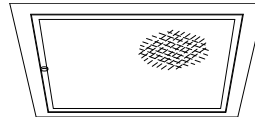


Recessed Lensed E-Lamp Offset: 50 to 200 Watt



8" 100W **HRS-08170**
11" 150W **HRS-11171**

Features

Lamp

- Designed for medium base metal halide E-lamps. See chart below for standard and optional wattages.
- See Option -43 and chart below for lower wattage or HPS availability.

Socket

- Medium base. Pulse rated. Glazed porcelain.
- Offset horizontal.
- Nickel-plated brass screw shell. Silicone leads.

Reflector

- GlasSurfaced™ multi-faceted specular aluminum.

Trim Assembly

- UV absorbing tempered low brightness prismatic flat glass.
- Rustfree die-formed door and captive thumb screw(s). Concealed hinges.

- Beveled cast aluminum frame tooled to ensure close fit with door. White acrylic finish.

Ballast Assembly: Specify Voltage

- WhisperPack™ fully encapsulated 180°C rated HPF pulse start ballast.
- 50-150 watt: Class H, high reactance for 120 volt, linear reactor for 277 volt.
- Capacitor and ignitor supplied.
- Dimming (-39) and electronic (-96) ballasts available. See Options.
- Cool, quiet, long-life. Silicone leads.
- Visible and easily serviced in all ceilings.

Fuse

- Fused primary. Renewable. Not for 480 volt.

Housing

- Acrylic enameled aluminum. Ventilated.
- Cool: Dissipates heat across entire surface.
- Rustproof: Exceeds 1000 hour ASTM 5% salt spray test.

- Entire luminaire serviced from below through removable reflector.
- Built-in plaster frame.

Outlet Box

- Prewired 14 GA (NEC) galvanized steel, UL listed; with removable insulated cover.
- 1/2" and 3/4" knockouts.

Installation

- 27" galvanized hanger bars supplied (2).
- Fully adjustable universal mounting brackets supplied (2).
- Recesses indoor or outdoor in covered locations.

UL, C-UL (Canada) Listings

- Wet, damp or dry locations, covered ceilings.
- Through-branch circuit conductors (6 #12).

Three Year Limited Warranty

- Complete standard fixture, including ballast.

Thermal Protection

- Per current NEC.

Wattage Availability and Cut-out Dimensions

Catalog No.	Lamp/Base	Standard Wattage		Option -43: Lower Wattage		Max. Standby Wattage (-49-65-66-LS)	Ceiling Cut-Out
		Pulse MH	-24 (HPS)	Pulse MH	-24 (HPS)		
HRS-08170	ED-17/Med	100	100	50-70	35-70	100	9.5" Sq.
HRS-11171	ED-17/Med	150	150	50-125	35-100	100	12.25" Sq.

Options

Sources and Ballasts

- 24 HPS ballast instead. See wattage chart above for available wattages. Specify voltage.
- 39 Electronic dimming ballast instead, for pulse start metal halide. Consult factory for wattage and voltage availability.
- 96 Regulating electronic MH ballast instead.

Wattage and Voltage

- 43 Lower wattage: See Option -43 chart above for available lower wattages. Specify voltage.
- 120 120 volt, 60 Hz. ballast.
- 277 277 volt, 60 Hz. ballast.
- 347 347 volt, 60 Hz. ballast. Consult factory for dimming or electronic.
- 97 Other voltage ballast. Consult factory.

Relays, Standbys, Lamps (See Chart)

- 49 Extra circuit DCB socket. Do not energize simultaneously with main source. Also see -LS.
- 65 Electronic standby system and DCB socket. Following HID outage, provides immediate light until HID restrikes. Also see -66 and -LS.
- 66 Electronic time delay standby system and DCB socket. Following outage, provides light until HID reaches 70% output. Also see Option -LS.
- LP With lamp. Specify source, wattage, color temperature, and clear or coated. (3700°K standard for metal halide)
- LS With T-4 DCB tungsten halogen standby lamp. Use only with Options -49, -65 or -66.

Lenses and Trims

- 26 Tamperproof recessed hex, center pin, button door screw with key. One key per ten fixtures. Also see Option -27.

- 27 Clear 1/4" tempered glass beneath tempered prismatic C#73 flat glass lens for added vandal resistance. Also see Option -26.
- 32 Trim extender. Broadens trim flange O.D. by 1".
- 45 Gasket between trim and ceiling.
- 46 Gasket between trim and lens.
- 94 Custom color frame finish instead. Consult factory.
- DG Drop Guard with tempered flat prismatic glass. Galvanized steel. White acrylic finish.
- DH Drop Holophane tempered lens instead. Not available for HRS-08170.

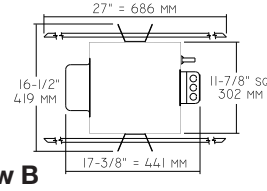
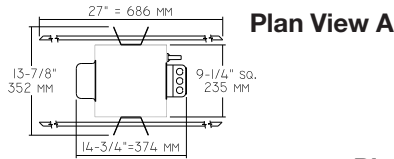
Mounting Options

- 85 Ceiling Panel; with recessed fixture hole. Lays-in 2' x 2' grid. White

Other Options

- 99 Special modification. Consult factory.

HRS-08170
HRS-11171

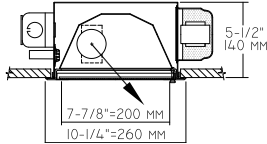


Cone of Light Key

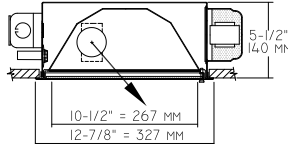
- Ft.** Distance from fixture
- FC** Footcandles (average)
- Dia.** Circle of light at 50% of FC
- * Dia. (in ft.) shown is where FC value is half the FC at nadir.

C.U. (Coefficients of Utilization)
Tables are available on request.
Please contact your Kirlin representative.

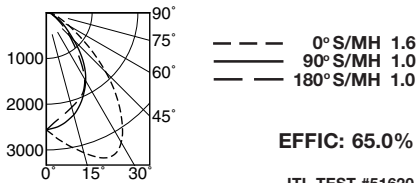
HRS-08170 100W (Plan View A)



HRS-11171 150W (Plan View B)



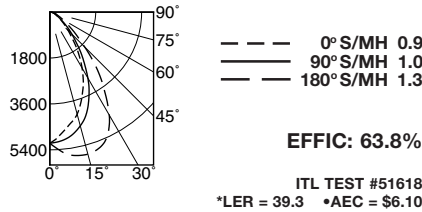
HRS-08170 (Coated Lamp)



CANDLEPOWER DISTRIBUTION					
	0.0	45.0	90.0	135.0	180.0
0	2560	2560	2560	2560	2560
5	2762	2686	2515	2413	2381
15	3168	2844	2312	2116	2139
25	3444	2877	1939	1749	1906
35	2877	2483	1457	1243	1315
45	1840	1582	848	686	721
55	854	766	463	354	366
65	383	382	238	200	193
75	207	188	121	115	115
85	77	75	41	38	41
90	0	0	0	0	0

OFFSET DISTRIBUTION

HRS-11171 (Coated Lamp)



CANDLEPOWER DISTRIBUTION					
	0.0	45.0	90.0	135.0	180.0
0	5142	5142	5142	5142	5142
5	4817	4853	5070	5362	5497
15	4142	4209	4617	5482	5766
25	3113	3268	3634	4872	5340
35	1949	2139	2297	3419	3721
45	1017	1106	1226	1817	1935
55	523	535	578	807	867
65	292	287	272	366	412
75	171	176	169	231	234
85	53	62	53	84	74
90	0	0	0	0	0

OFFSET DISTRIBUTION

* LER (Luminaire Efficacy Rating) = Luminaire Effic. x Total Lamp Lumens x Ballast Factor / Input Watts

* AEC = Annual Energy Cost per 1000 lumens (based on 3000 hours use @ \$0.08 KWH).

SUBMITTAL DATA

APPROVAL STAMP

JOB NAME
TYPE
WATTAGE VOLTAGE
CATALOG NUMBER

LIMITED WARRANTY: CATALOGED KIRLIN FIXTURES ARE WARRANTED FREE OF DEFECTS IN WORKMANSHIP OR MATERIAL FOR THREE YEARS FROM DATE OF PURCHASE. INSTALLED TO N.E.C., IN NORMAL USE. Manufacturer at his option will replace or repair such fixture or refund the purchase price on presentation of proof of purchase and defective fixture at the offices of manufacturer within three years of original shipment. Liability of manufacturer is limited to the foregoing, and manufacturer shall not be liable for any other damages, direct or indirect, sustained or suffered by the purchaser or any other party. This warranty is void where prohibited by law. No warranty is made for use of the fixture for any purpose other than that for which it is specifically designed. Any use of the fixture for any purpose other than that for which it is specifically designed constitutes a warranty or amendment to this specific warranty. Additional use, abuse of the fixture, improper installation, or repair, or modification of the fixture without prior written authorization from the manufacturer will render the warranty void.