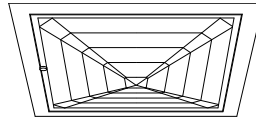


Recessed Lensed E-Lamp Downlight: 50 to 200 Watt



11" 200W **HRS-11169**

Features

Lamp

- Designed for medium base metal halide E-lamps. See chart below for standard and optional wattages.
- See Option -43 and chart below for lower wattage or HPS availability.

Socket

- Medium base. Pulse rated. Glazed porcelain.
- Vertical.
- Nickel-plated brass screw shell. Silicone leads.

Reflector

- GlasSurfaced™ multi-faceted specular aluminum.

Trim Assembly

- UV absorbing tempered prismatic shock resisting spread Kirlin lens.
- Rustfree die-formed door and captive thumb screw(s). Concealed hinges.
- Beveled cast aluminum frame tooled to ensure close fit with door. White acrylic finish.

Ballast Assembly: Specify Voltage

- WhisperPack™ fully encapsulated 180°C rated HPF pulse start ballast.
- 50-150 watt: Class H, high reactance for 120 volt, linear reactor for 277 volt.
- 175-200 watt: Super CWA for 120 volt and Options -65, -66, -HL; Class H, linear reactor for 277 volt.
- Capacitor and ignitor supplied.
- Dimming (-39) and electronic (-96) ballasts available. See Options.
- Cool, quiet, long-life. Silicone leads.
- Visible and easily serviced in all ceilings.

Fuse

- Fused primary. Renewable. Not for 480 volt.

Housing

- Acrylic enameled aluminum. Ventilated.
- Cool: Dissipates heat across entire surface.
- Rustproof: Exceeds 1000 hour ASTM 5% salt spray test.

- Entire luminaire serviced from below through removable reflector.
- Built-in plaster frame.

Outlet Box

- Prewired 14 GA (NEC) galvanized steel, UL listed; with removable insulated cover.
- 1/2" and 3/4" knockouts.

Installation

- 27" galvanized hanger bars supplied (2).
- Fully adjustable universal mounting brackets supplied (2).
- Recesses indoor or outdoor in covered locations.

UL, C-UL (Canada) Listings

- Wet, damp or dry locations, covered ceilings.
- Through-branch circuit conductors (6 #12).

Three Year Limited Warranty

- Complete standard fixture, including ballast.

Thermal Protection

- Per current NEC.

Wattage Availability and Cut-out Dimensions

Catalog No.	Lamp/Base	Standard Wattage		Option -43: Lower Wattage		Max. Standby Wattage (-49-65-66-LS)	Ceiling Cut-Out
		Pulse MH	-24 (HPS)	Pulse MH	-24 (HPS)		
HRS-11169	ED-17/Med	200	150	50-175	35-150	100	12.25" Sq.
HRS-08170	ED-17/Med	100	100	50-70	35-70	100	9.5" Sq.
HRS-11171	ED-17/Med	150	150	50-125	35-100	100	12.25" Sq.

Options

Sources and Ballasts

- 24 HPS ballast instead. See wattage chart above for available wattages. Specify voltage.
- 39 Electronic dimming ballast instead, for pulse start metal halide. Consult factory for wattage and voltage availability.
- 96 Regulating electronic MH ballast instead. Consult factory for availability in 175W or above.

Wattage and Voltage

- 43 Lower wattage: See Option -43 chart above for available lower wattages. Specify voltage.
- 120 120 volt, 60 Hz. ballast.
- 277 277 volt, 60 Hz. ballast.
- 347 347 volt, 60 Hz. ballast. Consult factory for dimming or electronic.
- 97 Other voltage ballast. Consult factory.

Relays, Standbys, Lamps (See Chart)

- 49 Extra circuit DCB socket. Do not energize simultaneously with main source. Also see -LS.
- 65 Electronic standby system and DCB socket. Following HID outage, provides immediate light until HID restrikes. Also see -66 and -LS.
- 66 Electronic time delay standby system and DCB socket. Following outage, provides light until HID reaches 70% output. Also see Option -LS.
- HL Hi-Lo wiring modification for HRS-11169 only. 175 watt or above. For use with external relay systems (by others). Specify system separately.
- LP With lamp. Specify source, wattage, color temperature, and clear or coated. (3700°K standard for metal halide)
- LS With T-4 DCB tungsten halogen standby lamp. Use only with Options -49, -65 or -66.

Lenses and Trims

- 15 Prismatic C#73 flat glass lens instead. (Standard for HRS-08170, HRS-11171)
- 26 Tamperproof recessed hex, center pin, button door screw with key. One key per ten fixtures. Also see Option -27.

- 27 Clear 1/4" tempered glass beneath tempered prismatic C#73 flat glass lens for added vandal resistance. Also see Option -26.
- 32 Trim extender. Broadens trim flange O.D. by 1".
- 45 Gasket between trim and flange.
- 46 Gasket between trim and lens.
- 94 Custom color frame finish instead. Consult factory.
- DG Drop Guard with tempered flat prismatic glass. Galvanized steel. White acrylic finish.
- DH Drop Holophane tempered lens instead. Not available for HRS-08170.

Mounting Options

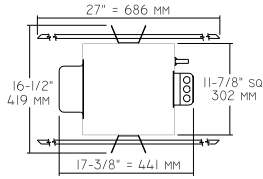
- 85 Ceiling Panel; with recessed fixture hole. Lays-in 2' x 2' grid. White

Other Options

- 99 Special modification. Consult factory.
- TA Top access modification for HRS -11169 only. For servicing from above ceiling.

HRS-11169

Plan View

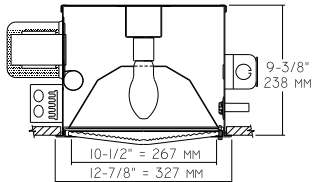


Cone of Light Key

- Ft.** Distance from fixture
- FC** Footcandles (average)
- Dia.** Circle of light at 50% of FC
- * Dia. (in ft.) shown is where FC value is half the FC at nadir.

C.U. (Coefficients of Utilization)
Tables are available on request.
Please contact your Kirlin representative.

HRS-11169 200W (Plan View B)



HRS-11169 (Clear Lamp)

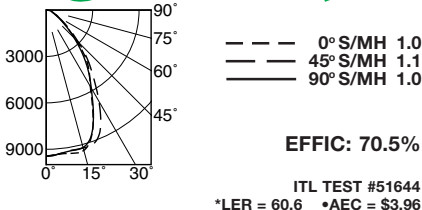


Cone of Light*

Ft.	FC	Dia.
6	215.3	6.3
8	121.1	8.4
10	77.5	10.5
12	53.8	12.6
14	39.5	14.7
16	30.3	16.8

CANDLEPOWER DISTRIBUTION					
	0.0	22.5	45.0	67.5	90.0
0	7749	7749	7749	7749	7749
5	7700	7743	7724	7731	7735
15	7020	7112	7206	7298	7391
25	5860	5865	5937	6016	6101
35	4437	4549	4637	4616	4615
45	3571	3604	3656	3718	3787
55	2835	2817	2859	2912	2975
65	2246	2216	2259	2313	2378
75	1830	1800	1853	1917	1982
85	123	186	143	143	123
90	15	31	31	36	25

HRS-11169-15 (Clear Lamp)



Cone of Light*

Ft.	FC	Dia.
6	262.4	6.4
8	147.6	8.5
10	94.5	10.6
12	65.6	12.7
14	48.2	14.8
16	36.9	17.0

CANDLEPOWER DISTRIBUTION					
	0.0	22.5	45.0	67.5	90.0
0	9447	9447	9447	9447	9447
5	9356	9393	9344	9349	9331
15	9393	9380	9232	9183	9195
25	7106	7736	8312	7626	7206
35	4833	5086	5333	5036	4708
45	2882	2960	2947	2824	2570
55	1273	1365	1347	1477	1186
65	655	673	673	717	556
75	358	353	384	340	333
85	99	130	136	136	99
90	0	0	0	0	0

* LER (Luminaire Efficacy Rating) = Luminaire Effic. x Total Lamp Lumens x Ballast Factor / Input Watts

* AEC = Annual Energy Cost per 1000 lumens (based on 3000 hours use @ \$0.08 KWH).

LIMITED WARRANTY: CATALOGED KIRLIN FIXTURES ARE WARRANTED FREE OF DEFECTS IN WORKMANSHIP OR MATERIAL FOR THREE YEARS FROM DATE OF PURCHASE. INSTALLED TO N.E.C., IN NORMAL USE. Manufacturer at his option will replace or repair such fixture or refund the purchase price on presentation of proof of purchase and defective fixture within three years of original shipment. Liability of manufacturer is limited to the foregoing, and manufacturer shall not be liable for any other damages, direct or indirect, sustained or suffered by or for the purchaser or any other person. This warranty is void where prohibited by law. No other warranty, express or implied, shall apply to this product. Kirlin Lighting Company reserves the right to modify or discontinue this warranty without prior written authorization from the manufacturer.

SUBMITTAL DATA

APPROVAL STAMP

JOB NAME

TYPE

WATTAGE

VOLTAGE

CATALOG NUMBER