

Recessed Lensed  
E-Lamp Downlight  
50 to 100 Watt



8" 100W

**HRS-08166**

# THIS PRODUCT IS NO LONGER AVAILABLE

## PLEASE CONSULT QUOTATIONS

for the best alternative.

### Features

#### Lamp

- Designed for medium base metal halide E-lamps. See chart below for standard and optional wattages.
- See Option -43 and chart below for lower wattage or HPS availability.

#### Socket

- Horizontal. Medium base. Pulse rated.
- Nickel-plated brass screw shell. Silicone leads. Glazed porcelain.

#### Reflector

- GlasSurf™ multi-faceted reflector aluminum.

#### Trim Assembly

- UV absorbing tempered prismatic shock resisting acrylic trim lens.
- Rustfree die-formed door and captive thumb screw(s). Concealed hinges.

- Reversible cast aluminum frame. Tapped to accept close fit with added acrylic finish. Ballast Assembly: Standard with ballast.
- WhisperPack™ fully encapsulated 180°C rated HPF pulse start ballast.
- Class H, high reactance for 120 volt, linear reactor for 277 volt.
- Capacitor and ignitor supplied.

- Electronic (-39 and -65) ballast.
- Cool, quiet, long-life. Silicone leads.
- Visible and easily serviced in all ceilings.

- Acrylic enameled aluminum.
- Cool. Dissipates heat across entire surface.
- Rustproof. Exceeds 1000 hour ASTM 5% salt spray test.

- Entire luminaire serviced from below through removable reflector.
- Built-in plaster frame.

#### Outlet Box

- Prewired 14 GA (NEC) galvanized steel, UL listed; with removable insulated cover.
- 1/2" and 3/4" knockouts.

#### Installation

- 27" galvanized hanger bars supplied (2).
- Fully adjustable universal mounting brackets supplied (2).
- Recesses indoor or outdoor in covered locations.

#### UL, C-UL (Canada) Listings

- Wet, damp or dry locations, covered ceilings.
- Through-brand circuit conductors (6 #12).

#### Three Year Limited Warranty

- Complete standard fixture, including ballast.

#### Thermal Protection

- Per current NEC.

### Wattage Availability and Cut-out Dimensions

Catalog No.	Lamp/Base	Standard Wattage		Option -43: Lower Wattage		Max. Standby Wattage (-49-65-66-LS)	Ceiling Cut-Out
		Pulse MH	-24 (HPS)	Pulse MH	-24 (HPS)		
HRS-08166	ED-17/Med	100	100	50-70	35-70	100	7.75" x 13.375"

### Options

#### Sources and Ballasts

- 24 HPS ballast instead. See wattage chart above for available wattages. Specify voltage.
- 39 Electronic dimming ballast instead, for pulse start metal halide. Consult factory for wattage and voltage availability.
- 96 Regulating electronic MH ballast instead.

#### Wattage and Voltage

- 43 Lower wattage: See Option -43 chart above for available lower wattages. Specify voltage.
- 120 120 volt, 60 Hz. ballast.
- 277 277 volt, 60 Hz. ballast.
- 347 347 volt, 60 Hz. ballast. Consult factory for dimming or electronic.
- 97 Other voltage ballast. Consult factory.

#### Relays, Standbys, Lamps (See Chart)

- 49 Extra circuit DCB socket. Do not energize simultaneously with main source. Also see -LS.
- 65 Electronic standby system and DCB socket. Following HID outage, provides immediate light until HID restrikes. Also see -66 and -LS.
- 66 Electronic time delay standby system and DCB socket. Following outage, provides light until HID reaches 70% output. Also see Option -LS.
- LP With lamp. Specify source, wattage, color temperature, and clear or coated. (3700°K standard for metal halide)
- LS With T-4 DCB tungsten halogen standby lamp. Use only with Options -49, -65 or -66.

#### Lenses and Trims

- 15 Prismatic C#73 flat glass lens instead.
- 26 Tamperproof recessed hex, center pin, button door screw with key. One key per ten fixtures. Also see Option -27.

- 27 Clear 1/4" tempered glass beneath tempered prismatic C#73 flat glass lens for added vandal resistance. Also see Option -26.
- 32 Trim extender. Broadens trim flange O.D. by 1".
- 45 Gasket between trim and ceiling.
- 46 Gasket between trim and lens.
- 94 Custom color frame finish instead. Consult factory.

#### Mounting Options

- 85 Ceiling Panel; with recessed fixture hole. Lays-in 2' x 2' grid. White

#### Other Options

- 99 Special modification. Consult factory.

**KIRLIN**

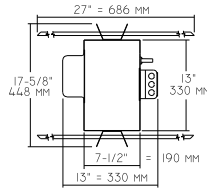
### THE KIRLIN COMPANY

3401 EAST JEFFERSON AVENUE • DETROIT, MICHIGAN 48207-4232  
(313) 259-6400 • Fax: (313) 259-9409 or (313) 259-3121 • www.kirlinlighting.com

THE KIRLIN COMPANY RESERVES THE RIGHT TO CHANGE, WITHOUT NOTICE, DETAILS OR SPECIFICATIONS IN PRODUCT DESIGN.

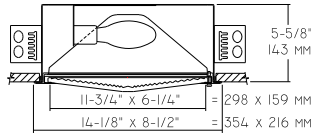
### HRS-08166

Plan View

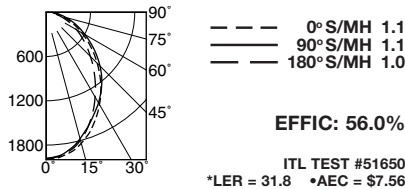


**C.U. (Coefficients of Utilization)**  
Tables are available on request.  
Please contact your Kirlin representative.

### HRS-08166 100W (Plan View A)



### HRS-08166 (Coated Lamp)

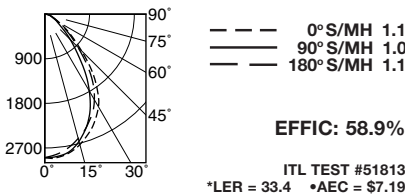


Cone of Light\*

Ft.	FC	Dia.
6	55.1	6.4
8	31.0	8.6
10	19.8	10.7
12	13.8	12.8
14	10.1	15.0
16	7.7	17.1

	CANDLEPOWER DISTRIBUTION				
	0.0	45.0	90.0	135.0	180.0
0	1982	1982	1982	1982	1982
5	1977	1963	1954	1962	1963
15	1838	1812	1774	1777	1795
25	1590	1575	1529	1474	1496
35	1293	1306	1299	1178	1160
45	978	1011	1031	900	846
55	388	709	741	631	588
65	439	442	489	393	370
75	231	228	278	202	185
85	78	79	118	70	55
90	29	35	58	31	14

### HRS-08166-15 (Coated Lamp)



Cone of Light\*

Ft.	FC	Dia.
6	80.4	6.4
8	45.2	8.5
10	29.0	10.7
12	20.1	12.8
14	14.8	14.9
16	11.3	17.1

	CANDLEPOWER DISTRIBUTION				
	0.0	45.0	90.0	135.0	180.0
0	2895	2895	2895	2895	2895
5	2903	2891	2881	2850	2835
15	2725	2750	2657	2626	2596
25	2380	2407	2153	2180	2241
35	1834	1803	1399	1568	1684
45	1043	944	723	815	936
55	515	466	348	412	457
65	229	212	185	209	217
75	122	119	105	122	128
85	32	31	26	31	32
90	0	0	0	0	0

\* LER (Luminaire Efficacy Rating) = Luminaire Effic. x Total Lamp Lumens x Ballast Factor / Input Watts

• AEC = Annual Energy Cost per 1000 lumens (based on 3000 hours use @ \$0.08 KWH).

## SUBMITTAL DATA

## APPROVAL STAMP

JOB NAME

TYPE

WATTAGE

VOLTAGE

CATALOG NUMBER

LIMITED WARRANTY - CATALOGED KIRLIN FIXTURES ARE WARRANTED FREE OF DEFECTS IN WORKMANSHIP OR MATERIAL FOR THREE YEARS FROM DATE OF PURCHASE. INSTALLED TO N.E.C. IN NORMAL USE. Manufacturer at his option will replace or repair such fixture or refund the purchase price or representation of proof of purchase and defective fixture at the office of manufacturer within three years of original shipment. Liability of manufacturer is limited to the foregoing, and manufacturer shall not be liable for any other damages, direct or indirect, sustained or suffered by purchaser or any person. This warranty is supplied to the buyer in place of all other warranties, expressed or implied. Seller does not warrant, as to merchantability or fitness for a particular use, nor will any oral statement constitute a warranty or amend this specific warranty. Abnormal use, abuse of the fixture, improper installation, or repair, or modification of the fixture without prior written authorization from the manufacturer will render the warranty void.