

Recessed Lensed
E-Lamp Downlight
50 to 200 Watt

**THIS PRODUCT
IS NO LONGER**

200W **HRS-06162**

AVAILABLE

Please consult

QUOTATIONS

for the best alternative.

Features

Lamp

- Designed for medium base metal halide E-lamps. See chart below for standard and optional wattages.
- See Option -43 and chart below for lower wattage for HPS availability.

Socket

- Vertical. Pulse rated. Glazed porcelain.
- Nickel-plated brass screw shell. Silicone leads.

Reflectors

- Upper: Bipsoidal or parabolic specular Alzak® aluminum.
- Lower: SoftTex softly etched premium aluminum. Self-flanged.

Lens

- UV absorbing tempered glass mounted to upper reflector.

Ballast Assembly: Operating Voltage

- PulseStart™ fluorescent ballast. 180° rated.
- PulseStart™ fluorescent ballast. 180° rated.
- 50-60 watt: PulseStart™ fluorescent ballast. 180° rated.
- 175-200 watt: Super CWA for 120 volt and Options -65, -66, -HL; Class H, linear reactor for 277 volt.
- Capacitor and ignitor supplied.
- PulseStart™ fluorescent ballast.
- Cool, quiet, long-life. Silicone leads.
- Visible and easily serviced in all ceilings.
- Full range of mounting options.
- Fused primary. Renewable. Hot servicing.

Housing

- Anodized, painted aluminum housing. Gasketed to absorb surface area. Ventilated.

- Rustproof: Exceeds 1000 hour ASTM 5% salt spray test.
- Entire luminaire serviced from below through removable reflector.
- Built-in plaster frame.

Outlet Box

- Prewired 14 GA (NEC) galvanized steel, UL listed; with removable insulated cover.
- 1/2" and 3/4" knockout.

Installation

- 27" galvanized hanger bars supplied (2).
- Fully adjustable universal mounting brackets supplied (2).
- Recesses indoor or outdoor in covered locations.

UL, C-UL (Canada) Listings

- Wet, damp or dry locations, covered ceilings.
- Through-branch circuit conductors (6 #12).
- **Three Year Limited Warranty**
- Complete standard fixture, including ballast.
- **UV Protection**
- Per current NEC.

Wattage Availability and Cut-Out Dimensions

Catalog No.	Lamp/Base	Standard Wattage		Option -43: Lower Wattage		Max. Standby Wattage (-49-65-66-LS)	Ceiling Cut-Out
		Pulse MH	-24 (HPS)	Pulse MH	-24 (HPS)		
HRS-06162	ED-17/Med	200	150	50-175	50-150	100	6.75" Sq.

Options

Sources and Ballasts

- 24 HPS ballast instead. See wattage chart above for available wattages. Specify voltage.
- 39 Electronic dimming ballast instead for pulse start metal halide. Consult factory for wattage and voltage availability.
- 96 Regulating electronic MH ballast instead. Consult factory for availability.

Wattage and Voltage

- 43 Lower wattage: See Option -43 chart above for available lower wattages. Specify voltage.
- 120 120 volt, 60 Hz. ballast.
- 277 277 volt, 60 Hz. ballast.
- 347 347 volt, 60 Hz. ballast. Consult factory for dimming or electronic.
- 97 Other voltage ballast. Consult factory.

Relays, Standbys, Lamps (See Chart)

- 49 Extra circuit DCB socket. Do not energize simultaneously with main source. Also see -LS.

- 65 Electronic standby system and DCB socket. Following HID outage, provides immediate light until HID strikes. Also see -66 and -LS.
- 66 Electronic time delay standby system and DCB socket. Following outage, provides light until HID reaches 70% output. Also see Option -LS.
- LP With lamp. Specify source, wattage, color temperature, and clear or coated. (3700°K standard for metal halide)
- LS With T-4 DCB tungsten halogen standby lamp. Use only with Options -49, -65 or -66.

Reflectors and Trims (Self-Flanged)

- 16 Champagne Gold specular Alzak lower reflector. (CP x 1.10)
- 30 All White lower reflector. (CP x 1.10)
- 31 White flange (only) on lower reflector.
- 32 Trim extender. Broadens trim flange O.D. by 1".
- 45 Gasket above reflector flange for HRS-06162.
- 62 Clear specular Alzak lower reflector. (CP x 1.16)
- 63 Dune specular Alzak lower reflector. (CP x 1.08)
- 69 Wheat specular Alzak lower reflector. (CP x 1.07)
- 71 SoftTex Dune etched lower reflector. (CP x .97)

- 72 Black specular Alzak lower reflector. (CP x .99)
- 77 SoftTex Pewter etched lower reflector. (CP x .92)
- 90 SoftTex Champagne Gold lower reflector. (CP x .97)
- 91 SoftTex Wheat etched lower reflector. (CP x .95)
- 92 Umber specular Alzak lower reflector. (CP x .96)
- 93 Pewter specular Alzak lower reflector. (CP x 1.02)
- 94 Custom color lower reflector instead. Consult factory.

Lenses

- 15 Prismatic C#73 flat glass lens instead.
- ML UV absorbing tempered Microlux glass instead.

Mounting Options

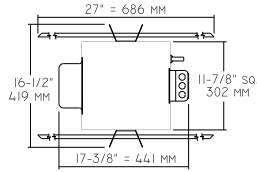
- 79 Extension collar for up to 2" thick ceilings.

Other Options

- 99 Special modification. Consult factory.
- TA Top access modification for servicing from above ceiling.

HRS-06162

Plan View

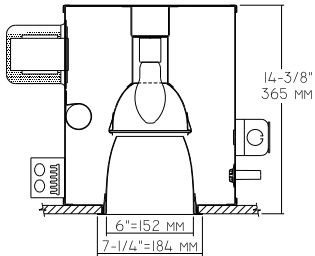


Cone of Light Key

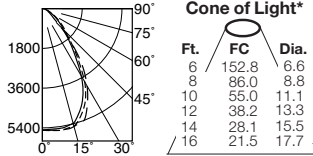
- Ft.** Distance from fixture
- FC** Footcandles (average)
- Dia.** Circle of light at 50% of FC
- * Dia. (in ft.) shown is where FC value is half the FC at nadir.

C.U. (Coefficients of Utilization) Tables are available on request. Please contact your Kirlin representative.

HRS-06162 200W



HRS-06162 (Coated Lamp)



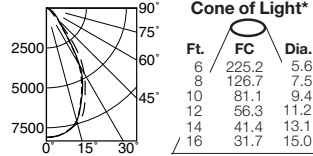
S/MH 1.0

	CANDLEPOWER DISTRIBUTION				
	0.0	22.5	45.0	67.5	90.0
EFFIC: 40.9%	0	5501	5501	5501	5501
	5	5541	5507	5529	5518
	15	5502	5507	5527	5447
	25	4600	4625	4810	4603
	35	2830	3108	3150	2891
	45	1505	1386	1170	1305
	55	861	699	471	650
	65	412	317	251	294
	75	163	125	112	118
	85	86	27	26	26
	90	0	0	0	0

ITL TEST #51807

*LER = 33.5
•AEC = \$7.17

HRS-06162-15 (Clear Lamp)



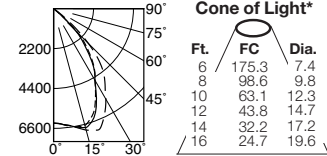
S/MH 0.9

	CANDLEPOWER DISTRIBUTION				
	0.0	22.5	45.0	67.5	90.0
EFFIC: 41.2%	0	8107	8107	8107	8107
	5	8038	8043	8038	8043
	15	7296	7357	7459	7422
	25	5192	5410	5725	5498
	35	2401	2763	3500	2828
	45	1029	927	732	932
	55	584	454	301	450
	65	297	227	167	218
	75	111	86	79	93
	85	28	19	19	19
	90	0	0	0	0

ITL TEST #51810

*LER = 35.4
•AEC = \$6.77

HRS-06162-62 (Coated Lamp)



S/MH 1.1

	CANDLEPOWER DISTRIBUTION				
	0.0	22.5	45.0	67.5	90.0
EFFIC: 49.9%	0	6312	6312	6312	6312
	5	6416	6419	6421	6426
	15	6662	6781	6929	6883
	25	5457	6169	6576	6294
	35	3866	4692	4927	4695
	45	1888	2428	2712	2233
	55	43	51	180	54
	65	14	12	8	13
	75	6	5	2	6
	85	2	1	0	1
	90	0	0	0	0

ITL TEST #52133

*LER = 40.9
•AEC = \$5.87

LIMITED WARRANTY - CATALOGED KIRLIN FIXTURES ARE WARRANTED FREE OF DEFECTS IN WORKMANSHIP OR MATERIAL FOR THREE YEARS FROM DATE OF PURCHASE. INSTALLED TO N.E.C. (NORMAL USE). Manufacturer at his option will replace or repair any fixture or fixture part found to be defective in workmanship or material within three years of original shipment. Liability of manufacturer is limited to the foregoing, and manufacturers shall not be liable for any other damages, direct or indirect, sustained or suffered by purchaser or any person. This warranty is supplied to the buyer in place of all other warranties, expressed or implied. Seller does not warrant, as to merchantability or fitness for a particular use, nor will any oral statement constitute a warranty or amend this specific warranty. Abnormal use, abuse of the fixture, improper installation, repair, or modification of the fixture without prior written authorization from the manufacturer will render the warranty void.

* LER (Luminaire Efficacy Rating) = Luminaire Effic. x Total Lamp Lumens x Ballast Factor / Input Watts

• AEC = Annual Energy Cost per 1000 lumens (based on 3000 hours use @ \$0.08 KWH).

SUBMITTAL DATA

APPROVAL STAMP

JOB NAME

TYPE

WATTAGE

VOLTAGE

CATALOG NUMBER