

Recessed Lensed F-Lamp
"Pulse Start" Downlights
150 to 400 Watt

THIS PRODUCT IS NO LONGER AVAILABLE

PLEASE CONSULT QUOTATIONS

for the best alternative.

1" 250W HRR-11067
13" 400W HRR-13069

Features

Lamp

- Designed for mogul base metal halide E-lamps. See chart below for standard and optional wattages.
- See Option -43 and chart below for lower wattage for HPS availability.

Socket

- Vertical. Pulse rated. Glazed porcelain.
- Nickel-plated brass screw shell. Silicone leads. Mogul base.

Reflector

- Specular Alzak® aluminum.

Trim Assembly

- Seamless tapered black OptiGroove with white flange. See flange trim chart below.
- UV absorbing tempered prismatic glass for brightness. C#73 flat glass lens.
- Optional films and lenses available.

Ballast Assembly: Select Voltage

- Multiple Pass™ full wave capacitor and 30°C rated HPS ballast (with ballast).
- 150 watt: Class H, high reactance for 120 volt and Options -65, -66; linear reactor for 277 volt.
- 175-400 watt: Super CWA for 120 volt and Options -65, -66, -HL; Class H, linear reactor for 277 volt.
- Capacitors and inductors for 120, 277, 347, 480, and 600 volt applications available. See Options.
- Cool, quiet, long-life. Silicone leads. Multiple and easily serviceable. Ceiling grid compatible.
- Fused primary. Renewable. Not for 480 volt.

Housing

- UV resistant. Powder coated. Minimum 1/2" clearance.
- Cool. Dissipates heat across entire surface area. Ventilated.

- Rustproof: Exceeds 1000 hour ASTM 5% salt spray test.
 - Entire luminaire serviced through removable trim assembly.
 - Built-in plaster frame.
- Outlet Box**
- Prewired 14 GA (NEC) galvanized steel, UL listed; with removable insulated cover.
 - 1/2" and 3/4" knockouts.
- Installation**
- 27" galvanized hanger bars supplied (2).
 - Fully adjustable universal mounting brackets supplied (2).
 - Recesses indoor or outdoor in covered locations.
- UL, C-UL (Canada) Listings**
- Wet, damp or dry locations, covered ceilings.
 - Through-branch circuit conductors (6 #12).
- Three Year Limited Warranty**
- Thermal Protection**
- Per current NEC

Wattage Availability and Cut-Out Dimensions

Catalog No.	Lamp/Base	Standard Wattage		Option -43: Lower Wattage		Max. Standby Wattage (-49-65-66-LS)	Ceiling Cut-Out Diameter
		Pulse MH	-24 (HPS)	Pulse MH	-24 (HPS)		
HRR-11067	ED-28/Mog	250	250	150-200	150	150	12.25"
HRR-13069	ED-37/Mog	400	400	150-350	150-250	250	15.0"

Options

Sources and Ballasts

- 24 HPS ballast instead. See wattage chart above for available wattages. Specify voltage.
- 39 Electronic dimming ballast instead, for pulse start metal halide. Consult factory for wattage and voltage availability.
- 96 Regulating electronic MH ballast instead. Consult factory for availability in 175W or above.

Wattage and Voltage

- 43 Lower wattage: See Option -43 chart above for available lower wattages. Specify voltage.
- 120 120 volt, 60 Hz. ballast.
- 277 277 volt, 60 Hz. ballast.
- 347 347 volt, 60 Hz. ballast. Consult factory for dimming or electronic.
- 97 Other voltage ballast instead. Consult factory.

Relays, Standbys, Lamps (See Chart)

- 49 Extra circuit DCB socket. Do not energize simultaneously with main source. Also see -LS.

- 65 Electronic standby system and DCB socket. Following HID outage, provides immediate light until HID restrikes. Also see -66 and -LS.
- 66 Electronic time delay standby system and DCB socket. Following outage, provides light until HID reaches 70% output. Also see Option -LS.
- HL Hi-Lo wiring modification for use with external relay systems (by others). 175 watt or above. CWA ballast only. Specify system.
- LP With lamp. Specify source, wattage, color temperature, and clear or coated. (3700°K standard for metal halide)
- LS With T-4 DCB tungsten halogen standby lamp. Use only with Options -49, -65 or -66.

Lenses and Trims

- 26 Tamper-proof trim. One key per ten fixtures. Also see Option -27. Not available for HRR-13069.
- 27 Clear 1/4" tempered glass beneath tempered prismatic C#73 flat glass lens for vandal resistance. Also see Option -26.
- 32 Trim extender. Broadens trim flange O.D. by 1" to cover larger ceiling opening.
- 40 White grooveless flare trim assembly instead.

- 45 Gasket between trim and ceiling.
- 46 Gasket between trim and lens.
- 94 Custom color trim assembly. Consult factory.
- FR Fresnel tempered lens instead. Not available for HRR-13069 or with Option -26.
- FT Flat white trim instead. Standard with UV absorbing tempered prismatic glass or specify optional lens. Not available for HRR-13069.
- HO Holophane concave lens instead. Not available for HRR-13069.
- ML UV absorbing tempered Microlux glass instead.

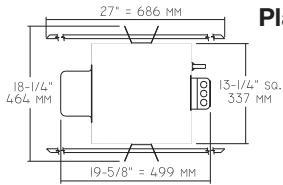
Mounting Options

- 79 Extension collar for up to 2" thick ceilings.
- 85 Ceiling Panel; with recessed fixture hole. Lays-in 2' x 2' grid.

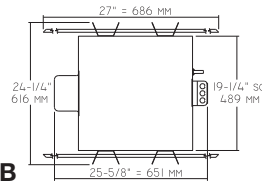
Other Options

- 99 Special modification. Consult factory.
- TA Top access modification for servicing from above ceiling.

HRR-11067 HRR-13069



Plan View A

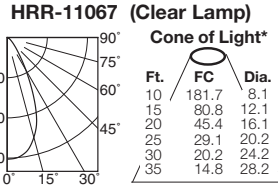
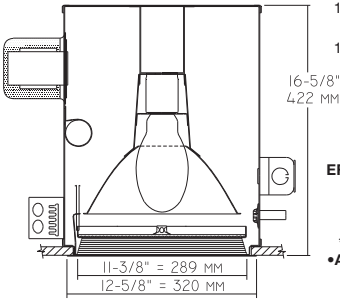


Plan View B

- Cone of Light Key**
- Ft.** Distance from fixture
 - FC** Footcandles (average)
 - Dia.** Circle of light at 50% of FC
- * Dia. (in ft.) shown is where FC value is half the FC at nadir.

C.U. (Coefficients of Utilization) Tables are available on request. Please contact your Kirlin representative.

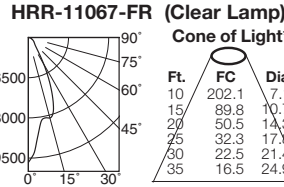
HRR-11067 250W (Plan View A)



EFFIC: 57.1%
ITL TEST #51666

***LER = 46.0**
***AEC = \$5.22**

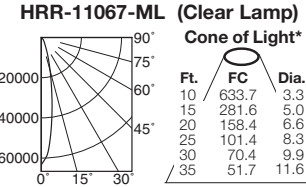
CANDLEPOWER DISTRIBUTION					
	0.0	22.5	45.0	67.5	90.0
0	18172	18172	18172	18172	18172
5	17992	17992	17992	17992	17992
15	15427	15427	15427	15427	15427
25	9001	9001	9001	9001	9001
35	3292	3292	3292	3292	3292
45	1310	1310	1310	1310	1310
55	585	585	585	585	585
65	326	326	326	326	326
75	151	151	151	151	151
85	1	1	1	1	1
90	0	0	0	0	0



EFFIC: 56.0%
ITL TEST #51668

***LER = 45.1**
***AEC = \$5.32**

CANDLEPOWER DISTRIBUTION					
	0.0	22.5	45.0	67.5	90.0
0	20215	20215	20215	20215	20215
5	16453	16453	16453	16453	16453
15	13469	13469	13469	13469	13469
25	8326	8326	8326	8326	8326
35	2797	2797	2797	2797	2797
45	1438	1438	1438	1438	1438
55	1036	1036	1036	1036	1036
65	669	669	669	669	669
75	381	381	381	381	381
85	0	0	0	0	0
90	0	0	0	0	0

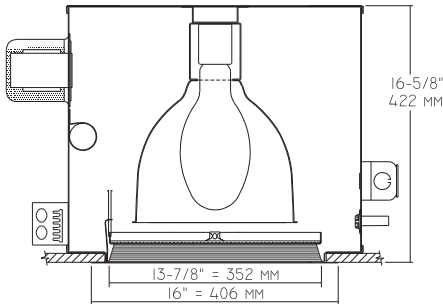


EFFIC: 59.1%
ITL TEST #51667

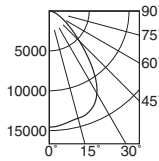
***LER = 47.6**
***AEC = \$5.04**

CANDLEPOWER DISTRIBUTION					
	0.0	22.5	45.0	67.5	90.0
0	63367	63367	63367	63367	63367
5	50917	50917	50917	50917	50917
15	17129	17129	17129	17129	17129
25	5385	5385	5385	5385	5385
35	2441	2441	2441	2441	2441
45	1180	1180	1180	1180	1180
55	394	394	394	394	394
65	167	167	167	167	167
75	79	79	79	79	79
85	0	0	0	0	0
90	0	0	0	0	0

HRR-13069 400W (Plan View B)



HRR-13069 (Clear Lamp)



S/MH 1.2

EFFIC: 59.1%

ITL TEST #51638

***LER = 53.9** ***AEC = \$4.45**

CANDLEPOWER DISTRIBUTION					
	0.0	22.5	45.0	67.5	90.0
0	14570	14570	14570	14570	14570
5	14427	14427	14427	14427	14427
15	13927	13927	13927	13927	13927
25	13120	13120	13120	13120	13120
35	9981	9981	9981	9981	9981
45	5322	5322	5322	5322	5322
55	2636	2636	2636	2636	2636
65	1287	1287	1287	1287	1287
75	587	587	587	587	587
85	6	6	6	6	6
90	0	0	0	0	0

* **LER (Luminaire Efficacy Rating) = Luminaire Effic. x Total Lamp Lumens x Ballast Factor**
Input Watts

* **AEC = Annual Energy Cost per 1000 lumens**
(based on 3000 hours use @ \$0.08 KWH).

SUBMITTAL DATA

APPROVAL STAMP

JOB NAME

TYPE

WATTAGE

VOLTAGE

CATALOG NUMBER

LIMITED WARRANTY: CATALOGED KIRLIN FIXTURES ARE WARRANTED FREE OF DEFECTS IN WORKMANSHIP OR MATERIAL FOR THREE YEARS FROM DATE OF PURCHASE. INSTALLER TO N.E.C. IN NORMAL USE. Manufacturer at its option will replace or repair, or modification of the fixture without prior written authorization from the manufacturer will render the warranty void. This warranty is supplied to the buyer in place of all other warranties, expressed or implied. Seller does not warrant as to merchantability or fitness for a particular use, nor will any oral statement constitute a warranty or amend this specific warranty. Abuse of the fixture, improper installation, or modification of the fixture without prior written authorization from the manufacturer will render the warranty void.