

Recessed Lensed E-Lamp
 "Pulse Start" Parabolic
 Downlights: 150 to 250 Watt

HRR-11039

**THIS PRODUCT
 IS NO LONGER
 AVAILABLE**

Features

Lamp

- Designed for metal halide E-lamps, each of which is listed below for standard and optional wattages.
- See Option -43 and chart below for lower wattage for HPS availability.

Socket

- Vertical. Pulse rated.
- Glazed porcelain. Silicone leads.
- Nickel-plated brass screw shell.

Reflectors

- Upper: Parabolic specular Alzak® aluminum.
- Lower: Low brightness parabolic specular Alzak aluminum, self-flanged.
- Fourteen optional reflector finishes available.

Lens

- UV absorbing tempered Microlux glass mounted to upper reflector. Also see Options.

Ballast Assembly

- Whisper Quiet™ full power capsule or 175W rated HPS pulse start ballast.

- 50 Watt Class High Pressure Sodium (HPS) and options (A, -F, -G, -H, -I, -J, -K, -L, -M, -N, -O, -P, -Q, -R, -S, -T, -U, -V, -W, -X, -Y, -Z, -AA, -AB, -AC, -AD, -AE, -AF, -AG, -AH, -AI, -AJ, -AK, -AL, -AM, -AN, -AO, -AP, -AQ, -AR, -AS, -AT, -AU, -AV, -AW, -AX, -AY, -AZ, -BA, -BB, -BC, -BD, -BE, -BF, -BG, -BH, -BI, -BJ, -BK, -BL, -BM, -BN, -BO, -BP, -BQ, -BR, -BS, -BT, -BU, -BV, -BW, -BX, -BY, -BZ, -CA, -CB, -CC, -CD, -CE, -CF, -CG, -CH, -CI, -CJ, -CK, -CL, -CM, -CN, -CO, -CP, -CQ, -CR, -CS, -CT, -CU, -CV, -CW, -CX, -CY, -CZ, -DA, -DB, -DC, -DD, -DE, -DF, -DG, -DH, -DI, -DJ, -DK, -DL, -DM, -DN, -DO, -DP, -DQ, -DR, -DS, -DT, -DU, -DV, -DW, -DX, -DY, -DZ, -EA, -EB, -EC, -ED, -EE, -EF, -EG, -EH, -EI, -EJ, -EK, -EL, -EM, -EN, -EO, -EP, -EQ, -ER, -ES, -ET, -EU, -EV, -EW, -EX, -EY, -EZ, -FA, -FB, -FC, -FD, -FE, -FF, -FG, -FH, -FI, -FJ, -FK, -FL, -FM, -FN, -FO, -FP, -FQ, -FR, -FS, -FT, -FU, -FV, -FW, -FX, -FY, -FZ, -GA, -GB, -GC, -GD, -GE, -GF, -GG, -GH, -GI, -GJ, -GK, -GL, -GM, -GN, -GO, -GP, -GQ, -GR, -GS, -GT, -GU, -GV, -GW, -GX, -GY, -GZ, -HA, -HB, -HC, -HD, -HE, -HF, -HG, -HH, -HI, -HJ, -HK, -HL, -HM, -HN, -HO, -HP, -HQ, -HR, -HS, -HT, -HU, -HV, -HW, -HX, -HY, -HZ, -IA, -IB, -IC, -ID, -IE, -IF, -IG, -IH, -II, -IJ, -IK, -IL, -IM, -IN, -IO, -IP, -IQ, -IR, -IS, -IT, -IU, -IV, -IW, -IX, -IY, -IZ, -JA, -JB, -JC, -JD, -JE, -JF, -JG, -JH, -JI, -JJ, -JK, -JL, -JM, -JN, -JO, -JP, -JQ, -JR, -JS, -JT, -JU, -JV, -JW, -JX, -JY, -JZ, -KA, -KB, -KC, -KD, -KE, -KF, -KG, -KH, -KI, -KJ, -KK, -KL, -KM, -KN, -KO, -KP, -KQ, -KR, -KS, -KT, -KU, -KV, -KW, -KX, -KY, -KZ, -LA, -LB, -LC, -LD, -LE, -LF, -LG, -LH, -LI, -LJ, -LK, -LL, -LM, -LN, -LO, -LP, -LQ, -LR, -LS, -LT, -LU, -LV, -LW, -LX, -LY, -LZ, -MA, -MB, -MC, -MD, -ME, -MF, -MG, -MH, -MI, -MJ, -MK, -ML, -MM, -MN, -MO, -MP, -MQ, -MR, -MS, -MT, -MU, -MV, -MW, -MX, -MY, -MZ, -NA, -NB, -NC, -ND, -NE, -NF, -NG, -NH, -NI, -NJ, -NK, -NL, -NM, -NN, -NO, -NP, -NQ, -NR, -NS, -NT, -NU, -NV, -NW, -NX, -NY, -NZ, -OA, -OB, -OC, -OD, -OE, -OF, -OG, -OH, -OI, -OJ, -OK, -OL, -OM, -ON, -OO, -OP, -OQ, -OR, -OS, -OT, -OU, -OV, -OW, -OX, -OY, -OZ, -PA, -PB, -PC, -PD, -PE, -PF, -PG, -PH, -PI, -PJ, -PK, -PL, -PM, -PN, -PO, -PP, -PQ, -PR, -PS, -PT, -PU, -PV, -PW, -PX, -PY, -PZ, -QA, -QB, -QC, -QD, -QE, -QF, -QG, -QH, -QI, -QJ, -QK, -QL, -QM, -QN, -QO, -QP, -QQ, -QR, -QS, -QT, -QU, -QV, -QW, -QX, -QY, -QZ, -RA, -RB, -RC, -RD, -RE, -RF, -RG, -RH, -RI, -RJ, -RK, -RL, -RM, -RN, -RO, -RP, -RQ, -RR, -RS, -RT, -RU, -RV, -RW, -RX, -RY, -RZ, -SA, -SB, -SC, -SD, -SE, -SF, -SG, -SH, -SI, -SJ, -SK, -SL, -SM, -SN, -SO, -SP, -SQ, -SR, -SS, -ST, -SU, -SV, -SW, -SX, -SY, -SZ, -TA, -TB, -TC, -TD, -TE, -TF, -TG, -TH, -TI, -TJ, -TK, -TL, -TM, -TN, -TO, -TP, -TQ, -TR, -TS, -TT, -TU, -TV, -TW, -TX, -TY, -TZ, -UA, -UB, -UC, -UD, -UE, -UF, -UG, -UH, -UI, -UJ, -UK, -UL, -UM, -UN, -UO, -UP, -UQ, -UR, -US, -UT, -UU, -UV, -UW, -UX, -UY, -UZ, -VA, -VB, -VC, -VD, -VE, -VF, -VG, -VH, -VI, -VJ, -VK, -VL, -VM, -VN, -VO, -VP, -VQ, -VR, -VS, -VT, -VU, -VV, -VW, -VX, -VY, -VZ, -WA, -WB, -WC, -WD, -WE, -WF, -WG, -WH, -WI, -WJ, -WK, -WL, -WM, -WN, -WO, -WP, -WQ, -WR, -WS, -WT, -WU, -WV, -WW, -WX, -WY, -WZ, -XA, -XB, -XC, -XD, -XE, -XF, -XG, -XH, -XI, -XJ, -XK, -XL, -XM, -XN, -XO, -XP, -XQ, -XR, -XS, -XT, -XU, -XV, -XW, -XX, -XY, -XZ, -YA, -YB, -YC, -YD, -YE, -YF, -YG, -YH, -YI, -YJ, -YK, -YL, -YM, -YN, -YO, -YP, -YQ, -YR, -YS, -YT, -YU, -YV, -YW, -YX, -YY, -YZ, -ZA, -ZB, -ZC, -ZD, -ZE, -ZF, -ZG, -ZH, -ZI, -ZJ, -ZK, -ZL, -ZM, -ZN, -ZO, -ZP, -ZQ, -ZR, -ZS, -ZT, -ZU, -ZV, -ZW, -ZX, -ZY, -ZZ, -AA, -AB, -AC, -AD, -AE, -AF, -AG, -AH, -AI, -AJ, -AK, -AL, -AM, -AN, -AO, -AP, -AQ, -AR, -AS, -AT, -AU, -AV, -AW, -AX, -AY, -AZ, -BA, -BB, -BC, -BD, -BE, -BF, -BG, -BH, -BI, -BJ, -BK, -BL, -BM, -BN, -BO, -BP, -BQ, -BR, -BS, -BT, -BU, -BV, -BW, -BX, -BY, -BZ, -CA, -CB, -CC, -CD, -CE, -CF, -CG, -CH, -CI, -CJ, -CK, -CL, -CM, -CN, -CO, -CP, -CQ, -CR, -CS, -CT, -CU, -CV, -CW, -CX, -CY, -CZ, -DA, -DB, -DC, -DD, -DE, -DF, -DG, -DH, -DI, -DJ, -DK, -DL, -DM, -DN, -DO, -DP, -DQ, -DR, -DS, -DT, -DU, -DV, -DW, -DX, -DY, -DZ, -EA, -EB, -EC, -ED, -EE, -EF, -EG, -EH, -EI, -EJ, -EK, -EL, -EM, -EN, -EO, -EP, -EQ, -ER, -ES, -ET, -EU, -EV, -EW, -EX, -EY, -EZ, -FA, -FB, -FC, -FD, -FE, -FF, -FG, -FH, -FI, -FJ, -FK, -FL, -FM, -FN, -FO, -FP, -FQ, -FR, -FS, -FT, -FU, -FV, -FW, -FX, -FY, -FZ, -GA, -GB, -GC, -GD, -GE, -GF, -GG, -GH, -GI, -GJ, -GK, -GL, -GM, -GN, -GO, -GP, -GQ, -GR, -GS, -GT, -GU, -GV, -GW, -GX, -GY, -GZ, -HA, -HB, -HC, -HD, -HE, -HF, -HG, -HH, -HI, -HJ, -HK, -HL, -HM, -HN, -HO, -HP, -HQ, -HR, -HS, -HT, -HU, -HV, -HW, -HX, -HY, -HZ, -IA, -IB, -IC, -ID, -IE, -IF, -IG, -IH, -II, -IJ, -IK, -IL, -IM, -IN, -IO, -IP, -IQ, -IR, -IS, -IT, -IU, -IV, -IW, -IX, -IY, -IZ, -JA, -JB, -JC, -JD, -JE, -JF, -JG, -JH, -JI, -JJ, -JK, -JL, -JM, -JN, -JO, -JP, -JQ, -JR, -JS, -JT, -JU, -JV, -JW, -JX, -JY, -JZ, -KA, -KB, -KC, -KD, -KE, -KF, -KG, -KH, -KI, -KJ, -KL, -KM, -KN, -KO, -KP, -KQ, -KR, -KS, -KT, -KU, -KV, -KW, -KX, -KY, -KZ, -LA, -LB, -LC, -LD, -LE, -LF, -LG, -LH, -LI, -LJ, -LK, -LL, -LM, -LN, -LO, -LP, -LQ, -LR, -LS, -LT, -LU, -LV, -LW, -LX, -LY, -LZ, -MA, -MB, -MC, -MD, -ME, -MF, -MG, -MH, -MI, -MJ, -MK, -ML, -MM, -MN, -MO, -MP, -MQ, -MR, -MS, -MT, -MU, -MV, -MW, -MX, -MY, -MZ, -NA, -NB, -NC, -ND, -NE, -NF, -NG, -NH, -NI, -NJ, -NK, -NL, -NM, -NN, -NO, -NP, -NQ, -NR, -NS, -NT, -NU, -NV, -NW, -NX, -NY, -NZ, -OA, -OB, -OC, -OD, -OE, -OF, -OG, -OH, -OI, -OJ, -OK, -OL, -OM, -ON, -OO, -OP, -OQ, -OR, -OS, -OT, -OU, -OV, -OW, -OX, -OY, -OZ, -PA, -PB, -PC, -PD, -PE, -PF, -PG, -PH, -PI, -PJ, -PK, -PL, -PM, -PN, -PO, -PP, -PQ, -PR, -PS, -PT, -PU, -PV, -PW, -PX, -PY, -PZ, -QA, -QB, -QC, -QD, -QE, -QF, -QG, -QH, -QI, -QJ, -QK, -QL, -QM, -QN, -QO, -QP, -QQ, -QR, -QS, -QT, -QU, -QV, -QW, -QX, -QY, -QZ, -RA, -RB, -RC, -RD, -RE, -RF, -RG, -RH, -RI, -RJ, -RK, -RL, -RM, -RN, -RO, -RP, -RQ, -RR, -RS, -RT, -RU, -RV, -RW, -RX, -RY, -RZ, -SA, -SB, -SC, -SD, -SE, -SF, -SG, -SH, -SI, -SJ, -SK, -SL, -SM, -SN, -SO, -SP, -SQ, -SR, -SS, -ST, -SU, -SV, -SW, -SX, -SY, -SZ, -TA, -TB, -TC, -TD, -TE, -TF, -TG, -TH, -TI, -TJ, -TK, -TL, -TM, -TN, -TO, -TP, -TQ, -TR, -TS, -TT, -TU, -TV, -TW, -TX, -TY, -TZ, -UA, -UB, -UC, -UD, -UE, -UF, -UG, -UH, -UI, -UJ, -UK, -UL, -UM, -UN, -UO, -UP, -UQ, -UR, -US, -UT, -UV, -UW, -UX, -UY, -UZ, -VA, -VB, -VC, -VD, -VE, -VF, -VG, -VH, -VI, -VJ, -VK, -VL, -VM, -VN, -VO, -VP, -VQ, -VR, -VS, -VT, -VU, -VV, -VW, -VX, -VY, -VZ, -WA, -WB, -WC, -WD, -WE, -WF, -WG, -WH, -WI, -WJ, -WK, -WL, -WM, -WN, -WO, -WP, -WQ, -WR, -WS, -WT, -WU, -WV, -WW, -WX, -WY, -WZ, -XA, -XB, -XC, -XD, -XE, -XF, -XG, -XH, -XI, -XJ, -XK, -XL, -XM, -XN, -XO, -XP, -XQ, -XR, -XS, -XT, -XU, -XV, -XW, -XX, -XY, -XZ, -YA, -YB, -YC, -YD, -YE, -YF, -YG, -YH, -YI, -YJ, -YK, -YL, -YM, -YN, -YO, -YP, -YQ, -YR, -YS, -YT, -YU, -YV, -YW, -YX, -YY, -YZ, -ZA, -ZB, -ZC, -ZD, -ZE, -ZF, -ZG, -ZH, -ZI, -ZJ, -ZK, -ZL, -ZM, -ZN, -ZO, -ZP, -ZQ, -ZR, -ZS, -ZT, -ZU, -ZV, -ZW, -ZX, -ZY, -ZZ

Please consult

QUOTATIONS

for the best alternative.

- Entire luminaire serviced from below through removable reflectors.
- Built-in plaster frame.
- Outlet Box**
- Prewired 14 GA (NEC) galvanized steel, UL listed; with removable insulated cover.
- 1/2" and 3/4" knockouts.
- Installation**
- 27" galvanized hanger bars supplied (2).
- Fully adjustable universal mounting brackets supplied (2).
- Recesses indoor or outdoor in covered locations.
- UL, C-UL (Canada) Listings**
- Wet, damp or dry locations, covered ceilings.
- Through-branch circuit conductors (6 #12).
- Three Year Limited Warranty**
- Includes standard fixture, including ballast.
- Per current NEC

Wattage Availability and Cut-Out Dimensions

Catalog No.	Lamp/Base	Standard Wattage		Option -43: Lower Wattage		Max. Standby Wattage (-49-65-66-LS)	Ceiling Cut-Out Diameter
		PulseMH	-24 (HPS)	PulseMH	-24 (HPS)		
HRR-11039	ED-28/Mog	250	250	150-200	150	150	12.25"

Options

Sources and Ballasts

- 24 HPS ballast instead. See wattage chart above for available wattages. Specify voltage.
- 39 Electronic dimming ballast instead, for pulse start metal halide. Consult factory for wattage and voltage availability.
- 96 Regulating electronic MH ballast instead. Consult factory for availability in 175W or above.

Wattage and Voltage

- 43 Lower wattage: See Option -43 chart above for available lower wattages. Specify voltage.
- 120 120 volt, 60 Hz. ballast.
- 277 277 volt, 60 Hz. ballast.
- 347 347 volt, 60 Hz. ballast. Consult factory for dimming or electronic.
- 97 Other voltage ballast instead. Consult factory.

Relays, Standby, Lamps (See Chart)

- 49 Extra circuit DCB socket. Do not energize simultaneously with main source. Also see -LS.
- 65 Electronic standby system and DCB socket. Following HID outage, provides immediate light

- until HID restrikes. Also see -66 and -LS.
- 66 Electronic time delay standby system and DCB socket. Following outage, provides light until HID reaches 70% output. Also see Option -LS.
- HL Hi-Lo wiring modification for use with external relay systems (by others). 175 watt or above. CWA ballast only. Specify system.
- LP With lamp. Specify source, wattage, color temperature, and clear or coated. (3700°K standard for metal halide)
- LS With T-4 DCB tungsten halogen standby lamp. Use only with Options -49, -65 or -66.

Reflectors and Trims (Self-Flanged)

- 16 Champagne Gold Alzak lower reflector. (CP x .95)
- 30 All White lower reflector or cross baffle. (CP x .95)
- 31 White flange on lower reflector or cross baffle.
- 32 Trim extender. Broadens trim flange O.D. by 1" to cover larger ceiling opening.
- 45 Gasket above reflector flange. Stops dust streaks.
- 63 Dune specular Alzak lower reflector. (CP x .93)
- 69 Wheat specular Alzak lower reflector. (CP x .92)
- 70 SofTex Clear etched lower reflector. (CP x .92)
- 71 SofTex Dune etched lower reflector. (CP x .89)

- 72 Black specular Alzak lower reflector. (CP x .77)
- 77 SofTex Pewter etched lower reflector. (CP x .85)
- 90 SofTex Champagne Gold etched lower reflector. (CP x .90)
- 91 SofTex Wheat etched lower reflector. (CP x .88)
- 92 Umber specular Alzak lower reflector. (CP x .88)
- 93 Pewter specular Alzak lower reflector. (CP x .83)
- 94 Custom color lower reflector or cross baffle. Consult factory.
- OG OptiGroove black seamless tapered aluminum lower reflector. White trim. (CP x .75)

Lenses

- 15 Prismatic C#73 flat glass lens instead.
- 28 UV absorbing clear tempered glass instead.

Mounting Options

- 79 Extension collar for up to 2" thick ceilings.
- 85 Ceiling Panel; with recessed fixture hole. Lays-in 2' x 2' grid.

Other Options

- 99 Special modification. Consult factory.
- TA Top access; for servicing from above ceiling.



THE KIRLIN COMPANY

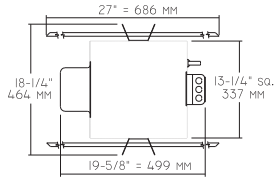
3401 EAST JEFFERSON AVENUE • DETROIT, MICHIGAN 48207-4232
 (313) 259-6400 • Fax: (313) 259-9409 or (313) 259-3121 • www.kirlinlighting.com

THE KIRLIN COMPANY RESERVES THE RIGHT TO CHANGE, WITHOUT NOTICE, DETAILS OR SPECIFICATIONS IN PRODUCT DESIGN.

Alzak® is a registered trademark of ALCOA.

HRR-11039

Plan View



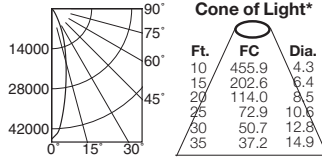
Cone of Light Key

- Ft.** Distance from fixture
- FC** Footcandles (average)
- Dia.** Circle of light at 50% of FC
- * Dia. (in ft.) shown is where FC value is half the FC at nadir.

C.U. (Coefficients of Utilization) Tables are available on request. Please contact your Kirlin representative.

HRR-11039 250W

HRR-11039 (Clear Lamp)

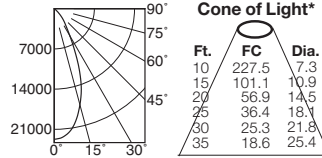


S/MH 0.4 EFFIC: 59.3%

ITL TEST #51652
*LER = 47.7 •AEC = \$5.03

	CANDLEPOWER DISTRIBUTION				
	0.0	22.5	45.0	67.5	90.0
0	45590	45590	45590	45590	45590
5	39348	39348	39348	39348	39348
15	19382	19382	19382	19382	19382
25	8068	8068	8068	8068	8068
35	2412	2412	2412	2412	2412
45	710	710	710	710	710
55	133	133	133	133	133
65	1	1	1	1	1
75	0	0	0	0	0
85	0	0	0	0	0
90	0	0	0	0	0

HRR-11039-15 (Clear Lamp)

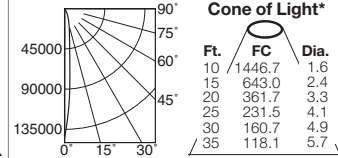


S/MH 0.7 EFFIC: 57.9%

ITL TEST #51654
*LER = 46.6 •AEC = \$5.15

	CANDLEPOWER DISTRIBUTION				
	0.0	22.5	45.0	67.5	90.0
0	22748	22748	22748	22748	22748
5	22158	22158	22158	22158	22158
15	17313	17313	17313	17313	17313
25	9049	9049	9049	9049	9049
35	3480	3480	3480	3480	3480
45	1288	1288	1288	1288	1288
55	163	163	163	163	163
65	1	1	1	1	1
75	0	0	0	0	0
85	0	0	0	0	0
90	0	0	0	0	0

HRR-11039-28 (Clear Lamp)



S/MH 0.2 EFFIC: 62.6%

ITL TEST #51656
*LER = 50.4 •AEC = \$4.76

	CANDLEPOWER DISTRIBUTION				
	0.0	22.5	45.0	67.5	90.0
0	14467	14467	14467	14467	14467
5	6773	6773	6773	6773	6773
15	1944	1944	1944	1944	1944
25	739	739	739	739	739
35	109	109	109	109	109
45	27	27	27	27	27
55	10	10	10	10	10
65	0	0	0	0	0
75	0	0	0	0	0
85	0	0	0	0	0
90	0	0	0	0	0

MULTIPLY CANDELA BY 10.0

LIMITED WARRANTY: CATALOGED KIRLIN FIXTURES ARE WARRANTED FREE OF DEFECTS IN WORKMANSHIP OR MATERIAL FOR THREE YEARS FROM DATE OF PURCHASE. INSTALLED TO N.E.C. IN NORMAL USE. Manufacturer at the option will replace or repair the fixture or refund the purchase price or reimbursement of proof of purchase and electrical labor for the fixture at the time of purchase and electrical labor for the fixture at the time of purchase. This warranty is supplied to the buyer in place of all other warranties, expressed or implied. Seller does not warrant as to merchantability or fitness for a particular use, nor will any oral statement constitute a warranty or amend this specific warranty. Abnormal use, abuse of the fixture, improper installation, or repair, or modification of the fixture without prior written authorization from the manufacturer will render the warranty void.

* LER (Luminaire Efficacy Rating) = Luminaire Effic. x Total Lamp Lumens x Ballast Factor
Input Watts

• AEC = Annual Energy Cost per 1000 lumens
(based on 3000 hours use @ \$0.08 KWH).

SUBMITTAL DATA

APPROVAL STAMP

JOB NAME

TYPE

WATTAGE

VOLTAGE

CATALOG NUMBER