

Recessed type Appearance
Lensed E-Lamp Tube Start
Downlights: 150 to 400 Watt

HRR-08027
HRR-11029

THIS PRODUCT IS NO LONGER AVAILABLE

Features

Lamp

- Designed for metal halide E-lamps (see chart below for standard and optional wattages).
- See Option -43 and chart below for lower wattage for HPS availability.

Socket

- Vertical. Pulse rated. Glazed porcelain.
- Nickel-plated brass screw shell. Standard leads.

Reflector

- Self-flanged clear specular Alzak® aluminum.
- Ten optional reflector finishes (see chart).

Lens

- UV absorbing clear tempered glass mounted to reflector. Also see Options.

Ballast Assembly, Specify Voltage

- WhisperBack™ fully encapsulated, pulse rated HPS pulse start ballast.

AVAILABLE

Please consult

QUOTATIONS

for the best alternative.

- 120 volt, Class H, high reach for 150 volt and Class G-65, Alzak® reflector for 200 volt and 277 volt.
- 400 Watt per W-277, 277 watt.
- Options -65, -66, -HL, Class H, linear reactor for 277 volt.
- Capacitor and ignitor supplied.
- Dimming (-39) and electronic (-96) ballasts available. See Options.
- Quartz, long life, 1000 hours.
- Vandal resistant, tamper proof, infrared, including dry wall.
- Fine.
- Use printed. Re-wire, not in 4.
- HPS.
- Acrylic enameled aluminum.
- Cool: Dissipates heat across entire surface area. Vent lead.
- Resistant to excessive moisture. TMS spray test.

- Entire luminaire serviced from below through removable reflector and lens.
- Built-in plaster frame.

Outlet Box

- Prewired 14 GA (NEC) galvanized steel, UL listed; with removable insulated cover.
- 1/2" and 3/4" knockouts.

Installation

- 27" galvanized hanger bars supplied (2).
- Fully adjustable universal mounting brackets supplied (2).
- Recesses indoor or outdoor in covered locations.

UL, C-UL (Canada) Listings

- Wet, damp or dry locations, covered ceilings.
- Through-branch circuit conductors (6 #12).

Three Year Limited Warranty

- Complete standard fixture, including ballast.
- In accordance with current NEC.

Wattage Availability and Cut-Out Dimensions

Catalog No.	Lamp/Base	Standard Wattage		Option -43: Lower Wattage		Max. Standby Wattage (-49-65-66-LS)	Ceiling Cut-Out Diameter
		Pulse MH	-24 (HPS)	Pulse MH	-24 (HPS)		
HRR-08027	ED-28/Mog	250	250	150-200	150	150	9.0"
HRR-11029	ED-28/Mog	400	250	150-350	150	150	12.25"

Options

Sources and Ballasts

- 24 HPS ballast instead. See wattage chart above for available wattages. Specify voltage.
- 39 Electronic dimming ballast instead, for pulse start metal halide. Consult factory for wattage and voltage availability.
- 96 Regulating electronic MH ballast instead. Consult factory for availability in 175W or above.

Wattage and Voltage

- 43 Lower wattage: See Option -43 chart above for available lower wattages. Specify voltage.
- 120 120 volt, 60 Hz. ballast.
- 277 277 volt, 60 Hz. ballast.
- 347 347 volt, 60 Hz. ballast. Consult factory for dimming or electronic.
- 97 Other voltage ballast instead. Consult factory.

Relays, Standbys, Lamps (See Chart)

- 49 Extra circuit DCB socket. Do not energize simultaneously with main source. Also see -LS.
- 65 Electronic standby system and DCB socket. Following HID outage, provides immediate light

- until HID restrikes. Also see -66 and -LS.
- 66 Electronic time delay standby system and DCB socket. Following outage, provides light until HID reaches 70% output. Also see Option -LS.
- HL Hi-Lo wiring modification for use with external relay systems (by others). 175 watt or above. CWA ballast only. Specify system.
- LP With lamp. Specify source, wattage, color temperature, and clear or coated. (3700°K standard for metal halide) Consult factory for other color temperatures.
- LS With T-4 DCB tungsten halogen standby lamp. Use only with Options -49, -65 or -66.

Reflectors and Trims (Self-Flanged)

- 16 Champagne Gold specular Alzak reflector. (CP x .93)
- 31 White flange (only) on self-flanged reflector.
- 32 Trim extender. Broadens trim flange O.D. by 1" to cover larger ceiling opening.
- 45 Gasket above reflector flange. Stops dust streaks on ceiling.
- 63 Dune specular Alzak reflector. (CP x .90)
- 69 Wheat specular Alzak reflector. (CP x .88)
- 70 SofTex Clear softly etched reflector. (CP x .90)

- 71 SofTex Dune softly etched reflector. (CP x .81)
- 77 SofTex Pewter softly etched reflector. (CP x .78)
- 90 SofTex Champagne Gold softly etched reflector. (CP x .84)
- 91 SofTex Wheat softly etched reflector. (CP x .80)
- 93 Pewter specular Alzak reflector. (CP x .85)
- 94 Custom color reflector. Consult factory.

Lenses

- 15 Prismatic flat C#73 glass instead.
- ML UV absorbing tempered Microlux glass instead. Concentrates distribution.

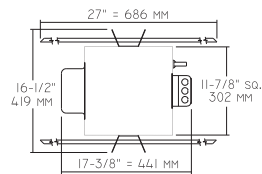
Mounting Options

- 79 Extension collar for up to 2" thick ceilings.
- 82 Sloped ceiling adapter, with mounting hardware. Specify 5° increments up to 30°. Not available for HRR-11029.
- 85 Ceiling Panel; with recessed fixture hole. Lays-in 2' x 2' grid. White.

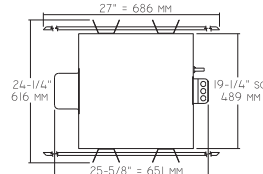
Other Options

- 99 Special modification. Consult factory.

HRR-08027 HRR-11029



Plan View A

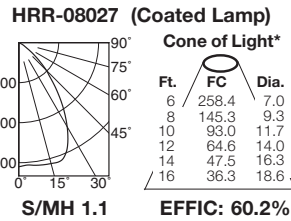
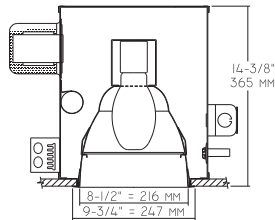


Plan View B

- Cone of Light Key**
- Ft.** Distance from fixture
 - FC** Footcandles (average)
 - Dia.** Circle of light at 50% of FC
- Dia. (in ft.) shown is where FC value is half the FC at nadir.

C.U. (Coefficients of Utilization)
Tables are available on request.
Please contact your Kirlin representative.

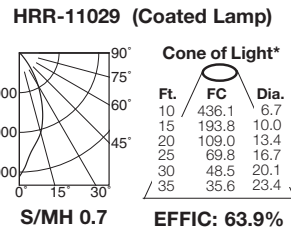
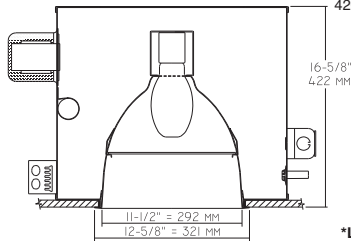
HRR-08027 250W (Plan View A)



CANDLEPOWER DISTRIBUTION					
	0.0	22.5	45.0	67.5	90.0
0	9301	9301	9301	9301	9301
5	9205	9205	9205	9205	9205
15	9383	9383	9383	9383	9383
25	8646	8646	8646	8646	8646
35	5720	5720	5720	5720	5720
45	2927	2927	2927	2927	2927
55	860	860	860	860	860
65	183	183	183	183	183
75	15	15	15	15	15
85	2	2	2	2	2
90	0	0	0	0	0

ITL TEST #51688
***LER = 46.1**
***AEC = \$5.20**

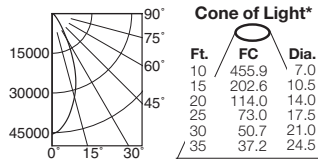
HRR-11029 400W (Plan View B)



CANDLEPOWER DISTRIBUTION					
	0.0	22.5	45.0	67.5	90.0
0	43611	43611	43611	43611	43611
5	37141	37141	37141	37141	37141
15	29062	29062	29062	29062	29062
25	18422	18422	18422	18422	18422
35	8150	8150	8150	8150	8150
45	1735	1735	1735	1735	1735
55	152	152	152	152	152
65	63	63	63	63	63
75	0	0	0	0	0
85	0	0	0	0	0
90	0	0	0	0	0

ITL TEST #51688
***LER = 55.7**
***AEC = \$4.31**

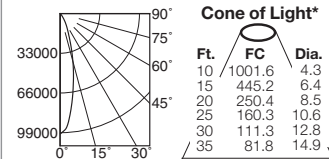
HRR-11029-15 (Clear Lamp)



CANDLEPOWER DISTRIBUTION					
	0.0	22.5	45.0	67.5	90.0
0	45593	45593	45593	45593	45593
5	43085	43085	43085	43085	43085
15	32635	32635	32635	32635	32635
25	18159	18159	18159	18159	18159
35	6560	6560	6560	6560	6560
45	2589	2589	2589	2589	2589
55	1254	1254	1254	1254	1254
65	759	759	759	759	759
75	0	0	0	0	0
85	0	0	0	0	0
90	0	0	0	0	0

ITL TEST #51700
***LER = 61.4**
***AEC = \$3.91**

HRR-11029-ML (Clear Lamp)



CANDLEPOWER DISTRIBUTION					
	0.0	22.5	45.0	67.5	90.0
0	100162	100162	100162	100162	100162
5	87550	87550	87550	87550	87550
15	41139	41139	41139	41139	41139
25	14488	14488	14488	14488	14488
35	4834	4834	4834	4834	4834
45	1311	1311	1311	1311	1311
55	472	472	472	472	472
65	196	196	196	196	196
75	0	0	0	0	0
85	0	0	0	0	0
90	0	0	0	0	0

ITL TEST #51701
***LER = 63.5**
***AEC = \$3.78**

* LER (Luminaire Efficacy Rating) = Luminaire Effic. x Total Lamp Lumens x Ballast Factor / Input Watts

* AEC = Annual Energy Cost per 1000 lumens (based on 3000 hours use @ \$0.08 KWH).

SUBMITTAL DATA

JOB NAME

TYPE

WATTAGE

VOLTAGE

CATALOG NUMBER

APPROVAL STAMP

LIMITED WARRANTY: CATALOGED KIRLIN FIXTURES ARE WARRANTED FREE OF DEFECTS IN WORKMANSHIP OR MATERIAL FOR THREE YEARS FROM DATE OF PURCHASE. INSTALLER TO N.E.C. IN NORMAL USE. Manufacturer at the option will replace or repair, at no charge, any fixture found to be defective in workmanship or material. This warranty is void if the fixture is not installed in accordance with the instructions provided. This warranty does not cover damage to the fixture caused by misuse, abuse or improper installation, or modification of the fixture without prior written authorization from the manufacturer. Seller does not warrant as to merchantability or fitness for a particular use, nor will any oral statement constitute a warranty or amend this specific warranty.