

Recessed type, Acrylic lens, Lensed E-Lamp, Pulse Start, Downlight: 150 to 250 Watt

11" 250W

HRR-11028

THIS PRODUCT IS NO LONGER AVAILABLE

Features

Lamp

- Designed for metal halide E-lamps. See chart below for standard and optional wattages.
- See Option -43 and chart below for lower wattage for HPS availability.

Socket

- Vertical, pulse rated. Glazed porcelain.
- Nickel-plated brass screw shell. Silver leads.

Reflector

- Self-flanged clear specular Alzak® aluminum.
- Ten optional reflector finishes available.

Lens

- UV absorbing clear tempered glass mounted to reflector. Also see Options.

Ballast Assembly, Specific Voltage

- Whisper™ T-4 DCB tungsten halogen pulse start ballast.

AVAILABLE

Please consult

QUOTATIONS

for the best alternative.

- 120 volt, Class H, high reactance for 150 watt.
- Class G, -65, Acuminon reactor for 277 volt.
- 120-277 volt, Super Watt 120-277.
- Options -65, -66, -HL, Class H, linear reactor for 277 volt.
- Capacitor and ignitor supplied.
- Dimming (-39) and electronic (-96) ballasts available. See Options.
- 277 volt, long life, 1000 hours.
- Wet and easily cleaned, in all locations including dry wall.
- Fuse
- Use primary. Rewireable, 60 and 400 mA.
- Hot
- Acrylic chambered aluminum.
- Cool: Dissipates heat across entire surface area. Moisture resistant.
- Resistant to excessive moisture. Meets UL spray test.

- Entire luminaire serviced from below through removable reflector and lens.
- Built-in plaster frame.

Outlet Box

- Prewired 14 GA (NEC) galvanized steel, UL listed; with removable insulated cover.
- 1/2" and 3/4" knockouts.

Installation

- 27" galvanized hanger bars supplied (2).
- Fully adjustable universal mounting brackets supplied (2).
- Recesses indoor or outdoor in covered locations.

UL, C-UL (Canada) Listings

- Wet, damp or dry locations, covered ceilings.
- Through-branch circuit conductors (6 #12).

Three Year Limited Warranty

- Complete standard fixture, including ballast.
- Includes protection.
- Per current NEC.

Wattage Availability and Cut-Out Dimensions

Catalog No.	Lamp/Base	Standard Wattage		Option -43: Lower Wattage		Max. Standby Wattage (-49-65-66-LS)	Ceiling Cut-Out Diameter
		Pulse MH	-24 (HPS)	Pulse MH	-24 (HPS)		
HRR-11028	ED-28/Mog	250	250	150-200	150	150	12.25"

Options

Sources and Ballasts

- 24 HPS ballast instead. See wattage chart above for available wattages. Specify voltage.
- 39 Electronic dimming ballast instead, for pulse start metal halide. Consult factory for wattage and voltage availability.
- 96 Regulating electronic MH ballast instead. Consult factory for availability.

Wattage and Voltage

- 43 Lower wattage: See Option -43 chart above for available lower wattages. Specify voltage.
- 120 120 volt, 60 Hz. ballast.
- 277 277 volt, 60 Hz. ballast.
- 347 347 volt, 60 Hz. ballast. Consult factory for dimming or electronic.
- 97 Other voltage ballast instead. Consult factory.

Relays, Standbys, Lamps (See Chart)

- 49 Extra circuit DCB socket. Do not energize simultaneously with main source. Also see -LS.

- 65 Electronic standby system and DCB socket. Following HID outage, provides immediate light until HID restrikes. Also see -66 and -LS.
- 66 Electronic time delay standby system and DCB socket. Following outage, provides light until HID reaches 70% output. Also see Option -LS.
- HL Hi-Lo wiring modification for use with external relay systems (by others). 175 watt or above. CWA ballast only. Specify system.
- LP With lamp. Specify source, wattage, color temperature, and clear or coated. (3700°K standard for metal halide) Consult factory for other color temperatures.
- LS With T-4 DCB tungsten halogen standby lamp. Use only with Options -49, -65 or -66.

Reflectors and Trims (Self-Flanged)

- 16 Champagne Gold specular Alzak reflector. (CP x .93)
- 31 White flange (only) on self-flanged reflector.
- 32 Trim extender. Broadens trim flange O.D. by 1" to cover larger ceiling opening.
- 45 Gasket above reflector flange. Stops dust streaks on ceiling.

- 63 Dune specular Alzak reflector. (CP x .90)
- 69 Wheat specular Alzak reflector. (CP x .88)
- 70 SofTex Clear softly etched reflector. (CP x .90)
- 71 SofTex Dune softly etched reflector. (CP x .81)
- 77 SofTex Pewter softly etched reflector. (CP x .78)
- 90 SofTex Champagne Gold softly etched reflector. (CP x .84)
- 91 SofTex Wheat softly etched reflector. (CP x .80)
- 93 Pewter specular Alzak reflector. (CP x .85)
- 94 Custom color reflector. Consult factory.

Lenses

- 15 Prismatic flat glass instead.
- ML UV absorbing tempered Microlux glass instead. Concentrates distribution.

Mounting Options

- 79 Extension collar for up to 2" thick ceilings.

Other Options

- 99 Special modification. Consult factory.

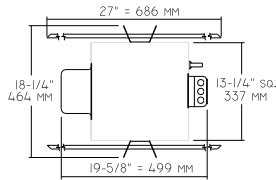
KIRLIN

THE KIRLIN COMPANY

3401 EAST JEFFERSON AVENUE • DETROIT, MICHIGAN 48207-4232
(313) 259-6400 • Fax: (313) 259-9409 or (313) 259-3121 • www.kirlinlighting.com

HRR-11028

Plan View



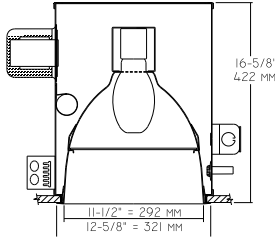
Cone of Light Key

- Ft.** Distance from fixture
- FC** Footcandles (average)
- Dia.** Circle of light at 50% of FC
 - Dia. (in ft.) shown is where FC value is half the FC at nadir.

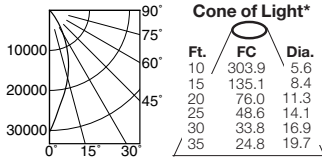
C.U. (Coefficients of Utilization) Tables are available on request. Please contact your Kirlin representative.

LIMITED WARRANTY: CATALOGUED KIRLIN FIXTURES ARE WARRANTED FREE OF DEFECTS IN WORKMANSHIP OR MATERIAL FOR THREE YEARS FROM DATE OF PURCHASE. INSTALLATION BY UNLICENSED PERSONS WILL VOID WARRANTY. INSTALLATION BY LICENSED ELECTRICAL CONTRACTORS IS REQUIRED. THIS WARRANTY IS LIMITED TO THE ORIGINAL PURCHASER. KIRLIN SHALL NOT BE LIABLE FOR ANY OTHER DAMAGES, DIRECT OR INDIRECT, ARISING OUT OF THE USE OF THIS PRODUCT. THIS WARRANTY IS LIMITED TO THE ORIGINAL PURCHASER. KIRLIN SHALL NOT BE LIABLE FOR ANY OTHER DAMAGES, DIRECT OR INDIRECT, ARISING OUT OF THE USE OF THIS PRODUCT. THIS WARRANTY IS LIMITED TO THE ORIGINAL PURCHASER. KIRLIN SHALL NOT BE LIABLE FOR ANY OTHER DAMAGES, DIRECT OR INDIRECT, ARISING OUT OF THE USE OF THIS PRODUCT.

HRR-11028 250W



HRR-11028 (Coated Lamp)

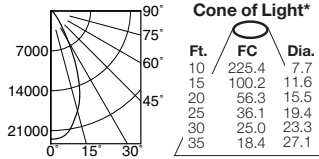


S/MH 0.6 EFFIC: 63.6%

	CANDLEPOWER DISTRIBUTION				
	0.0	22.5	45.0	67.5	90.0
0	30389	30389	30389	30389	30389
5	25091	25091	25091	25091	25091
15	17482	17482	17482	17482	17482
25	10233	10233	10233	10233	10233
35	5908	5908	5908	5908	5908
45	782	782	782	782	782
55	91	91	91	91	91
65	31	31	31	31	31
75	8	8	8	8	8
85	2	2	2	2	2
90	0	0	0	0	0

ITL TEST #51679
*LER = 48.7
*AEC = \$4.92

HRR-11028-15 (Clear Lamp)

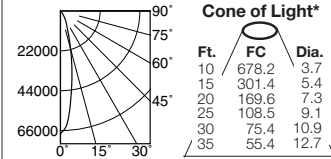


S/MH 0.7 EFFIC: 65.3%

	CANDLEPOWER DISTRIBUTION				
	0.0	22.5	45.0	67.5	90.0
0	22540	22540	22540	22540	22540
5	22247	22247	22247	22247	22247
15	18153	18153	18153	18153	18153
25	10365	10365	10365	10365	10365
35	3522	3522	3522	3522	3522
45	1412	1412	1412	1412	1412
55	736	736	736	736	736
65	473	473	473	473	473
75	0	0	0	0	0
85	0	0	0	0	0
90	0	0	0	0	0

ITL TEST #51698
*LER = 52.6
*AEC = \$4.57

HRR-11028-ML (Clear Lamp)



S/MH 0.4 EFFIC: 69.0%

	CANDLEPOWER DISTRIBUTION				
	0.0	22.5	45.0	67.5	90.0
0	67824	67824	67824	67824	67824
5	56369	56369	56369	56369	56369
15	21816	21816	21816	21816	21816
25	7880	7880	7880	7880	7880
35	2835	2835	2835	2835	2835
45	730	730	730	730	730
55	239	239	239	239	239
65	136	136	136	136	136
75	0	0	0	0	0
85	0	0	0	0	0
90	0	0	0	0	0

ITL TEST #51699
*LER = 55.6
*AEC = \$4.32

* LER (Luminaire Efficacy Rating) = Luminaire Effic. x Total Lamp Lumens x Ballast Factor / Input Watts

* AEC = Annual Energy Cost per 1000 lumens (based on 3000 hours use @ \$0.08 KWH).

SUBMITTAL DATA

APPROVAL STAMP

JOB NAME

TYPE

WATTAGE

VOLTAGE

CATALOG NUMBER