

Recessed Upper End Comp
"Pulse Start" Downlights
50 to 400 Watt

8" 250W
11" 400W

HRR-08016
HRR-11018

THIS PRODUCT IS NO LONGER AVAILABLE

PLEASE CONSULT QUOTATIONS

For the best alternative.

Features

Lamp

- Designed for open rated metal halide E-lamps. See chart below for standard and optional wattages.
- See Option -43 and chart below for lower wattage for HPS availability.

Socket

- Vertical. Pulse and open rated.
- Glazed porcelain.
- Nickel-plated brass screw shell. Silicone leads.

Reflector

- Self-flanged clear specular Alzak® or optional reflector finishes available.

Ballast Assembly. Specify Voltage

- Whisper Quiet™ pulse start ballast.

- 150 watt Class (high pressure for 175-200 watt; CWA) 120 volt and 277 volt.
- Capacitor and ignitor supplied.
- Dimming (-39) and electronic (-96) ballasts available. See Options.
- Cool, quiet, long-life. Silicone leads.

- 150 watt Class (high pressure for 175-200 watt; CWA) 120 volt and 277 volt.
- Capacitor and ignitor supplied.
- Dimming (-39) and electronic (-96) ballasts available. See Options.
- Cool, quiet, long-life. Silicone leads.

- 150 watt Class (high pressure for 175-200 watt; CWA) 120 volt and 277 volt.
- Capacitor and ignitor supplied.
- Dimming (-39) and electronic (-96) ballasts available. See Options.
- Cool, quiet, long-life. Silicone leads.

- 150 watt Class (high pressure for 175-200 watt; CWA) 120 volt and 277 volt.
- Capacitor and ignitor supplied.
- Dimming (-39) and electronic (-96) ballasts available. See Options.
- Cool, quiet, long-life. Silicone leads.

- 150 watt Class (high pressure for 175-200 watt; CWA) 120 volt and 277 volt.
- Capacitor and ignitor supplied.
- Dimming (-39) and electronic (-96) ballasts available. See Options.
- Cool, quiet, long-life. Silicone leads.

- 150 watt Class (high pressure for 175-200 watt; CWA) 120 volt and 277 volt.
- Capacitor and ignitor supplied.
- Dimming (-39) and electronic (-96) ballasts available. See Options.
- Cool, quiet, long-life. Silicone leads.

- 150 watt Class (high pressure for 175-200 watt; CWA) 120 volt and 277 volt.
- Capacitor and ignitor supplied.
- Dimming (-39) and electronic (-96) ballasts available. See Options.
- Cool, quiet, long-life. Silicone leads.

- Entire luminaire serviced from below through removable reflector.
- Built-in plaster frame.

Outlet Box

- Prewired 14 GA (NEC) galvanized steel, UL listed; with removable insulated cover.
- 1/2" and 3/4" knockouts.

Installation

- 27" galvanized hanger bars supplied (2).
- Fully adjustable universal mounting brackets supplied (2).
- Recesses indoor or outdoor in covered locations.

UL, C-UL (Canada) Listings

- Wet, damp or dry locations, covered ceilings.
- Through-branch circuit conductors (6 #12).

Three Year Limited Warranty

- Complete standard fixture, including ballast.

Protection

- UL, C-UL (Canada) Listings

Wattage Availability and Cut-Out Dimensions

Catalog No.	Lamp/Base	Standard Wattage		Option -43: Lower Wattage		Ceiling Cut-Out Diameter
		Pulse MH	-24 (HPS)	Pulse MH	-24 (HPS)	
HRR-08016	ED-28/Mog	250	250	150-200	150	9.0"
HRR-11018	ED-28/Mog	400	250	150-320	150	12.25"

Options

Sources and Ballasts

- 24 HPS ballast instead. See wattage chart above for available wattages. Specify voltage.
- 39 Electronic dimming ballast instead, for pulse start metal halide. Consult factory for wattage and voltage availability.
- 96 Regulating electronic MH ballast instead. Consult factory.

Wattage and Voltage

- 43 Lower wattage: See Option -43 chart above for available lower wattages. Specify voltage.
- 120 120 volt, 60 Hz. ballast.
- 277 277 volt, 60 Hz. ballast.
- 347 347 volt, 60 Hz. ballast. Consult factory for dimming or electronic.
- 97 Other voltage ballast instead. Consult factory.

Relays, Lamps (See Chart)

- HL Hi-Lo wiring modification for use with external relay systems (if others). 175 watt or above. CWA ballast only. Specify system.
- LP With lamp. Specify source, wattage, color temperature, and clear or coated. (3700°K standard for metal halide) Consult factory for other color temperatures.

Reflectors and Trims (Self-Flanged)

- 16 Champagne Gold specular Alzak reflector. (CP x .93)
- 31 White flange (only) on self-flanged reflector.
- 32 Trim extender. Broadens trim flange O.D. by 1" to cover larger ceiling opening.
- 45 Gasket above reflector flange. Stops dust streaks on ceiling.
- 63 Dune specular Alzak reflector. (CP x .90)
- 69 Wheat specular Alzak reflector. (CP x .88)
- 70 SofTex Clear softly etched reflector. Resists smudges. (CP x .90)
- 71 SofTex Dune softly etched reflector. Resists smudges. (CP x .81)

- 77 SofTex Pewter softly etched reflector. Resists smudges. (CP x .78)
- 90 SofTex Champagne Gold softly etched reflector. Resists smudges. (CP x .84)
- 91 SofTex Wheat softly etched reflector. Resists smudges. (CP x .80)
- 93 Pewter specular Alzak reflector. (CP x .85)
- 94 Custom color reflector. Consult factory.
- OG OptiGroove; black seamless tapered aluminum reflector. White trim. (CP x .80) Not available for HRR-11018.

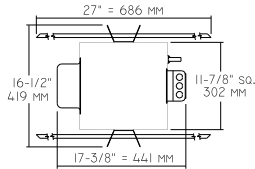
Mounting Options

- 79 Extension collar for up to 2" thick ceilings.
- 82 Sloped ceiling adapter, with mounting hardware. Specify 5° increments up to 30°. Not available for HRR-11018.

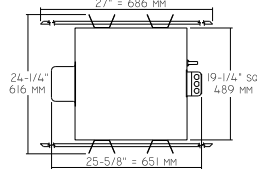
Other Options

- 99 Special modification. Consult factory.

HRR-08016 HRR-11018



Plan View A



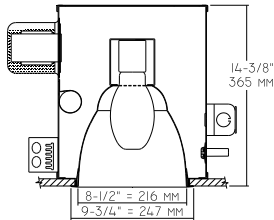
Plan View B

- Cone of Light Key**
- Ft.** Distance from fixture
 - FC** Footcandles (average)
 - Dia.** Circle of light at 50% of FC
- * Dia. (in ft.) shown is where FC value is half the FC at nadir.

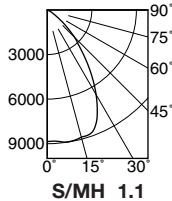
C.U. (Coefficients of Utilization)
Tables are available on request.
Please contact your Kirlin representative.

LIMITED WARRANTY: CATALOGED KIRLIN FIXTURES ARE WARRANTED FREE OF DEFECTS IN WORKMANSHIP OR MATERIAL FOR THREE YEARS FROM DATE OF PURCHASE. INSTALLER TO N.E.C. IN NORMAL USE. Manufacturer at his option will replace or repair, at no charge, any fixture found to be defective in workmanship or material. This warranty is void if the fixture is not installed, used, or maintained in accordance with the instructions provided by purchaser or any person. This warranty is applied to the buyer in place of all other warranties, expressed or implied. Seller does not warrant as to merchantability or fitness for a particular use, nor will any oral statement constitute a warranty or amend this specific warranty. Abnormal use, abuse of the fixture, improper installation, or modification of the fixture without prior written authorization from the manufacturer will render the warranty void.

HRR-08016 250W (Plan View A)



(Coated Lamp)



Cone of Light*

Ft.	FC	Dia.
6	245.9	6.8
8	138.3	9.1
10	88.5	11.3
12	61.5	13.6
14	45.2	15.9
16	34.6	18.1

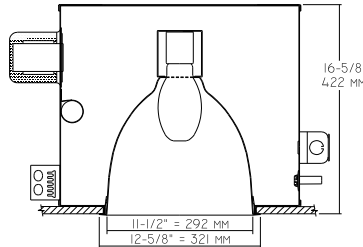
EFFIC: 57.8%

ITL TEST #51685

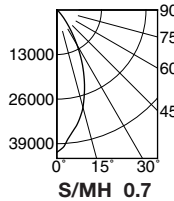
*LER = 42.1 *AEC = \$5.71

	CANDLEPOWER DISTRIBUTION				
	0.0	22.5	45.0	67.5	90.0
0	8852	8852	8852	8852	8852
5	8881	8881	8881	8881	8881
15	8866	8866	8866	8866	8866
25	7942	7942	7942	7942	7942
35	5074	5074	5074	5074	5074
45	2602	2602	2602	2602	2602
55	790	790	790	790	790
65	161	161	161	161	161
75	14	14	14	14	14
85	0	0	0	0	0
90	0	0	0	0	0

HRR-11018 400W (Plan View B)



(Coated Lamp)



Cone of Light*

Ft.	FC	Dia.
10	415.3	6.9
15	184.6	10.4
20	103.8	13.9
25	66.4	17.3
30	46.1	20.8
35	33.9	24.3

EFFIC: 63.5%

ITL TEST #51722

*LER = 52.7 *AEC = \$4.56

	CANDLEPOWER DISTRIBUTION				
	0.0	22.5	45.0	67.5	90.0
0	41526	41526	41526	41526	41526
5	37677	37677	37677	37677	37677
15	29404	29404	29404	29404	29404
25	17675	17675	17675	17675	17675
35	6718	6718	6718	6718	6718
45	1460	1460	1460	1460	1460
55	96	96	96	96	96
65	16	16	16	16	16
75	0	0	0	0	0
85	0	0	0	0	0
90	0	0	0	0	0

* LER (Luminaire Efficacy Rating) = Luminaire Effic. x Total Lamp Lumens x Ballast Factor / Input Watts

* AEC = Annual Energy Cost per 1000 lumens (based on 3000 hours use @ \$0.08 KWH).

SUBMITTAL DATA

APPROVAL STAMP

JOB NAME

TYPE

WATTAGE

VOLTAGE

CATALOG NUMBER