

Recessed recessed ceiling  
"Pulse Start" Eipsoidal  
Downlights: 50 to 250 Watt

**THIS PRODUCT IS NO LONGER AVAILABLE**

8" 200W  
9" 250W

**HRR-08033**  
**HRR-09034**

**Features**

**Lamp**

- Designed for metal halide E-lamps. See chart below for standard and optional wattages.
- See Option -43 and chart below for lower wattage for HPS availability.

**Socket**

- Vertical. Pulse rated. Glazed porcelain.
- Nickel-plated brass screw shell. Silicone leads.

**Reflectors**

- Upper: Eipsoidal specular Alzak® aluminum.
- Lower: Low brightness parabolic specular Alzak aluminum, self-flanged.
- Fourteen optional lower reflector finishes.

**Lens**

- UV absorbing clear tempered glass mounted to upper reflector. Also see Options.

**Ballast Assembly**

- Whisper Quiet™ HV capsule rated 1000 pulse start ballast.

50-200 watt: Class H, linear reactor for 277 volt. Options -65, -66, -HL; Class H, linear reactor for 277 volt.  
Options -65, -66, -HL; Class H, linear reactor for 277 volt.  
Capacitor and ignitor supplied.  
Dimming (-39) and electronic (-96) ballasts available. See Options.Cool: Dissipates heat across entire surface.Acrylic enameled aluminum.  
Dune specular Alzak lower cone. (CP x .93)  
Wheat specular Alzak lower cone. (CP x .92)  
SofTex Clear etched lower cone. (CP x .92)  
SofTex Dune etched lower cone. (CP x .89)  
Black specular Alzak lower cone. (CP x .77)

**Please consult**

**QUOTATIONS**

**for the best alternative.**

- Entire luminaire serviced from below through removable reflectors.
- Built-in plaster frame.

**Outlet Box**

- Prewired 14 GA. (NEC) galvanized steel, UL listed; with removable insulated cover.
- 1/2" and 3/4" knockouts.

**Installation**

- 27" galvanized hanger bars supplied (2).
- Fully adjustable universal mounting brackets supplied (2).
- Recesses indoor or outdoor in covered locations.

**UL, C-UL (Canada) Listings**

- Wet, damp or dry locations, covered ceilings.
- Through-branch circuit conductors (6 #12).
- Three Year Limited Warranty
- UL listed standard fixture, including ballast.
- Per current NEC

**Wattage / Lamp Availability and Cut-out Dimensions**

Catalog No.	Lamp/Base	Standard Wattage		Option -43: Lower Wattage		Max. Standby Wattage (-49-65-66-LS)	Ceiling Cut-Out Diameter
		Pulse MH	-24 (HPS)	Pulse MH	-24 (HPS)		
HRR-08033	ED-17/Med	200	150	50-175	35-150	100	9.0"
HRR-09034	ED-28/Mog	250	250	150-200	150	150	10.38"

**Options**

**Sources and Ballasts**

- 24 HPS ballast instead. See wattage chart above for available wattages. Specify voltage.
- 39 Electronic dimming ballast instead, for pulse start metal halide. Consult factory for wattage and voltage availability.
- 96 Regulating electronic MH ballast instead. Consult factory for availability in 175W or above.

**Wattage and Voltage**

- 43 Lower wattage: See Option -43 chart above for available lower wattages. Specify voltage.
- 120 120 volt, 60 Hz. ballast.
- 277 277 volt, 60 Hz. ballast.
- 347 347 volt, 60 Hz. ballast. Consult factory for dimming or electronic.
- 97 Other voltage ballast instead. Consult factory.

**Relays, Standby, Lamps (see chart)**

- 49 Extra circuit DCB socket. Do not energize simultaneously with main source. Also see -LS.
- 65 Electronic standby system and DCB socket. Following HID outage, provides immediate light until HID restrikes. Also see -66 and -LS.

- 66 Electronic time delay standby system and DCB socket. Following outage, provides light until HID reaches 70% output. Also see Option -LS.
- HL Hi-Lo wiring modification for use with external relay systems (by others). 175 watt or above. CWA ballast only. Specify system.
- LP With lamp. Specify source, wattage, color temperature, and clear or coated. (3700°K standard for metal halide) Consult factory for other color temperatures.
- LS With T-4 DCB tungsten halogen standby lamp. Use only with Options -49, -65 or -66.

**Reflectors and Trims (Self-Flanged)**

- 16 Champagne Gold specular Alzak lower cone. (CP x .95)
- 30 All White lower cone. (CP x .95)
- 31 White flange (only) on lower cone.
- 32 Trim extender. Broadens trim flange O.D. by 1".
- 45 Gasket above lower reflector flange. Stops dust streaks on ceiling.
- 63 Dune specular Alzak lower cone. (CP x .93)
- 69 Wheat specular Alzak lower cone. (CP x .92)
- 70 SofTex Clear etched lower cone. (CP x .92)
- 71 SofTex Dune etched lower cone. (CP x .89)
- 72 Black specular Alzak lower cone. (CP x .77)

- 77 SofTex Pewter etched lower cone. (CP x .85)
- 90 SofTex Champagne Gold etched lower cone. (CP x .90)
- 91 SofTex Wheat etched lower cone. (CP x .88)
- 92 Umber specular Alzak lower cone. (CP x .83)
- 93 Pewter specular Alzak lower cone. (CP x .88)
- 94 Custom color lower reflector. Consult factory.
- OG OptiGroove black seamless tapered aluminum lower reflector. White trim. (CP x .75)

**Lenses**

- 15 Prismatic flat C#73 glass instead.
- ML UV absorbing tempered Microlux glass instead.

**Mounting Options**

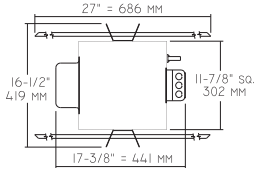
- 79 Extension collar for up to 2" thick ceilings.
- 82 Sloped ceiling adapter, with mounting hardware. Specify 5° increments up to 30°.
- 85 Ceiling Panel; with recessed fixture hole. Lays-in 2' x 2' grid. White.

**Other Options**

- 99 Special modification. Consult factory.
- TA Top access modification for servicing above ceiling.

### HRR-08033 HRR-09034

Plan View



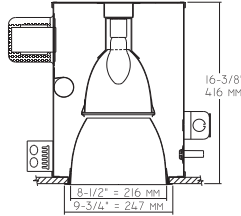
#### Cone of Light Key

- Ft.** Distance from fixture
- FC** Footcandles (average)
- Dia.** Circle of light at 50% of FC
- Dia. (in ft.) shown is where FC value is half the FC at nadir.

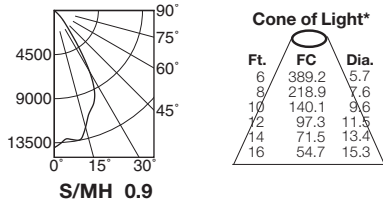
C.U. (Coefficients of Utilization) Tables are available on request. Please contact your Kirlin representative.

LIMITED WARRANTY: CATALOGUED KIRLIN FIXTURES ARE WARRANTED FREE OF DEFECTS IN WORKMANSHIP OR MATERIAL FOR THREE YEARS FROM DATE OF PURCHASE. INSTALLED TO N.E.C. IN NORMAL USE. Manufacturer at his option will replace or repair fixture free of charge if the purchaser provides a representation of the purchase price of the fixture at the time of purchase and adequate evidence of the purchase price is provided to the manufacturer. Labelled or unlabelled fixtures are warranted for one year from date of purchase. This warranty is supplied to the buyer in place of all other warranties, expressed or implied. Seller does not warrant as to merchantability or fitness for a particular use, nor will any oral statement constitute a warranty or amend this specific warranty. Abnormal use, abuse of the fixture, improper installation, or repair, or modification of the fixture without prior written authorization from the manufacturer will render the warranty void.

#### HRR-08033 200W



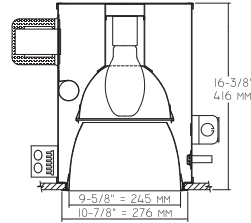
#### HRR-08033 (Coated Lamp)



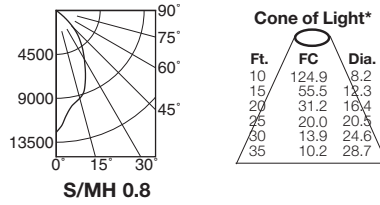
CANDLEPOWER DISTRIBUTION					
	0.0	22.5	45.0	67.5	90.0
0	14012	14012	14012	14012	14012
5	13185	13185	13185	13185	13185
15	12335	12335	12335	12335	12335
25	9749	9749	9749	9749	9749
35	3612	3612	3612	3612	3612
45	863	863	863	863	863
55	0	0	0	0	0
65	0	0	0	0	0
75	0	0	0	0	0
85	0	0	0	0	0
90	0	0	0	0	0

**EFFIC: 60.5%**  
ITL TEST #51705  
\*LER = 49.5  
•AEC = \$4.84

#### HRR-09034 250W



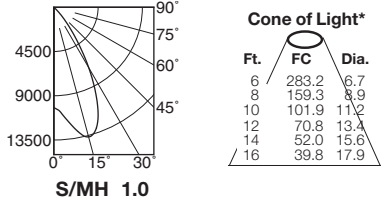
#### HRR-09034 (Coated Lamp)



CANDLEPOWER DISTRIBUTION					
	0.0	22.5	45.0	67.5	90.0
0	12487	12487	12487	12487	12487
5	10950	10950	10950	10950	10950
15	9315	9315	9315	9315	9315
25	7081	7081	7081	7081	7081
35	4658	4658	4658	4658	4658
45	2444	2444	2444	2444	2444
55	50	50	50	50	50
65	12	12	12	12	12
75	0	0	0	0	0
85	0	0	0	0	0
90	0	0	0	0	0

**EFFIC: 52.4%**  
ITL TEST #52139  
\*LER = 38.1  
•AEC = \$6.29

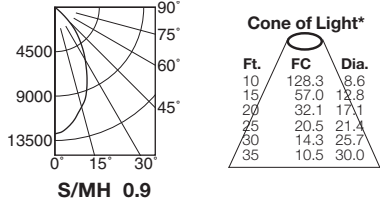
#### HRR-08033-15 (Clear Lamp)



CANDLEPOWER DISTRIBUTION					
	0.0	22.5	45.0	67.5	90.0
0	10194	10194	10194	10194	10194
5	11066	11066	11066	11066	11066
15	13653	13653	13653	13653	13653
25	10329	10329	10329	10329	10329
35	4007	4007	4007	4007	4007
45	549	549	549	549	549
55	27	27	27	27	27
65	15	15	15	15	15
75	0	0	0	0	0
85	0	0	0	0	0
90	0	0	0	0	0

**EFFIC: 60.1%**  
ITL TEST #51706  
\*LER = 51.7  
•AEC = \$4.64

#### HRR-09034-15 (Clear Lamp)



CANDLEPOWER DISTRIBUTION					
	0.0	22.5	45.0	67.5	90.0
0	12825	12825	12825	12825	12825
5	12403	12403	12403	12403	12403
15	10448	10448	10448	10448	10448
25	7686	7686	7686	7686	7686
35	4740	4740	4740	4740	4740
45	1995	1995	1995	1995	1995
55	34	34	34	34	34
65	8	8	8	8	8
75	0	0	0	0	0
85	0	0	0	0	0
90	0	0	0	0	0

**EFFIC: 51.3%**  
ITL TEST #52140  
\*LER = 39.3  
•AEC = \$6.10

\* LER (Luminaire Efficacy Rating) = Luminaire Effic. x Total Lamp Lumens x Ballast Factor / Input Watts

• AEC = Annual Energy Cost per 1000 lumens (based on 3000 hours use @ \$0.08 KWH).

### SUBMITTAL DATA

### APPROVAL STAMP

JOB NAME

TYPE

WATTAGE

VOLTAGE

CATALOG NUMBER