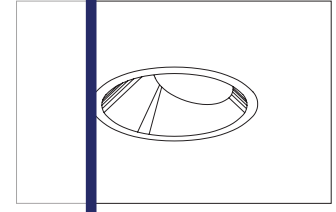


CATALOG #	TYPE	
JOB NAME	WATTAGE	VOLTAGE

7" T6 CERAMIC METAL HALIDE 150 WATT MAXIMUM HRR-07328

Parabolic T6 Adjustable: 3 Spacings  
For Dramatic Highlighting

# THIS PRODUCT IS NO LONGER AVAILABLE



7" Dual Reflector Design

## Specifications

### Lamp

- Designed for adjustable T6 ceramic metal halide lamp.
- Up to 96 CFM, 12,000-15,000 hour life.
- For lower wattages, see Option -43.

### Socket (5kV rated)

- G12 bi-pin base.
- Porcelain body. Silicone leads.

### Reflectors

- Upper: Parabolic specular Alzak® aluminum. Swivels 358° tilts up to 45°.
- Lower: Low brightness specular Alzak® aluminum, self-flanged.
- Optional reflector finishes / colors available.

### Lens: UV Absorbing

- Tempered multiprismatic glass mounted on upper reflector. Standard NFL distribution (0.3 SC).
- See Options for -SPT (0.2 SC) and -MFL (0.6 SC) distributions.

### Electronic Ballast

- Full electronic circuitry provides constant color and constant wattage, ensuring

- consistent performance and long life.
- Input voltage 120V/277V. Input power factor voltage, see options.
- 150 watt standard. Add Option -43 and specify for 100, 70, 39 or Type IC 20 watt.
- Dimming starting temperature 20°C/40°F.
- 240 Volt Input Circuit Breaker with 1.5" minimum clearance. To use use automatic shut-off if rated temperature is exceeded.
- Internally fused.
- Power factor greater than 90%.
- Input current THD less than 15%.
- Maximum 85°C operation, Sound Rated A.

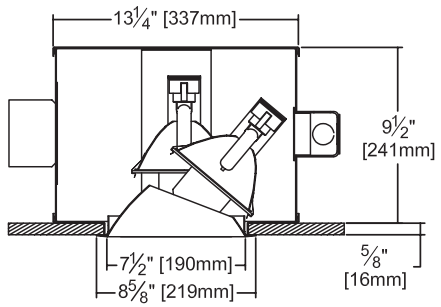
### Aluminum Housing

- Lightweight. Minimizes ceiling load.
- Cool operation: Extends component life.
- Maximum AC input 150VA.
- Temperature rise standard for ballast through removable trim.

- Built-in plaster frame.
- Outlet Box**
- Prewired 14 GA (NEC) galvanized steel, UL listed; with removable insulated cover.
- 1/2" and 3/4" knockouts.
- Installation**
- 27" galvanized hanger bars with adjustable mounting brackets (2) supplied.
- Recesses indoor or outdoor in covered locations.
- UL, C-UL (Canada) Listings**
- Wet, damp or dry locations, covered ceilings.
- Through-branch circuit conductors (6 #12).
- 20 watt only.
- 3 Year Limited Warranty**
- Complete standard fixture, including ballast.

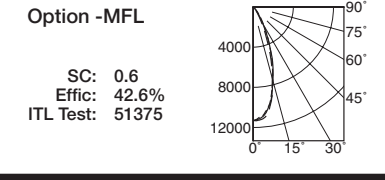
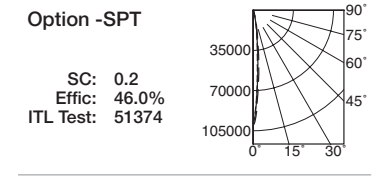
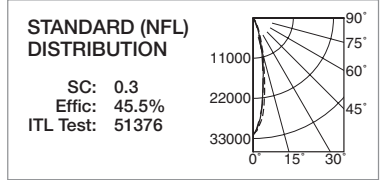
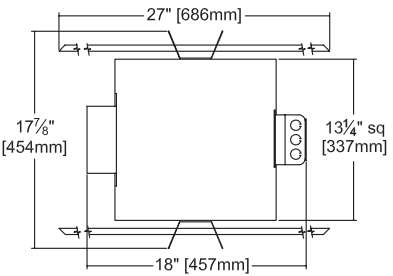
Please consult **QUOTATIONS** for the best alternative.

## Performance at a Glance



Ceiling Cut-out 8" Dia.

PHOTOMETRY SHOWN STRAIGHT DOWN 0° TILT



# THE KIRLIN COMPANY

3401 EAST JEFFERSON AVENUE • DETROIT, MICHIGAN 48207-4232  
(313) 259-6400 • Fax: (313) 259-9409 OR (313) 259-3121 • www.kirlinlighting.com

COMPACT PULSE START  
METAL HALIDE LIGHTING

MAXIMUM WATTAGE  
150

CATALOG NUMBER  
HRR-07328

DUE TO OUR CONTINUING EFFORT TO IMPROVE PRODUCTS, TECHNICAL INFORMATION IS SUBJECT TO CHANGE WITHOUT NOTICE.

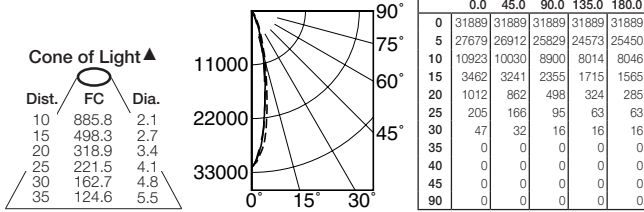
Alzak® is a registered trademark of ALCOA.

Detailed Photometry - Installed Fixture

Photometry from I.T.L., Boulder, CO

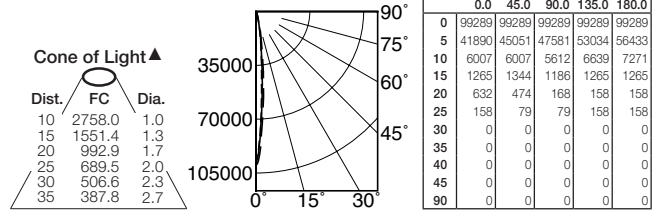
**STANDARD (NFL)**

SC: 0.3  
Effic: 45.5%  
ITL Test: 51376



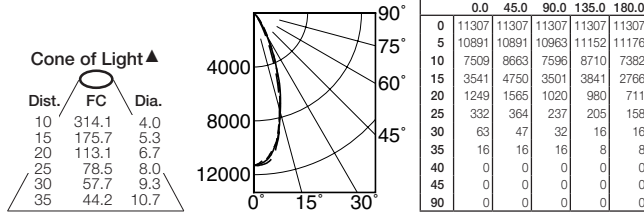
**Option -SPT**

SC: 0.2  
Effic: 46.0%  
ITL Test: 51374



**Option -MFL**

SC: 0.6  
Effic: 42.6%  
ITL Test: 51375



PHOTOMETRY SHOWN  
STRAIGHT DOWN  
0° TILT

Photometry based on: 14,000 lumens - 150W

▲ Cone of Light Key  
Ft. Distance from fixture  
FC Footcandles at nadir (0°)  
Dia. Circle of light at 50% of FC  
Dia. (in ft.) shown is where FC value is half the FC at nadir.

**Options**

**Distributions**

- SPT Spot distribution. (0.2 SC)
- MFL Medium flood distribution. (0.6 SC)

**Lower Reflector (Self-Flanged)**

- 30 All White. (CP x 1.1)
- 31 White flange (only).
- 32 White trim ring to cover larger ceiling opening. Specify outer diameter of ring.
- 45 Gasket above flange. Stops dust streaks on ceiling.
- 69 Wheat specular Alzak. (CP x .92) Consult factory.
- 70 Clear SofTex. (CP x .92)
- 77 Pewter SofTex. (CP x .85) Consult factory.
- 91 Wheat SofTex. (CP x .88) Consult factory.

- 93 Pewter specular Alzak. (CP x .88) Consult factory.
- 94 Custom color. Consult factory.

**Relays, Standbys, Lamps**

- 49 Extra circuit DCB socket (up to 75W). Do not energize simultaneously with main source. Also see Option -LS.
- 65 Electronic standby system and DCB socket (up to 75W). Provides immediate light until CMH restrikes. Also see Options -66 and -LS.
- 66 Electronic time delay standby system and DCB socket (up to 75W). Provides light until CMH reaches 70% output. Also see Option -LS.
- LP With lamp. Specify source, wattage, color temperature / brand. 3000°K standard; consult factory for others.

- LS With T4 DCB tungsten halogen standby lamp (75W). Use only with Options -49, -65 or -66.

**Wattage and Voltage**

- 43 Lower wattage. T6: specify for 100W, 70W, 39W or Type IC 20W.
- 347 347 volt.
- 97 Other input voltage instead. Consult factory.

**Other Options**

- 99 Special modification. Consult factory.
- TA Top access; for servicing from above ceiling.

SUBMITTAL DATA

JOB NAME \_\_\_\_\_  
TYPE \_\_\_\_\_  
WATTAGE \_\_\_\_\_ VOLTAGE \_\_\_\_\_  
CATALOG NUMBER \_\_\_\_\_

APPROVAL STAMP

LIMITED WARRANTY: CATALOGED KIRLIN FIXTURES ARE WARRANTED FREE OF DEFECTS IN WORKMANSHIP OR MATERIAL FOR THREE YEARS FROM DATE OF PURCHASE. INSTALLATION TO N.E.C. IN NORMAL USE. Manufacturer at his option will replace or repair such fixture or refund the purchase price or proportionate amount of the purchase price of the fixture. This warranty is void if the fixture is used for any purpose other than that for which it was designed, or if it is modified, repaired, or if it is used in an environment where it is not intended to be used. This warranty does not extend to any accessories or to any damage to property or to any consequential or incidental damages. This warranty is void if the fixture is used in an environment where it is not intended to be used. This warranty does not extend to any accessories or to any damage to property or to any consequential or incidental damages. This warranty is void if the fixture is used in an environment where it is not intended to be used. This warranty does not extend to any accessories or to any damage to property or to any consequential or incidental damages.