

| | | |
|-----------|---------|---------|
| CATALOG # | TYPE | |
| JOB NAME | WATTAGE | VOLTAGE |

7" T4.5 METAL HALIDE 70 WATT MAXIMUM HRR-07227

X-CELL™ Parabolic Cross Baffle

Features

Lamp

- Designed for vertical T4.5 spiral metal halide lamps. See Option -43 for wiring voltage.

Socket

- Vertical. G8.5 bi-pin. Pulse rated.
- Porcelain body. Silicone leads.

Reflectors

- Upper: Parabolic specular Alzak® aluminum. Fourteen optional reflector finishes available.
- Lower: Self-flanged semi-specular Alzak aluminum with 4 cell parabolic cross baffle.

Lens

- UV absorbing tempered MicroLux glass mounted to upper reflector. Also see Options.

Ballast Assembly: Specify Voltage

- WhisperPack™ fully encapsulated 130°C-rated HPF pulse start ballast.
- Class H, high reactance for 120 volt circuits. Options -65, -66; linear reactor for 277 volt.
- Capacitor and ignitor supplied.
- Electronic ballast available. See Options. (Standard for 20 watt).
- Cool, quiet, long life. Silicone leads.
- Visible and easily serviced in all ceilings including drop wall.

Fuse

- Fuse: primary, per code. (Not required for 70 watt maximum.)
- Acrylic enclosure. 1/2" x 1/2" x 1/2". 100-hour ASTM 5% salt spray test.

- Lightweight. Minimizes ceiling load.
- Capable of operation. Extra long life. Vented.
- Entire aluminum suspended through aperture. Built-in capacitor frame.

Outlet Box

- Prewired 14 GA (NEC) galvanized steel, UL listed; with removable insulated cover.
- 1/2" and 3/4" knockouts.

Installation

- Can be galvanized (for use with galvanized mounting brackets (2) supplied).
- Recesses indoor or outdoor in covered ceiling.

- UL, E-UL, and double listing.
- No strip or dry locations, or forced air.

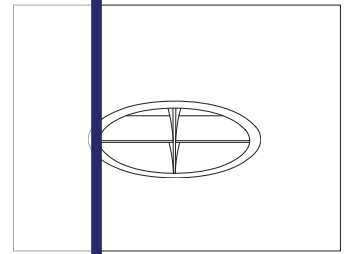
- Through-branch circuit conductors (6 #12).

- Three Year Limited Warranty.
- Complete specification including ballast.

- Mold Protection.
- Per current NEC.

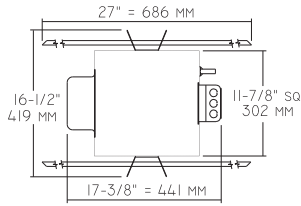
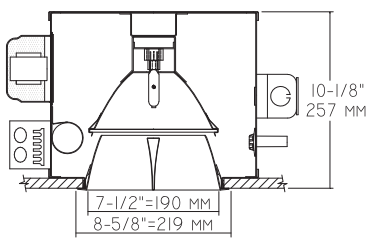
THIS PRODUCT IS NO LONGER AVAILABLE

Please consult **QUOTATIONS** for the best alternative.

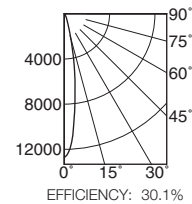


Performance at a Glance

HRR-07227



Ceiling Cut-out
8"



Cone of Light*

| Dist. | FC | Dia. |
|-------|-------|------|
| 6 | 353.6 | 1.7 |
| 8 | 198.9 | 2.3 |
| 10 | 127.3 | 2.9 |
| 12 | 88.4 | 3.5 |
| 14 | 64.9 | 4.1 |
| 16 | 49.7 | 4.7 |

SC: 0.3

Cone of Light Key

- Ft.** Distance from fixture
- FC** Footcandles (average)
- Dia.** Circle of light at 50% of FC
- * Dia. (in ft.) shown is where FC value is half the FC at nadir.

THE KIRLIN COMPANY

3401 EAST JEFFERSON AVENUE • DETROIT, MICHIGAN 48207-4232
(313) 259-6400 • Fax: (313) 259-9409 OR (313) 259-3121 • www.kirlinlighting.com

PULSE START
METAL HALIDE LIGHTING

MAXIMUM WATTAGE

70

CATALOG NUMBER

HRR-07227

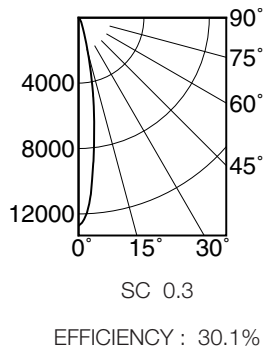
DUE TO OUR CONTINUING EFFORT TO IMPROVE PRODUCTS, TECHNICAL INFORMATION IS SUBJECT TO CHANGE WITHOUT NOTICE.

Alzak® is a registered trademark of ALCOA.

Detailed Photometry - Installed Fixture

Photometry from I.T.L., Boulder, CO

HRR-07227 (T4.5 70 Watt)



| CANDLEPOWER DISTRIBUTION | | | | | |
|--------------------------|-------|-------|-------|-------|-------|
| | 0.0 | 22.5 | 45.0 | 67.5 | 90.0 |
| 0 | 12731 | 12731 | 12731 | 12731 | 12731 |
| 5 | 9673 | 9673 | 9673 | 9673 | 9673 |
| 15 | 2261 | 2261 | 2261 | 2261 | 2261 |
| 25 | 628 | 628 | 628 | 628 | 628 |
| 35 | 264 | 264 | 264 | 264 | 264 |
| 45 | 61 | 61 | 61 | 61 | 61 |
| 55 | 11 | 11 | 11 | 11 | 11 |
| 65 | 0 | 0 | 0 | 0 | 0 |
| 75 | 0 | 0 | 0 | 0 | 0 |
| 85 | 0 | 0 | 0 | 0 | 0 |
| 90 | 0 | 0 | 0 | 0 | 0 |

| COEFFICIENTS OF UTILIZATION | | | | | | | |
|-----------------------------|----|----|----|----|----|----|----|
| RF | 20 | | | | | | |
| | 80 | | | 50 | | | |
| RC | 70 | 50 | 30 | 10 | 50 | 30 | 10 |
| 1 | 35 | 34 | 33 | 33 | 32 | 32 | 31 |
| 2 | 33 | 32 | 31 | 31 | 31 | 30 | 30 |
| 3 | 32 | 31 | 30 | 29 | 30 | 29 | 28 |
| 4 | 31 | 30 | 28 | 28 | 29 | 28 | 27 |
| 5 | 30 | 29 | 27 | 26 | 28 | 27 | 26 |
| 6 | 29 | 28 | 26 | 25 | 24 | 26 | 25 |
| 7 | 29 | 27 | 25 | 25 | 26 | 25 | 24 |
| 8 | 28 | 26 | 25 | 24 | 25 | 24 | 24 |
| 9 | 27 | 25 | 24 | 23 | 25 | 24 | 23 |
| 10 | 26 | 24 | 23 | 22 | 24 | 23 | 22 |

PRORATED FROM ITL TEST #51370
 HRR-06226: *LER=19.5 •AEC=\$12.33
 HRR-06226-96: *LER=23.5 •AEC=\$10.22

* LER = Luminaire Efficiency Rating

LER = $\frac{\text{Luminaire Effic.} \times \text{Total Lamp Lumens} \times \text{Ballast Factor}}{\text{Input Watts}}$

• AEC = Annual Energy Cost per 1000 lumens (based on 3000 hours use @ \$0.08 KWH).

Options

Ballasts

-96 Regulating electronic MH ballast instead.

Wattage and Voltage

-43 Lower wattage. For 39 watt standard bi-pin. Specify voltage. For 20 watt (electronic only) system, consult factory.

-120 120 volt, 60 Hz. ballast.

-277 277 volt, 60 Hz. ballast.

-347 347 volt, 60 Hz. ballast. Consult factory for electronic.

-97 Other voltage ballast instead. Consult factory.

Relays, Standbys, Lamps

-49 Extra circuit DCB socket. Do not energize simultaneously with main source. Also see -LS.

-65 Electronic standby system and DCB socket.

Following HID outage, provides immediate light until HID restrikes. Also see -66 and -LS.

-66 Electronic time delay standby system and DCB socket. Following outage, provides light until HID reaches 70% output. Also see Option -LS.

-LP With lamp. Specify wattage and color temperature. (3000°K standard for MH)

-LS With T4 DCB tungsten halogen standby lamp. Use only with Options -49, -65 or -66.

Reflectors and Trims (Self-Flanged)

-30 All White lower cone or cross baffle.

-31 White flange (only) on cross baffle. (CP x .95)

-32 White oversize trim ring. Specify O.D.

-45 Gasket above reflector flange. Stops dust streaks on ceiling.

-94 Custom color cross baffle. Consult factory.

-WW Wall wash cross baffle reflector assembly instead.

Lenses

-15 Prismatic C#73 flat glass lens instead.

-28 UV absorbing clear tempered glass instead.

Mounting Options

-79 Extension collar for up to 2" thick ceilings.

-82 Sloped ceiling adapter, with mounting hardware. Specify 5° increments up to 30°.

-85 Ceiling Panel; with recessed fixture hole. Lays-in 2' x 2' grid. White.

Other Options

-99 Special modification. Consult factory.

-TA Top access; for servicing from above ceiling.

SUBMITTAL DATA

APPROVAL STAMP

JOB NAME

TYPE

WATTAGE

VOLTAGE

CATALOG NUMBER

LIMITED WARRANTY: CATALOGED KIRLIN FIXTURES ARE WARRANTED FREE OF DEFECTS IN WORKMANSHIP OR MATERIAL FOR THREE YEARS FROM DATE OF PURCHASE. INSTALLATION, MAINTENANCE, AND REPAIR MUST BE PERFORMED BY AN AUTHORIZED SERVICE PERSON. THIS WARRANTY IS VOID IF THE FIXTURE IS DAMAGED BY IMPROPER INSTALLATION, REPAIR, OR MODIFICATION. THE FIXTURE IS SUPPLIED TO THE PURCHASER AS REPRESENTED AND DOES NOT INCLUDE THE DEFENSES OF MANUFACTURE WITHIN THE YEAR OF ORIGINAL INSTALLATION. LIABILITY OF MANUFACTURE IS LIMITED TO THE FOREGOING. MANUFACTURER SHALL NOT BE LIABLE FOR ANY OTHER DAMAGES, DIRECT OR INDIRECT, SUSTAINED OR SUFFERED BY PURCHASER OR ANY PERSON. THIS WARRANTY IS APPLIED TO THE BUYER IN PLACE OF ALL OTHER WARRANTIES, EXPRESSED OR IMPLIED. SELLER DOES NOT WARRANT AS TO MERCHANDISABILITY OR FITNESS FOR A PARTICULAR USE, NOR WILL ANY ORAL STATEMENT CONSTITUTE A WARRANTY OR AFFECT THIS SPECIFIC WARRANTY. ADDITIONAL USE: MANUFACTURE AT THE OPTION WILL REPLACE OR REPAIR SUCH FIXTURE OR REPAIR THE MANUFACTURER WILL RENDER THE WARRANTY VOID.