

Recessed Lensed F-Lamp
 "Pulse Start" Recessed
 Downlights: 50 to 175 Watt



6" 150W
 7" 175W

HRR-06061
HRR-07062

THIS PRODUCT IS NO LONGER AVAILABLE

Please consult

QUOTATIONS

for the best alternative.

Features

Lamp

- Designed for medium base metal halide lamps. See chart below for standard and optional wattages.
- See Option -43 and chart below for lower wattage or HPS availability.

Socket

- Vertical. Medium base. Pulse rated.
- Nickel-plated brass screw shell. Silicone leads. Glazed porcelain.

Reflector

- Specular ellipsoidal Alzak® aluminum.

Trim Assembly

- Seamless tapered black OptiGroove™ white flange. Self-flanged trim.
- UV absorbing tempered prismatic brightness flat glass lens.
- Optional trim finishes available.

Ballast Assembly - Specify Voltage

- Whisper™ fully encapsulated 180°C rated HPS pulse start ballast.

- 0-100 watt: Class H, high ballance for 120 volt application. Class H ballast reactor for 277 volt.
- 175 watt: Super CWA for 120 volt and Options -65, -66, -HL; Class H, linear reactor for 277 volt.
- Capacitor and ignitor supplied.
- Dimming (-39) and electronic (-96) ballasts available. See Options -39 and -96.
- Visible and easily serviced in all ceilings including dry wall.
- Acrylic enameled aluminum.
- Gold, Silver, Bronze, and White finishes available.
- Rustproof. Exceeds 1000 hour ASTM 5% salt spray test.

- Entire luminaire serviced through removable trim assembly.
- Built-in plaster frame.

Outlet Box

- Prewired 14 GA (NEC) galvanized steel, UL listed; with removable insulated cover.
- 1/2" and 3/4" knockouts.

Installation

- 27" galvanized hanger bars supplied (2).
- Fully adjustable universal mounting brackets supplied (2).
- Recesses indoor or outdoor in covered locations.

UL, C-UL (Canada) Listings

- Wet, damp or dry locations, covered ceilings.
- Through-branch circuit conductors (6 #12).
- Three Year Limited Warranty
- Thermal Protection
- Per current NEC

Wattage Availability and Cut-Out Dimensions

Catalog No.	Lamp/Base	Standard Pulse MH	Wattage -24 (HPS)	Option -43: Lower Pulse MH	Wattage -24 (HPS)	Max. Standby Wattage (-49-65-66-LS)	Ceiling Cut-Out Diameter
HRR-06061	ED-17/Med	150	150	50-100	50-100	100	6.5"
HRR-07062	ED-17/Med	175	150	50-150	50-150	100	8.0"

Options

Sources and Ballasts

- 24 HPS ballast instead. See wattage chart above for available wattages. Specify voltage.
- 39 Electronic dimming ballast instead, for pulse start metal halide. Consult factory for wattage and voltage availability.
- 96 Regulating electronic MH ballast instead. Consult factory for availability.

Wattage and Voltage

- 43 Lower wattage: See Option -43 chart for available lower wattages. Specify voltage.
- 120 120 volt, 60 Hz. ballast.
- 277 277 volt, 60 Hz. ballast.
- 347 347 volt, 60 Hz. ballast. Consult factory for dimming or electronic.
- 97 Other voltage ballast instead. Consult factory.

Relays, Standbys, Lamps (see Chart)

- 49 Extra circuit DCB socket. Do not energize simultaneously with main source. Also see -LS.

- 65 Electronic standby system and DCB socket. Following HID outage, provides immediate light until HID restrikes. Also see -66 and -LS.
- 66 Electronic time delay standby system and DCB socket. Following outage, provides light until HID reaches 70% output. Also see Option -LS.
- HL Hi-Lo wiring modification for use with external relay systems (by others). 175 watt. CWA ballast only. Specify system.
- LP With lamp. Specify source, wattage, color temperature, and clear or coated. (3700°K standard for metal halide)
- LS With T-4 DCB tungsten halogen standby lamp. Use only with Options -49, -65 or -66.

Lenses and Trims

- 32 Trim extender. Broadens trim flange O.D. by 1" to cover larger ceiling opening.
- 40 White grooveless flare trim assembly instead.
- 45 Gasket between trim and ceiling.
- 46 Gasket between trim and lens.
- 94 Custom color trim assembly. Consult factory.

- FR Fresnel tempered lens instead.
- FT Flat white trim instead. Standard with UV absorbing tempered prismatic glass or specify optional lens.
- HO Holophane concave lens instead. Not available for HRR-06061.

Mounting Options

- 79 Extension collar for up to 2" thick ceilings.

Other Options

- 99 Special modification. Consult factory.
- TA Top access modification for servicing from above ceiling.

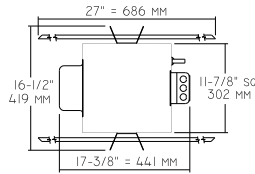


THE KIRLIN COMPANY

3401 EAST JEFFERSON AVENUE • DETROIT, MICHIGAN 48207-4232
 (313) 259-6400 • Fax: (313) 259-9409 or (313) 259-3121 • www.kirlinlighting.com

HRR-06061 HRR-07062

Plan View



Cone of Light Key

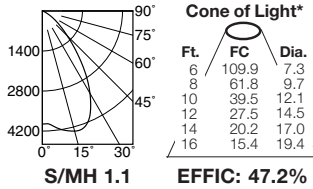
- Ft.** Distance from fixture
- FC** Footcandles (average)
- Dia.** Circle of light at 50% of FC
- Dia. (in ft.) shown is where FC value is half the FC at nadir.

C.U. (Coefficients of Utilization)
Tables are available on request.
Please contact your Kirlin representative.

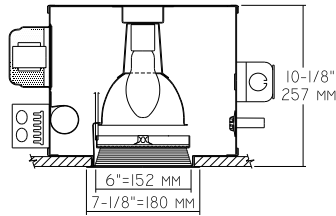
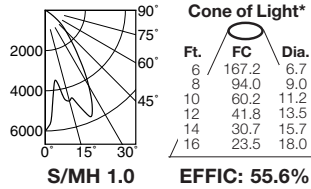
LIMITED WARRANTY: CATALOGED KIRLIN FIXTURES ARE WARRANTED FREE OF DEFECTS IN WORKMANSHIP OR MATERIAL FOR THREE YEARS FROM DATE OF PURCHASE, INSTALLED TO N.E.C. IN NORMAL USE. Manufacturer at his option will replace or repair fixture free of charge if the purchaser provides a representation of the fixture at the office of the manufacturer within three years of purchase and the fixture is found to be defective. This warranty is void if the fixture is altered, modified, or repaired, or if the fixture is used in an application for which it was not intended. Seller does not warrant as to merchantability or fitness for a particular use, nor will any oral statement constitute a warranty or amend this specific warranty. Abnormal use, abuse of the fixture, improper installation, or misuse of the fixture voids this warranty.

HRR-06061 150W

HRR-06061 (Clear Lamp)



HRR-06061-FR (Clear Lamp)



ITL TEST #51603
*LER = 33.9 •AEC = \$7.07

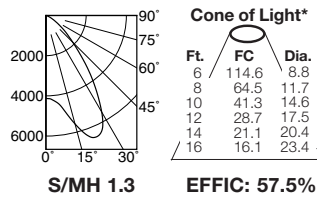
ITL TEST #51601
*LER = 40.0 •AEC = \$6.00

	CANDLEPOWER DISTRIBUTION				
	0.0	22.5	45.0	67.5	90.0
0	3955	3955	3955	3955	3955
5	4025	4025	4025	4025	4025
15	4350	4350	4350	4350	4350
25	3955	3955	3955	3955	3955
35	2590	2590	2590	2590	2590
45	1233	1233	1233	1233	1233
55	511	511	511	511	511
65	124	124	124	124	124
75	16	16	16	16	16
85	0	0	0	0	0
90	0	0	0	0	0

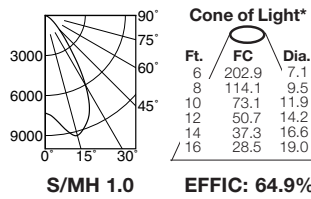
	CANDLEPOWER DISTRIBUTION				
	0.0	22.5	45.0	67.5	90.0
0	6018	6018	6018	6018	6018
5	4403	4403	4403	4403	4403
15	4665	4665	4665	4665	4665
25	5558	5558	5558	5558	5558
35	3040	3040	3040	3040	3040
45	1458	1458	1458	1458	1458
55	497	497	497	497	497
65	100	100	100	100	100
75	7	7	7	7	7
85	0	0	0	0	0
90	0	0	0	0	0

HRR-07062 175W

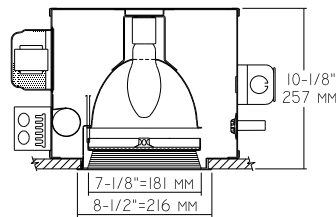
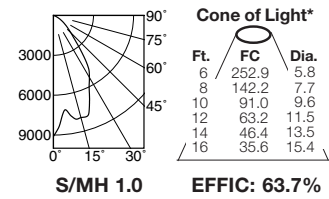
HRR-07062 (Clear Lamp)



HRR-07062-FR (Clear Lamp)



HRR-07062-HO (Clear Lamp)



ITL TEST #51600
*LER = 45.5 •AEC = \$5.27

ITL TEST #51623
*LER = 51.4 •AEC = \$4.67

ITL TEST #51928
*LER = 50.4 •AEC = \$4.76

	CANDLEPOWER DISTRIBUTION				
	0.0	22.5	45.0	67.5	90.0
0	4126	4126	4126	4126	4126
5	4239	4239	4239	4239	4239
15	5584	5584	5584	5584	5584
25	6452	6452	6452	6452	6452
35	4198	4198	4198	4198	4198
45	1902	1902	1902	1902	1902
55	772	772	772	772	772
65	249	249	249	249	249
75	39	39	39	39	39
85	4	4	4	4	4
90	0	0	0	0	0

	CANDLEPOWER DISTRIBUTION				
	0.0	22.5	45.0	67.5	90.0
0	7305	7305	7305	7305	7305
5	7727	7727	7727	7727	7727
15	9308	9308	9308	9308	9308
25	7828	7828	7828	7828	7828
35	3885	3885	3885	3885	3885
45	1489	1489	1489	1489	1489
55	624	624	624	624	624
65	220	220	220	220	220
75	33	33	33	33	33
85	0	0	0	0	0
90	0	0	0	0	0

	CANDLEPOWER DISTRIBUTION				
	0.0	22.5	45.0	67.5	90.0
0	9103	9103	9103	9103	9103
5	7570	7570	7570	7570	7570
15	7955	7955	7955	7955	7955
25	6358	6358	6358	6358	6358
35	4312	4312	4312	4312	4312
45	1843	1843	1843	1843	1843
55	898	898	898	898	898
65	313	313	313	313	313
75	14	14	14	14	14
85	0	0	0	0	0
90	0	0	0	0	0

* LER (Luminaire Efficacy Rating) = Luminaire Effic. x Total Lamp Lumens x Ballast Factor / Input Watts

• AEC = Annual Energy Cost per 1000 lumens (based on 3000 hours use @ \$0.08 KWH).

SUBMITTAL DATA

APPROVAL STAMP

JOB NAME

TYPE

WATTAGE

VOLTAGE

CATALOG NUMBER