

Recessed Lensed T-6 Bi-Pin  
 "Pulse Start" Parabolic  
 Adjustables: 39 to 150 Watt



6" 150W  
 7" 150W

**HRR-06056**  
**HRR-07057**

# THIS PRODUCT IS NO LONGER AVAILABLE

## PLEASE CONSULT QUOTATIONS FOR THE BEST ALTERNATIVE.

### Features

#### Lamp

- Designed for metal halide T-6 bi-pin lamps. See chart below for standard and optional wattages.
- See Option -43 and chart below for lower wattage.

#### Socket

- Pulse rated. Silicone leads.
- G12 bi-pin. Porcelain body.
- Adjustable.

#### Reflectors

- Upper: Specular Alzak® aluminum. Silhouettes 358°, tilts up to 45°.
- Lower: Specular Alzak, self-flanged.
- Optional reflector finishes available.

#### Lens

- UV absorbing clear tempered MicroLux glass mounted to upper reflector. Also see Options.

#### Class Assembly (See Voltage)

- This track™ full voltage ballast is 180° rated.
- Class H, high reactance for 120 volt and Options -65, -66; linear reactor for 277 volt.
- Capacitor and ignitor supplied.
- Dimming (-39) and electronic (-96) ballasts available. See Options.

#### Mounting (See Lens)

- Mounting extenders for dry wall, including dry wall.
- Acrylic enameled aluminum.

- Cool: Dissipates heat across entire surface.
- Wet, damp or dry locations, covered ceilings.
- Through-branch circuit conductors (6 #12).
- Three Year Limited Warranty.
- Per current NEC.

- Entire luminaire serviced from below through removable reflectors.
- Built-in plaster frame.

#### Outlet Box

- Prewired 14 GA (NEC) galvanized steel, UL listed; with removable insulated cover.
- 1/2" and 3/4" knockouts.

#### Installation

- 27" galvanized hanger bars supplied (2).
- Fully adjustable universal mounting brackets supplied (2).
- Recesses indoor or outdoor in covered locations.

#### UL, C-UL (Canada) Listings

- Wet, damp or dry locations, covered ceilings.
- Through-branch circuit conductors (6 #12).

#### Three Year Limited Warranty

- Complete standard fixture, including ballast.
- Limited protection.
- Per current NEC.

### Wattage Availability and Cut-Out Dimensions

Catalog No.	Lamp/Base	Standard Wattage Pulse MH	Option -43: Lower Wattage Pulse MH	Max. Standby Wattage (-49-65-66)	Ceiling Cut-Out Diameter
HRR-06056	T-6/G12 bi-pin	150	39-70	100	6.5"
HRR-07057	T-6/G12 bi-pin	150	39-70	100	8.0"

### Options

#### Ballasts

- 39 Electronic dimming ballast instead, for pulse start metal halide. Consult factory for wattage and voltage availability.
- 96 Regulating electronic MH ballast instead.

#### Wattage and Voltage

- 43 Lower wattage: See Option -43 chart above for available lower wattages. Specify voltage.
- 120 120 volt, 60 Hz. ballast.
- 277 277 volt, 60 Hz. ballast.
- 347 347 volt, 60 Hz. ballast. Consult factory for dimming or electronic.
- 97 Other voltage ballast instead. Consult factory.

#### Relays, Standbys, Lamps (see Chart)

- 49 Extra circuit DCB socket. Do not energize simultaneously with main source. Also see -LS.
- 65 Electronic standby system and DCB socket. Following HID outage, provides immediate light until HID restrikes. Also see -66 and -LS.

- 66 Electronic time delay standby system and DCB socket. Following outage, provides light until HID reaches 70% output. Also see Option -LS.
- LP With lamp. Specify wattage and color temperature, and clear or coated. (3000°K standard for T-6 metal halide)
- LS With T-4 DCB tungsten halogen standby lamp. Use only with Options -49, -65 or -66.

#### Reflectors and Trims (Self-Flanged)

- 16 Champagne Gold specular Alzak lower reflector. (CP x .95)
- 30 All White lower reflector. (CP x .95)
- 31 White flange (only) on lower reflector.
- 32 Trim extender. Broadens trim flange O.D. by 1" to cover larger ceiling opening.
- 45 Gasket above reflector flange. Stops dust streaks on ceiling.
- 63 Dune specular Alzak lower reflector. (CP x .93)
- 69 Wheat specular Alzak lower reflector. (CP x .92)
- 70 SofTex Clear etched lower reflector. (CP x .92)
- 71 SofTex Dune etched lower reflector. (CP x .89)
- 72 Black specular Alzak lower reflector. (CP x .77)

- 77 SofTex Pewter etched lower reflector. (CP x .85)
- 90 SofTex Champagne Gold etched lower reflector. (CP x .90)
- 91 SofTex Wheat etched lower reflector. (CP x .88)
- 92 Umber specular Alzak lower reflector. (CP x .83)
- 93 Pewter specular Alzak lower reflector. (CP x .88)
- 94 Custom color lower reflector. Consult factory.

#### Lenses

- 15 Prismatic C#73 flat glass lens instead.
- 28 UV absorbing clear tempered glass instead.

#### Mounting Options

- 85 Ceiling Panel; with recessed fixture hole. Lays-in 2' x 2' grid.

#### Other Options

- 99 Special modification. Consult factory.
- TA Top access modification for servicing from above ceiling.



### THE KIRLIN COMPANY

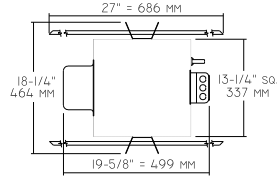
3401 EAST JEFFERSON AVENUE • DETROIT, MICHIGAN 48207-4232  
 (313) 259-6400 • Fax: (313) 259-9409 or (313) 259-3121 • www.kirlinlighting.com

THE KIRLIN COMPANY RESERVES THE RIGHT TO CHANGE, WITHOUT NOTICE, DETAILS OR SPECIFICATIONS IN PRODUCT DESIGN.

Alzak® is a registered trademark of ALCOA.

### HRR-06056 HRR-07057

Plan View



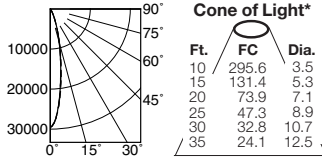
- Cone of Light Key**
- Ft.** Distance from fixture
  - FC** Footcandles (average)
  - Dia.** Circle of light at 50% of FC
  - \* Dia. (in ft.) shown is where FC value is half the FC at nadir.

C.U. (Coefficients of Utilization) Tables are available on request. Please contact your Kirlin representative.

LIMITED WARRANTY: CATALOGED KIRLIN FIXTURES ARE WARRANTED FREE OF DEFECTS IN WORKMANSHIP OR MATERIAL FOR THREE YEARS FROM DATE OF PURCHASE. INSTALLED TO N.E.C. IN NORMAL USE. Manufacturer at the option will replace or repair fixture or refund the purchase price on presentation of proof of purchase and defective fixture at the office of manufacturer within three years of original shipment. Liability for manufacturer is limited to the original, and manufacturer shall not be liable for any other damages, direct or indirect, sustained or suffered by purchaser or any person. This warranty is supplied at the option of manufacturer and other warranties, expressed or implied, Seller does not warrant as to merchantability of fitness for particular use, nor will any oral statement constitute a warranty or amend this specific warranty. Abnormal use, abuse of the fixture, improper installation, or repair, or modification of the fixture will void written authorization from the manufacturer will render the warranty void.

### HRR-06056 150W

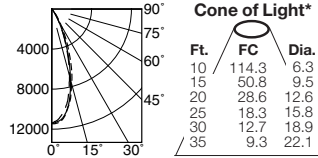
#### HRR-06056



S/MH 0.3 EFFIC: 41.4%  
ITL TEST #51373  
\*LER = 29.8 \*AEC = \$8.06

	CANDLEPOWER DISTRIBUTION				
	0.0	45.0	90.0	135.0	180.0
0	29556	29556	29556	29556	29556
5	24312	24778	24051	24257	24344
15	8884	9097	8560	8718	8647
25	2229	2268	2158	2071	2102
35	427	387	332	285	300
45	95	71	55	32	32
55	16	0	0	0	0
65	0	0	0	0	0
75	0	0	0	0	0
85	0	0	0	0	0
90	0	0	0	0	0

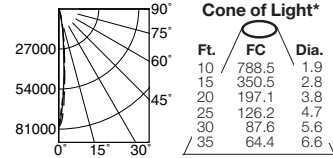
#### HRR-06056-15



S/MH 0.6 EFFIC: 38.0%  
ITL TEST #51372  
\*LER = 27.3 \*AEC = \$8.79

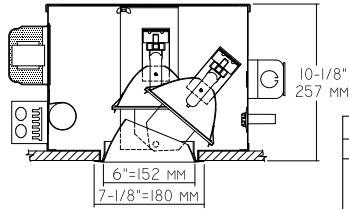
	CANDLEPOWER DISTRIBUTION				
	0.0	45.0	90.0	135.0	180.0
0	11430	11430	11430	11430	11430
5	11208	11223	11081	10844	10717
15	7730	8821	7256	7761	6924
25	3493	4070	2806	3375	2671
35	980	1043	664	735	506
45	237	213	119	63	47
55	47	32	24	16	8
65	0	0	0	0	0
75	0	0	0	0	0
85	0	0	0	0	0
90	0	0	0	0	0

#### HRR-06056-28



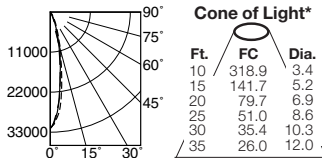
S/MH 0.2 EFFIC: 42.6%  
ITL TEST #51371  
\*LER = 30.6 \*AEC = \$7.84

	CANDLEPOWER DISTRIBUTION				
	0.0	45.0	90.0	135.0	180.0
0	78853	78853	78853	78853	78853
5	43787	43155	41258	44893	46948
15	7113	6560	5454	6481	6797
25	1581	1502	1107	869	790
35	316	158	158	158	158
45	0	0	0	0	0
55	0	0	0	0	0
65	0	0	0	0	0
75	0	0	0	0	0
85	0	0	0	0	0
90	0	0	0	0	0



### HRR-07057 150W

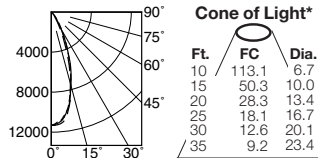
#### HRR-07057



S/MH 0.3 EFFIC: 45.5%  
ITL TEST #51376  
\*LER = 32.7 \*AEC = \$7.34

	CANDLEPOWER DISTRIBUTION				
	0.0	45.0	90.0	135.0	180.0
0	31889	31889	31889	31889	31889
5	27679	26912	25829	24573	25450
15	10923	10030	8900	8014	8046
25	3462	3241	2355	1715	1565
35	1012	862	498	324	285
45	205	166	95	63	63
55	47	32	16	16	16
65	0	0	0	0	0
75	0	0	0	0	0
85	0	0	0	0	0
90	0	0	0	0	0

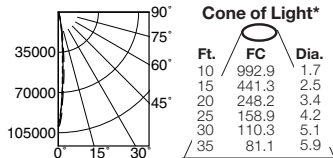
#### HRR-07057-15



S/MH 0.6 EFFIC: 42.6%  
ITL TEST #51375  
\*LER = 30.6 \*AEC = \$7.84

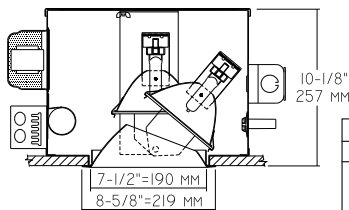
	CANDLEPOWER DISTRIBUTION				
	0.0	45.0	90.0	135.0	180.0
0	11307	11307	11307	11307	11307
5	10891	10891	10963	11152	11176
15	7509	8663	7596	8710	7382
25	3541	4750	3501	3841	2766
35	1249	1565	1020	980	711
45	332	364	237	205	158
55	63	47	32	16	16
65	16	16	16	8	8
75	0	0	0	0	0
85	0	0	0	0	0
90	0	0	0	0	0

#### HRR-07057-28



S/MH 0.2 EFFIC: 46.0%  
ITL TEST #51374  
\*LER = 33.1 \*AEC = \$7.26

	CANDLEPOWER DISTRIBUTION				
	0.0	45.0	90.0	135.0	180.0
0	99289	99289	99289	99289	99289
5	41890	45051	47581	53034	56433
15	6007	6007	5612	6639	7271
25	1265	1344	1186	1265	1265
35	632	474	168	158	158
45	158	79	79	158	158
55	0	0	0	0	0
65	0	0	0	0	0
75	0	0	0	0	0
85	0	0	0	0	0
90	0	0	0	0	0



\* LER (Luminaire Efficacy Rating) = Luminaire Effic. x Total Lamp Lumens x Ballast Factor / Input Watts

\* AEC = Annual Energy Cost per 1000 lumens (based on 3000 hours use @ \$0.08 KWH).

## SUBMITTAL DATA

## APPROVAL STAMP

JOB NAME

TYPE

WATTAGE

VOLTAGE

CATALOG NUMBER