

Recessed Open Appearance
Lensed E-Lamp Fixture
Horizontal Downlight:
50 to 100 Watts

7" 100W HRR-07044

THIS PRODUCT IS NO LONGER AVAILABLE

PLEASE CONSULT QUOTATIONS FOR THE BEST ALTERNATIVE.

Features

Lamp

- Designed for medium base metal halide E-lamps. See chart below for standard and optional wattages.
- See Option -43 and chart below for lower wattage or HPS availability.

Socket

- Horizontal Medium base. Pulse rated porcelain.
- Glazed porcelain.
- Nickel-plated brass screw shell. Silicone leads.

Reflectors

- Upper: Ellipsoidal specular Alzak aluminum.
- Fourteen optional lower reflector finishes.
- Lower cross baffle: Self-flanged specular Alzak aluminum with 4-cross parabolic cross baffle.

Lens

- UV absorbing clear tempered glass mounted to upper reflector. Also see Options.

Class A Assembly Options Voltage

- Class H, high reactance for 120 volt and Options -65, -66; linear reactor for 277 volt.
- Capacitor and ignitor supplied.
- Dimming (-39) and electronic (-96) ballasts available. See Options.
- Visible and easily serviced in all ceilings including dry wall.
- Acrylic enameled aluminum.
- Cool: Dissipates heat across entire surface.
- Dustproof: Exceeds 1000 hour ASTM 9% salt spray test.

- Entire luminaire serviced from below through removable reflectors.
- Built-in 2" extended plaster frame for thick ceilings.

Outlet Box

- Wired 14 GA (NEC) galvanized steel, UL listed; with removable insulated cover.
- 1/2" and 3/4" knockouts.

Installation

- 27" galvanized hanger bars supplied (2).
- Fully adjustable universal mounting brackets supplied (2).
- Recesses indoor or outdoor in covered locations.

UL, C-UL (Canada) Listings

- Wet, damp or dry locations, covered ceilings.
- Through-branch circuit conductors (6 #12).

Three Year Limited Warranty

- Standard fixture, including ballast.
- Thermal Protection
- Per current NEC

Wattage / Lamp Availability and Cut-out Dimensions

Catalog No.	Lamp/Base	Standard Wattage		Option -43: Lower Wattage		Max. Standby Wattage (-49-65-66-LS)	Ceiling Cut-Out Diameter
		Pulse MH	-24 (HPS)	Pulse MH	-24 (HPS)		
HRR-07043	ED-17/Med	150	150	50-125	35-100	100	8.0"
HRR-07044	ED-17/Med	100	100	50-70	35-70	100	8.0"

Options

Sources and Ballasts

- 24 HPS ballast instead. See wattage chart above for available wattages. Specify voltage.
- 39 Electronic dimming ballast instead, for pulse start metal halide. Consult factory for wattage and voltage availability.
- 96 Regulating electronic MH ballast instead.

Wattage and Voltage

- 43 Lower wattage: See Option -43 chart above for available lower wattages. Specify voltage.
- 120 120 volt, 60 Hz. ballast.
- 277 277 volt, 60 Hz. ballast.
- 347 347 volt, 60 Hz. ballast. Consult factory for dimming or electronic.
- 97 Other voltage ballast instead. Consult factory.

Relays, Standbys, Lamps (See Chart)

- 49 Extra circuit DCB socket. Do not energize simultaneously with main source. Also see -LS.
- 65 Electronic standby system and DCB socket. Following HID outage, provides immediate light until HID restrikes. Also see -66 and -LS.

- 66 Electronic time delay standby system and DCB socket. Following outage, provides light until HID reaches 70% output. Also see Option -LS.
- LP With lamp. Specify source, wattage, color temperature, and clear or coated. (3700°K standard for metal halide) Consult factory for other color temperatures.
- LS With T-4 DCB tungsten halogen standby lamp. Use only with Options -49, -65 or -66.

Reflectors and Trims (Self-Flanged) (Consult factory for HRR-07044)

- 16 Champagne Gold specular Alzak lower cone. (CP x .95)
- 30 All White lower cone or cross baffle. (CP x .95)
- 31 White flange (only) on lower cone or cross baffle.
- 32 Trim extender. Broadens trim flange O.D. by 1" to cover larger ceiling opening.
- 45 Gasket above reflector flange. Stops dust streaks on ceiling.
- 63 Dune specular Alzak lower cone. (CP x .93)
- 69 Wheat specular Alzak lower cone. (CP x .92)
- 70 SofTex Clear etched lower cone. (CP x .92)
- 71 SofTex Dune etched lower cone. (CP x .89)
- 72 Black specular Alzak lower cone. (CP x .77)

- 77 SofTex Pewter etched lower cone. (CP x .85)
- 90 SofTex Champagne Gold etched lower cone. (CP x .90)
- 91 SofTex Wheat etched lower cone. (CP x .88)
- 92 Umber specular Alzak lower cone. (CP x .83)
- 93 Pewter specular Alzak lower cone. (CP x .88)
- 94 Custom color lower cone or cross baffle. Consult factory.
- OG OptiGroove black seamless tapered aluminum lower cone. White trim. (CP x .75)
- WWW Wall wash cross baffle assembly instead.

Lenses

- 15 Prismatic C#73 flat glass lens instead.
- ML UV absorbing tempered MicroLux glass instead.

Mounting Options

- 78 Housing modified for concrete pour.
- 82 Sloped ceiling adapter, with mounting hardware. Specify 5° increments up to 30°.
- 85 Ceiling Panel; with recessed fixture hole. Lays-in 2' x 2' grid. White.

Other Options

- 99 Special modification. Consult factory.

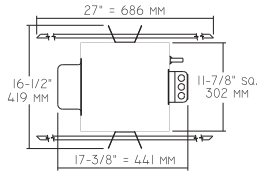


THE KIRLIN COMPANY

3401 EAST JEFFERSON AVENUE • DETROIT, MICHIGAN 48207-4232
(313) 259-6400 • Fax: (313) 259-9409 or (313) 259-3121 • www.kirlinlighting.com

HRR-07044

Plan View



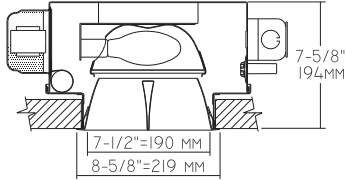
Cone of Light Key

- Ft.** Distance from fixture
- FC** Footcandles (average)
- Dia.** Circle of light at 50% of FC
- * Dia. (in ft.) shown is where FC value is half the FC at nadir.

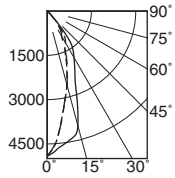
C.U. (Coefficients of Utilization) Tables are available on request. Please contact your Kirlin representative.

HRR-07044 100W

FOR CONCRETE POUR VERSION, SEE OPTION -78



HRR-07044 (Coated Lamp)



- 0° S/MH 0.5
- 90° S/MH 0.7
- 180° S/MH 0.5

EFFIC: 41.6%

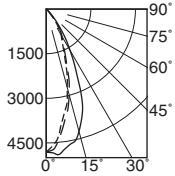
ITL TEST #51732
 *LER = 23.6
 *AEC = \$10.17

Cone of Light*

Ft.	FC	Dia.
6	136.6	4.1
8	76.9	5.5
10	49.2	6.9
12	34.2	8.2
14	25.1	9.6
16	19.2	11.0

	CANDLEPOWER DISTRIBUTION				
	0.0	45.0	90.0	135.0	180.0
0	4919	4919	4919	4919	4919
5	4236	4518	4640	4447	4223
15	2585	3712	4018	3641	2611
25	1434	2131	2220	2214	1421
35	999	1113	1484	1126	781
45	128	121	198	166	179
55	13	13	13	13	13
65	0	0	0	0	0
75	0	0	0	0	0
85	0	0	0	0	0
90	0	0	0	0	0

HRR-07044-15 (Clear Lamp)



- 0° S/MH 0.5
- 90° S/MH 0.8
- 180° S/MH 0.6

EFFIC: 37.9%

ITL TEST #51733
 *LER = 22.6
 *AEC = \$10.62

Cone of Light*

Ft.	FC	Dia.
6	133.6	4.5
8	75.1	6.0
10	48.4	7.4
12	33.4	8.9
14	24.5	10.4
16	18.8	11.9

	CANDLEPOWER DISTRIBUTION				
	0.0	45.0	90.0	135.0	180.0
0	4808	4808	4808	4808	4808
5	4378	4671	4911	4756	4479
15	2718	3819	4256	3855	2974
25	1300	2208	2448	2253	1393
35	656	786	957	899	704
45	71	99	174	122	102
55	3	1	10	4	3
65	0	0	0	0	0
75	0	0	0	0	0
85	0	0	0	0	0
90	0	0	0	0	0

* LER (Luminaire Efficacy Rating) = Luminaire Effic. x Total Lamp Lumens x Ballast Factor / Input Watts

* AEC = Annual Energy Cost per 1000 lumens (based on 3000 hours use @ \$0.08 KWH).

SUBMITTAL DATA

APPROVAL STAMP

JOB NAME

TYPE

WATTAGE

VOLTAGE

CATALOG NUMBER

LIMITED WARRANTY: CATALOGED KIRLIN FIXTURES ARE WARRANTED FREE OF DEFECTS IN WORKMANSHIP OR MATERIAL FOR THREE YEARS FROM DATE OF PURCHASE. INSTALLATION TO N.E.C. IN NORMAL USE. Manufacturer at its option will replace or repair, free of charge, the fixture or any component thereof, which may be defective in workmanship or material, provided that the fixture or component is returned to the manufacturer with proof of purchase or a receipt from a qualified electrician or other licensed professional. This warranty is limited to the original purchaser and does not extend to the end user. This warranty is not valid if the fixture is used for other than the intended purpose or if it is modified, altered, repaired, or used in an application for which it was not designed. This warranty is void if the fixture is used in an application for which it was not designed, or if it is modified, altered, repaired, or used in an application for which it was not designed. This warranty is void if the fixture is used in an application for which it was not designed, or if it is modified, altered, repaired, or used in an application for which it was not designed.