

Recessed Lensed Flood Lamp
"Pulse Start" Parabolic
Downlights: 50 to 200 Watt

THIS PRODUCT IS NO LONGER AVAILABLE

- 7" 175W HRR-07036
- 7" 200W HRR-07037
- 8" 200W HRR-08038

Features

Lamp

- Designed for metal halide E-lamps, reaches below for standard and optional wattage.
- See Option -43 and chart below for lower wattage for HPS availability.

Socket

- Vertical, pulse rated.
- Glazed porcelain. Silicone leads.
- Nickel-plated brass screw shell.

Reflectors

- Upper: Parabolic specular Alzak® aluminum.
- Lower cross baffle (HRR-07036 only): Self-flanged semi-specular Alzak aluminum with cell parabolic cross baffle.
- Lower: Low brightness parabolic specular Alzak aluminum, self-flanged.
- Fourteen optic reflector finishes available.

Lens

- UV absorbing tempered Microlox glass mounted to upper reflector. Also see Options.

PLEASE CONSULT QUOTATIONS FOR THE BEST ALTERNATIVE

Ballast Assembly: Specific Voltage

- Discharge Pusk™ full enclosure, 80°C coated, E-F pulse start ballast.
- 50-150 watt, Class F; 175-200 watt, Class H.
- 175-200 watt: Super CWA for 120 volt and Options -65, -66; linear reactor for 277 volt.
- 175-200 watt: Super CWA for 120 volt and Options -65, -66, -HL; Class H, linear reactor for 277 volt.
- Capacitor and ignitor supplied.
- Dimming (39) for metal halide ballast available. See Options.
- Cool, quiet, long-life. Silicone leads.
- Visible and easily accessible in all ceilings including drop ceilings.
- Fused primary. Renewable. Not for 400 volt.

Housing

- Anodized or painted aluminum. Ventilated.
- Heat sink states for 100% duty cycle.
- Rustproof: Exceeds 1000 hour ASTM 5% salt spray test.

- Entire luminaire serviced from below through removable reflectors.
- Built-in plaster frame.

Outlet Box

- Prewired 14 GA (NEC) galvanized steel, UL listed; with removable insulated cover.
- 1/2" and 3/4" knockouts.

Installation

- 27" galvanized hanger bars supplied (2).
- Fully adjustable universal mounting brackets supplied (2).
- Recesses indoor or outdoor in covered locations.

UL, C-UL (Canada) Listings

- Wet, damp or dry locations, covered ceilings.
- Through-branch circuit conductors (6 #12).
- Three Year Limited Warranty
- Thermal Protection
- Per current NEC

Wattage Availability and Cut-Out Dimensions

| Catalog No. | Lamp/Base | Standard Wattage | | Option -43: Lower Wattage | | Max. Standby Wattage (-49-65-66-LS) | Ceiling Cut-Out Diameter |
|-------------|-----------|------------------|-----------|---------------------------|-----------|-------------------------------------|--------------------------|
| | | PulseMH | -24 (HPS) | PulseMH | -24 (HPS) | | |
| HRR-07036 | ED-17/Med | 175 | 150 | 50-150 | 35-150 | 100 | 8.0" |
| HRR-07037 | ED-17/Med | 200 | 150 | 50-175 | 35-150 | 100 | 8.0" |
| HRR-08038 | ED-17/Med | 200 | 150 | 50-175 | 35-150 | 100 | 9.0" |

Options

Sources and Ballasts

- 24 HPS ballast instead. See wattage chart above for available wattages. Specify voltage.
- 39 Electronic dimming ballast instead, for pulse start metal halide. Consult factory for wattage and voltage availability.
- 96 Regulating electronic MH ballast instead. Consult factory for availability in 175W or above.

Wattage and Voltage

- 43 Lower wattage: See Option -43 chart above for available lower wattages. Specify voltage.
- 120 120 volt, 60 Hz. ballast.
- 277 277 volt, 60 Hz. ballast.
- 347 347 volt, 60 Hz. ballast. Consult factory for dimming or electronic.
- 97 Other voltage ballast instead. Consult factory.

Relays, Standby, Lamps (See Chart)

- 49 Extra circuit DCB socket. Do not energize simultaneously with main source. Also see -LS.
- 65 Electronic standby system and DCB socket. Following HID outage, provides immediate light until HID restrikes. Also see -66 and -LS.

- 66 Electronic time delay standby system and DCB socket. Following outage, provides light until HID reaches 70% output. Also see Option -LS.
- HL Hi-Lo wiring modification for use with external relay systems (by others). 175 watt or above. CWA ballast only. Specify system.
- LP With lamp. Specify source, wattage, color temperature, and clear or coated. (3700°K standard for metal halide)
- LS With T-4 DCB tungsten halogen standby lamp. Use only with Options -49, -65 or -66.

Reflectors and Trims (Self-Flanged) (Consult factory for HRR-07036)

- 16 Champagne Gold Alzak lower reflector. (CP x .95)
- 30 All White lower reflector or cross baffle. (CP x .95)
- 31 White flange on lower reflector or cross baffle.
- 32 Trim extender. Broadens trim flange O.D. by 1" to cover larger ceiling opening.
- 45 Gasket above reflector flange. Stops dust streaks.
- 63 Dune specular Alzak lower reflector. (CP x .93)
- 69 Wheat specular Alzak lower reflector. (CP x .92)
- 70 SofTex Clear etched lower reflector. (CP x .92)
- 71 SofTex Dune etched lower reflector. (CP x .89)
- 72 Black specular Alzak lower reflector. (CP x .77)
- 77 SofTex Pewter etched lower reflector. (CP x .85)

- 90 SofTex Champagne Gold etched lower reflector. (CP x .90)
- 91 SofTex Wheat etched lower reflector. (CP x .88)
- 92 Umber specular Alzak lower reflector. (CP x .83)
- 93 Pewter specular Alzak lower reflector. (CP x .88)
- 94 Custom color lower reflector or cross baffle. Consult factory.
- OG OptiGroove black seamless tapered aluminum lower reflector. White trim. (CP x .75) Not available for HRR-07036.
- WW Wall wash cross baffle reflector assembly instead for HRR-07036.

Lenses

- 15 Prismatic C#73 flat glass lens instead.
- 28 UV absorbing clear tempered glass instead.

Mounting Options

- 79 Extension collar for up to 2" thick ceilings.
- 82 Sloped ceiling adapter, with mounting hardware. Specify 5° increments up to 30°.
- 85 Ceiling Panel; with recessed fixture hole. Lays-in 2' x 2' grid.

Other Options

- 99 Special modification. Consult factory.
- TA Top access; for servicing from above ceiling.



THE KIRLIN COMPANY

3401 EAST JEFFERSON AVENUE • DETROIT, MICHIGAN 48207-4232
(313) 259-6400 • Fax: (313) 259-9409 or (313) 259-3121 • www.kirlinlighting.com

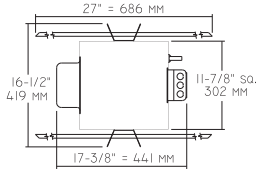
PS MET HALIDE
REV APRIL 2008

THE KIRLIN COMPANY RESERVES THE RIGHT TO CHANGE, WITHOUT NOTICE, DETAILS OR SPECIFICATIONS IN PRODUCT DESIGN.

Alzak® is a registered trademark of ALCOA.

HRR-07036
HRR-07037
HRR-08038

Plan View

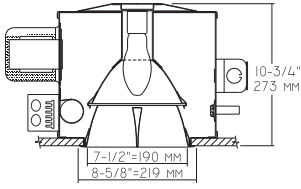


Cone of Light Key
Ft. Distance from fixture
FC Footcandles (average)
Dia. Circle of light at 50% of FC
 * Dia. (in ft.) shown is where FC value is half the FC at nadir.

C.U. (Coefficients of Utilization) Tables are available on request. Please contact your Kirlin representative.

LIMITED WARRANTY: CATALOGED KIRLIN FIXTURES ARE WARRANTED FREE OF DEFECTS IN WORKMANSHIP OR MATERIAL FOR THREE YEARS FROM DATE OF PURCHASE. INSTALLED TO N.E.C. IN NORMAL USE. Manufacturer at its option will replace or repair, at no cost to the purchaser, any defective product. This warranty is void if the purchaser or installer does not use the fixtures in accordance with the manufacturer's instructions. Kirlin Lighting Inc. is not responsible for any other damages, loss or injury resulting from the use of its products. This warranty is limited to the original purchaser and does not constitute a warranty or amend this specific warranty. Abnormal use, abuse or other improper installation, modification, or alteration of the fixture without prior written authorization from the manufacturer will render the warranty void.

HRR-07036 1750W



HRR-07036 (Clear Lamp)

--- 0° S/MH 0.3
 --- 45° S/MH 0.3
 --- 90° S/MH 0.3

EFFIC: 30.3%
ITL TEST #51725
***LER = 24.0 *AEC = \$10.01**

| CANDLEPOWER DISTRIBUTION | | | | | |
|--------------------------|-------|-------|-------|-------|-------|
| | 0.0 | 22.5 | 45.0 | 67.5 | 90.0 |
| 0 | 35018 | 35018 | 35018 | 35018 | 35018 |
| 5 | 28328 | 26723 | 29640 | 29844 | 26538 |
| 15 | 6370 | 6574 | 6542 | 6567 | 5924 |
| 25 | 1618 | 1739 | 1694 | 1599 | 1363 |
| 35 | 675 | 612 | 580 | 573 | 535 |
| 45 | 166 | 115 | 96 | 121 | 128 |
| 55 | 26 | 26 | 13 | 19 | 26 |
| 65 | 0 | 0 | 0 | 0 | 0 |
| 75 | 0 | 0 | 0 | 0 | 0 |
| 85 | 0 | 0 | 0 | 0 | 0 |
| 90 | 0 | 0 | 0 | 0 | 0 |

Cone of Light*

| Ft. | FC | Dia. |
|-----|-------|------|
| 10 | 350.2 | 3.0 |
| 15 | 155.6 | 4.4 |
| 20 | 87.5 | 5.9 |
| 25 | 56.0 | 7.3 |
| 30 | 38.9 | 8.8 |
| 35 | 28.6 | 10.3 |

HRR-07036-15 (Clear Lamp)

--- 0° S/MH 0.6
 --- 45° S/MH 0.6
 --- 90° S/MH 0.5

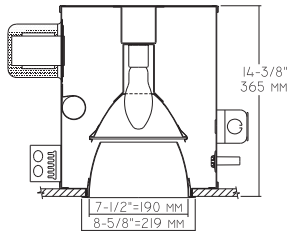
EFFIC: 29.3%
ITL TEST #51724
***LER = 23.2 *AEC = \$10.35**

| CANDLEPOWER DISTRIBUTION | | | | | |
|--------------------------|-------|-------|-------|-------|-------|
| | 0.0 | 22.5 | 45.0 | 67.5 | 90.0 |
| 0 | 13299 | 13299 | 13299 | 13299 | 13299 |
| 5 | 12480 | 12445 | 12343 | 12369 | 12168 |
| 15 | 7731 | 8137 | 7826 | 7019 | 6415 |
| 25 | 2842 | 2902 | 2947 | 2594 | 2321 |
| 35 | 890 | 839 | 801 | 814 | 808 |
| 45 | 203 | 168 | 146 | 149 | 153 |
| 55 | 19 | 16 | 13 | 13 | 13 |
| 65 | 7 | 3 | 0 | 0 | 0 |
| 75 | 0 | 0 | 0 | 0 | 0 |
| 85 | 0 | 0 | 0 | 0 | 0 |
| 90 | 0 | 0 | 0 | 0 | 0 |

Cone of Light*

| Ft. | FC | Dia. |
|-----|-------|------|
| 10 | 133.0 | 5.4 |
| 15 | 59.1 | 8.2 |
| 20 | 33.2 | 10.9 |
| 25 | 21.3 | 13.6 |
| 30 | 14.8 | 16.3 |
| 35 | 10.9 | 19.0 |

HRR-07037 200W



HRR-07037 (Clear Lamp)

--- 0° S/MH 0.3
 --- 45° S/MH 0.3
 --- 90° S/MH 0.3

EFFIC: 37.5%
ITL TEST #51658
***LER = 32.2 *AEC = \$7.44**

| CANDLEPOWER DISTRIBUTION | | | | | |
|--------------------------|-------|-------|-------|-------|-------|
| | 0.0 | 22.5 | 45.0 | 67.5 | 90.0 |
| 0 | 46968 | 46968 | 46968 | 46968 | 46968 |
| 5 | 35541 | 35541 | 35541 | 35541 | 35541 |
| 15 | 11649 | 11649 | 11649 | 11649 | 11649 |
| 25 | 2391 | 2391 | 2391 | 2391 | 2391 |
| 35 | 558 | 558 | 558 | 558 | 558 |
| 45 | 198 | 198 | 198 | 198 | 198 |
| 55 | 0 | 0 | 0 | 0 | 0 |
| 65 | 0 | 0 | 0 | 0 | 0 |
| 75 | 0 | 0 | 0 | 0 | 0 |
| 85 | 0 | 0 | 0 | 0 | 0 |
| 90 | 0 | 0 | 0 | 0 | 0 |

Cone of Light*

| Ft. | FC | Dia. |
|-----|-------|------|
| 10 | 469.7 | 3.1 |
| 15 | 208.8 | 4.7 |
| 20 | 117.4 | 6.3 |
| 25 | 75.2 | 7.9 |
| 30 | 52.2 | 9.4 |
| 35 | 38.3 | 10.9 |

HRR-07037-15 (Clear Lamp)

--- 0° S/MH 0.6
 --- 45° S/MH 0.6
 --- 90° S/MH 0.5

EFFIC: 36.2%
ITL TEST #51659
***LER = 31.1 *AEC = \$7.71**

| CANDLEPOWER DISTRIBUTION | | | | | |
|--------------------------|-------|-------|-------|-------|-------|
| | 0.0 | 22.5 | 45.0 | 67.5 | 90.0 |
| 0 | 15446 | 15446 | 15446 | 15446 | 15446 |
| 5 | 15099 | 15099 | 15099 | 15099 | 15099 |
| 15 | 11850 | 11850 | 11850 | 11850 | 11850 |
| 25 | 4121 | 4121 | 4121 | 4121 | 4121 |
| 35 | 1059 | 1059 | 1059 | 1059 | 1059 |
| 45 | 339 | 339 | 339 | 339 | 339 |
| 55 | 27 | 27 | 27 | 27 | 27 |
| 65 | 16 | 16 | 16 | 16 | 16 |
| 75 | 9 | 9 | 9 | 9 | 9 |
| 85 | 1 | 1 | 1 | 1 | 1 |
| 90 | 0 | 0 | 0 | 0 | 0 |

Cone of Light*

| Ft. | FC | Dia. |
|-----|-------|------|
| 10 | 154.5 | 6.8 |
| 15 | 68.7 | 10.2 |
| 20 | 38.6 | 13.6 |
| 25 | 24.7 | 17.0 |
| 30 | 17.2 | 20.4 |
| 35 | 12.6 | 23.8 |

HRR-07037-28 (Clear Lamp)

--- 0° S/MH 0.2
 --- 45° S/MH 0.2
 --- 90° S/MH 0.2

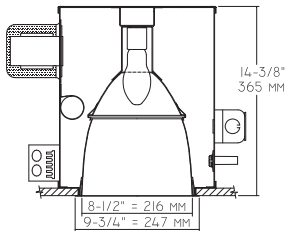
EFFIC: 39.0%
ITL TEST #51660
***LER = 33.5 *AEC = \$7.16**
MULTIPLY CANDELA BY 10.0

| CANDLEPOWER DISTRIBUTION | | | | | |
|--------------------------|-------|-------|-------|-------|-------|
| | 0.0 | 22.5 | 45.0 | 67.5 | 90.0 |
| 0 | 14270 | 14270 | 14270 | 14270 | 14270 |
| 5 | 6000 | 6000 | 6000 | 6000 | 6000 |
| 15 | 854 | 854 | 854 | 854 | 854 |
| 25 | 109 | 109 | 109 | 109 | 109 |
| 35 | 20 | 20 | 20 | 20 | 20 |
| 45 | 6 | 6 | 6 | 6 | 6 |
| 55 | 0 | 0 | 0 | 0 | 0 |
| 65 | 0 | 0 | 0 | 0 | 0 |
| 75 | 0 | 0 | 0 | 0 | 0 |
| 85 | 0 | 0 | 0 | 0 | 0 |
| 90 | 0 | 0 | 0 | 0 | 0 |

Cone of Light*

| Ft. | FC | Dia. |
|-----|--------|------|
| 10 | 1427.0 | 1.5 |
| 15 | 634.0 | 2.3 |
| 20 | 356.8 | 3.0 |
| 25 | 228.3 | 3.8 |
| 30 | 158.6 | 4.5 |
| 35 | 116.5 | 5.3 |

HRR-08038 200W



HRR-08038 (Clear Lamp)

--- 0° S/MH 0.4
 --- 45° S/MH 0.4
 --- 90° S/MH 0.4

EFFIC: 56.4%
ITL TEST #51671
***LER = 48.5 *AEC = \$4.95**

| CANDLEPOWER DISTRIBUTION | | | | | |
|--------------------------|-------|-------|-------|-------|-------|
| | 0.0 | 22.5 | 45.0 | 67.5 | 90.0 |
| 0 | 38541 | 38541 | 38541 | 38541 | 38541 |
| 5 | 33458 | 33458 | 33458 | 33458 | 33458 |
| 15 | 16241 | 16241 | 16241 | 16241 | 16241 |
| 25 | 6129 | 6129 | 6129 | 6129 | 6129 |
| 35 | 1721 | 1721 | 1721 | 1721 | 1721 |
| 45 | 413 | 413 | 413 | 413 | 413 |
| 55 | 77 | 77 | 77 | 77 | 77 |
| 65 | 0 | 0 | 0 | 0 | 0 |
| 75 | 0 | 0 | 0 | 0 | 0 |
| 85 | 0 | 0 | 0 | 0 | 0 |
| 90 | 0 | 0 | 0 | 0 | 0 |

Cone of Light*

| Ft. | FC | Dia. |
|-----|-------|------|
| 10 | 385.4 | 4.2 |
| 15 | 171.3 | 6.3 |
| 20 | 96.4 | 8.4 |
| 25 | 61.7 | 10.5 |
| 30 | 42.8 | 12.6 |
| 35 | 31.5 | 14.7 |

HRR-08038-15 (Clear Lamp)

--- 0° S/MH 0.7
 --- 45° S/MH 0.7
 --- 90° S/MH 0.7

EFFIC: 55.9%
ITL TEST #51669
***LER = 48.1 *AEC = \$4.99**

| CANDLEPOWER DISTRIBUTION | | | | | |
|--------------------------|-------|-------|-------|-------|-------|
| | 0.0 | 22.5 | 45.0 | 67.5 | 90.0 |
| 0 | 19004 | 19004 | 19004 | 19004 | 19004 |
| 5 | 18777 | 18777 | 18777 | 18777 | 18777 |
| 15 | 15711 | 15711 | 15711 | 15711 | 15711 |
| 25 | 7212 | 7212 | 7212 | 7212 | 7212 |
| 35 | 2523 | 2523 | 2523 | 2523 | 2523 |
| 45 | 693 | 693 | 693 | 693 | 693 |
| 55 | 105 | 105 | 105 | 105 | 105 |
| 65 | 3 | 3 | 3 | 3 | 3 |
| 75 | 0 | 0 | 0 | 0 | 0 |
| 85 | 0 | 0 | 0 | 0 | 0 |
| 90 | 0 | 0 | 0 | 0 | 0 |

Cone of Light*

| Ft. | FC | Dia. |
|-----|-------|------|
| 10 | 190.0 | 7.4 |
| 15 | 84.5 | 11.2 |
| 20 | 47.5 | 14.9 |
| 25 | 30.4 | 18.6 |
| 30 | 21.1 | 22.3 |
| 35 | 15.5 | 26.0 |

HRR-08038-28 (Clear Lamp)

--- 0° S/MH 0.1
 --- 45° S/MH 0.1
 --- 90° S/MH 0.1

EFFIC: 57.4%
ITL TEST #51670
***LER = 49.4 *AEC = \$4.86**
MULTIPLY CANDELA BY 10.0

| CANDLEPOWER DISTRIBUTION | | | | | |
|--------------------------|-------|-------|-------|-------|-------|
| | 0.0 | 22.5 | 45.0 | 67.5 | 90.0 |
| 0 | 17688 | 17688 | 17688 | 17688 | 17688 |
| 5 | 6956 | 6956 | 6956 | 6956 | 6956 |
| 15 | 1557 | 1557 | 1557 | 1557 | 1557 |
| 25 | 383 | 383 | 383 | 383 | 383 |
| 35 | 38 | 38 | 38 | 38 | 38 |
| 45 | 0 | 0 | 0 | 0 | 0 |
| 55 | 0 | 0 | 0 | 0 | 0 |
| 65 | 0 | 0 | 0 | 0 | 0 |
| 75 | 0 | 0 | 0 | 0 | 0 |
| 85 | 0 | 0 | 0 | 0 | 0 |
| 90 | 0 | 0 | 0 | 0 | 0 |

Cone of Light*

| Ft. | FC | Dia. |
|-----|--------|------|
| 10 | 1768.8 | 1.4 |
| 15 | 786.1 | 2.1 |
| 20 | 442.2 | 2.8 |
| 25 | 283.0 | 3.4 |
| 30 | 196.5 | 4.1 |
| 35 | 144.4 | 4.8 |

* LER (Luminaire Efficacy Rating) = Luminaire Effic. x Total Lamp Lumens x Ballast Factor
 Input Watts

* AEC = Annual Energy Cost per 1000 lumens
 (based on 3000 hours use @ \$0.08 KWH).

SUBMITTAL DATA

APPROVAL STAMP

JOB NAME

TYPE

WATTAGE

VOLTAGE

CATALOG NUMBER