

CATALOG #	TYPE	
JOB NAME	WATTAGE	VOLTAGE

11" x 11" 2 Triple 57 WATT MAXIMUM

FRS-11106

2 Lamp Square Regressed Lens Downlight

## Features

### Lamp

- Designed for two 4-pin triple/four tube amalgam compact fluorescent lamps: 57W triple/four tube.

### Ballast: Multi-Voltage

- Installed electronic high power factor, thermally protected. For lower wattages: Option -43.
- 120-277 multi-volt; 50/60 Hz. THD < 10%.
- ClickQuick connectors for easy service.
- Single circuit wiring or see Option -84.
- Cold weather -22°F (-30°C).
- End of lamp life protection circuit. For details see Option -84.
- Internally fused. Also see Options -S, -LD.

### Reflector

- Specular Alzak® aluminum.

### Trim Assembly

- Tapered aluminum black OptiGroove® with white flange or all white smooth self-flanged trim (Option -40) as shown in section view.
- Regressed temperature sensitive ballast.

### Aluminum Housing

- Acrylic enameled. Rustproof: Exceeds 1000 hours ASTM 59 salt water test.
- Light weight: Minimizes ceiling load.
- Optimizes operating life of ballast.
- ETL listed for use in wet, damp or dry locations.
- Built-in plaster frame.

### Outlet Box

- Prewired 14 GA (NEC) galvanized steel, UL listed. 1/2" and 3/4" knockouts.

### Installation

- Mounting brackets (2) supplied.
- Wet, damp or dry locations, covered ceilings.
- Through-branch conductors (6 #12).

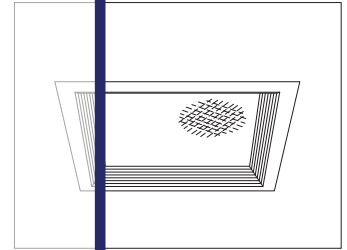
### Three Year Limited Warranty

- Composite standard ballast.

# THIS PRODUCT IS NO LONGER AVAILABLE

# Please consult QUOTATIONS

## for the best alternative.



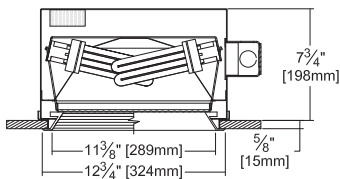
Recessed Square Regressed Lens

### Selected Optional Trims:

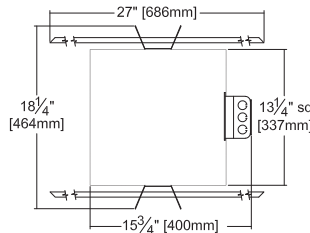
- White Grooveless Flare Option -40

## Performance at a Glance

FRS-11106



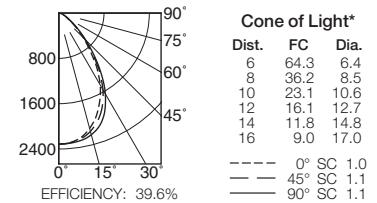
Option -40 Also Shown



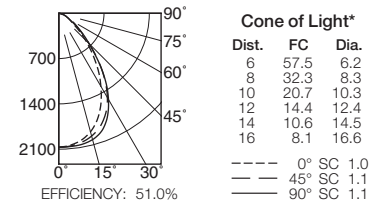
Ceiling Cut-out 12 1/4" Sq.

- Cone of Light Key**
- Ft.** Distance from fixture
  - FC** Footcandles (average)
  - Dia.** Circle of light at 50% of FC
  - Dia. (in ft.) shown is where FC value is half the FC at nadir.

FRS-11106 (2 Triple 57W)



FRS-11106-43 (2 Triple 42W)



# THE KIRLIN COMPANY

3401 EAST JEFFERSON AVENUE • DETROIT, MICHIGAN 48207-4232  
(313) 259-6400 • Fax: (313) 259-9409 OR (313) 259-3121 • www.kirlinlighting.com

RENAISSANCE SERIES  
COMPACT FLUORESCENT LIGHTING

MAXIMUM WATTAGE

2 Triple 57

CATALOG NUMBER

FRS-11106

DUE TO OUR CONTINUING EFFORT TO IMPROVE PRODUCTS, TECHNICAL INFORMATION IS SUBJECT TO CHANGE WITHOUT NOTICE.

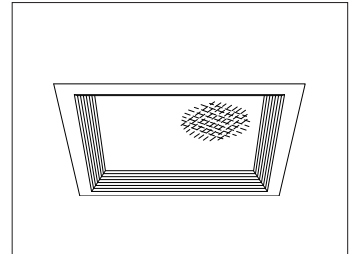
Alzak® is a registered trademark of ALCOA.

CATALOG #	TYPE	
JOB NAME	WATTAGE	VOLTAGE

11" x 11" 2 Triple 57 WATT MAXIMUM

FRS-11106

## 2 Lamp Square Regressed Lens Downlight



### Features

#### Lamp

- Designed for two 4-pin triple/four tube amalgam compact fluorescent lamps:
- 57W triple/four tube.

#### Ballast: Multi-Voltage

- Installed electronic high power factor, thermally protected. For lower wattages: Option -43.
- 120-277 multi-volt; 50/60 Hz. THD < 10%.
- ClickQuick connectors for easy service.
- Single circuit wiring or see Option -84.
- Cold weather -22°F (-30°C).
- End of lamp life protection circuit. RFI filter.
- Internally fused. Also see Options -FS, -FD.

#### Reflector

- Specular Alzak® aluminum.

#### Trim Assembly

- Tapered aluminum black OptiGroove with white flange or all white smooth self-flanged trim (Option -40) as shown in section view.
- Regressed tempered prismatic C#73 lens.

#### Aluminum Housing

- Acrylic enameled. Rustproof: Exceeds 1000 hour ASTM 5% salt spray test.
- Lightweight: Minimizes ceiling load.
- Cool operation: Extends component life.
- Entire luminaire serviced through aperture.
- Built-in plaster frame.

#### Outlet Box

- Prewired 14 GA (NEC) galvanized steel, UL listed. 1/2" and 3/4" knockouts.

#### Installation

- 27" galvanized hanger bars with adjustable mounting brackets (2) supplied.
- Recesses indoor or outdoor in covered locations.

#### UL, C-UL (Canada) Listings

- Wet, damp or dry locations, covered ceilings.
- Through-branch conductors (6 #12).

#### Three Year Limited Warranty

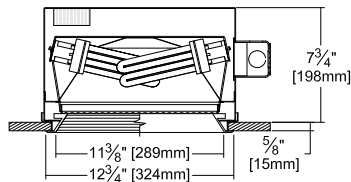
- Complete standard fixture and ballast.

#### Selected Optional Trims:

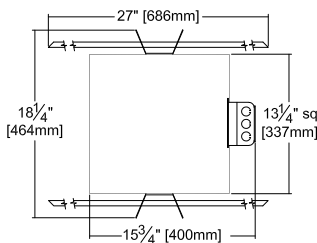
- White Grooveless Flare Option -40

### Performance at a Glance

FRS-11106



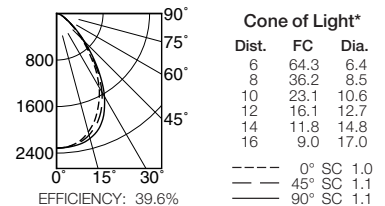
Option -40 Also Shown



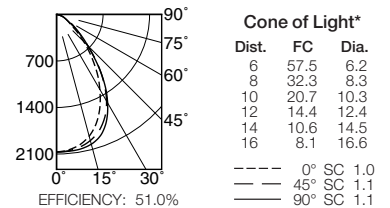
Ceiling Cut-out  
12 1/4" Sq.

- Cone of Light Key**
- Ft. Distance from fixture
  - FC Footcandles (average)
  - Dia. Circle of light at 50% of FC
  - \* Dia. (in ft.) shown is where FC value is half the FC at nadir.

FRS-11106 (2 Triple 57W)



FRS-11106-43 (2 Triple 42W)



## THE KIRLIN COMPANY

3401 EAST JEFFERSON AVENUE • DETROIT, MICHIGAN 48207-4232  
(313) 259-6400 • Fax: (313) 259-9409 OR (313) 259-3121 • www.kirlinlighting.com

RENAISSANCE SERIES  
COMPACT FLUORESCENT LIGHTING

MAXIMUM WATTAGE  
2 Triple 57

CATALOG NUMBER  
FRS-11106

DUE TO OUR CONTINUING EFFORT TO IMPROVE PRODUCTS, TECHNICAL INFORMATION IS SUBJECT TO CHANGE WITHOUT NOTICE.

Alzak® is a registered trademark of ALCOA.