

CATALOG #	TYPE	
JOB NAME	WATTAGE	VOLTAGE

10" x 10" 2 Triple 42 WATT MAXIMUM

FRS-10108

Versatile 2-Trip "K" Lens Downlight

# THIS PRODUCT IS NO LONGER AVAILABLE

## Features

### Lamp

- Designed for two 4-pin triple tube amalgam or quad compact fluorescent lamps: 42/32/26W triple or 26W quad.

### Ballast: Multi Wattage/Voltage

- Installed electronic high power factor ballast for lower wattages: Option -43.
- 120-277 multi-volt; 50/60 Hz. THD < 10%.
- ClickQuick connectors for easy service.
- Single circuit wiring or see Option -84.
- Cold weather -22°F (-30°C).
- End of lamp life protection circuit. Field Programmable Logic Controller (FPLC).
- Internally fused. Also see Options -S, -F, -P.

### Reflector

- GlasSurface™ multi-faceted specular aluminum reflector.

### Trim Assembly

- Shock-resistant, UV absorbing and convex lens. See Options for others.
- Rustfree polished nickel stainless steel (304-L) and captive mounting screws for fast relamping.

Attractively beveled cast aluminum frame is anodized to ensure durability. Clear, white acrylic lens.

### Aluminum Housing

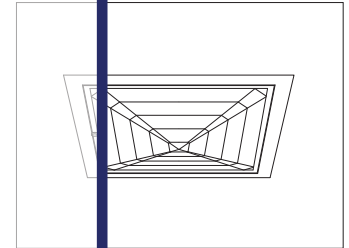
- Acrylic enameled. Rustproof. Exceeds 1000 hours ASTM 5 salt spray test.
- Lightweight; minimizes wiring load.
- Quick separation for easy lamp life.
- Entire luminaire serviced through aperture.
- Built-in plaster frame. (FRS-10109)

### Outlet Box

- Prewired 14 GA (NEC) galvanized steel, UL listed, 1/2" and 3/4" knockouts.

### Installation

- Use the following instructions for proper installation. Mounting brackets (2) supplied.
- Use the following instructions for proper installation. Mounting brackets (2) supplied.
- UL, CUL (See notes) listings.
- Wet, damp or dry locations, covered ceilings.
- Through-branch conductors (6 #12).



Recessed Square  
Kirlin Lens  
Shallow Plenum

### Selected Optional Lens:

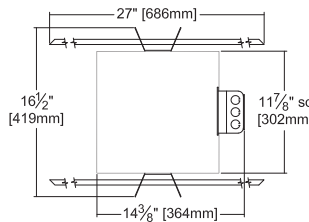
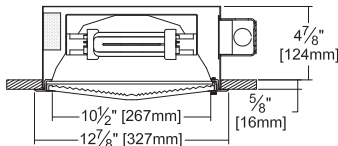
- Tempered Prismatic C#73 Option -15

Please consult **QUOTATIONS**

for the best alternative.

## Performance at a Glance

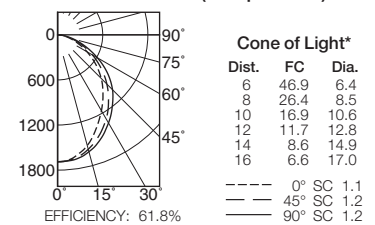
FRS-10108



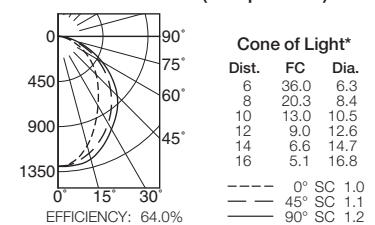
Ceiling Cut-out  
12 1/4" Sq.

- Cone of Light Key**
- Ft. Distance from fixture
  - FC Footcandles (average)
  - Dia. Circle of light at 50% of FC
  - Dia. (in ft.) shown is where FC value is half the FC at nadir.

FRS-10108 (2 Triple 42W)



FRS-10108 (2 Triple 32W)



## THE KIRLIN COMPANY

3401 EAST JEFFERSON AVENUE • DETROIT, MICHIGAN 48207-4232  
(313) 259-6400 • Fax: (313) 259-9409 OR (313) 259-3121 • www.kirlinlighting.com

RENAISSANCE SERIES  
COMPACT FLUORESCENT LIGHTING

MAXIMUM WATTAGE

2 Triple 42

CATALOG NUMBER

FRS-10108

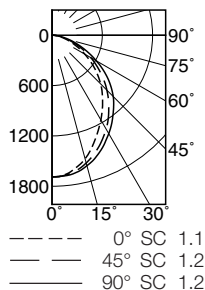
DUE TO OUR CONTINUING EFFORT TO IMPROVE PRODUCTS, TECHNICAL INFORMATION IS SUBJECT TO CHANGE WITHOUT NOTICE.

Alzak® is a registered trademark of ALCOA.

Detailed Photometry - Installed Fixture

Photometry from I.T.L., Boulder, CO

**FRS-10108 (2 Triple 42)**



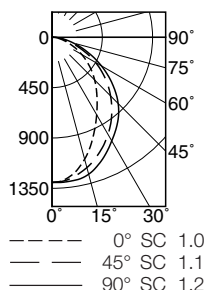
CANDLEPOWER DISTRIBUTION					
	0.0	22.5	45.0	67.5	90.0
0	1688	1688	1688	1688	1688
5	1671	1670	1677	1683	1683
15	1524	1542	1576	1602	1610
25	1284	1333	1397	1440	1454
35	1050	1113	1175	1223	1251
45	821	888	926	982	1033
55	574	639	663	717	763
65	340	388	409	435	466
75	158	181	191	202	224
85	44	48	49	56	63
90	10	12	10	15	18

COEFFICIENTS OF UTILIZATION						
RF	20					
RC	80		50		10	
RW	70	50	30	10	50	30
1	68	65	62	60	61	59
2	62	57	53	50	54	51
3	57	51	46	42	48	44
4	52	45	40	36	43	38
5	48	40	35	31	38	34
6	45	37	31	27	35	30
7	41	33	28	24	32	27
8	39	30	25	22	29	25
9	36	28	23	20	27	23
10	34	26	21	18	25	21

ITL TEST #45274 \*LER=37.2 •AEC=\$6.36

EFFICIENCY : 61.8%

**FRS-10108 (2 Triple 32)**



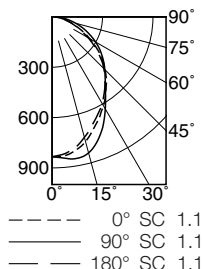
CANDLEPOWER DISTRIBUTION					
	0.0	22.5	45.0	67.5	90.0
0	1297	1297	1297	1297	1297
5	1278	1278	1287	1294	1299
15	1128	1150	1206	1252	1267
25	905	968	1078	1132	1144
35	704	803	921	967	999
45	539	654	741	786	837
55	382	484	549	567	624
65	235	304	345	351	398
75	109	140	161	168	198
85	31	39	44	51	63
90	10	14	14	18	24

COEFFICIENTS OF UTILIZATION						
RF	20					
RC	80		50		10	
RW	70	50	30	10	50	30
1	70	67	64	62	63	61
2	64	59	55	51	55	52
3	59	52	47	43	49	45
4	54	46	41	37	44	39
5	50	42	36	32	40	35
6	46	38	32	28	36	31
7	43	34	29	25	33	28
8	40	31	26	22	30	25
9	37	29	24	20	28	23
10	35	27	22	18	26	21

ITL TEST #42486 \*LER=37.1 •AEC=\$6.48

EFFICIENCY : 64.0%

**FRS-10108 (2 Quad 26)**



CANDLEPOWER DISTRIBUTION					
	0.0	45.0	90.0	135.0	180.0
0	833	833	833	833	833
5	831	839	845	829	820
15	769	825	839	786	743
25	664	712	717	662	642
35	556	537	554	508	543
45	446	285	443	378	435
55	323	280	350	281	310
65	198	198	246	197	189
75	97	112	146	109	99
85	33	38	57	37	37
90	13	13	23	12	15

COEFFICIENTS OF UTILIZATION						
RF	20					
RC	80		50		10	
RW	70	50	30	10	50	30
1	58	56	54	52	51	49
2	53	49	45	42	46	43
3	49	43	39	36	41	38
4	45	39	34	31	37	33
5	41	35	30	27	33	29
6	38	32	27	24	30	26
7	36	29	24	21	28	24
8	33	26	22	19	25	21
9	31	24	20	17	23	20
10	29	23	18	16	22	18

ITL TEST #41109 \*LER=30.9 •AEC=\$7.77

EFFICIENCY : 53.5%

\* LER = Luminaire Efficiency Rating

LER = Luminaire Effic. x Total Lamp Lumens x Ballast Factor / Input Watts

• AEC = Annual Energy Cost per 1000 lumens (based on 3000 hours use @ \$0.08 KWH).

**Options**

**Ballast, Wattage and Voltage**

- 39 Installed electronic dimming ballast. Indoor use. 10°C (50°F) minimum start. Specify wattage, voltage and brand.
- 43 Lower wattage: for either 4-pin electronic 2x18W triple/quad or 2x13W quad (only). Specify wattage.
- 84 Wired for two circuits. Also see -FD.
- 97 Specify other voltage. Consult factory.
- 98 347 volt, 50/60 Hz. input. Consult factory.

**Emergency Ballast - Specify Voltage<sup>1</sup>**

- Internal (factory installed) ballast, test switch and indicator light. Suitable for damp locations from 0° to 50°C (32° to 122°F) or with Cold Weather version (see -CE) -20° to 55°C (-4° to 131°F).
- 73 Internal 1-lamp EM ballast. Specify voltage.

- CE Internal cold weather (-20° to 55°C) 1-lamp EM ballast. Specify voltage.
- HE<sup>1</sup> Internal higher lumen (up to 1250) 1-lamp EM ballast. 13-42W only. Specify voltage.
- Lenses and Trims**
- 13 Vandal resistant tempered prismatic C#73 spread lens above 1/8" flat polycarbonate.
- 14 Drop opal glass diffuser.
- 15 Prismatic C#73 tempered glass lens.
- 17 .187" prismatic high strength acrylic lens.
- 18 Opal flat glass diffuser.
- 20 White aluminum 1/2" cube egg-crate louver.
- 21 White flat poly diffuser.
- 26 Tamper-resistant button head recessed hex screw with center pin and 1 key / 10 fixtures.
- 32 White oversize trim extender. Specify size.
- 45 Gasket between ceiling and trim flange.

- 46 Gasket between trim and lens.
- 94 Custom color/finish. Specify. Consult factory.
- CF High temperature color filter. Specify color. For use with Options -13, -15, -17, -18, -21.
- DG Drop Guard with C#73 tempered lens.
- DH Drop Holophane tempered lens.
- UV UV filter. For use with Options -13, -15, -17, -18, -21. Consult factory.

**Other**

- 99 Special modification. Consult factory.
- FD Two additional in-line fuses. One per ballast. Use with Option -84. Not available with Option -98 (347V).
- FS Additional in-line fuse. Not available with Option -98 (347V).
- LE With 4-pin electronic lamp. 3500°K standard. 82 CRI and 12,000 hour life. Specify wattage, style and color temperature.

<sup>1</sup> Visit [www.kirlinlighting.com](http://www.kirlinlighting.com) for most current performance / specifications.

SUBMITTAL DATA

APPROVAL STAMP

JOB NAME

TYPE

WATTAGE

VOLTAGE

CATALOG NUMBER

LIMITED WARRANTY: CATALOGUED KIRLIN FIXTURES ARE WARRANTED FREE OF DEFECTS IN WORKMANSHIP OR MATERIAL FOR THREE YEARS FROM DATE OF PURCHASE. INSTALLLED TO N.E.C. IN NORMAL USE. Manufacturer at his option will replace or repair, at no charge, any fixture found to be defective in workmanship or material. This warranty is limited to the original purchaser and is void if the fixture is not installed in accordance with the instructions. Liability of manufacturer is limited to the foregoing, and manufacturer shall not be liable for any other damages, direct or indirect, sustained or suffered by purchaser or any person. This warranty is supplied to the buyer in place of all other warranties, expressed or implied. Seller does not warrant as to merchantability or fitness for a particular use, nor will any oral statement constitute a warranty or amend this specific warranty. Abnormal use, abuse of the fixture, improper installation, or repair, or modification of the fixture without prior written authorization from the manufacturer will render the warranty void.