

CATALOG #	TYPE	
JOB NAME	WATTAGE	VOLTAGE

9" x 9" 2 Triple 42 WATT MAXIMUM

FRS-09091

Square X-CELL™ in Shallow Plenum

THIS PRODUCT IS NO LONGER AVAILABLE

Features

Lamp

- Designed for two 4-pin triple tube amalgam or quad compact fluorescent lamps: 42/32/26W triple or 26W quad.

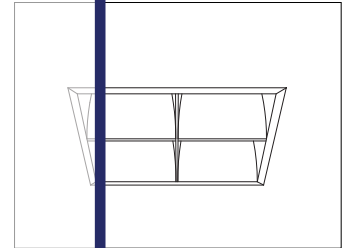
Ballast: Multi Wattage/Voltage

- Installed electronic high power factor, thermally protected. For lower wattages: Option -43.
- 120-277 multi-volt; 50/60 Hz. THD < 10%.
- ClickQuick connectors for easy service.
- Single circuit wiring or see Option -84.
- Cold weather -22°F (-30°C).
- End of lamp life protection circuit. For further information see Options -FS, -FD.

Reflectors

- Upper: Full size, highly reflective white finish.
- Lower: Low ridgescence (L.I.) self-flanged. Alzak® aluminum cone and 4-cell parabolic cross baffle self-flanged.
- See Options for other finishes.

Please consult QUOTATIONS for the best alternative.



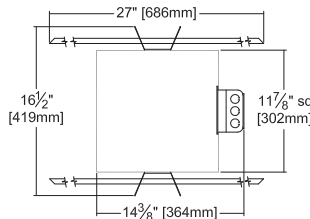
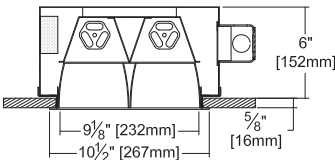
Recessed Square Open X-CELL™ Shallow Plenum

Selected Optional Trims:

- All White Option -30
- White Flange Option -31

Performance at a Glance

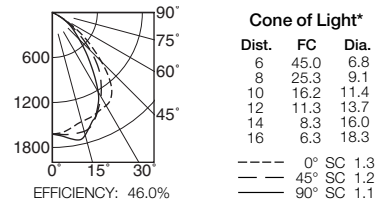
FRS-09091



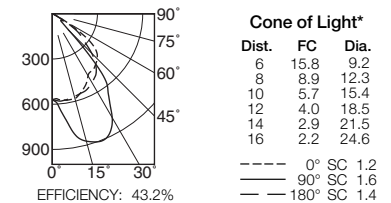
Ceiling Cut-out 9 3/4" Sq.

Cone of Light Key
Ft. Distance from fixture
FC Footcandles (average)
Dia. Circle of light at 50% of FC
 * Dia. (in ft.) shown is where FC value is half the FC at nadir.

FRS-09091 (2 Triple 42W)



FRS-09091 (2 Quad 26W)



THE KIRLIN COMPANY

3401 EAST JEFFERSON AVENUE • DETROIT, MICHIGAN 48207-4232
 (313) 259-6400 • Fax: (313) 259-9409 OR (313) 259-3121 • www.kirlinlighting.com

RENAISSANCE SERIES
 COMPACT FLUORESCENT LIGHTING

MAXIMUM WATTAGE

2 Triple 42

CATALOG NUMBER

FRS-09091

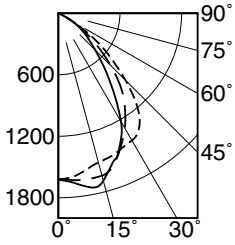
DUE TO OUR CONTINUING EFFORT TO IMPROVE PRODUCTS, TECHNICAL INFORMATION IS SUBJECT TO CHANGE WITHOUT NOTICE.

Alzak® is a registered trademark of ALCOA.

Detailed Photometry - Installed Fixture

Photometry from I.T.L., Boulder, CO

FRS-09091 (2 Triple 42)



----- 0° SC 1.3
 - - - - 45° SC 1.2
 _____ 90° SC 1.1

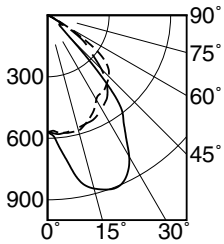
EFFICIENCY : 46.0%

CANDLEPOWER DISTRIBUTION					
	0.0	22.5	45.0	67.5	90.0
0	1621	1621	1621	1621	1621
5	1603	1614	1634	1651	1658
15	1508	1553	1641	1690	1692
25	1456	1520	1438	1409	1418
35	1369	1382	1130	955	938
45	923	1022	719	515	508
55	398	381	311	269	268
65	54	53	46	50	44
75	14	14	13	13	12
85	2	3	2	4	4
90	0	0	0	0	0

COEFFICIENTS OF UTILIZATION								
RF	20							
	RC	80			50			
		RW	70	50	30	10	50	30
1	52	50	49	47	47	46	45	
2	48	45	43	41	43	41	40	
3	45	41	38	36	39	37	35	
4	42	37	34	32	36	33	31	
5	39	34	31	28	33	30	28	
6	36	31	28	25	30	27	25	
7	34	29	25	23	28	25	23	
8	32	26	23	21	26	23	21	
9	30	24	21	19	24	21	19	
10	28	23	20	17	22	19	17	

ITL TEST #45272 *LER=28.4 •AEC=\$8.45

FRS-09091 (2 Quad 26)



----- 0° SC 1.2
 _____ 90° SC 1.6
 - - - - 180° SC 1.4

EFFICIENCY : 43.2%

CANDLEPOWER DISTRIBUTION					
	0.0	45.0	90.0	135.0	180.0
0	569	569	569	569	569
5	573	594	643	616	582
15	582	794	875	802	569
25	523	824	887	831	551
35	460	721	649	768	501
45	421	465	164	471	371
55	276	118	75	101	202
65	35	28	23	22	24
75	9	9	7	7	4
85	2	2	2	3	0
90	0	0	0	0	0

COEFFICIENTS OF UTILIZATION								
RF	20							
	RC	80			50			
		RW	70	50	30	10	50	30
1	48	47	46	44	44	43	42	
2	45	42	40	38	40	39	37	
3	42	38	36	34	37	34	33	
4	39	35	32	30	33	31	29	
5	36	32	29	26	30	28	26	
6	34	29	26	23	28	25	23	
7	32	27	23	21	26	23	21	
8	30	24	21	19	24	21	19	
9	28	23	19	17	22	19	17	
10	26	21	18	16	20	17	16	

ITL TEST #42080 *LER=23.2 •AEC=\$10.36

* LER = Luminaire Efficiency Rating
 LER = Luminaire Effic. x Total Lamp Lumens x Ballast Factor
 Input Watts

• AEC = Annual Energy Cost per
 1000 lumens (based on 3000
 hours use @ \$0.08 KWH).

LIMITED WARRANTY: CATALOGED KIRLIN FIXTURES ARE WARRANTED FREE OF DEFECTS IN WORKMANSHIP OR MATERIAL FOR THREE YEARS FROM DATE OF PURCHASE. INSTALLLED TO N.E.C. IN NORMAL USE. Manufacturer at his option will replace or repair such fixture or refund the purchase price on presentation of proof of purchase and defective fixture at the offices of manufacturer within three years of original shipment. Liability of manufacturer is limited to the foregoing, and manufacturer shall not be liable for any other damages, direct or indirect, sustained or suffered by purchaser or any person. This warranty is subject to the buyer in place of all other warranties expressed or implied. Seller does not warrant as to merchantability or fitness for a particular use, nor will any oral statement constitute a warranty or amend this specific warranty. Abnormal use, abuse of the fixture, improper installation, repair, or modification of the fixture without prior written authorization from the manufacturer will render the warranty void.

Options

Ballast, Wattage and Voltage

- 39 Installed electronic dimming ballast. Indoor use. 10°C (50°F) minimum start. Specify wattage, voltage and brand.
- 43 Lower wattage: for either 4-pin electronic 2x18W triple/quad or 2x13W quad (only). Specify wattage.
- 84 Wired for two circuits. Also see -FD.
- 97 Specify other voltage. Consult factory.
- 98 347 volt, 50/60 Hz. input. Consult factory.

Emergency Ballast - Specify Voltage¹

Internal (factory installed) ballast, test switch and indicator light. Suitable for damp locations from

- 0° to 50°C (32° to 122°F) or with Cold Weather version (see -CE) -20° to 55°C (-4° to 131°F).
- 73 Internal 1-lamp EM ballast. Specify voltage.
- CE Internal cold weather (-20° to 55°C) 1-lamp EM ballast. Specify voltage.
- HE¹ Internal higher lumen (up to 1250) 1-lamp EM ballast. 13-42W only. Specify voltage.

Lenses and Trims

- 15 Prismatic C#73 flat glass lens.
- 28 UV absorbing clear tempered glass lens.
- 30 All white cross baffle. (CP x .95)
- 31 White flange (only) on cross baffle.
- 32 White oversize trim extender. Specify size.
- 45 Gasket between ceiling and cross baffle flange.

- 79 Extension collar for ceilings up to 2" thick.
- 94 Custom color/finish. Specify. Consult factory.

Other

- 99 Special modification. Consult factory.
- FD Two additional in-line fuses. One per ballast. Use with Option -84. Not available with Option -98 (347V).
- FS Additional in-line fuse. Not available with Option -98 (347V).
- LE With 4-pin electronic lamp. 3500°K standard. 82 CRI and 12,000 hour life. Specify wattage, style and color temperature.

¹ Visit www.kirlinlighting.com for most current performance / specifications.

SUBMITTAL DATA

APPROVAL STAMP

JOB NAME

TYPE

WATTAGE

VOLTAGE

CATALOG NUMBER